

35 TRUCKS AND TRAILERS

7511 Allentown Blvd.
Harrisburg, PA 17112

AFFORDABLE CARS AND TRUCKS, INC.

717-652-1925
FAX 717-652-4888
www.autotrader.com/view/affordable car and truck

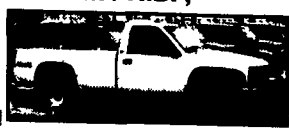
75 TRUCKS IN STOCK

"You Gotta Believe!!"

New Exit #72A, Rt. 81 N; Rt. 22 East of Harrisburg; 3 Miles North of Hershey Park

97 CHEV 2500 4x4 H.D.

8600 GVW, Cheyenne Pickup with Like New Quick Release Myers Power Angle Plow 350 V8, AT, AC, Cloth Seat, only 80K, Mint Condition!



\$9,995 Complete. Or \$9,500 w/out plow.

96 FORD F250 XLT 4x4



H D Ext Cab Longbed, 7.3 Powerstroke with 5-Speed, AC, PW, PDL, Cruise & Tilt Only 88K. Very Rare Truck in Prime Condition, Farmers & Pullers This is What You've Been Waiting For!

\$16,995



96 FORD F250 XLT 4X4 EXT. CAB

7.3 Powerstroke, DSL, Longbed, AT, AC, PW, PDL, Tilt, Cruise, Black/Silver. Only 60,000 Mi. New Condition.

\$16,995



99 FORD F250 LARIAT 4x4 SUPER DUTY QUAD CAB,

Longbed, 5.4 Triton V8, AT, AC, PW, PDL, Leather, & More. Mint condition, 1-owner, 100,000 Mi.

\$14,995



00 FORD EXCURSION LIMITED,

4x4, 7.3 Powerstroke dsl, 1-owner, 90,000 miles, 3rd seat, all highway, barn door, leather, dual Heat & air + every other option, Black, King of the SUV's + 24 MPG's

\$22,995



96 DODGE RAM 1500 LARAMIE SLT 4x4,

V8, Gas, Ext. Shortbox, AT, AC, PW, PDL, Tilt, Cruise, Real Sharp Truck 100,000 Mi.

\$8,995



97 FORD F350 XLT 4x4 SUPER DUTY CREW CAB LONGBED

AT Powerstroke AC, PW, PDL, Cruise, Real Nice Truck, 114K Must See!

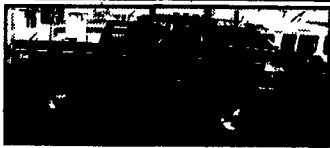
\$17,999



89 FORD F250 XLT 4x4 EXT.,

Longbed, 5-Speed, 7.3 International DSL, nice clean truck, 80,000 miles. You will really like this old trade in!

\$7,495



97 FORD F350 XLT 4x4 H.D.

1-Owner, 7.3 Powerstroke Dsl., 5-Speed, AC, PW, PDL, Tilt, Cruise, All Black & Like New. All Factory Paint. Extra Clean Truck, 100,000 Mi.

\$15,995



96 FORD F250 XLT 4x4 H.D.

8600 GVW, 460 V8, AT, AC, PW, Pdl, Cruise, Tilt, All Black & Sharp, Like New Cond! 100,000 mi

\$9,500



99 FORD F350 XLT 4x4 SUPER DUTY QUAD CAB

Longbed, 7.3 Powerstroke, AT, AC, PW, PDL, Cruise, TPS Power Pack, Red & Extra Clean. I'd Call it A 10.0, 101, 000 Mi

\$18,995



97 CHEV TAHOE LS 4x4,

Vortec 350, AT, AC, PW, Rear AC + heat, CD, Delco, combo stereo, 100,000 Miles, Mint condition

\$8,995



95 CHEV SUBURBAN 1500 LS

4x4 Barn doors, 3rd seat, Recon AC +heat, V8 350, + all options. Dk green, only 70K, Like new !!

\$10,500



97 DODGE RAM 4x4, 2500 LARAMIE SLT, Ext,

Cab, Longbed Cummins Turbo DSL, 5-Spd AC PW PDL Tilt, Cruise, Very clean and perfect running Truck, 100,000 mi Now Boys You have to pay more for 5-Speed!

\$16,995



95 FORD F250 XLT 4x4

Longbed, 5.8 V8 351, 5 Sp., 8800 GVW, Only 90K, AC, PW, PDL, Cruise + Tilt, Showroom Looking Condition.

\$10,995



96 FORD F250 XLT 4x4 EXT.

Longbed, 7.3 Powerstroke Dsl., AT, AC, PW, PDL, Tilt, Cruise & More, Black/Silver, Nice, Clean Well Kept Tk., 160K

\$11,995



95 FORD F250 XLT 4x4

8600 GVW, 5.8 V8, GAS 351, AT, AC, PW, PDL, Cruise & Tilt, Like New In Every Way! 98K

\$8,995



01 FORD F350 XLT, 4x4, Super Duty, Quad Cab,

Longbed, only 50,000 mi., All Black, 7.3 Powerstroke DSL, plus its 6-Speed. This like new beauty HAS IT ALL!! Original Cost \$38,000 My price on this Showpiece

\$25,995. A Steal!!



96 DODGE RAM 2500 4x4 ST,

Cummins Turbo DSL, AT, AC, Cloth Seats, plus rubber mat. Just a super clean and great running Basic Truck 100,000 miles. You won't be disappointed here!

\$10,995



99 DODGE RAM 3500 4x4 LARAMIE SLT QUAD CAB,

Longbed, Cummins Turbo Dsl 5-Spd, AC, PW, PDL, Cruise, Tilt, P Seat, Stereo and more 140k All black and showroom condition Well cared for PA 1-owner

\$20,495



01 FORD F-350 XLT 4X4 CREW CAB DUALY,

Super Duty LongBed, 7.3 Powerstroke, AT, AC, PW, PDL, Cruise, Tilt, Alloys, Black Truck, Like New! 120K All Highway, Fully Serviced

\$23,995



99 DODGE RAM 2500 4x4 LARAMIE SLT QUAD CAB

Longbed, Cummins Turbo Dsl, 5-Sp, AC, PW, PDL, Tilt, Cruise, Real Clean, 1-Owner Truck, 81,000

\$19,995



98 FORD F350 SUPREME

18' Box Truck, 11,500 GVW's, Rollup Door, Plank, New Tires, Brakes, & Insp, AT, AC, Stereo, 5.4-Triton, 100,000 Mi., Superb, Sharp. We used truck all year!

\$8,999

Disclaimer Mileage listed for your convenience only it is approximate, not to be relied on as exact Sorry for any inconvenience

35 TRUCKS AND TRAILERS



1980 White fertilizer tender truck, 6-71 engine, s/a, s/s, 10 ton Body, two compartment, long auger, hydraulic drive.

Adams 717-677-4477

'92 F450 Ford dsl, w/John Blue sprayer, \$13,500 ex cond. 717-362-3333

Truck & trailer combo, 2000 F-350, 4x4, 156wb, crew cab XLT dsl, 90K mi, cap, G-neck hitch, 2000 Moritz 30' triaxle, 20K GVS vac/hyd brks, both ex cond. Truck \$22,800, trl \$6,200, combo \$27,000. 814-349-5849.

'83 F350 dump, 98K mi, \$4,000 obo. 267-446-2993.

'94 GMC ext a cab, 4x4, SLE, PW, cruise, keyless, bed liner, 74K mi, \$8,800 obo. 276-446-2993.

Dump truck, 91 Chevy dually 4x4 stake body, 6-ton hoist, gooseneck & bumper hitch, 454 automatic, \$12,500; Equipment trailer, 97 International 12,000 20' pop-up beaver tail, new lights, good condition, \$3100 firm. 717/432-1485

1999 Ford F450, 4wd, 8ft stake body dump, power stroke dsl, 75k on truck, 15k on new motor, \$22,000. 570-745-7725

1989 Peterbilt, 378 day cab, w/350 Cummins, wet line, good running solid truck. 717-872-9152.

SAVE. STORAGE OR ROAD TRAILERS, 20' or 40' GROUND LEVEL CONTAINERS. PROMPT & COURTEOUS SERVICE. REASONABLE RATES. YOUR STORAGE SOLUTION, INC. 610/921-1955, 1/800-220-6082

Storage Trailers. Sale, rent. 40' - \$950, 28' - \$750. Germak 717/944-2487

'94 Wilson hopper bottom trailer, good tires/brakes, 42'L, 96" h, 96" w, \$13,000. '78 city dump trailer, 32'Lx72" sides, roll tarp, \$10,000. '79 Great Dane flat trailer, 40'L \$1,200. 717-729-5180.

Engines for sale: Cat 3406B, 425hp, 3208 Cat v.g. Ford 370V4. Chevy 292, 350, 305, Mack 300, 350 2-valve. All good runners. 1985 Mack tri-axle dump, runs good, needs work. Many other truck parts. Haps Auto 610-944-9871 after 6pm. (cell) 610-858-4092

Owner operators wanted-walking floor or dump trailers, for hauling mulch within NJ & PA. You or I will supply trailer. Paid weekly. Ask for Mike 215-603-0500

Custom 1 ton GMC pickup w/Dei 453 dsl, 5 spd, flatbed, great tow or work truck, \$12,500 obo. Large flatbed gooseneck trailer w/dovetail and ramps, \$5,000 obo. 540-293-3200.

'97 GMC truck, 4x4, ext cab, 6.5 diesel, AC, AM/FM cassette, 8/03 inspection, cruise, 174k miles, \$6500. 610-942-3809

WANT: 40 yard roll off containers, any condition. 717-464-4461.

1986 Cabover Peterbilt tractor, 350 Cummins 9-spd w/wet line, \$2750. 717-867-2574

92 Dodge Ram 250, Cummins 5 spd, 4wd, reg cab, exhaust brake 65 hp chip, gsneck & revr hfchs. 106,000 mi NICE! \$10,800. 443-465-1061

1981 Ford F700, new Det dsl eng, new Reading utility body, new paint, A/C, exc cond, \$7,000 obo. 610-775-7706.

45' 102 van trailer. '94 45'x96" flat bed, spread axle air ride combo. '78 Transcraft 43' drop deck, 36" h, 3 axle air ride. '78 Chevy 427, 5 + 2 19' grain body, excellent condition. 610-779-328..

89 IH 9300 tractor, day cab, 350 Cat, 716k mi, \$11,000. 78 IH 2500 S Series tractor, day cab, 290 Cummins, 480k mi, \$6000. 85 Fruehauf flatbed 42' trlr, \$2500; 77 Fruehauf flatbed 40' trlr, \$1500; 61 Lacrosse lowboy trlr, \$3500; container trlr, no title, \$600. 301/842-2932

"WET LINE"

77 R Model Mack, Tandem Axle Tractor, 350 Cummins Rebuilt, 10 Speed Trans., 10R20 Tires - Good, Air Seat, New 5th Wheel, Rebuilt Camelback Suspension, Wet Line, Good Work Truck... **\$7,500 Make Offer!**

Call Ray 856-424-6300
www.domsint.com

PRICES REDUCED

1997 Ford E350, Powerstroke Diesel, AT, 90K Miles . . . ~~\$9,200~~ **\$7,400**

1990 Dodge 3500, Diesel, 5-Spd. ~~\$4,600~~ **\$4,400**

1997 Ford F150 Ext. Cab, 55K Miles ~~\$9,200~~ **\$7,900**

1998 Ford Ranger Ext. Cab, 16K Miles ~~\$9,700~~ **\$9,200**

1991 Ply. Voyager, 150K Miles ~~\$1,200~~ **\$1,000**

1996 GMC Safari Van, 58K Miles ~~\$9,200~~ **\$7,800**

Call 717-933-4114

2000 Isuzu NPR
3.9 Turbo Diesel, AT O, 12000 GVW, 41,000 Mi., w/Tymco Street Sweeper, Model 210
New Holland **717-354-3199**

Precision Engine Machining Rebuilding

- Engine Removal/Installation Availability
- Engine Disassembly/Assembly Availability
- Quick Service on Flywheel Resurfacing
- Complete Block Reconditioning - up to 98"x15" bore
- Complete Head Reconditioning
- Complete Rod Reconditioning
- Complete Crank Reconditioning
- Balancing (Crank, Rods, Flywheel, Etc)
- Straightening & Welding of All Types of Steel Shafts and Cranks (to 90")
- Cast Iron Crack repair
- Large Mill - Large Lathe - 60 Ton Press
- Rollback PU/Delivery Service Availability

Case - Farmall - JD - Ford - Perkins - Kubota - Deutz - Isuzu - International - Kohler - Caterpillar - Detroit - Komatsu - Mack - Cummins - Iveco - Agco - Oliver - Ag - Industrial

FEDERAL MEGUIE

Rutt's Machine Shop, Inc.
300 Jonlyn Drive, Elizabethtown, PA 17022
Call (717) 367-3011
www.ruttsmachine.com