

**BUY,  
SELL,  
TRADE  
OR  
RENT  
THROUGH  
THE  
CLASSIFIED  
ADS  
IN**

**Lancaster  
Farming**

**PHONE:  
717-626-1164  
OR  
717-394-3047**

**FAX:  
717-733-6058**

**Mon., Tues.,  
Wed., Fri.  
8 AM to 5 PM  
Thurs.  
7 AM to 5 PM**



**Lancaster  
Farming**

**Check  
out  
our  
Website**

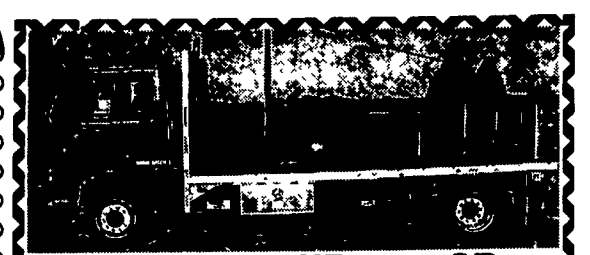
[www.lancasterfarming.com](http://www.lancasterfarming.com)



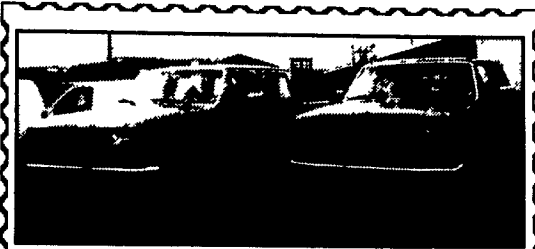
'86 GMC grain & silage truck, 5+2 A.B. 366 engine, 12,000 orig. miles, like new \$10,750. 301-293-2577



**1995 FL70**, non CDL, 8.3 Cummins, new 10' bed, hoist-PTO, HD hitch and toolbox, cab and tires excellent condition  
**814-696-6008**



**2000 Model UD 2300 LP**  
225hp Turbo/Inter Cooled Diesel, 23000 GVW, 6 speed Transmission, 165.6" Wheelbase w/19.5 tires, A/C, Pioneer Stereo, 15' Eby Aluminum bed w/bulkhead & Gooseneck ball. Excellent condition ~~\$24,900~~.  
**Reduced \$22,000 OBO. Must Sell.**  
Mid-Atlantic AgriSystems 717-529-2782



F-350 4 doors single wheel no air  
1996 125891 miles  
1997 127403 miles  
**\$9000 each**  
**570-683-5411**

**Truck & Trailers for Sale:**  
(1) 88 Volvo Day Cab 300 Cummins  
(2) Fruehauf 48' Dry Boxes  
(1) Trail Mobile 48' Dry Box  
(1) Nu-Van 40' Side Load Curtain

**Truck Repair Equipment:**  
(1) Blackhawk Frame Machinery Truck, Bus & Heavy Equipment. 275 tons of power. All related equipment & tools included. Excellent cond.

**Call (443) 506-7586 or  
(410) 803-0927**



**85 Mack RD 686**  
300, Lo hole, 6-speed, Double Frame, 245" Wheel Base, 20' Flatbed Dump w/4' Side Kit, Heavy Spec'd, a Good Solid Truck  
**\$15,500 OBO**  
**717/786-0934**

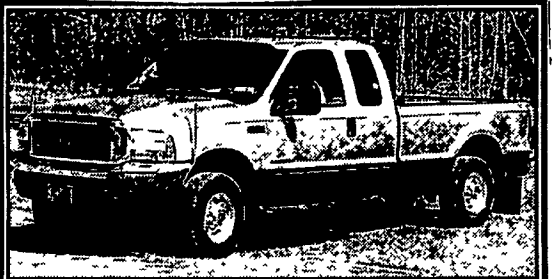
• 1991 Int 4900 dump truck, DT466, 210 hp, 5+2, 23K rear, 10' perfection body, air brakes, tool box, new Yokoma radials, air & electric trailer brakes, 109K, immaculate, \$21,500

• 1994 Int 4900 16' HD contractors dump truck, DT466, 210 hp, 7 spd, hyd disc brakes, 29K GVW, twin tanks, tool box, new Goodyear radials, A/C, immaculate, \$25,500.

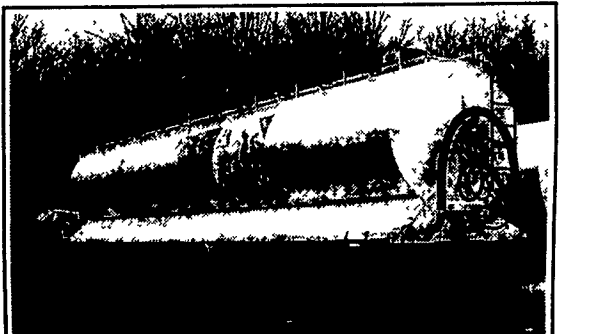
• 2002 Chevy S10 pickup, 4 cyl, 5 spd, A/C, bedliner, tool box, 2,000 mi, immaculate, \$11,000

• Dresser 1989 TD 7G bull dozer, 6 way blade, just serviced, low hrs, immaculate cond, \$18,500

Days 631-261-0011  
Eves 631-261-4345



**2000 Ford F250 S.C. Lariat,**  
4x4, 7.3, 6 speed, 60,000 miles,  
like new ..... **\$23,500**  
**845-895-2563**



**1993 Walinga Ultralite 10 pocket trailer**, air only, very good condition - must sell - lost contract - Ready to work!  
**Call Jeff 570-689-2488**



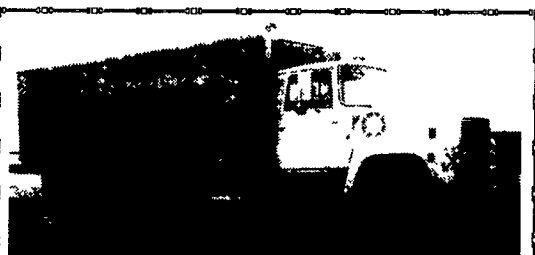
**75 RD Mack - 18 - 44 - 6 Spd., 14' Body,**  
Pintle Hook & Air, Runs Good. \$9,750  
**(215) 343-0156**



**1987 Chevy C-20 4x4, 3/4-Ton, Meyers**  
Snow Plow, 350-V8, Auto, Rusty Cab,  
Runs and Works Great! \$2400 Complete.  
Double-D-Auto Sales, Harrisburg, PA  
**717-774-5590**



**For Sale:**  
**1995 Kenworth T-600, 455 H.P. Cat, 60" flat top**  
bunk 3:70 RR, Jake, PS, AC, Heated & Power  
Mirrors, Teal Green, 230" WB, 650,000 mi., some  
recent work done, \$19,500  
**(717) 733-4491**



**1980 Ford 8000, 3208 Cat, 13**  
speed, 250,000 miles, 20 ft.  
silage bed, hydraulic tailgate,  
26 ton hoist. **Make Offer**  
**301-797-1926**



**FOR SALE**  
**1987 Autocar 350 Cummins, 13 Speed,**  
Heavy Specs, Triaxle, 50000 Lb. Rear,  
could be used as a manure tanker.  
**Call 717-272-3225**  
Ask for Glenn



**1997 INT'L DUMP**  
Cummins 300 10 Sp. 198,000 Mi.  
Pintle Hook, A/C, Ex. Cond.  
**\$39,500**  
**717-436-6137**



**1996 C-3500 Chevy dually, 5 spd.**  
trans., innercooled eng., 265 hp,  
585 ft. lb torque, air ride suspen-  
sion, towing package, exhaust  
brake & auxiliary fuel tank.  
**Clair Martin 717-626-4023**



**1993 Peterbilt**  
425 Cat. Mech. 9-spd 379 owner op. package Train  
whistle, wet line, 5th wheel for frameless trailer,  
"Black Beauty" looks great, runs great.  
**Phone 717-367-5081**  
**717-361-8298 eve.**



**1988 Auto Car Rolloff,**  
300 Cummins, Nice Older Truck  
**\$19,500**  
**301/829-0271**