

Farmlund Inc. 500 round bale wrapper
Hesston 545 round silage baler
 w/control console, bought new 1998,
 made about 600 bales
NH 565 square baler w/thrower, new
 1997, baled about 2000 bales, ex. shape
 Selling farm due to ill health
814-486-8855

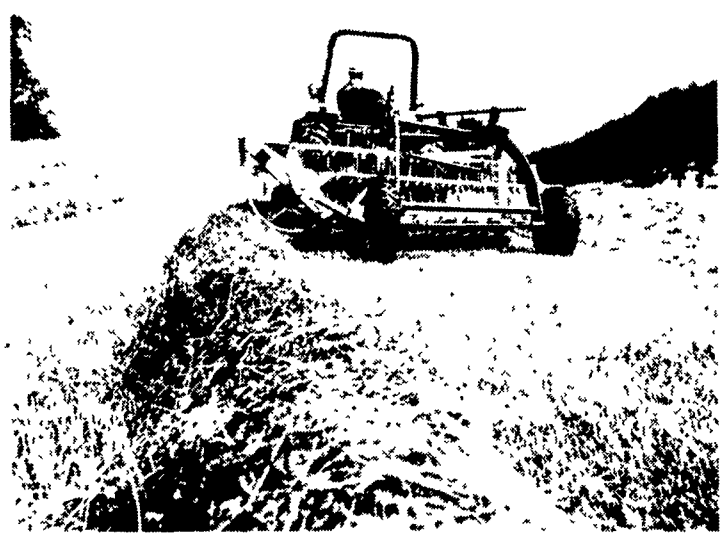


2000 CIH MX110
 power shift
 • CIH MX110
 ROPS, 2wd, PS
 • CIH 4230,
 ROPS, 2wd
 • CIH 7140,
 4wd
 • CIH 7110,
 4wd

717-445-6720

JD 7000 6R 30"
 planter, frame
 mounted no-til
 coulters, exc. cond
\$4,000
 JD 7340 11R 20"
 3pt w/no-til coulters,
\$6,000
(410)239-7252

STOLTZFUS TRACTOR SERVICE
 Rebuilding engines, transmissions,
 PTO's, Tune-ups.
 Fuel Injection System Repair
1715 Beaver Valley Pike,
Strasburg, PA 17579
717-786-0256



Rolabar® rakes better by far -

Don't settle for second best when it comes to rakes. Choose the original - a dependable New Holland Rolabar® rake. The rake more farmers buy over all other brands combined. Why? Because its rugged construction makes it one hard-working, hay-grabbing machine.

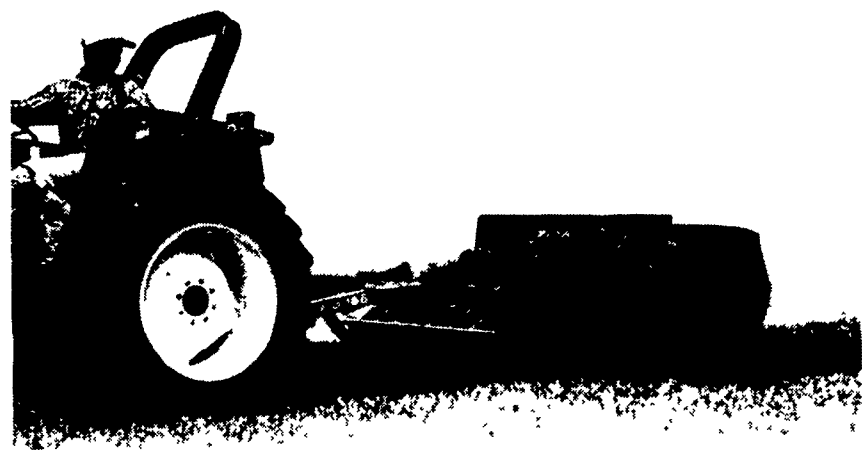
See the original Rolabar rake today.



Fluffed up... never roughed up

If a storm hits while you're making hay, you'll need the New Holland Model 166 windrow inverter. It helps to dry hay fast, so you can bale or chop sooner. The 166 gently lifts, fluffs and turns windrows without roughing up the hay. So, you move your windrows onto dry ground for faster drying and retain valuable leaves.

For hay that's fluffed up not roughed up, check out the 166 today.



Why wait for the sun

Speed up drying time with a New Holland tedder. It lifts downed crop up so air flows through it. Choose from three tedders - 8'6" Model 157, 16'5" Model 163, or 22'8" Model 169.

Stop in. We'd like to show you how our tedders can help you put up quality hay.



SEE YOUR NEAREST NEWHOLLAND DEALER FOR DEPENDABLE EQUIPMENT & SERVICE

PENNSYLVANIA

Abbottstown, PA
 Messick Equipment
 RD 1, Box 255A
717-259-6617

Elizabethtown, PA
 Messick
 Equipment
 Rt. 283 - Rheems Exit
717-367-1319

Pitman, PA
 SchrefflervEquipment
 Pitman, PA
570-648-1120

Annyville, PA
 BHM Farm
 Equipment, Inc.
 RD 1, Rte. 934
717-867-2211

New Holland, PA
 A.B.C. Groff, Inc.
 110 South Railroad
717-354-4191

Tamaqua, PA
 Charles S.
 Snyder, Inc.
 R.D. 3
570-386-5945

Carlisle, PA
 R&W
 Equipment Co.
 35 East Willow Street
717-243-2686



MARYLAND

Frederick, MD
 Ceresville New Holland, Inc.
 Rt. 26 East
301-662-4197
 Outside MD, 800-331-9122

Hagerstown, MD
 Antietam Tractor &
 Equipment, Inc.
 20927 Leitersburg Pike
800-553-6731
301-791-1200

Rising Sun, MD
 Ag Industrial Equipment
 Route 1,
 50 N. Greenmont Rd.
1-800-442-5043

NEW JERSEY

Washington, NJ
 Smith Tractor &
 Equip., Inc.
 15 Hillcrest Ave.
908-689-7900

Bridgeton, NJ
 Leslie G. Fogg, Inc.
 Canton & Stow Creek
 Landing Rd.
609-451-2727
609-935-5145

Woodstown, NJ
 Owen Supply Co.
 Broad Street & East Avenue
609-769-0308