

Siblings Remain

(Continued from Page B6)

would have survived until now," Melanie said.

Ian would like to expand the pig and veal operation and grow organic food. He said the barn is a bit antiquated but it works be-

cause they use pasturing.

He devised a portable pig pen attached to a fence. "It works like a plow," he said. The pigs eat at an area of pasture and then go on the a new area. The concept saves him from building fences and moving them.

He's experimenting by putting nests for chickens in the upper part. Chickens, he said, work well

with pigs. They peck on the corn the pigs miss, and the pigs protect chickens from foxes and varmints.

Their parents continue the dairy end of the operation, but when they retire, Melanie plans to reduce the herd to 20 cows.

She said, "We are only using half to the milk for cheese now. The remainder is shipped to Dairy Farmers of America. Twen-

ty cows would be a better fit for us."

Although they have the market to expand, Melanie likes the current schedule of only making cheese three times a week. But she would like to add pasteurization to allow her to make fresh cheeses and yogurt.

Melanie said, "We are very diversified with dairy, cheese, and

meat. To be successful, it is necessary that each segment coexists and can't be separated from the other."

Contact Keswick Creamery, Melanie Dietrich Cochran, 114 Leshar Rd., Newburg, PA 17240 or phone (717) 423-6758.

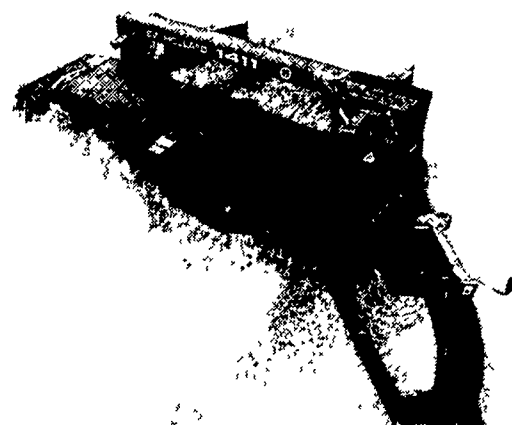
For more information about cheese or pastured pork and veal, call Ian at (717) 507-7668.

SAIL THROUGH TOUGH CROPS

3 Cutting Widths Match Your Needs.

Choose New Holland Discbine® disc mower-conditioners for clean, fast cutting in your heaviest, toughest, wettest crops.

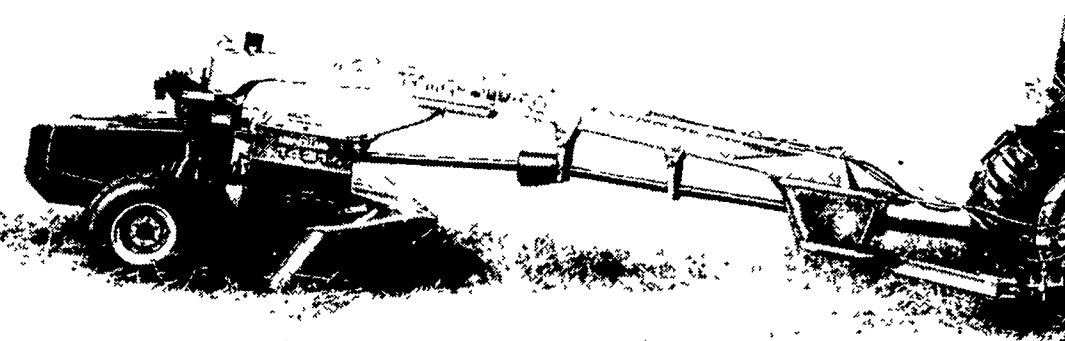
- **The most advanced independent modular design** for reliable performance, easy servicing and peace of mind.
- **102" chevron-design intermeshing rubber rolls** for thorough, gentle conditioning and fast drydown
- **Torsion-bar, roll-pressure system** that maintains constant pressure for consistent conditioning, yet allows slugs to pass through without plugging



New Holland 1411

- Eight discs make a 10'4" cut through thick, tangled, wet crops—fast

Discbine® disc mower-conditioners give you the perfect combination of mowing reliability, fast drydown and no-hassle servicing.

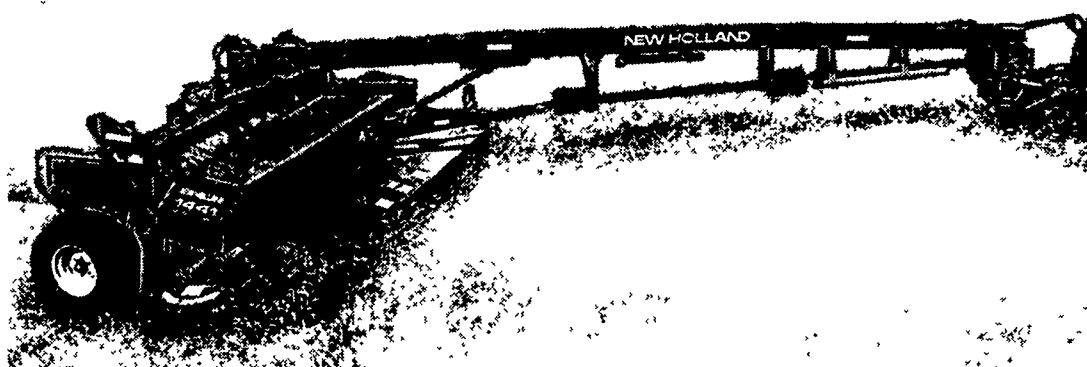


New Holland 1431

featuring a 13' cutting width, and operates at high ground speeds in wet, heavy grass without plugging.

- A center pivot-tongue design
- Independent modular cutterbar with ten small-diameter cutting discs
- A full range of vertical and lateral flotation.
- A cutterbar driven from both ends

Put A Discbine® To Work For You



New Holland 1441

12 discs to make a wide 15'7" cut through your heaviest, toughest crop conditions. You'll clear large fields fast and condition crops thoroughly for fast drydown.

- Standard swivel-hitch tongue gives you exceptional maneuverability to make tight headland turns and over-square corners.



SEE YOUR NEAREST NEWHOLLAND DEALER FOR DEPENDABLE EQUIPMENT & SERVICE

PENNSYLVANIA

Abbottstown, PA
Messick
Equipment
RD 1, Box 255A
717-259-6617

Annaville, PA
BHM Farm
Equipment, Inc.
RD 1, Rte. 934
717-867-2211

Carlisle, PA
R&W
Equipment Co.
35 East Willow Street
717-243-2686

Elizabethtown, PA
Messick
Equipment
Rt. 283 - Rheem's Exit
717-367-1319

New Holland, PA
A.B.C. Groff, Inc.
110 South Railroad
717-354-4191

Pitman, PA
Schreffler
Equipment
Pitman, PA
570-648-1120

Tamaqua, PA
Charles S.
Snyder, Inc.
R.D. 3
570-386-5945

MARYLAND

Frederick, MD
Ceresville New
Holland, Inc.
Rt. 26 East
301-662-4197
Outside MD, 800-331-9122
Hagerstown, MD
Antietam Tractor &
Equipment Inc.
Leitersburg Pike
800-553-6731
301-791-1200

Rising Sun, MD
Ag Industrial Equipment
Route 1,
50 N. Greenmont Rd.
1-800-442-5043

NEW JERSEY

Washington, NJ
Smith Tractor &
Equip., Inc.
15 Hillcrest Ave.
908-689-7900

Bridgeton, NJ
Leslie G. Fogg, Inc.
Canton & Stow Creek
Landing Rd.
856-451-2727
856-935-5145

Woodstown, NJ
Owen Supply Co.
Broad Street &
East Avenue
609-769-0308



**NEW HOLLAND
CREDIT**