

HARDI SPRAYERS HARDI

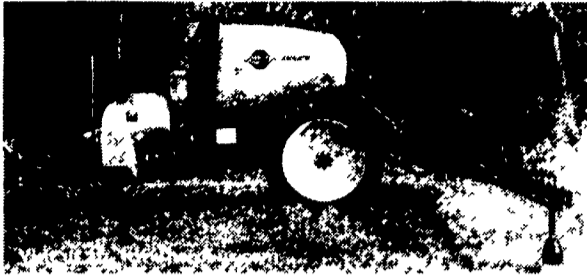
NEW!

NEW NAVIGATOR

- setting a new industry standard!

Performance Without Compromise - Economically Priced For Any Size Farming Operation

- 575 & 1100 gallon tanks
- 45'-100' Eagle™ (HY & HZ) hydraulic fold booms
- 42'-50' Falcon (HY) hydraulic fold booms
- HARDI® patented self-stabilizing coil spring & trapeze boom suspensions with shock absorber
- HARDI® Paralift™ (20"-70" boom height adjustment)
- HARDI® self-priming diaphragm pumps or centrifugal pumps
- HARDI® "Smart-Valve" fully integrated fluid control system (only 3 valves operate all possible fluid functions)



CANNON 3-PT. HITCH MISTBLOWER

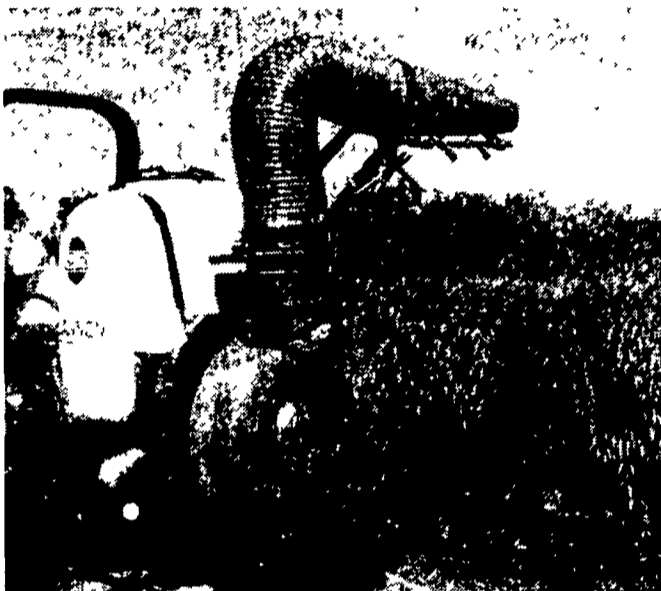
Model CA100 In Stock

The Hardi® Cannon mistblower is designed for single side spraying up to approximately 50 ft. horizontal and 40 ft. vertical. Tank size 100 gal.

The Hardi® Cannon is the perfect choice for spraying Christmas trees, vegetables, nurseries, and even cattle etc.

Features

The Cannon is equipped with a hydraulic motor that allows the spout to rotate 200° from left to right in a horizontal level. It also features a hydraulic tilt cylinder that can angle the spout between +80° and -10° in a vertical level.



Units In Stock:

- Navigator 575 - 45 Foot
- NL 155 3 Point - 33 Foot
- CA100 Cannon
- LB50 3 Point Estate Sprayers

Lebanon Valley Implement Co., Inc.

700 E. Linden Street, Richland, PA 17087 717-866-7518

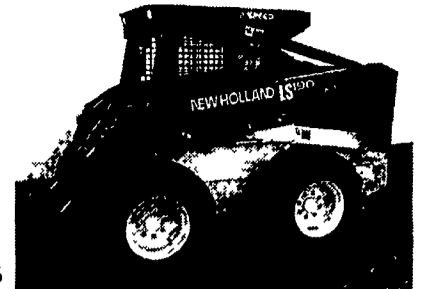
DEAL OF THE WEEK

Used NH LS190 SKID LOADER

83 HP, No Bucket, 2000, 1600 Hours, 2-Speed, Excellent Condition

~~\$24,700~~
\$23,900

#05176



Used Equipment in Stock

TRACTORS

White 6125 4 WD 125 HP, 18x6 PowerShift, 1997, 1629 Hrs, Ex Cond	\$39,900
MF 3140 2 WD 115 HP, 4 Speed Trans, 1993, 4694 Hours	\$25,900
MF 1105 2 WD 110 HP, MultiPower Trans, 1977, 1478 Hours	\$12,500
MF 6180 4 WD 110 HP, With Loader	\$39,900
MF 285 2 WD 82 HP Diesel, 8x2 MultiPower Trans, Cab, 2748 Hours	\$14,800
MF 1085 2 WD 81 HP Diesel, 8x2 MultiPower Trans, 3960 Hours, 1977	\$8,900
MF 4243 2 WD 75 HP Diesel, Cab	\$22,900
MF 4243 2 WD 75 HP Diesel, 12x4 Trans, Platform, 1998, 230 Hours	\$18,900
MF 255 2 WD 51 HP Dsl, 8 Spd Trans, Live PTO, Single Remote, 1975	\$7,450
Used MF 255 2 WD 51 HP Diesel, 8 Spd Trans, Dual Clutch, W/Loader	\$8,750
AGCO Allis 5650 4 WD 55 HP Dsl, 12x12 Trans, 980 Hrs, w/680 Loader	\$16,900
Case 1690 2 WD 90 HP Diesel, 12x4 Trans, 2770 Hours	\$8,200
Ford 2000 2 WD 36 HP Gas, 8x2 Trans, 650 Hours	\$5,700

SKID LOADERS & ACCESSORIES

Gehl 7600, 90 HP, 82" Bucket, 2001, Cab, 2 Spd, Hand & Foot Controls	\$28,800
Gehl 5635SX, 60 HP, 72" Bucket, Case Hand Controls	\$15,950
Gehl 5620, 56 HP Diesel, With Bucket, 2450 Hours, 1989	\$6,795
Gehl 3000, 25 HP Gas, Nice	\$3,200
Gehl AL20DX, w/Trailer & Attachments	\$27,500
Case 1840, 50 HP, 72" Bucket, 2524 Hours, 2000, Excellent Condition	\$12,800
NH LS190, 83 HP, No Bucket, 2000, 1600 Hours, 2-Speed, Exc Cond	\$24,700
NH LS190, 83 HP, No Bucket, 2001, 600 Hours, 2-Speed	\$26,900
Case 65" Bucket	\$250
New Stone Forks	\$999
New Silage Mill (Bunker Buster)	Call
New Pallet Forks	\$650-\$725

SPRAYERS

New 3 Navigator 575, 45 Foot Eagle Boom, High Wheel	Call
New NL155 3-Point, 33 Foot Boom	Call
New CA100 Gallon Cannon Sprayer	Call
New 3-Point and Pull-Type Estate Sprayers	Call
AgChem Sprayer 3 Point, 250 Gal, 45 Ft Boom, Foam Markers	\$2,600

HAY AND FORAGE EQUIPMENT

Gehl 2365 Disc Conditioner, 10'3" Cut	\$11,900
Kuhn Disc Conditioner 13'2" Cut, Standard Hitch	\$12,900
Vicon KMR 3200 Disc Conditioner, 1,000 PTO, 2 Point, 1997	\$9,550
NH 2450 Mower Conditioner, Diesel, Cab w/Air, 12' Cut, 1994	\$21,400
Hesston 1160 Mower Conditioner, 12 ft Cut	\$4,500
Hesston PT-7 Mower Conditioner, 7 ft Cut	\$2,100
Gehl 2240 Mower Conditioner, 12 ft Cut	\$1,100
MF 41 Sickle Bar Mower, 3-Point, 7 Foot	\$725
New Vicon Hay Rake, 13 ft 9 in	\$4,995
Pequea Bale Body 8-Ton Gear	\$2,350
Hesston 5545 Baler, 4x5 Bale Crowder Wheels	\$4,400
Bale Carrier 3-Point Hitch, 2-Prong, Heavy Duty	\$395
New Idea Bale Elevator, 45 ft, Electric Motor	\$1,200
New Idea Bale Elevator, 31 ft, 1 1/2 HP Electric Motor	\$1,200
Fox 656 Forage Blower	\$375
Gehl 920 Forage Box, 16 Ft, 3 Beater, Roof, 10 T Single Axle	\$3,100
Badger Forage Box, 12-Ton Gear, 16 Ft, 3 Beaters, Roof	\$3,500
IH Forage Box, 16x6, 3 Beaters, Roof, 12-Ton Single Axle	\$1,295
Gehl 1060 Harvester With Metal Stop	\$4,400
Gehl 750 Harvester with 1000, 6 ft Hay Head	\$1,800
Gehl 1000 Harvester	Selling For Parts
IH 720 Harvester, with 2-Row Corn Head & 6 Ft Hay Head	\$3,875
N H 790 Harvester, no Heads	\$7,500
MF 510 Combine, Diesel, w/13-Ft Grain Table, & MF 43 Corn Head	\$2,800

CULTIVATORS AND ROTARY HOES

Ford Cultivator, 3-Point Hitch, 4 Row, Danish Tine	\$600
JD 400 Rotary Hoe, mounted, 15 ft Wide, Folds	\$825

TILLAGE EQUIPMENT

Ford Plow 3x16 Mounted, Auto Spring Reset	\$1,175
Dunham/Lehr Cultipacker, 10 ft, 17" Rollers	\$850
Brillion Chisel Plow Subsoiler, 7 Tooth Ripper, 3 Point	\$1,195
Bush Hog Chisel Plow, 3 Pt With Gauge Wheels	\$1,185
Case Chisel Plow	\$1,150
IH Chisel Plow, 10 Tooth, Pull Type	\$1,250
Mohawk Chisel Plow, 8 Tooth, 3 Point with Gauge Wheels	\$900
White Chisel Plow, 12 Tooth, 3 Point	\$995
Bush Hog Disc Harrow, 10 1/2 ft, New Discs, Transport Type	\$1,450
Bush Hog Disc Harrow, Transport Type Wing Disc 17 ft	\$2,300
King Disc Harrow, 5 Ft Wide, 3 Point, 7 1/2" Spacing	\$575
Oliver 252 Disc Harrow, 11 Ft Cutting Width	\$1,650
Krause Disc Harrow, 13 ft, 15" to 16" Discs, Transport Type	\$1,095
White 252 Disc Harrow, 11'6" Cut, 7 1/2" Spacing, Good Disc Blades	\$1,200
Glencoe Field Cultivator, 12 1/2 ft, with Buster Bar, Hyd Lift Cyl	\$1,750
Field Cultivator Danish Tine 14 1/2 ft, Folding Wings & Tine Harrow	\$1,600
IH Field Cultivator, 13 ft Pull-Type Spring Cushion Shanks	\$1,095
Ford Field Cultivator, 12 ft Wide, Transport Type	\$525

MANURE EQUIPMENT

Gehl 1315 Manure Spreader, 1998, Tandem Axle, Nice Condition	\$7,900
New Holland 676 Manure Spreader	\$1,500
Husky Manure Pump, 32 Ft, 1000 PTO, 2 Point Hitch	\$4,500

FEEDMAKING EQUIPMENT

New Penta 3000 Vertical Mixer with Cross Conveyor, 300 cu ft	\$18,900
Gehl 8335 Mixer Feeder, 335 cu ft, Flip-up Discharge	\$13,900
Gehl 7210 Mixer Feeder, 210 cu ft, Flip-up Discharge	\$5,200
Jay-Lor 500 Mixer Feeder, Rt Side Discharge, 500 Cu Ft, Scales	\$8,900
Luck-Now 285 Mixer Feeder, 285 cu ft with Scale	\$9,650
Gehl 125 Grinder Mixer, 100 Bushel	\$6,350

MISCELLANEOUS EQUIPMENT

General Trailer, 14 Foot Deck with 4 Foot Beavertail, 15 Ton GVW	\$3,995
Parker Gravity Box	\$995
Parker Gravity Box	\$995
New Box Scraper Blade Pequea 8 Ft, 3-Point Hitch	\$395
Scraper Blade 6 ft Wide, 3-Point Hitch	\$400

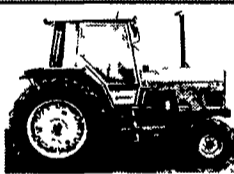
New UFT 5310 No-Till Drill, 10' width - Available For Rental

Used Equipment Specials

White 6125
4 WD 125 HP, 18x6
PowerShift, 1997,
1629 Hrs., Excellent
Condition
• \$39,900 #900132



MF 3140
2WD, 115 HP,
4 Speed Trans., 1993,
4694 Hours
\$25,900 #900133



MF 6180
4 WD 110 HP,
With Loader
\$39,900 #900138



MF 285
2WD, 82 HP Diesel,
8x2 MultiPower Trans,
2748 Hours
\$14,800 #900105



MF 4243
2 WD 75 HP Diesel
Cab
\$22,900 #900131



MF 4243
2WD, 75 HP Diesel,
12x4 Trans.,
1998, 230 Hours
\$18,900 #900134



AGCO Allis 5650
4 WD 55 HP Diesel,
12x12 Trans., 980 Hours,
w/680 Loader
\$16,900 #900124



Gehl 125
Grinder Mixer
100 Bushel
\$6,350 #04726



Gehl 4835SXT
Skid Loader
57 HP Diesel,
68" Bucket, 1998
\$10,400 #05515



Kuhn Disc
Conditioner
13'2" Cut,
Standard Hitch
\$12,900 #05152



LEBANON VALLEY IMPLEMENT COMPANY, INC.

700 EAST LINDEN STREET, RICHLAND, PA 17087

Monday - Friday 7:30-5
Saturday 7:30-12

717-866-7518

EMAIL: sales@lebanonvalleyimplement.com
www.ironweb.com/lebanonvalley

