

Everlast is stronger.

Everlast makes metal roofs and sides that are **substantially stronger than its competition**. Everlast II does not buckle as easy during erection, less popping and buckling while walking on it. Higher wind and snow loads. More attractive.

Everlast Roofing, Inc., 239 N. 5th Ave., Lebanon, PA 17046
Call toll free 1-800-339-0059 for info & nearest dealer
(Mid-Atlantic, New England, Midwest)

POLE BUILDINGS

Horse Barns
Riding Arena
Equipment Storage
Garages
Commercial Buildings



Unlimited Structures, Inc.
800-858-7297



S.M.S. BUILDERS

762 Maple Grove Road • New Holland, PA 17557
717-354-8755

Riding Arenas



Storage Sheds



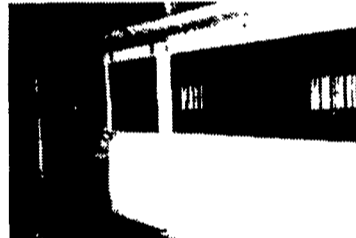
Call For Free Estimates
Financing Available

We Build The Size For Your Needs

Horse Barns



Stall Kits



SMUCKER CONSTRUCTION
AGRICULTURAL - RESIDENTIAL
SPECIALIZING IN POLE BUILDINGS
DAN SMUCKER

135 CHURCHTOWN ROAD
NARVON, PA 17555

717-768-8606
FAX 717-768-3264

STEEL BUILDINGS - INEXPENSIVE

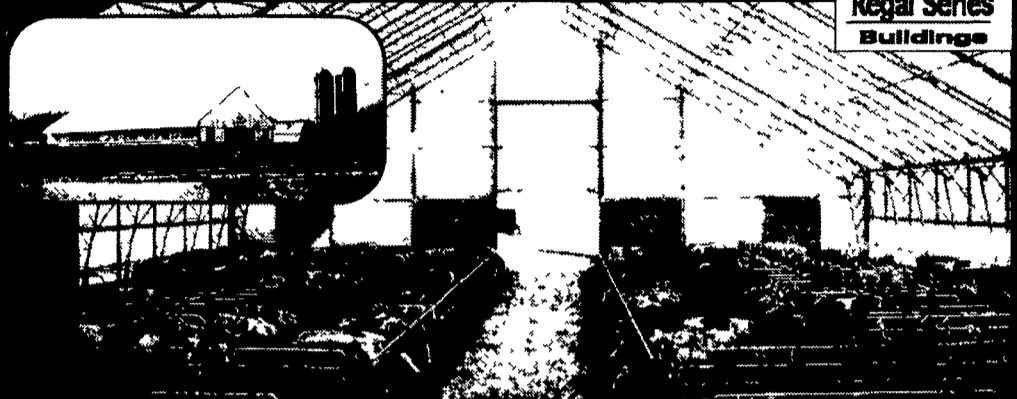
We Build All Year
ESTIMATES FREE

OCORLE

SAVE! Post Frame Steel Bldgs
FALL-WINTER SPECIALS
24'x30' PF Bldgs \$4,900
Erected All Sizes Available
Building Pkgs Available

STEEL BUILDING COMPANIES, LTD.
Quality - Not Undersold
717-564-6886

We have...



Regal Series
Buildings

**the brighter side of the industry
and more!**

Offering You the Steel Frame and Poly Cover Building Solution
Milking Parlors - Free Stall Barns - Machinery Sheds

PROFESSIONALLY ENGINEERED

CLEAR SPAN DESIGN FOR UP TO 240' WIDE
AESTHETICALLY PLEASING TO THE LANDSCAPE
NATURALLY LIGHTED FOR A HEALTHIER ENVIRONMENT

John Edward Weaver (Sales) (570) 672-2213
David Keener (Office) (570) 672-9886



Sabre
Shelters

Call to find out about our options for economical
animal housing and round bale storage

We Cover
BUILDING SYSTEMS

- 30x50x12
- 2-10'w x 10'h garage doors
- 1-3' entry door

\$13,250

- 40x60x12
- 1-12'w x 12'h sliding door
- 1-10'w x 10'h garage door
- 1-3' entry door

\$16,500

- 40x80x12
- 1-12' x 12'h sliding door
- 1-10'w x 10'h garage door
- 1-3' entry door

\$21,400

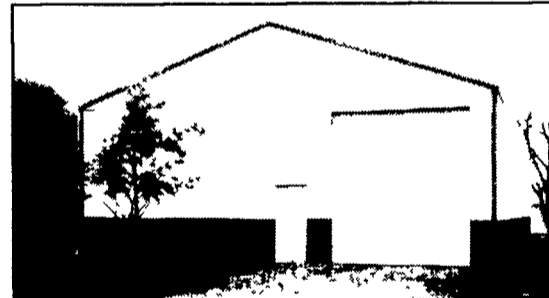
- 50x96x14
- 1-14'w x 14'h sliding door
- 1-12'w x 12'h garage door
- 1-3' entry door

\$28,400

- 40# per sq ft snow load on trusses

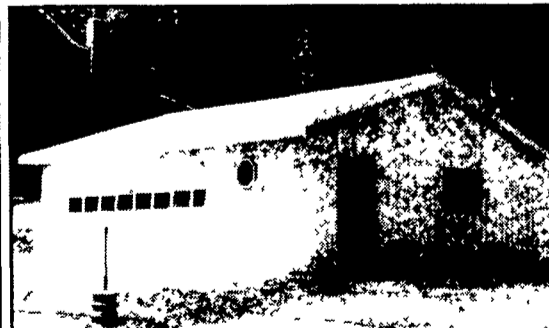
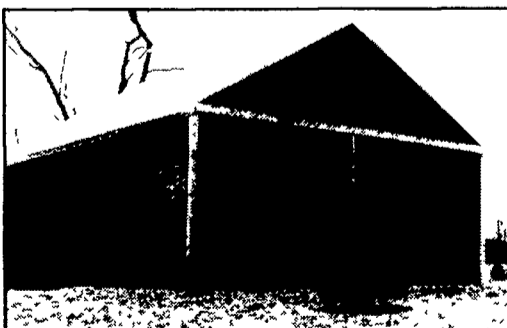
- Financing Available
- Call for free literature or see us at

www.pioneerpolebuildings.com



PPB, Inc.

Can We Build One For You!



Stock Buildings

- 24x24x8
 - 2-9'w x 7'h garage doors
 - 1-3' entry door
- \$5,750
- 24x40x10
 - 2-9'w x 8'h garage doors
 - 1-3' entry door
- \$8,400
- 30x32x10
 - 2-9'w x 8'h garage doors
 - 1-3' entry door
- \$8,400
- 30x40x10
 - 2-9'w x 8'h garage doors
 - 1-3' entry door
- \$9,250
- 30x64x10
 - 2-10'w x 10' sliding doors
 - 1-3' entry door
- \$13,250

Prices included tax, delivery materials, and labor for construction



Pioneer Pole Buildings, Inc.

716 South Rt. 183, Schuylkill Haven, PA 17972

Toll Free 1-888-448-2505 Fax 1-888-448-2515

www.pioneerpolebuildings.com

- 30 year warranty Everlast painted steel (your choice of color on roof, sides, trim).
- Steel is G 100 painted and heat roll formed by Everlast Inc., the best known roofing made.