

**1A CONSTRUCTION EQUIPMENT**

1994 Portec 6x21 trommel screening plant w/ stacking conveyor--\$55,000/obo. 1980 D-5 L.G.P. Dozer \$21,000/obo. 1987 966-D loader, \$49,000/obo. 1994 Hitachi EX200 2 buckets, \$35,000/obo. 570-875-2558 aft 6pm

1986 Kato 550SE excavator, 34,000 lbs, 4,500 hrs, good cond, \$12,000. 570-753-3391.

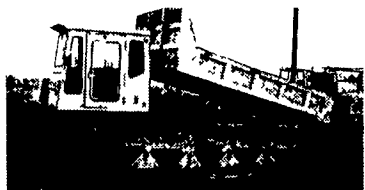
'95 Case 550E long track crawler dozer, 6-way blade, new U/C, ex cond, \$29,500. 717-436-6137

213 BW Bomag vibratory roller, 84 inch smooth drum, 23.1x26 turf tires, \$26,500. 717-436-6137

'98 20 ton tag-a-long trailer, air brakes, ex cond, \$8700. 717-436-6137

Austin Western grader, 6 wheel, recent clutch, runs decent, \$6800. 570-425-2371

IH 175B crawler/loader, rebuilt engine, Good 4 in one bucket, undercarriage 60%, bad trans, Good parts machine, best offer. 717-862-3970



Morooka MST-2500 Crawler Dump  
rubber tracks rebuilt engine  
good U/C

CALL



95 JD 744E Log Forks w/Grapple  
New Rubber Ride Control AC \$42,500



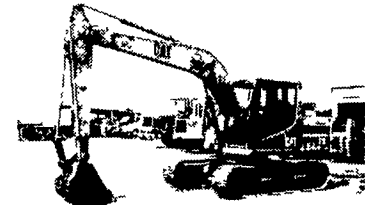
(2) 99 Case 95XT, 7100 Hrs \$13,500  
Case 1840 \$8,000



Cat 955H Crawler Loader, Good Condition \$10,000



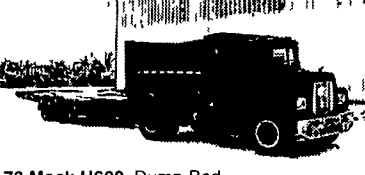
92 Komatsu WA-600 Wheel Loader, 435hp 7 1/2 yd Bucket Ready to Work \$35,000



92 Cat 312 Excavator \$30,000



88 JD 450G, Good U/C 6 Way Blade Rebuilt Engine \$19,000



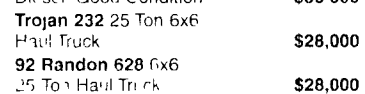
73 Mack U600, Dump Bed Good Rubber 18' Tandem Axle Tilt Bed Tag Along Air Brakes \$6,000 \$3,500



84 Cat 973 Excellent UC OROPS \$36,500



92 Terex Haul Truck 3066 Cummins Diesel Good Condition \$36,000



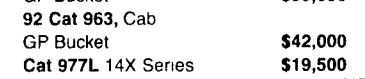
Trojan 232 25 Ton 6x6 Haul Truck \$28,000



92 Randon 628 6x6 25 Ton Haul Truck \$28,000



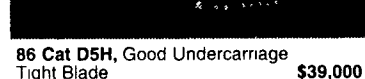
Ford A64 Wheel Loader, Cab w/Heat \$14,000



88 Cat 963, OROPS 4 in 1 Bucket \$28,500



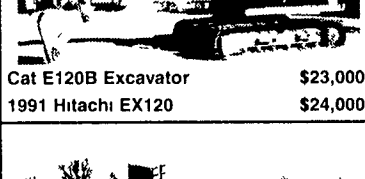
88 Cat 963, Cab GP Bucket \$36,000



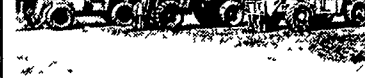
92 Cat 963, Cab GP Bucket \$42,000



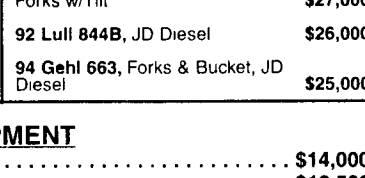
Cat 977L 14X Series \$19,500



86 Cat D5H, Good Undercarriage Tight Blade \$39,000



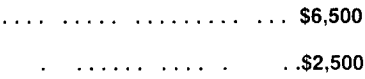
92 Cat D5H XL, Cab 6-Way Blade \$42,500



Cat E120B Excavator \$23,000



1991 Hitachi EX120 \$24,000



94 Lull 644 Highlander II, 6000 Lb Capacity 34 Reach, JD Diesel 48' Pallet Forks w/Tilt \$27,000



92 Lull 844B, JD Diesel \$26,000



94 Gehl 663, Forks & Bucket, JD Diesel \$25,000

**EQUIPMENT**

JD 555 Crawler Loader \$14,000  
Cat 980B Wheel Loader w/Forks \$18,500  
94 Cat 416B 4x4, Ext. Hoe. \$25,500

**PAVING EQUIPMENT**

Hyster 350C Roller \$5,000  
Case 252 Tandem Vibratory Roller \$6,500  
95 Ingersol Rand BA30 Tandem Vibratory Roller \$6,500  
Stone Wolfpack 2500 double drum asphalt roller \$2,500

**Weaver's Equipment Sales**  
RD#1, Box 418, Milton, Pa. 17847  
Phone: 570-523-9598



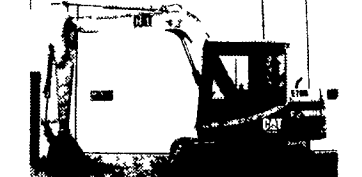
99 Bobcat 863, 2280 Hrs New Tires \$9,500  
99 Bobcat 753, 2150 Hrs New Tires \$8,750  
97 Bobcat 751, 2020 Hrs, New Tires \$7,500



98 Komatsu D41E-6, OROPS, 2640 Hrs 6-Way Blade 80% UC \$39,000



95 JCB 215 Cab 4120 Hrs 4x4 Ext Hoe \$24,000



89 Cat E70B, Cab 4180 Hrs Steel Tracks \$14,000  
93 Cat E70B, 3000 Hrs Rubber Tracks Call  
93 Hitachi EX60 5600 Hrs Hyd Thumb Call



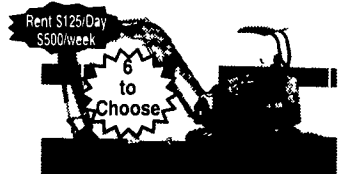
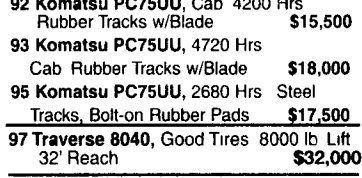
88 Ingersol Rand SD40D, 2275 Hrs 54 Drum Drum Drive w/Shell Kit & Knockdown Blade \$19,500



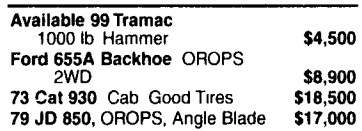
92 Cat D4C Series III, Canopy 4000 Hrs 60% UC Call  
95 Cat D4C Series III, 4200 Hrs w/Winch \$29,500



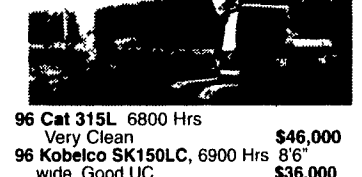
92 Komatsu PC75UU, Cab 4200 Hrs Rubber Tracks w/Blade \$15,500  
93 Komatsu PC75UU, 4720 Hrs Cab Rubber Tracks w/Blade \$18,000  
95 Komatsu PC75UU, 2680 Hrs Steel Tracks, Bolt-on Rubber Pads \$17,500  
97 Traverse 8040, Good Tires 8000 lb Lift 32' Reach \$32,000



96 Komatsu PC40FR 3200 Hrs \$14,500  
96 Komatsu PC40R, 3200 Hrs \$15,000  
94 Komatsu PC40, 3150 Hrs \$13,000  
93 Komatsu PC40, 3480 Hrs \$12,500  
92 Komatsu PC40, 4400 Hrs \$13,000  
90 Komatsu PC40, 3 580 Hrs \$12,000  
94 Komatsu PC45, Cab 3280 Hrs Steel Tracks \$16,000



Available 99 Tramac 1000 lb Hammer \$4,500  
Ford 655A Backhoe OROPS 2WD \$8,900  
73 Cat 930 Cab Good Tires \$18,500  
79 JD 850, OROPS, Angle Blade \$17,000



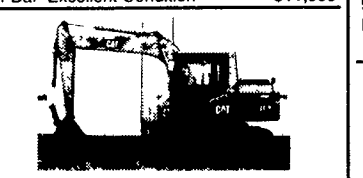
96 Cat 315L 6800 Hrs Very Clean \$46,000  
96 Kobelco SK150LC, 6900 Hrs 8'6" wide Good UC \$36,000



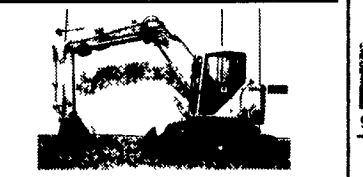
2000 Hitachi EX200-5 2900 Hrs \$69,000



2000 Mustang 2050, 580 Hrs T-Bar Excellent Condition \$11,900



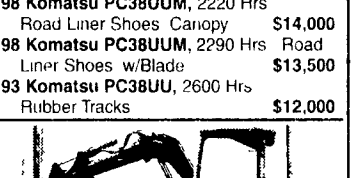
96 Cat 311B, 3300 Hrs 20' Shoes \$36,500



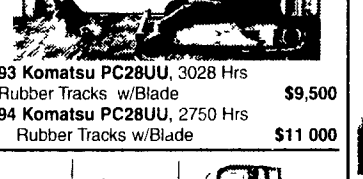
96 Cat 307SSR, 1574 Hrs Rubber Tracks w/Blade Side Shift Boom \$25,500



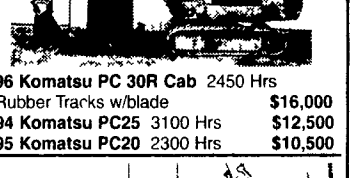
98 Komatsu PC38UU, 2430 Hrs Canopy Road Liner Shoes w/Blade \$14,000  
98 Komatsu PC38UU, 2220 Hrs Road Liner Shoes Canopy \$14,000  
98 Komatsu PC38UU, 2290 Hrs Road Liner Shoes w/Blade \$13,500  
93 Komatsu PC38UU, 2600 Hrs Rubber Tracks \$12,000



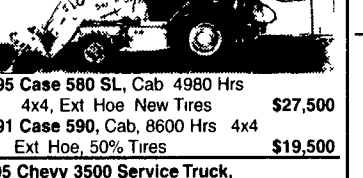
93 Komatsu PC28UU, 3028 Hrs Rubber Tracks w/Blade \$9,500  
94 Komatsu PC28UU, 2750 Hrs Rubber Tracks w/Blade \$11,000



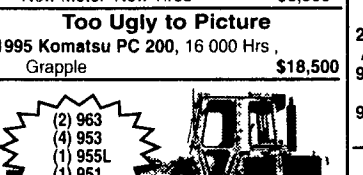
96 Komatsu PC 30R Cab 2450 Hrs Rubber Tracks w/blade \$16,000  
94 Komatsu PC25 3100 Hrs \$12,500  
95 Komatsu PC20 2300 Hrs \$10,500



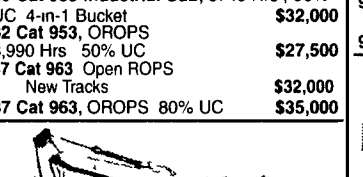
95 Case 580 SL, Cab 4980 Hrs 4x4, Ext. Hoe New Tires \$27,500  
91 Case 590, Cab, 8600 Hrs 4x4 Ext Hoe, 50% Tires \$19,500  
95 Chevy 3500 Service Truck, 6 5 Dsl \$8,900  
88 Ford F350 Dually Mechanics Body Crane Electric Lift Gate New Motor New Tires \$6,900



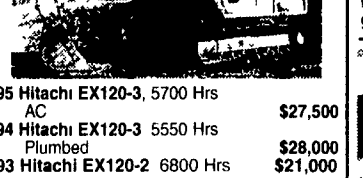
Too Ugly to Picture  
1995 Komatsu PC 200, 16 000 Hrs, Grapple \$18,500



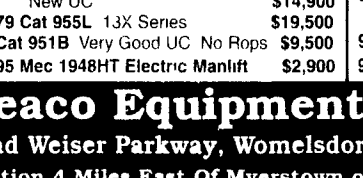
90 CAT 953, Cab, 50% UC \$37,000  
94 CAT 953B Cab 8360 Hrs 90% U/C New Paint \$65,000  
86 Cat 953 Industrial Cab, 8740 Hrs, 90% UC 4-in-1 Bucket \$32,000  
82 Cat 953, OROPS \$27,500  
8,990 Hrs 50% UC \$32,000  
87 Cat 963 Open ROPS New Tracks \$35,000  
87 Cat 963, OROPS 80% UC \$35,000



95 Hitachi EX120-3, 5700 Hrs AC \$27,500  
94 Hitachi EX120-3 5550 Hrs Plumbed \$28,000  
93 Hitachi EX120-2 6800 Hrs \$21,000  
93 Hitachi EX120-2, 3100 Hrs \$24,500



88 JD 455G Cab \$19,500  
84 JD 455D Crawler Loader New UC \$14,900  
79 Cat 955L 13X Series \$19,500  
Cat 951B Very Good UC No Rops \$9,500  
95 Mec 1948HT Electric Manlift \$2,900



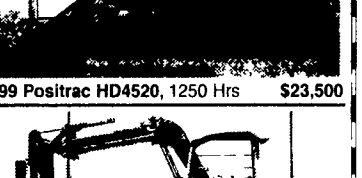
96 Cat 312, AC 5230 Hrs New Paint \$32,500  
93 Cat 312, 5670 Hrs \$28,000  
93 Cat 312, 5700 Hrs AC New Paint \$29,000



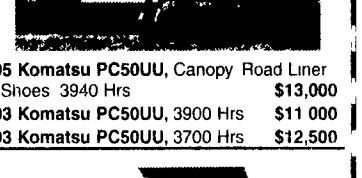
96 Ford 575D, Cab, 4450 Hrs 4x4 Ext Hoe \$23,500



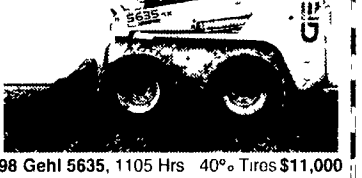
99 Positrac HD4520, 1250 Hrs \$23,500



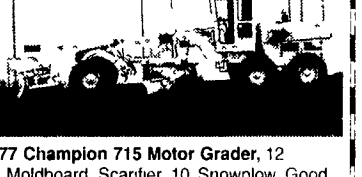
95 Komatsu PC50UU, Canopy Road Liner Shoes 3940 Hrs \$13,000  
93 Komatsu PC50UU, 3900 Hrs \$11,000  
93 Komatsu PC50UU, 3700 Hrs \$12,500



98 Gehl 5635, 1105 Hrs 40% Tires \$11,000  
98 Case 1840, 2830 Hrs 50% Tires \$9,500



77 Champion 715 Motor Grader, 12 Moldboard Scarifier 10 Snowplow Good Tires \$13,000



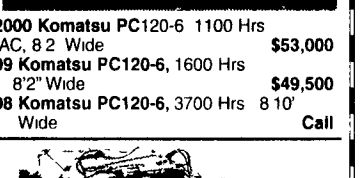
94 Cat D3C Series III, Cab, 50% UC \$25,000



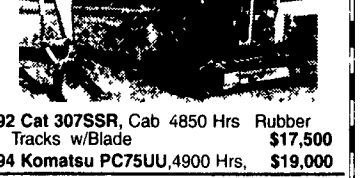
2000 Komatsu PC120-6 1100 Hrs AC, 8 2 Wide \$53,000  
99 Komatsu PC120-6, 1600 Hrs 8'2" Wide \$49,500  
98 Komatsu PC120-6, 3700 Hrs 8'10" Wide Call



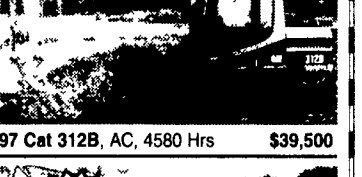
92 Cat 307SSR, Cab 4850 Hrs Rubber Tracks w/Blade \$17,500  
94 Komatsu PC75UU, 4900 Hrs, \$19,000



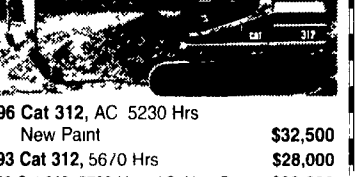
97 Cat 312B, AC, 4580 Hrs \$39,500



96 Cat 312, AC 5230 Hrs New Paint \$32,500  
93 Cat 312, 5670 Hrs \$28,000  
93 Cat 312, 5700 Hrs AC New Paint \$29,000



96 Cat 312, AC 5230 Hrs New Paint \$32,500  
93 Cat 312, 5670 Hrs \$28,000  
93 Cat 312, 5700 Hrs AC New Paint \$29,000



96 Cat 312, AC 5230 Hrs New Paint \$32,500  
93 Cat 312, 5670 Hrs \$28,000  
93 Cat 312, 5700 Hrs AC New Paint \$29,000

Rentals Available  
Day, Week, or Month

**Weaco Equipment**

4009 Conrad Weiser Parkway, Womelsdorf, PA 19567

New Location 4 Miles East Of Myerstown on Rt. 422

610/589-5555

Toll Free 877/529-9328

Financing and Lease  
Purchase Available  
No Sunday Calls