

Antique Reports

MACCAUGHERN, GARNER, STARRY, AND OTHERS SALE
A public sale of antiques, household goods, collectibles, and tools was conducted Wednesday, March 19, for Anne

MacCaughern Estate, Mr. & Mrs. Robert Garner, Helen Starry, and others at the Horst Auction Center in Ephrata. There were 442 registered bidders.

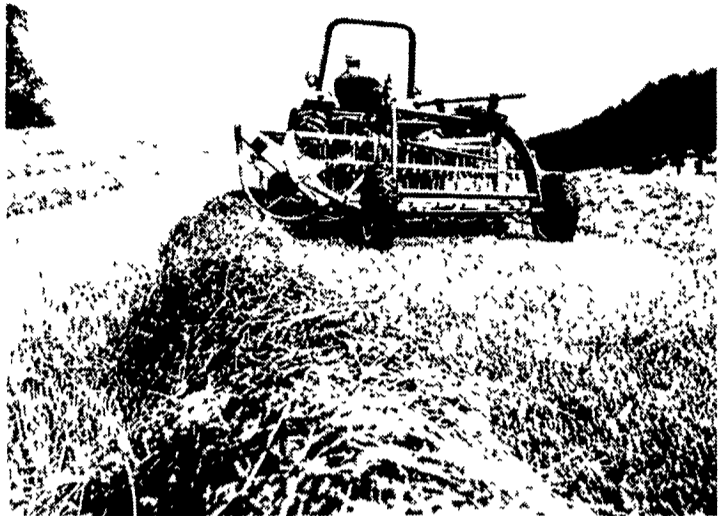
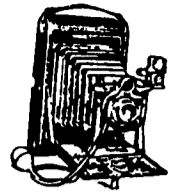
Items sold included a checkerboard table, \$1,000; a mahogany bachelor's chest, \$900; a tilt top table, \$525; a set of four Windsor chairs, \$500; an oak roll top desk, \$475; a painted five drawer chest, \$425; a Wurlitzer spinet piano & bench, \$425; an inlaid flip top card table, \$350; a cherry chest of

drawers, \$325; a cherry dropleaf table, \$275; a cherry chest on chest, \$475; a maple slant front desk, \$250; a stepback cupboard, \$210; an oak 20 drawer cabinet, \$200; a set of six oak Horning chairs, \$330; a set of six plank bottom chairs, \$200; a maple bed, \$150; a needlepoint bench, \$140; a flip top card table, \$130; a swivel rocker/rocker, \$120, a

large Oriental room rug, \$425; a pine dropleaf table, \$160; a hall stand, \$190; a blue painted one door cupboard, \$175; a purple daisy min. Shelley cup and saucers, \$775; an old German clock, \$375; a Tole decorated tray, \$120; ruby rimmed glassware, \$180; an album of postcards, \$275; a box of postcards, \$230; a Lenox blue tree China set, \$775, a set of Haviland china, \$290; an Iron bank, \$100,

a set of Noritake china, \$130; two Wilbur cocoa tins, \$170; a set of Church Hill Downs glasses, \$210; a pair of leaded glass windows,

\$525; a set of Royal Doulton china, \$375; an asparagus tin, \$260; and an Ironstone pitcher and bowl set, \$150.



Rolabar® rakes better by far -

Don't settle for second best when it comes to rakes. Choose the original - a dependable New Holland Rolabar® rake. The rake more farmers buy over all other brands combined. Why? Because its rugged construction makes it one hard-working, hay-grabbing machine.

See the original Rolabar rake today.



NEW HOLLAND

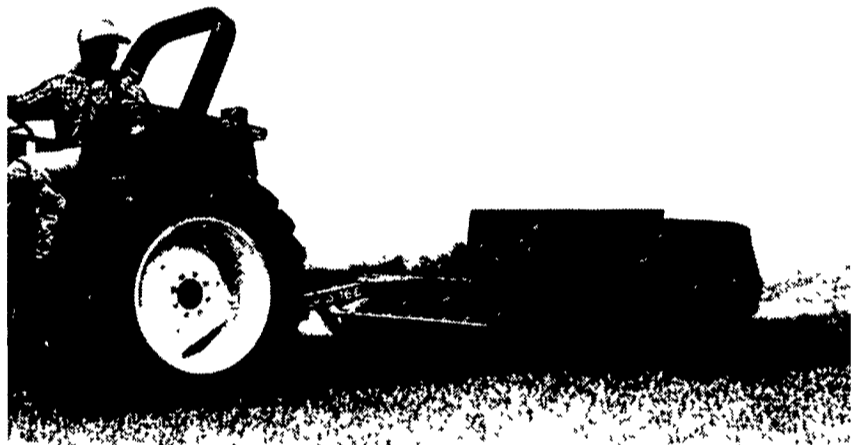
Fluffed up... never roughed up

If a storm hits while you're making hay, you'll need the New Holland Model 166 windrow inverter. It helps to dry hay fast, so you can bale or chop sooner. The 166 gently lifts, fluffs and turns windrows without roughing up the hay. So, you move your windrows onto dry ground for faster drying and retain valuable leaves.

For hay that's fluffed up not roughed up, check out the 166 today.



NEW HOLLAND



Why wait for the sun

Speed up drying time with a New Holland tedder. It lifts downed crop up so air flows through it. Choose from three tedders - 8'6" Model 157, 16'5" Model 163, or 22'8" Model 169.

Stop in. We'd like to show you how our tedders can help you put up quality hay.



NEW HOLLAND

SEE YOUR NEAREST NEWHOLLAND DEALER FOR DEPENDABLE EQUIPMENT & SERVICE

PENNSYLVANIA

Abbottstown, PA
Messick Equipment
RD 1, Box 255A
717-259-6617

Annville, PA
BHM Farm
Equipment, Inc.
RD 1, Rte. 934
717-867-2211

Carlisle, PA
R&W
Equipment Co.
35 East Willow Street
717-243-2686

Elizabethtown, PA
Messick
Equipment
Rt. 283 - Rheems Exit
717-367-1319

New Holland, PA
A.B.C. Groff, Inc.
110 South Railroad
717-354-4191

Pitman, PA
Schreffler Equipment
Pitman, PA
570-648-1120

Tamaqua, PA
Charles S.
Snyder, Inc.
R.D. 3
570-386-5945

MARYLAND

Frederick, MD
Ceresville New Holland, Inc.
Rt. 26 East
301-662-4197
Outside MD, 800-331-9122

Hagerstown, MD
Antietam Tractor &
Equipment, Inc.
20927 Leitersburg Pike
800-553-6731
301-791-1200

Rising Sun, MD
Ag Industrial Equipment
Route 1,
50 N. Greenmont Rd.
1-800-442-5043

NEW JERSEY

Washington, NJ
Smith Tractor &
Equip., Inc.
15 Hillcrest Ave.
908-689-7900

Bridgeton, NJ
Leslie G. Fogg, Inc.
Canton & Stow Creek
Landing Rd.
609-451-2727
609-935-5145

Woodstown, NJ
Owen Supply Co.
Broad Street & East Avenue
609-769-0308

