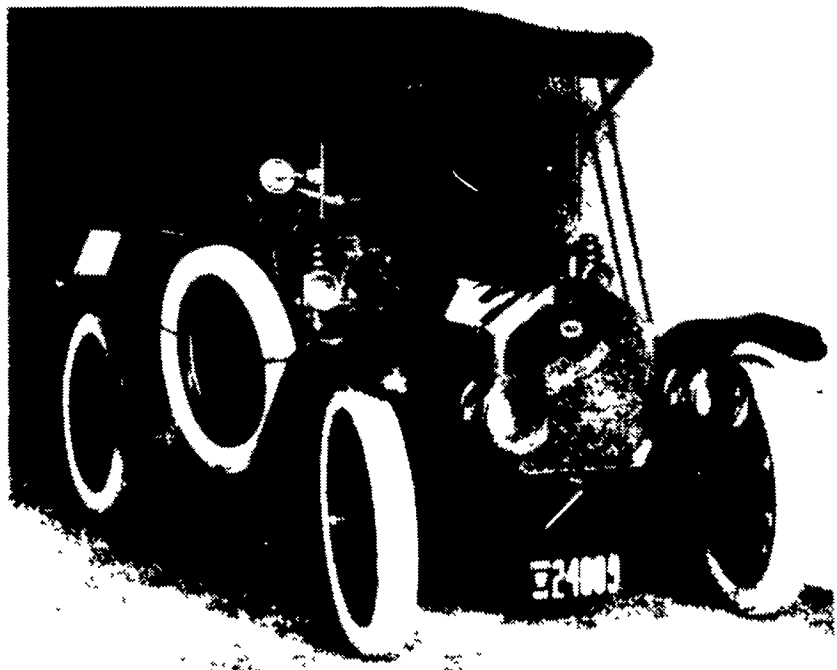


Pullman Touring Car History Sought



Paul Vaughn, Willow Street, purchased this 1910 Model K Pullman touring car and is trying to retrace its history. Vaughn said that Pullman automobiles were built in York from 1903-1917. This car was originally sold in York. Vaughn would like information about the original owners and also about the car, which later was traced to New York, Canada, and Kansas before being sold in the Hazelton area in 1950. The car was later found in a barn owned by a German farmer. Vaughn wants information about the car and its owner. Call (717) 464-4704.



VISIT US AT:
www.probstauction.com

PUBLIC AUCTION

SAT., MARCH 29, 2003

@ 9:00 A.M.

LOCATION: 312 Chestnut Grove Rd. Village of Highville, Minor Twp. Inc. Co. PA
DIRECTIONS: Between Salt Harbor & Creswell along River Rd.
PICK-UP TRUCKS: 1970 Custom Red Ford 100 1989 Ford Ringo
GUNS, Shotguns: Ithaca Field Grade 20 ga. dble barrel Reming Model 870 Wingmaster 12 ga pump Winchester Model 1200 12 ga pump J. Stevens & Iver Johnson 12 ga single shots Rifles: (2) 22 cal single shots J. Stevens Arms & Tools Co. 22 cal pistol Pock. Knives Red Rose feed Barlow etc Lge Kabar hunt knife Winchester paper shot CLOTH black powder bags Dupont black powder tin FARM EQUIP: (2) H Farmall tractors set H tires cultivators Catr front end loader #327 New Holland manure sprayer (PTO) EARLY WOOD SPOKED CORN WAGON, McCorm Deering sickle mower Farmhand 5 wheel hay rake lime spreader Bradley manure spreader disc harrows 8 double cultipacker lge roller 3 sec spring harrow sev 2 B trailer plows (3) flat & (2) bin wagons Smoker 20 bale elevator dirt scoop tow scraper wood sled air compressor spike harrows McCorm Deere cultivators fertilizer spreader single bin walk plow potato digger dbl hole corn sheller 2 prong forks corn & hay knives bag wagon burlap bags wood tongues misc. butchering: meat cleavers scrapers butcher knives meat hks Tobacco Related: (2) Minnich bale presses 8000 tobacco lath single ladder shears lot spears Lot Tack: Hemes bridles single & dbl trees harness horse collars sulkie ANTIQUES: AXES: Lanc. signed Broad, Goosewing & post hole Wood: buggy seat chick crates berry crates lot shutters lot spoke wheels, lot pulleys saw cutter, wheat cradle Conestoga wagon jack Crocks: lg jugs lot puddin Copper: wash boiler Tin: egg & spring scales chick feeders Cast Iron: implement seat cherry seeder pig troughs dbl hay hook cut saw blade milk cans slivmak er locks kettle hooks quints egg basket burlap bags corn husk pegs POWER & HAND TOOLS: Echo & Stihl weed eaters (2) Echo chain saws Little Giant die set vise rakes alum step ladder, bull rope log chains breast auger buck saw dig iron scythe level block & falls, crow bars water can LOT GOOD PICS @ www.probstauction.com FOOD SERVED

AUCTION BY BENJAMIN M. MURRY
PROBST FAMILY AUCTION
ERIC R. PROBST, Auct.
AU-001856-L (717) 464-3700
KARL BOLTZ, Auct.

Paisley Auctions.com

Comprehensive Auction Marketing "Since 1987"

The Wilma Hoffecker Estate
With Additions

Antiques • Collectibles • Rugs
Artwork • Firearms
Military Items • Coins
Stamps • Clocks • Tractor
Mowers • Tools & More
9:00 AM SAT. 4-05-03

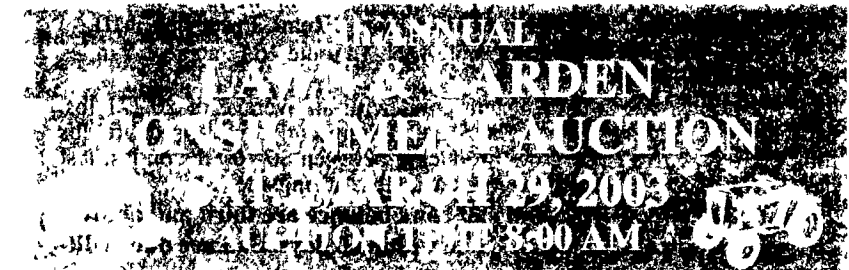
1080 Wawaset Road, (Rt. 842) Kennett Sq. PA
Newlin Township, Chester County.
Between West Chester and Unionville,
directly across from Barnard's Orchard.

If you love auctions, need fresh merchandise or suffer from a slight case of cabin fever, then you need to attend this exciting kick-off sale of the new auction season. After weeks of prep work, we're still turning up surprises. Like the two German Lugers we just found. Join us for what is sure to be a great day of treasure hunting. A full listing with photos will be available soon at www.PaisleyAuctions.com

Payment terms are cash, check w/proper ID, Visa & MasterCard

6% sales tax and a 7% purchase premium apply

Col. Rodger Paisley, GPPA
Auctioneer • Appraiser • Consultant
Downingtown, PA 610.873.8860
Member PAA, NAA, AMI
PA License AU002516L
Jerry L. Johnson, Attorney



Located in Schoeneck, PA. From Philadelphia take Rt. 272 North to Rocky Ridge Auto Sales. make a left onto Schoeneck Rd. Proceed 4 miles to Auction. From Schaefferstown take Rt. 897 East to Cocalico Rd. Follow to Auction. Look for arrow signs. From Exit 21 of PA Turnpike take 272 South 4 miles to Schoeneck Road. Right on Schoeneck Road 4 miles to sale.
RIDING MOWERS: 1999 John Deere 445 Liq. Cooled 22 H.P. 60" cut Hydro PS, 1998 John Deere 155 Dsl. Hydro PS Liq. Cooled 60" cut, John Deere 455 Dsl. AWS Hydro PS 60" cut, (3) John Deere 425 Hydro AWS 54" cut, (2) John Deere 345 Liq. Cooled Hydro 48" & 54" cut (low hours), (2) John Deere Dsl. Liq. Cooled Hydro PS 50" cut, (2) John Deere F525 Hydro 48" front decks, 1998 John Deere F620 Z Track 54" cut with Power Flo bagger (550 hrs.), John Deere 430 Dsl. PS Hydro 3 pt hitch & pto, 1997 John Deere 325 Hydro 44" cut, John Deere 332 Dsl. PS Hydro 46" cut, 1999 John Deere LX 288 Hydro 54" cut, John Deere 430 DSL Hydro PS 60" cut, 2000 John Deere LX 277 Hydro 30" cut, John Deere LX 188 Liq. Cooled Hydro 48" cut, John Deere LX 186 Hydro 46" cut, John Deere LX 176 Hydro 38" cut with bagger, John Deere LX 172 38" cut, 2001 John Deere LT 155 Hydro 38" cut, John Deere 112, John Deere 130, John Deere STX38, John Deere Sabre, 1990 Gravely 48" cut, Toro Wheelhorse 270 Hydro 20 H.P. 42" cut (82 hours), Case 444 HI Wheel Hydro, Cub Cadet 129, Simplicity Broadmoor Hydro 38" cut, 1998 Cub Cadet 2130 Hydro 38" cut (471 hrs.), 1997 Cub Cadet 1641 Hydro 48" cut (290 hrs.), Kubota T1600 Dsl. Hydro 44" cut (400 hrs.), Kubota G1800 Dsl. Hydro 48" cut, Dixon ZIH 48, Ariens 16 HP, White 12 HP, Yard Machine 18 HP, 12 HP Wheelhorse. Plus many more.
COLLECTIBLES: John Deere 140 Hydro. 1964 John Deere 110 3 spd. (both restored)
COMMERCIAL MOWERS: 2000 Scag Mid Deck 17 HP 42" cut (83 hrs.), (2) Grasshopper 721D Dsl. 61" cut, Grasshopper 428 28 HP Dsl. 72" cut (500 hrs), Toro ZTR 724 24 HP 60" cut, New Snapper 25 HP 61" front deck (with warranty), Scag 28 HP Dsl. 72" cut, John Deere F930 24 HP 72" cut, (2) Scag 3 wheel 61" cut, Ferris 3 wheel 61" cut, 1997 John Deere F935 Dsl. 60" cut, (2) John Deere F725 48" & 54" cuts, Woods 5120 ZTR 44" cut.
WALK BEHINDS: John Deere 14SB Silver deck, (5) John Deere JX75, Honda Harmony, New Snapper 12-1/2 HP 36" cut, Kees 48" 5 spd., New Snapper 17 HP 48" (with warranty), John Deere 2000 GS30 36" with mulch kit.

MANY NAME BRAND: ROTOTILLERS, SNOWBLOWERS, CHAINSAWS, WEEDWACKERS, BLOWERS, ETC.
MISCELLANEOUS: 16" Tandem Axle landscape trailer with ramp, 10 Single Axle trailer with ramp, Oregon chain saw sharpener, New Snapper 25 gallon Tow Sprayer, new Agri Fab Equipment, Rollers, Sprayers, Seeders, Spreaders, Wheelbarrows, Groomers, Dump carts, New Echo engine mister sprayer, 4' Alum tool box, New Honda 5.5 HP 2500 PSI pressure washer, Go carts, JD Power Flo Bagger (425-455), JD Bagger with cart, riding mower seats & hoods. Field full of miscellaneous as-is riders & walk behinds for parts.
Note: If you are looking to buy or sell quality equipment plan to attend the auction. We have the nicest and best equipment ever offered. Bring your friends and neighbors.
Cash only. Out of state buyers must have a Bank Letter of Credit if paying by check. Some items subject to prior sale. All items sold as is. Removal 2 weeks. Receiving dates March 22nd until 3:00 PM. March 27th and 28th until 9:00 PM. No items accepted day of sale. Auction site phone (717) 336-7809.

PUBLIC AUCTION

of
ANTIQUES, QUALITY FURNITURE,
GLASSWARE, TOOLS, HOUSEHOLD
GOODS & 1999 BUICK LeSABRE

SEDAN
THURS., APRIL 3, 2003
3:00 PM

LOCATED AT: Gap Fire Hall, Pequea Avenue,
Gap, Lancaster Co., PA. From Route 30 &
Route 41 in Gap take Route 30 West to Pequea
Ave (1st left), turn left to fire hall on right.

* ANTIQUES, FURNITURE
& APPLIANCES *

5 pc. cherry bedroom suite, 4 pc. cherry bedroom suite, PA house cherry dining room suite, sm. cherry drop front desk, coffee & end tables, sofa, chairs, round end table, rocker, asst. lamps, dinette set, plant stand, file cabinet, shelving, chest freezer, color TV's, VCRs, sewing machine, 6 gun gun case, dinette, jelly cupboard, foot stools, high chair, trunk, sofa & chair, recliner, end tables & more.

* ANTIQUES, GLASSWARE
COLLECTABLES &
HOUSEHOLD GOODS *

5 Hummels, costume jewelry, Wedgewood glass Egyptian chalices, water pitchers, Bavarian birds, W. German Friar mugs, Meito Japan china service, silver service for 8, baskets, crocks, jugs, wine set, coffee grinder, dolls, teddy bears, linens, clocks, asst. kitchen items, vacuum, pictures, luggage, sausage stuffer, Hamilton wall clock, sprinkler can, pots & pans, lamps & much more yet to unpack.

* TOOLS, LAWN & GARDEN ITEMS *

MTD 10/38 riding tractor, push mower, wheel barrow, Glum exterior ladder, Shop Vac, sump pump, mac tool cabinet, mac & snap-on tools, Handyman jack weed eater, wheelbarrow, garden & hand tools & more.

* CAR *

1999 Buick LeSabre 50,000 miles, silver, auto, air, 4 door, nice car

AUCTIONEERS NOTE: Fine furniture, collectables, and tools. Nice car in good condition. Don't miss it.

PAYMENT TERMS: Payment in full day of auction with cash or good PA check. No out of state checks.

AUCTION CONDUCTED FOR:
Sarah F. Rees Estate ETAL
James F. Rottmund, Executor
Carole Depew, Executrix
Announcements Day of Auction Take
Precedence Over Previous Advertising.
* Plenty of Good Food Available *

AUCTION CONDUCTED BY
BARR DAVIS
AUCTIONEERS
Stephen J. Barr
AU-002422-L
James S. Davis Jr.
AU-002421-L
Gap, PA 17527
(717) 442-9221

AAAA
Pennsylvania Dutch Region

PUBLIC AUCTION

CONSIGNED CAR PARTS & CAR CORRAL

17th Annual
Consignment Auction
And Car Corral
SAT., MARCH 29, 2003
AT 8:30 A.M.

Auction will be held indoors at Antique Depot
located on Route 422 between Annville and
Cleona, PA.

DIRECTIONS
PA Turnpike Exit 20 Route 72 I-81 Exit 29, take 934
North to Lebanon, Route 422 South Annville Traffic
West on Cumberland Street. Light. turn left 1 1 miles on
Lebanon, Route 422 for 3 3 Route 422 Main St
miles. Antique Depot on Right Antique Depot on left

SOME OF THE MANY CARS EXPECTED
FOR THE CAR CORRAL
1953 Lincoln Capri 1965 Buick Century
Convertible (off frame Custom 2-dr.
restoration) 1965 Falcon Ranchero
1962 Buick Special 1964 Buick Special
Convertible Convertible
1949 Dodge 1966 Olds. 98
Meadowbrook 4 dr. sdn Convertible
(All cars subject to prior sale)

SOME OF THE MANY PARTS CONSIGNED
Mopar sheet metal; Caddy trim; '49 Plymouth parts, shop manuals, paint chips; AAAA collector plates, V8 Ford badge; '70-72 Chev. Monte Carlo pr. doors; 62-65 Nova pr. fenders, front; '66 Chevelle 4-speed console; '69 Mustang grill; '60 Ford tail lite lenses, misc. box lots; Model A Ford wheels, drums parts, fuel pumps; porcelain license plates 1906 & up. Tin license plates, Winross, Hershey, Ertyl, & Hess trucks; Tools, cans, oil bottle, literature, trim ring. Pedal Cars, NOS Distributor caps, carburetor parts, stop lite switches; Ford window wiper trans, '37-38 Chev. parts; box lots. GM sheet metal.

Accepting consignments
Friday, March 28 from 9 a.m. to 6 p.m.
Contact for AUCTION Contact for
Registration/Info CAR CORRAL
Norman Brown Registration/Info
717-866-4101 Charles Sando
e-mail: storminnorman@supernet.com 717-867-2140
Tom Ehrhart Pete Leiss 717-866-6641
717-832-1117 e-mail: tgerptom@aol.com e-mail: purplepl@lmf.net
Aaron Kaylor 717-469-0287

Bake Sale & Sub Sale by PA Dutch Region
TERMS: Cash - Personal checks accepted only by prior approval - No Bank Drafts accepted. Out of state persons must supply two (2) proper forms of identification.
NOTE Tires will not be accepted
Auctioneer Services Provided by Roger Myers and Associates AU-000653-L
Conditions by PA Dutch Region A A C A
Commission 20% on parts - no reserve on parts
CAR CORRAL \$20.00 Non-refundable
PA Dutch Region assumes no liability
Not responsible for accidents