

Northeast Broiler Fryer Parts Part I

ATLANTA, GA.
March 19, 2003

Report Supplied By USDA

Trucklot buying activity remained light and unaggressive and was generally typical of midweek trading. Offerings of breast items were at least sufficient. Dark meat cuts were available, but manageable. Wings were fully sufficient. Retail and distributive draw was seasonally slow. The market tone was about steady.

ICE PACKED BROILER/FRYER PARTS, DELIVERED TO FIRST RECEIVERS IN POOL TRUCKLOT AND TRUCKLOT QUANTITIES, CENTS PER POUND. ITEM CURRENT NEGOTIATED TRADING BREAST - B/S 150-155 TENDERLOINS 110-115 BREAST - WITH RIBS 78-79 BREAST - LINE RUN 78 LEGS 32-33 LEG QUARTERS (BULK) 20-21 DRUMSTICKS 23-24 THIGHS 22-23 B/S THIGHS 62-63 WINGS (WHOLE) 66-67 BACKS AND NECKS (STRIPPED) 10-12 LIVERS (5 POUND TUBS) 30-35 GIZZARDS (HEARTS) 45-50

INCLUDES NEW YORK CITY METROPOLITAN AREA, NORTHERN NEW JERSEY, MASSACHUSETTS, CONNECTICUT, RHODE ISLAND, AND PENNSYLVANIA (NORTHEAST OF HARRISBURG).

Northeast Broiler Fryer Parts Part II

ATLANTA, GA.
March 19, 2003

Report Supplied By USDA

ICE PACKED BROILER/FRYER PARTS, DELIVERED TO FIRST RECEIVERS IN POOL TRUCKLOT AND TRUCKLOT QUANTITIES, CENTS PER POUND CURRENT NEGOTIATED WTD VOLUME ITEM TRADING AVG /LBS BREAST - B/S 150-155 150.48 267,880 TENDERLOINS 110-115 117.75 29,410 BREAST - WITH RIBS 78-79 88.02 120,280 BREAST - LINE RUN 78 81.80 102,920 LEGS 32-33 33.08 196,800 LEG QUARTERS (BULK) 20-21 20.33 146,000 DRUMSTICKS 23-24 29.33 58,300 THIGHS 22-23 34.35 34,080 B/S THIGHS 62-63 77.69 15,240 WINGS (WHOLE) 66-67 73.64 126,560 BACKS AND NECKS (STRIPPED) 10-12 12.00 33,120 LIVERS (5 POUND TUBS) 30-35 35.00 1,520 GIZZARDS (HEARTS) 45-50 48.40 7,480

INCLUDES NEW YORK CITY METROPOLITAN AREA, NORTHERN NEW JERSEY, MASSACHUSETTS, CONNECTICUT, RHODE ISLAND, AND PENNSYLVANIA (NORTHEAST OF HARRISBURG).

Kirkwood Hay

Kirkwood, Pa.

Report Supplied By Auction
Tuesday, March 18, 2003

114 LOTS
MIXED HAY, 1ST CUTTING 120.00-185.00, 2ND 160.00-195.00
TIMOTHY, 160.00-225.00
ALFALFA 1ST CUTTING 117.00-187.00, 2ND 170.00-205.00, 3RD 170.00-197.00, 4TH 197.00-225.00.
GRASS: 115.00-210.00.
WHEAT STRAW 90.00-140.00.
BARLEY STRAW, 110.00-115.00
RYE STRAW: 82.00-107.00.
OATS: 2.50 BU
FIRWOOD: 40.00 PICK-UP LOAD.
SALE DAY TUES. 10 A.M

Weaverland Hay

New Holland, Pa.

Report Supplied By Auction
Thursday, March 20, 2003

Hay—Straw—Grain
38 LOADS
ALFALFA 162.00-210.00
TIMOTHY HAY 150.00-217.00
ORCHARDGRASS 180.00
MIXED HAY: 122.00-217.00
STRAW 92.00-135.00
FIRWOOD 50.00-80.00.
ALFALFA BALFAGE 42.00-50.00
BALE
STUBBLE HAY 112.00.
LONG LANE ROAD, NEW HOLLAND 17557, 717-355-0834

Belleville Hay

Belleville, Pa.

Report Supplied By Auction
Wednesday, March 19, 2003

Hay—Straw—Grain
AI FAI FA HAY 145.00-205.00
MIXED HAY: 130.00-187.50
STRAW 90.00-107.50

Robert Fulton Fire Co. Hay Market

Wakefield, Pa.

Report Supplied By Auction
Thursday, March 20, 2003

22 LOADS.
ALFALFA 1ST CUTTING 145.00-187.00, 2ND 165.00-180.00, 3RD 192.00-201.00
ORCHARDGRASS, 168.00-190.00
MIXED GRASS HAY 130.00-185.00
STRAW 102.00-127.00
SALF EVERY THURS, 10 A.M

Livestock Cooperative Auction Market Of North Jersey

Hackettstown, N.J.

Report Supplied by Auction
Wednesday, March 18, 2003

Hay—Straw—Grain
68 LOTS TOTAL.
ALFALFA: 16 LOTS, 2.50-5.30 BALE
MIXED HAY: 34 LOTS, 1.80-4.50 BALE.
TIMOTHY: 1 LOT AT 3.00 BALE.
GRASS: 8 LOTS, 2.25-3.50 BALE.
WHEAT STRAW: 2 LOTS, 2.00 AND 2.20 BALE.

RYE STRAW: 4 LOTS, 1.90-2.40 BALE.
EAR CORN: 2.50 BALE.
SHELLED CORN: 4.50.
OATS: 5.25 BU.

Morrison's Cove Livestock Hay

Martinsburg, Pa.

Report Supplied By Auction
Monday, March 17, 2003

Hay—Straw—Grain
AI ALFALFA 135.00-160.00
ALFALFA AND GRASS 150.00-207.50.
GRASS: 115.00-160.00.
TIMOTHY: 102.50-132.50.
MIXED HAY: 85.00-127.50.
ROUND BALES: 100.00-120.00
LARGE SQUARE BALES 110.00-122.50.
STRAW: 85.00-97.50.
WOOD: 45.00-67.50.
HAY AUCTIONS MONDAYS AT 12:30 P.M. CALL KEN DOWNS, 814-793-3723.

Highlights of the March Pennsylvania Forage and Grassland Conference are scheduled for the April 19 Pennsylvania Forage and Grassland Council's (PFGC's) *Foraging Around* newsletter. Included: PFGC award presentations, conference updates, and news and information.



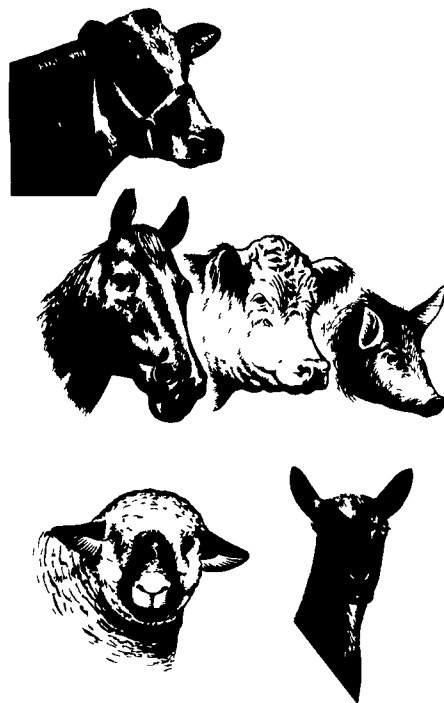
Supplying sound poultry nutrition.

Grand Valley Fortifiers, a leader in monogastric nutrition and Stoltzfus Feed & Supply announces availability for on farm manufactures of poultry feeds. Call us today to get more information on our Layer Power Pac and Broiler Pac Premixes.



80 Route 41 South
One mile South of 30
P.O. Box 427,
Gap, Pa 17527
(717) 442-8280 or 800-233-0331
www.stoltzfusfeed.com

Free Enterprise...

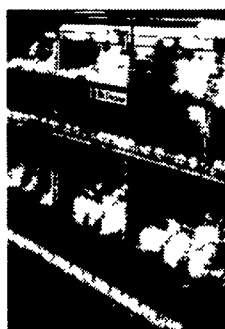


Two words that business people around the world take very seriously. Members of the Pennsylvania Livestock Auction Association take free enterprise very seriously too. They realize that producers have a choice when it comes time to buy and sell livestock and they are dedicated to making sure that producers can take advantage of the free enterprise system in the best way possible... at the local auction market. Pennsylvania livestock markets strive to provide you with the kind of service you deserve as a business person and a friend. You can be assured that the honesty, integrity and solid marketing fundamentals found at your local market will ensure nothing less than the true market value for your livestock.

PA LIVESTOCK AUCTION ASSOCIATION MEMBERS

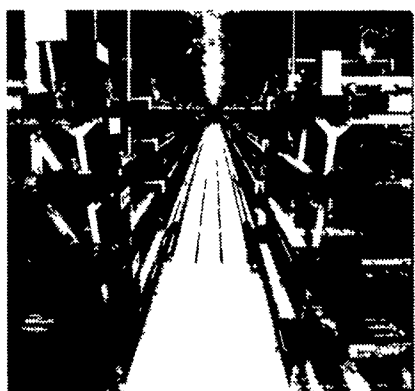
- Belleville Livestock Market, Inc.**
570-935-2146
Belleville
- New Holland Sales Stables, Inc.**
717-354-4341
New Holland
- Mercer Livestock Auction, Inc.**
412-662-2910
Mercer
- Dewart Livestock Market, Inc.**
570-538-9835
Dewart
- Pennsylvania Livestock Auction, Inc.**
412-627-9585
Waynesburg
- New Wilmington Livestock Auction, Inc.**
412-946-2921
New Wilmington
- Greencastle Livestock Market, Inc.**
717-597-2171
Greencastle
- Union City Livestock Auction**
814-438-3481
Union City
- Eighty-Four Auction Sales, Inc.**
412-222-9965
Eighty-Four
- Kling's Auctions**
717-789-3883
Landisburg, PA
- Valley Stockyards, Inc.**
570-888-9333
Athens
- Middleburg Auction Sales, Inc.**
570-837-2222
Middleburg
- Leesport Farmers Market, Inc.**
610-926-1307
Leesport
- Meadville Livestock Auction**
814-763-2240
Conneautville

Thinking of Upgrading?



Lurevent FU
the new cut off battery
for any fast low cost
upgrades

Let us show you how remodeling will increase your production



Stak Chick Eze Pullet Cages



Designers of Quality Systems for Poultry and Grain Handling
255 Plane Tree Drive, Lancaster, PA 17603
1-800-432-0988

Visit Our Web Site: www.hequip.com



Distributors of

The Dutchman