



Question Corner

(Continued from Page B8)

Pineapple Filling:

1 can crushed pineapple
¾ cup water plus 3 tablespoons cornstarch
½ cup sugar
1 egg yolk, beaten
 Combine cornstarch and sugar, add pineapple and water, cook until thick and clear. Add beaten yolk and mix well. Let cool before spread on dough.

ANSWER — Doris Myers, Hughesville, writes that her mother, who is 88 years old, lost her mother at a young age. She remembers her mother baking bread and reserving some of the liquid to bake a chocolate cake. Doris would like to surprise her mother by baking a cake like that if someone can send in the recipe. The cake was baked the same day as the bread. Thanks to Lee Laverty, Mount Joy, who writes that she doesn't know if this is the recipe Doris wants but it does call for yeast that would have been in the bread dough.

Chocolate Yeast Cake

1 cup shortening
2 cups sugar
3 eggs, separated
3 squares unsweetened chocolate
¼ cake yeast
½ cup lukewarm water
2¾ cups sifted cake flour
1 teaspoon salt
1 cup milk
3 tablespoons hot water combined with 1 teaspoon baking soda
1 teaspoon vanilla
 Cream shortening until smooth, add sugar gradually. Cream well. Add egg yolks and melted chocolate. Dissolve yeast in lukewarm water, add to creamed mixture and beat well. Sift together three times, flour and salt. Add alternately with milk and beat well. Add baking soda mixed with hot water. Add vanilla and beat until smooth. Fold in beaten egg whites. Pour batter into two 10-inch lined cake pans. Bake for 45 minutes in 350 degree oven.

ANSWER — Helen Ross, Coatesville, wanted the recipe for the starter to make Amish friendship bread. Thanks to E.L. Schreiter, Hamburg; Susan Hurley, Newville; Holly Lutz, and others for sending recipes. Although Helen had the recipe for the bread, some of our readers may not so that is also being printed.

E.L. Schreiter's Starter For Friendship Cake Or Bread

1 package yeast
¼ cup warm water
 In crock, dissolve yeast in water. Add:

1 cup milk or potato water
1 cup flour
¼ cup sugar
 Stir with wooden spoon until smooth. Cover with cheesecloth and set in warm place for two days. Feed it again with the same amounts of milk, flour, and sugar. Let stand two days. Then it is ready to use. Continue to feed it as follows every week or the starter will "die."

1 cup flour
1 cup milk
½ cup sugar
 Do not use same day as it is fed. Take out the amount needed to make a recipe before feeding. Never let dough starter to be reduced to less than one cup.

Amish Friendship Bread Starter And Bread

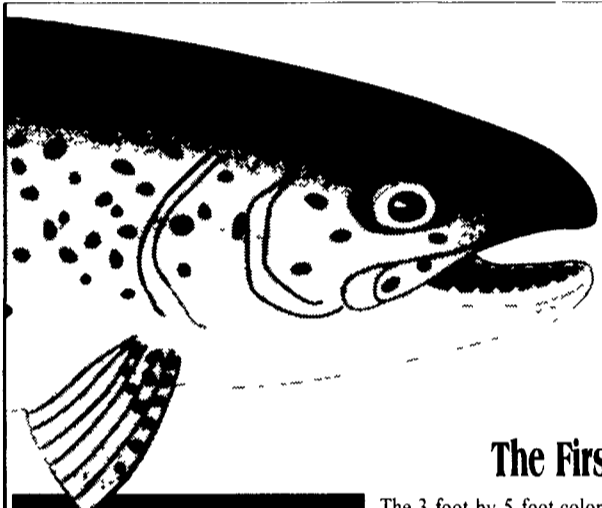
Starter:
1 tablespoons active dry yeast
2 cups warm water
1 cup flour
1 cup sugar
1 cup milk

For starter:
 Dissolve yeast in ½ cup warm water in a deep glass or plastic container. Stir in remaining warm water, flour, and sugar. Beat until smooth. Cover. (A large glass jar or bowl with a tight-fitting lid works best for this, but a ½-gallon zip baggie can also be used). Because the first batch of starter contains fresh yeast, you can skip the next set of directions and go directly to the instructions for splitting the starter.

Do not refrigerate. Do not stir with a metal spoon. The starter requires 10 days for fermentation.

- Day 1 — Begin the starter
- Day 2 — Stir with wooden spoon or squish in baggie
- Day 3 — Stir with wooden spoon or squish in baggie
- Day 4 — Stir with wooden spoon or squish in baggie

(Turn to Page B11)



Get Ready for Fishing Season!

Stream Maps

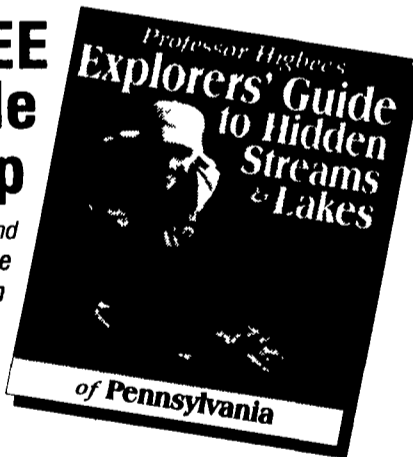
of Pennsylvania, New York
 New England, New Jersey, Ohio,
 & Maryland/Delaware

The First and Only Highly Detailed Map of Its Kind

The 3-foot-by-5-foot color map shows virtually all of the 45,000 miles of Pennsylvania streams plus lakes The 3 1/2-foot-by-4 1/2-foot color map shows virtually all of the 65,000 miles of New York streams plus lakes The 3-foot-by-4-foot color map shows virtually all of the 36,000 miles of New England streams plus lakes The 2 1/2-foot-by-3-foot color map shows virtually all of the 8,300 miles of New Jersey streams plus lakes The 3-foot-by-3-foot color map shows virtually all of the 29,000 miles of Ohio streams plus lakes The 2-foot-by-3 1/2-foot color map shows virtually all of the 12,000 miles of Maryland/Delaware streams plus lakes

FREE Explorers' Guide with Each Map

Pinpoint the best fishing in PA, NY, NE, NJ, OH and MD/DE with these valuable guides Easily locate streams and lakes shown on the Stream Map both alphabetically and geographically. Your map and guidebook will take you to the select fishing waters.



RAVE REVIEWS

"It is amazingly detailed and names some creeks in the Mohawk Valley that can't even be found on topographic maps"

—John Pitarres, OBSERVER-DISPATCH, Utica

"If you're looking for the most definitive maps ever created depicting every single creek, river, stream, pond and lake...then 'Professor Higbee's Stream Maps' are without question the finest"

—Howard Brant, THE NEWARK STAR-LEDGER

"It is in showing where to find out-of-the-way trout streams that makes the map such a treasure to the fisherman"

—Joe Gordon, TRIBUNE-DEMOCRAT, Johnstown

ORDER YOUR COLOR STREAM MAPS

Available rolled or folded ALSO AVAILABLE in heavy gauge LIFETIME GUARANTEED, glass-like clear-lamination, write-on wipe-off surface, with brass eyelets for easy hanging

PRICES INCLUDE PRIORITY MAIL

State	Map Size	ROLLED	FOLDED	LAMINATED
PA	3 FT by 5 FT	\$25 95	\$25 95	\$45 95
NY	3 5 FT by 4 5 FT	\$25 95	\$25 95	\$45 95
NE	3 FT by 4 FT	\$25 95	\$25 95	\$45 95
NJ	2 5 FT by 3 FT	\$25 95	\$25 95	\$45 95
OH	3 FT by 3 FT	\$25 95	\$25 95	\$45 95
MD/DE	2 FT by 3 5 FT	\$25 95	\$25 95	\$45 95

Check or money order enclosed \$

Each map includes the FREE Explorers' Guide to Hidden Streams & Lakes
 Each rolled and laminated map shipped in a sturdy storage tube

Name _____
 Address _____
 City _____ State _____ Zip _____

MAIL TO **LANCASTER FARMING**
 Dept. Map
 1 East Main St., P.O. Box 609, Ephrata, PA 17522
 Payable Check Enclosed Visa Mastercard Discover
 Card # _____
 Exp Date _____ Signature _____

LOST STREAM MAP

The STREAM MAP OF OHIO resembles another map—known to Pennsylvania anglers as the "Lost Stream Map"

The "Stream Map of Pennsylvania" was completed in 1965 after a 30 year effort by Howard Higbee, a former Penn State Professor.

Professor Higbee succeeded in creating a map of the highest detail possible. A map that shows every stream and lake He painstakingly plotted by hand, the location of 45,000 miles of streams onto a 3 by 5 foot map.

The map sold extremely well - until it was lost several years later. Incredibly, the printer entrusted with the original drawing and printing plates declared bankruptcy, then carelessly hauled Higbee's 30 years of work to the landfill

The few remaining dog-eared copies became a prized fisherman's possession Professor Higbee was offered \$400 for one of his last maps And state agencies were forced to keep their copies under lock and key.

The experts had always told Professor Higbee that reprints were impossible, because the maps were printed in non-photographic blue

Then, in 1991, at the age of 91, Howard Higbee's dream came true Computers made it possible to reprint the map Holding an updated map, Howard said, "I never thought I'd live to see this day"

Then, by combining Professor Higbee's knowledge with computer technology -- the STREAM MAP OF OHIO was created

GOT WOOD? WE HAVE THE FURNACE!

- All stainless steel construction
- Uses present central duct or Hydronic system
- Heats home/household hot water
- Shaker Grates

Hardy has been heating homes in N.Y. and PA. since 1982

100,000-250,000 btus

WILLIAMSON ENTERPRISES

601/656-2639
 877/606-3113



The Hardy
 *10 Year Warranty



All-Plant LIQUID PLANT FOOD

9-18-9 PLUS OTHERS!

- Contains 100% white ortho phosphoric acid. Made in USA.
- Non-corrosive. Won't settle.
- Top quality. Excellent service.
- Newest equipment
- Financially sound...and growing!

Big Demand Requires More Distributors!

- I sell to farmers. How do I become your distributor?
- I'm a farmer. What's the price?
- Where do I get it?

CALL or SEND FOR FACTS: Phone: 814-364-1349

ALL-PLANT LIQUID PLANT FOOD, INC.

821 State Rd. 511 N., RFD 3,
 Ashland, Ohio 44805