

## Penn State Ag Arena

# Scope Of Pa. Cattle Industry

STATE COLLEGE (Centre Co.) — There are about 12,000 different owners of beef cattle in Pennsylvania.

There are 175,000 beef cows of calving age, and about 250,000 cattle are on feed annually. There are two large beef packing plants in Pennsylvania; Taylor's Beef at Wyalusing (tenth largest beef packer in the U.S.) and MOPAC at Souderton eighth largest beef packer in the US). Because of these two large beef packers, there are over 1 million head of cattle (beef and dairy origin) har-

vested annually.

Pennsylvania's seedstock herds, just like the commercial herds, range in size from 15 head to over 200 head, and are dispersed around the state.

The main areas for cow-calf production are in the southwest part of the state, but the beef cow herd is the primary method of harvesting hill-land pasture in all sections of the state.

Cattle feeding is concentrated in the southeast part of the state, but practiced throughout southern and middle parts of the state.

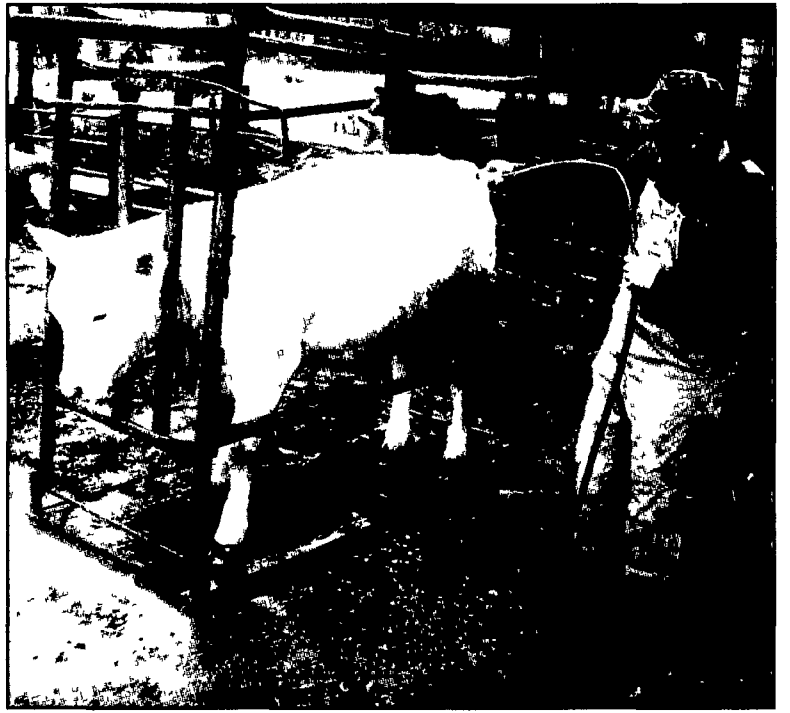
## Youth Prep For Expo

(Continued from Page A1)

showed the reserve champion.

The family, including father Dale Byers, keeps a total of about 30 Charolais and Angus cows. From May to October, the herd is transported to 150 acres of pasture land within the Gettysburg National Military Park.

In wintertime, the herd is housed and fed on the Byers's 18-acre home farm. The family also rents another 78 acres of farmland.



Derek Byers washes his yearling Charolais heifer in preparation for the Pennsylvania Beef Expo this week.

## PCA To Present Scholarships

STATE COLLEGE (Centre Co.) — The Pennsylvania Cattlemen's Association will present two additional scholarships this year to young persons who are planning a career in the cattle industry.

Pfizer Animal Health Company, Inc. provides funding for one

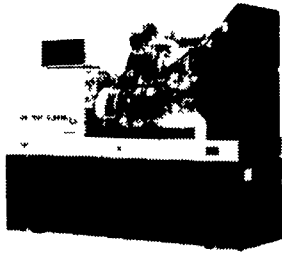
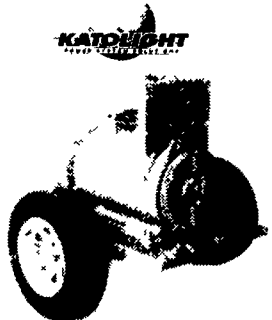
of the \$500 scholarships in connection with Pfizer's Dectomax Extra Education Dollars ('DEED') program. The Pennsylvania Cattlemen's Association provides the second \$500 schol-

arship from the PCA general fund.

Winners will be awarded scholarships at the annual Pennsylvania Cattlemen's Association Banquet on Thursday, March 28.

## Agricultural Generators

Detroit Deisel Spectrum



PTO Generators  
25 to 135 KW Units  
In Stock!

Automatic  
L P Gas, Diesel  
Natural Gas Generators  
5 to 2,000 KW

Service - Rental - New & Used Units In Stock!

# PENN POWER SYSTEMS

Power Generation Systems Specialists  
330 Founderwhite Road, Lebanon, PA 17042

Call Leonard Martin 717-273-4544  
Fax: 717-273-5186

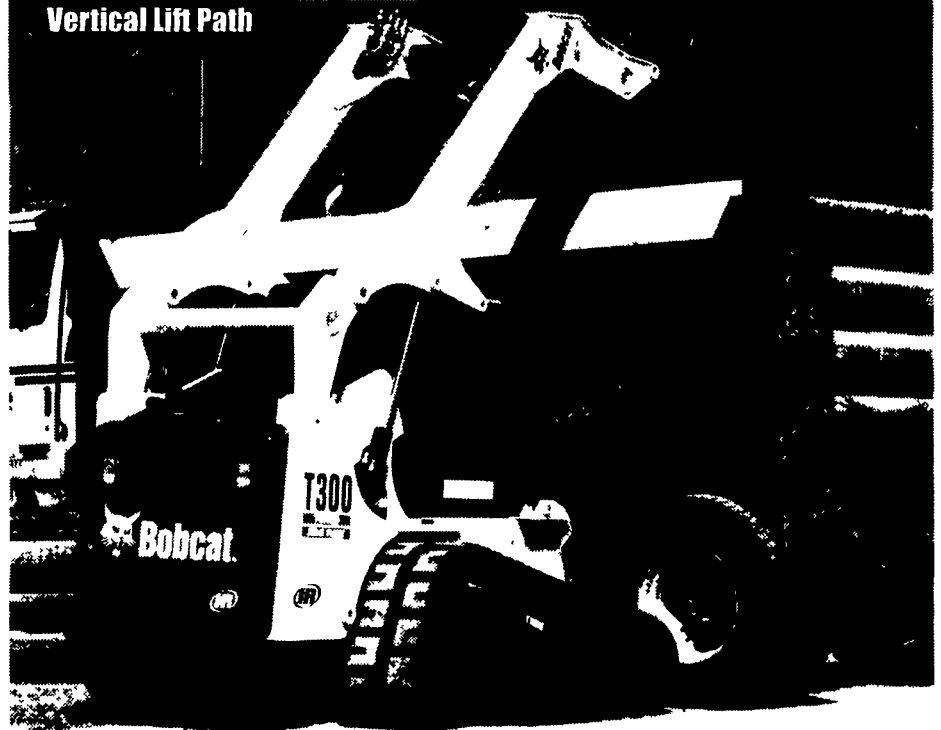
e-mail: lmartin@pennpowersystems.com

# Tough Tracks for Tough Tasks

New Bobcat T300 Compact Track Loader delivers superior traction and loads of lift!

3000 <sup>lb</sup>	126.4 <sup>in</sup>	81 <sup>hp</sup>	4.1 <sup>psi</sup>
Rated Operating Capacity	Lift Height	Turbo Charged Kubota Diesel Engine	Ground Pressure

### Vertical Lift Path



### Get in earlier, finish faster

Extend your working season with the powerful, versatile T300 compact track loader! Keep crews working even when the weather won't cooperate!

### Greater performance, comfort and value

Rugged rubber tracks give the T300 extra traction, greatly reduced ground pressure and low ground disturbance. Superior flotation, too, for working on soft, wet, or muddy ground where other machines stop dead!

### Power to spare

You get great pushing power, plus lots more for running attachments, including the Brushcat® rotary cutter, dozer blade, landscape rake, stump grinder, tiller and others.

### Vertical lift path

The T300's low-profile lift arms give the operator a great view to all four corners of the machine — and the vertical lift path delivers excellent reach and lift capacity for handling heavy loads!

See us for the full line of world-leading Bobcat equipment!

Best Line Leasing, Inc.  
Muncy, PA  
570-546-8422  
800-321-2378

Bobcat of Reading  
Reading, PA  
610-926-2441

BS & B Repair  
Mifflinburg, PA  
717-966-3756

Burchfields Inc.  
Martinsburg, PA  
814-793-2194

Clugston Ag & Turf Inc.  
Chambersburg, PA  
717-263-4103

Cumberland Bobcat  
Mechanicsburg PA  
717-790-9810

Grumelli's Farm Service  
Quarryville, PA  
717-786-7318

## Steel Reference & Data Guide

The Information You Need - Pounds Per Foot For . . .

- Flats
- Channels
- Angles
- Tees
- Beams
- Tubing
- Round Square
- Expanded Metal
- Pipe
- Sheet Plates
- Stainless Steel
- Aluminum

**Only \$16.96**  
plus \$2.50 shipping & handling

Mail Check or Money Order To:  
Omar Zook  
2867C Lincoln Hwy  
Ronks, PA 17572  
717-687-9567



www.bobcat.com

**Bobcat**  
One Tough Animal