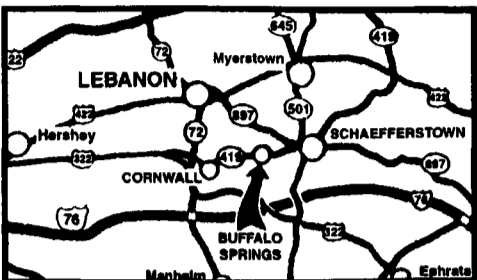


# KELLER BROS.

(Buffalo Springs) Lebanon, PA

717-949-2000 or 1-800-363-2767

LEBANON COUNTY'S HEAVY DUTY TRUCK HQTRS.



**FAMILY OWNED AND OPERATED FOR OVER 80 YEARS**

Over 100 Clean Pre-Owned Vehicles In Stock At All Times!!

**2002 FORD F350 4x4 SUPERCAB LARIAT**  
7.3 Diesel, 6-Spd., Leather  
Only 7,000 Miles  
**\$35,995**



**2001 DODGE RAM 1500**  
Quad Cab, 4x4, SLT, V8, AT, A/C  
**\$23,995**



**2003 100 ANNIV. F150 SUPER CREW**  
Harley Davidson Edition  
2 Tone Leather, 20" Rims, Super Charged



**1993 CHEV. K3500 CREW CAB DUALY**  
4x4, 7.4 L. V8, AT, A/C, PW, PL, Silverado Pkg.  
**\$11,995**



**2001 FORD F250 SUPER CAB 4X4 LARIAT**  
7.3 Powerstroke Diesel, 6-Spd., Full Power  
**\$29,995**



**2001 FORD RANGER Super Cab XLT 4x4**  
V6, AT, Flare Side  
**\$16,995**



**2002 FORD ESCAPE XLT 4x4**  
V6, AT, A/C, PW, PL, 6 Disc CD  
**\$20,504**



**2003 FORD SUPER DUTYS IN STOCK NOW**  
Gas & Diesel, 4WD & 2WD, Crew Cab, Super Cab, Reg. Cab, Chassis Cab



**1998 MAZDA B3000**  
V6, 5-Spd., A/C, 4x4, Very Clean  
**\$9,895**



**2002 FORD F150 SUPER CREW 4x4**  
5.4 V8, AT, A/C, PW, PL, Off Road Pkg.  
**\$26,800**



**1998 FORD EXPEDITION 4X4 EDDIE BAUER**  
V8, A/C, Full Power  
**\$15,795**



**2003 FORD EXCURSION LTD**  
Diesel, Quad-Buckets, Leather, Only 1,600 Miles.  
List Over **Now Only**  
\$47,000 **\$39,987**



**1989 FORD F350 CREW CAB DUALY**  
Cabriolet Conversion, V8, AT, A/C, Only 70,000 Miles  
**\$10,595**



**2001 FORD F150 SUPER CREW KING RANCH EDITION**  
Local Trade 1 Owner  
**\$23,665**



**1997 FORD F150 SUPER CAB 4X4 XLT**  
4.6 V8, AT, A/C, PW, PL  
**\$15,534**



**2000 FORD F150 Reg. Cab, 4x4**  
4.6 V8, XLT, AT, PW, PL, 1-Owner  
**\$16,996**



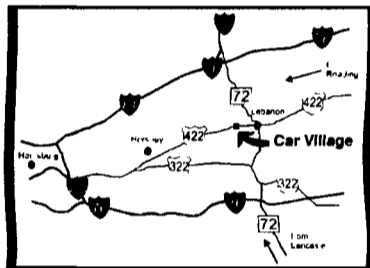
Nicest Trucks In the East • Nicest Trucks In the East • Nicest Trucks In the East • Nicest Trucks In the East • Nicest Trucks In the East • Nicest Trucks In the East

**Business Hours:**  
Mon.-Fri. 9 to 9;  
Sat. 9-4

2300 W. CUMBERLAND ST. (Rt. 422)  
LEBANON, PA 17042  
(Across From Lebanon Valley Mall)

## CAR VILLAGE

1-800-650-1420  
717-274-2000



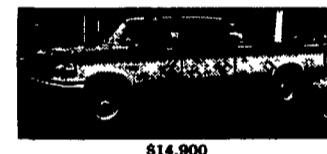
**HEAVY CHEVY • 2000 CHEVY K3500 CREW DUALY, 4 WHEEL DRIVE**  
Hey Chevy Guys This Is The One Only 28,000 Miles. High Output, 6.5 Turbo Diesel, Auto, All Power Options, Swing Out Mirrors & More



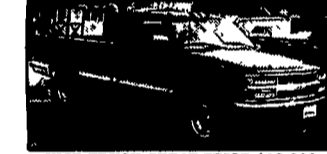
**BIG REDNECK 97 FORD F250 SUPER CAB 4x4**  
Powerstroke Diesel, 5 Sp., Custom Exhaust, Oversize Wheels & Tires



**\$10,900 97 DODGE 2500 4X4**  
Fuel Inj 360 V8 Auto, A/C, Heavy Duty 3/4 Ton Chassis, Vinyl Floor, Alloy Wheels. Very Solid Truck



**\$14,900 95 FORD F-250 SUPER CAB 4X4**  
Very Clean. Loaded XLT, 40/20/40 Seat, Powerstroke Turbo Diesel, Auto, A/C, Alloy Wheels



**NICE TRUCK GREAT PRICE \$18,900 99 CHEVY K2500 4x4**  
Heavy Duty X-Ton High Output Turbo Diesel Auto, A/C, Loaded LS Pkg. 48,000 Miles, Remaining Chevy Warranty



**GREAT TON MACHINE 99 DODGE 3500 QUAD CAB DUALY 4x4**  
Very strong, 24 Valve Cummins Turbo Diesel, 5 spd, A/C, Tow Pkg., Chrome Simulators, Real Sharp



**1 Ton 4 Door 2002 FORD F350 4 Door 4 Wheel Drive.**  
Very nice XLT, only 7,000 miles, Powerstroke Turbo Diesel, Auto, A/C, Loader XLT Alloy Wheels Heavy 9900 GVW



**PERFECT • ONLY 15,000 MILES. 2000 FORD F250 SUPERCAB 4X4.** Be Sure To Check This One, Powerstroke Auto, A/C, Loaded XLT, Alloy Wheels, Tow Pkg., Needs Nothing, Except for you!



**SUPER CLEAN 00 FORD F250 SUPER CAB 4x4**  
Loaded XLT, Powerstroke Turbo Diesel, Auto, A/C, 40/20/40 Seat, Run Boards, Alloy Wheels, Ford Warranty, A Must See.



**CUMMINS TURBO DIESEL 95 DODGE 2500 4X4**  
Diesel Power, Auto, A/C, Trailer Tow Pkg, Alloy Wheels, \$16,900



**SHORTBED 4 DOOR 99 FORD F250 4x4**  
39,000 Actual Miles, Very Clean, XLT Lariat Powerstroke Turbo Diesel, Auto, A/C, Tow Pkg., Alloy Wheels, A Real Good Looker



**21,000 MILES 2001 FORD F350 4 DOOR CREW CAB 4x4**  
A Beauty, Loaded XLT, Powerstroke Diesel, AT, Alloy Wheels, Remaining Ford Warranty



**NOT FANCY, JUST TRUCK 2000 FORD F250 SUPERCAB 4X4.** Great Truck Powerstroke Turbo Diesel, 6 Sp., A/C, Vinyl Seat & Floor, Tow Pkg., Runs Strong, Only \$21,900



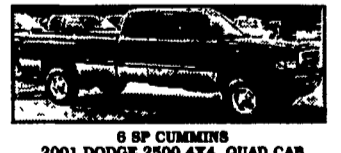
**Gas 4 Door 2000 CHEVY F250 4 WHEEL DRIVE**  
Nice Clean Truck, 350 Vortec V8, Auto, A/C, Loaded Silverado Pkg, Tow Pkg. You and Your family will like this one.



**Only 32,000 Miles 99 FORD F250 SUPERCAB 4X4**  
Shortbed XL Pkg, Vinyl Seat & Floor, Powerstroke Turbo Diesel, Auto, AC, Very Clean, \$23,900



**GBP POWERSTROKE 99 FORD F250 SUPERCAB 4x4**  
8 Foot Bed, Fact. Tow Pkg., Capt. Chairs, Console, Limited Ship Axle, 53,000 Actual Miles



**6 SP CUMMINS 2001 DODGE 2500 4X4, QUAD CAB**  
Gorgeous, Only 19,000 Miles, High Output 24 Valve Cummins Turbo Diesel, 8 Sp., Loaded Laramie SLT, Two Tone Paint, Trailer Tow Pkg., Alloy Wheels



**WHY BUY NEW SAVE \$\$\$ 2003 Dodge Ram 3500 HD**  
Like new only 5,700 miles 24 valve Cummins Turbo Diesel, Auto, A/C, Power Drive, CD Player, Alloy wheels



**POWERFUL POWERSTROKE 2000 FORD F350 CREW CAB DUALY 4x4**  
Only 25,000 Miles, Powerstroke Diesel, Auto, A/C, Leather Seats, Alloy Wheels, Nice To Look At And Even Nicer To Drive.



**\$22,900 • LOADED XLT 99 FORD F250 SUPERCAB 4X4** Powerstroke Turbo Diesel, Auto Comfortable 40/20/40 Seat, Tow Pkg., 80,000 Miles

### FLATBEDS, WORK & DUMP TRUCKS



**650 CREW CAB 2000 FORD F350**  
For the Big Jobs Powerstroke Diesel 6 Sp., A/C, 26,000 GVW, Waiting For Your Body



**Mechanics Body 2000 FORD F350**  
Nice Clean, everything works, Powerstroke Turbo Diesel, 6 Sp., A/C, Reading Body \$19,900



**4x4 FLATBED • 2000 FORD F350**  
Ready & Waiting for You, Powerstroke Turbo Diesel, 6 Sp., A/C, Sht. 137 WB. 84" C.A. Ford Warranty



**DUMPING-MECHANICS BODY 98 GMC HA 3500**  
A Nice One, Only 84,000 Miles, High Output 6.5 Turbo Diesel Auto A/C, Tow Pkg., Lots Of Truck, Only \$19,900



**L-PAK DUMP 95 DODGE 3500**  
Cummins Turbo Diesel, AT, A/C, only 39,000 Miles, Tow Pkg Limited Ship Axle, \$18,900



**DIESEL MOBILE WORKSTATION 99 FORD F350 HI-TOP CARGO VAN**  
AT, A/C & Roof A/C, Cabinets, Countertop, Electric Outlets, Lights, Generator and More \$17,900



**2002 4 WHEEL DRIVE FORD 550 SUPER DUTY**  
Like New Only 18,000 Miles, Powerstroke Turbo Diesel, AT, A/C, 10 Foot Dump Body, Pentil Hitch, Tool Boxes.



**ONLY 800 MILES 2002 FORD F350**  
4 Door Chassis, Powerstroke Diesel, 6 Spd, Manual Trans., A/C, Vinyl Floor & Seats, Single Rear Wheel, Ford Warranty.



**CREW CAB DUMP TR. • 2000 FORD 450**  
Very Nice, Only 10,000 Miles, Powerstroke Turbo Diesel, Auto, A/C, Alloy Wheels, 3 Yd Dump Body



**22 FOOT BOX, REAR LIFTGATE 2000 CHEVY KODIAK**  
Under CDL, 25,900 GVW, 3128 Cat Diesel, Allison Auto, A/C, Side Door.

Nicest Trucks In the East • Nicest Trucks In the East • Nicest Trucks In the East • Nicest Trucks In the East • Nicest Trucks In the East • Nicest Trucks In the East