

BRUBAKER'S AUTO SALES

PH. 717-866-5237

Hours: Mon.-Fri. 8 a.m. - 9 p.m.; Sat. 8 a.m. - 6 p.m.

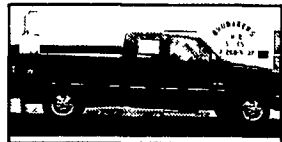
ROUTE 422
MYERSTOWN, PA



99 Ford Windstar LX, Maroon, 3.8 V6, AT AM/FM/CAS PW, PL, CC, Tilt, Dual-AC, Pwr-Seat, 43,055 Mi **\$10,900**



99 Ford Expedition XLT, 4x4, 8/Pass, Spruce 4.6 V8, AT, AM/FM/CAS, PW, PL, CC, Tilt, Dual-AC, Pwr-Seat, Keyless-Entry, 61,700 Mi. **\$16,900**



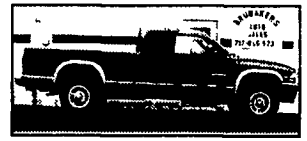
99 Chevy Silverado 1500 LS, 4x4, Z-71, Ext-Cab, Black, 5.3 V6, AT, AC, PW, PL, CC, Tilt AM/FM/CD, Keyless-Entry, 33,645 Mi **\$18,600**



99 Dodge Durango SLT, 4x4 7/Pass, White, 5.2 V8 AT, PW, PL, CC, Dual-AC Pwr-Seat, Leather, AM/FM/CASS/CD, Keyless, 65,675 Mi **\$13,900**



99 Mercedes ML320, AWD, Maroon, 3.2 V6, AT AM/FM/CAS AC PW, PL, CC Pwr-Seats, Pwr-Sunroof, Heated-Seats, Leather, Keyless, 67,865 Mi **\$19,800**



97 Dodge Dakota SLT, 4x4, Ext-Cab, Red/Gray, 5.2 V8, AT, AM/FM/CAS, AC, PW, PL, CC Tilt, Keyless-Entry, 50,085 Mi **\$12,900**



02 Chevy Astro LS, AWD, 8/Pass Pewter, 4.3 V6, AT, PW, PL, CC Tilt Dual-AC&Heat, Pwr-Seat AM/FM/CD, 19,925 Mi **\$17,600**



01 Mercury Mountaineer, 4x4, Monterey, Black/Tan, SOHC, V6, AT, AC, PW, PL, CC, Pwr-Sunroof, CASS&CD, CD-Changer, Leather Keyless, 57,085 Mi **\$14,900**



72 Ford 500 w/12 Stake body dump 330 cu engine, 88,000 mi? New rubber **\$3,800/obo**
30x80 Storm King Green house, 2 exhaust fans, 2 vents, 2 gas heaters, 24 pressure treated beds, plus more **\$3,000/obo**
Will help disassemble

717-545-1242 8am to 4pm Harrisburg, PA

1994 Ford F150 4x4 302 V-8, Auto, AC, PW&L AM-FM Cassette, Cruise **\$7,995**



1994 Toyota Ex Cab 4x4 4 Cyl 5 Speed, 97,000 Miles

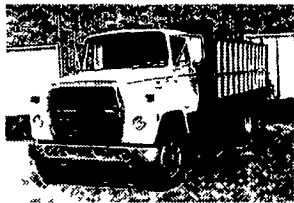
1973 International 1700 5 Speed 392 V-8 All Wheel Drive **\$4,995**



AL HAMILTON USED TRUCK SALES

P.O. Box 157, 55 Doe Run Road, Manheim, PA 17545
Phone: 717-665-7145 Fax: 717-665-2137

SPRING SALE



1986 Ford LN 8000 16' Flat Dump, 3208 Cat 210 HP, 5 Spd Trans, 2 Spd Rear, Custom Cab, GVW 33,000 **\$15,500**



1997 INT 4900 NEW 10' DUMP, DT 466E, 195 Hp, 5 Spd Trans, Hyd Brakes, A/C, GVW 26,000, **\$23,500**



'93 FORD Superduty, New 14' Dump, 7.5L Gas, 5 Spd Trans, Full Power, A/C, GVW 15,000, 28,000 Miles, Exc Cond. **\$19,500**



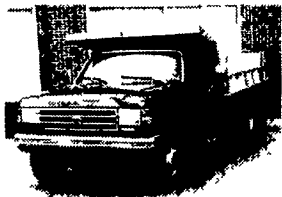
USED VAN BODIES
Call for size & price
Overstocked Special Prices



1973 Mack RD 14' Dump, 237 Mack T107 Trans, Pintle Hook & Air Lines, Just Off the Job **\$12,500**



1985 Mack R T.T., 5 Spd Trans, Wet Line, Pintle Hook, A/C, Excellent Cond **\$14,500**



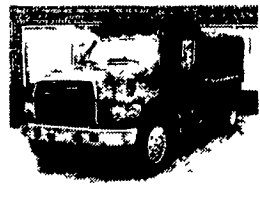
1990 FORD F-450 12' Dump, 5 Spd, GVW 15,000 **\$14,500**



'74 MACK RD685S, 16' ALUM DUMP ENDT, 675 - 237 HP, 6 Spd Trans, 18 Front Axle, 44 Rear Axle Eng Brake **\$12,500**



'84 INT 2300, 10' Dump, L-10 Cummins 300 HP 7 Spd Trans, Air Brakes, A/C, P/S GVW 35,000 **\$16,500**



1997 FORD F8000 10' DUMP, Pintle Hook & Air Lines 8.3 Cummins, 225 Hp, 5 Spd Trans, 2 Spd Rear, Custom Cab, A/C Low Miles, Like New, **\$29,500**



97 FORD F-8000 New 10' Dump 5.9 Cummins 190 HP 6 Spd Trans Hyd Brakes Non CDL GVW 26,000 **\$24,500**



'70 FORD LN900 10' Dump 477 Gas 5 Spd Trans 2 Spd Rear GVW 33,000 **\$6,500**



2) 1997 Ford LN8000 New 10' Dumps Cummins 210 HP 5 Spd Trans Custom Cab A/C P/W 35,000 **\$29,500**

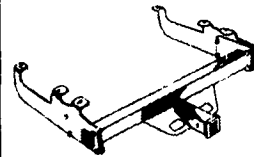


1988 Ford LN8000 10' Dump 7.3L Diesel 210 HP 5 Spd Trans 2 Spd Rear Custom Cab Pintle Hook & Air Lines GVW 35,000 Excellent Cond **\$17,500**

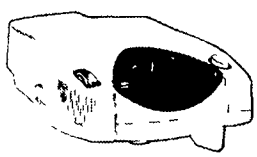
STROBECK'S AUTO SALES
262 W. George St. York, PA **717-244-4282**

Weaver Distributing Warehouse Direct To Your Door!

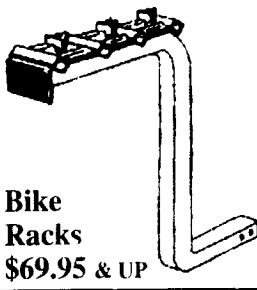
Trailer Hitches Class 1 thru 5



Brake Controls \$49 - \$125



Pintle Hooks and Accessories

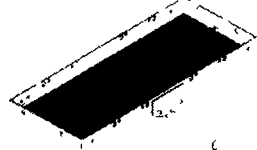


Bike Racks \$69.95 & UP

Triple Tow Mounts Black or Chrome balls



Cargo Carriers \$56-\$95



Quic Goose Gooseneck Hitch \$299



Adjustable Ballmounts \$39.95 & up



Free shipping for most orders

Call For a Free Catalog
1-800-932-8373
1-800-WEAVER-D



Weaver Distributing
125 Blue Mountain Road
Fredericksburg PA 17026

