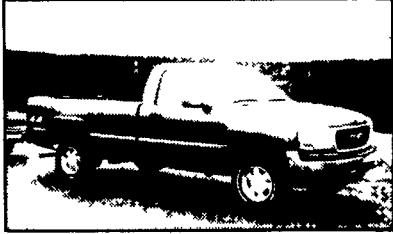
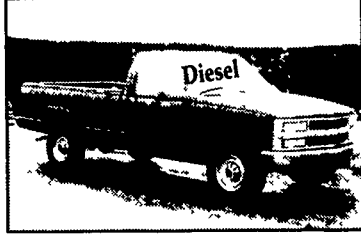


35

TRUCKS AND TRAILERS



2000 GMC SL 1500 4x4, 4.8 V/8, Auto, PS, PB, PL, Cruise, Tilt, Arr. AM/FM Cass., 71,000 One-Owner Miles, Charcoal
\$11,900



1998 CHEVY CHEYENNE 3500, 2WD, 6.5 Turbo Diesel, Auto, PS, PB, Air, AM/FM, 9000 GVW, 49,000 One-Owner Miles, Dark Blue
\$10,900

A & J AUTO SALES

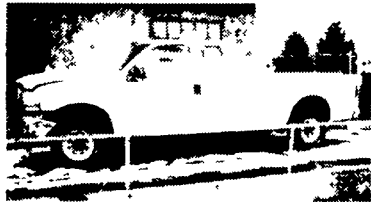
798 E. Main St., Rt. 322 East, Ephrata, PA 17522
717-733-2873

THOMPSON MOTORS INC.

Main Street & 412, Springtown, PA 610/346-8588
 5 Miles East of Route 78 (Exit 69)

9-9 Daily 9-8 Saturday

REPAIRABLE TRUCKS



2000 F250 X/CAB 4x4 Diesel Auto NDS Partial Front End
\$9,900



2002 CHEV 3500 DUALY X/CAB LT 4x4, 15K, Right Side Damage Drives Fine
\$21,500



2002 FORD F450 LANDSCAPE DUMP (12 ft) Diesel, Auto, Front Damage 10K,
\$20,500



99 FORD 550 W/READING 14 Ft Utility Body, Diesel 6 spd., XLT, Front damage
\$12,500

Others In Stock '95 Dodge 2500 4x4, Cummins, **\$6,900**
 '00 Ford X/Cab Dually 4x4 Diesel **\$9,900**
 '01 Ford F250 Crew 4x4 5.4 **\$15,900**
 '99 Ford F250 X/Cab 4x4 Diesel **\$10,900**

Call 888/755-1041 for our 'Fax on Demand' Inventory List.
 We have new trucks coming in weekly. 150 Units in stock



1989 Mack American LaFrance 1500 GPM Pumper Truck
 Auto Trans, Mack Diesel, Good Cond., Will Refurbish to your Specs.
\$25,000

Curry Supply Co.
 Curryville, PA
814-329-2783



1984 Ford F800, 19' Bed, 370 Gas, 5 Speed, Good Rubber, Inspected, 23,000 GVW, Non CDL,
\$4,000

717-367-4970
Becker Farms



131 Kline Rd., Bethel, PA 19507
 We're Located Right On I78 @ Exit 17

WE BUY TRUCKS

717-933-9792

Fax 933-9782 www.besttrucks.net



1999 Mitsubishi FE, 14 Van 175 hp Diesel Auto 147K Miles AC 11600 GVW White
\$11,500 NL000397



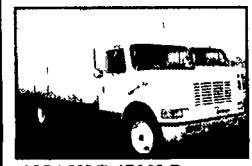
1994 International 4700, 24 Van DT408 190 hp (Eng. Work Completed) 5 Spd 29000 GVW Air Brakes White, Spoke Wheels
\$8,500 RH598196



1998 KW W900B Tandem Daycab, Cummins N14 370/430 10C Transmission 450K miles 10C Rear 10 Alum Wheels 250 Wheel Base Tilt/Tele 3.90 Ratio Full Gauges VIT Interior 10 New Tires
\$31,200 WR776770



1994 KW T600 Tandem Day Cab, Cat 3406C 350 HP 9 Spd 620K Miles 4 11 Rears 2 Alum Steers Red
\$14,900 R1633635



1996 IHC 4700LP, 18 Van T444 175hp 5 Spd 198K Miles 25000 GVW hydraulic brakes • \$9,750
 TH386270



1998 Freightliner F1 D Single Axle Sleeper, 48 Condo Detroit 60 series 350 hp 9 speed air r/d, double bunk 3.90 ratio Tilt/tele whcl 210 whcl base 546K/553K Miles
\$15,750 WL 885803



1994 IHC 4700LP 14' Cold Plate, DT408 190hp (Jasper R. Min) 6 speed 302K miles AC 25500 GVW Hydraulic brakes White & Green
\$11,500 RH590140



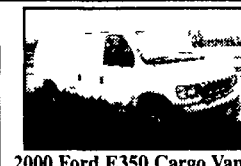
1998 Volvo VNL610, 12.7 430/470 HP 10 Speed 605K Miles 10 Steel Wheels Single Bunk White Wheel to Wheel Lease Maintained
\$25,500 WN760894



12 Bay Beverage Trucks, 1989 Ford LN8000 7.8 215 HP Automatic 32,000 GVW Air Brake White 118K Miles Mickey Bodies
\$6,500 EACH KVA 36836



1996 Ford LN8000 20' Van, Cummins 8 3 210, 6 Speed, 200K Miles White, AC 6 Speed 1 Driver Truck,
\$10,500 TVA21914



2000 Ford E350 Cargo Van, 4.2L Gas Automatic AC Rear Htr & AC 72000# GVW white 140K miles Clean!
\$9,000 VHA15890



1998 Kenworth W900L, 72 AeroCab Detroit 12.7 500hp 18 Speed 3 55 Eaton Rears Approx 260 Wheel Bases Dual Htr Back Seats VIT Interior Dual Polished Fuel Tanks 2 Alum Wheels Red
\$39,900 WR768120



1994 LT9000 26' C&C, 8 3-225 HP Auto 167K Miles 46000# GVW Air Brakes, AC Air Ride 75R22.5
\$19,000 RVA46650



1998 Pete 379 EXH, 63' Raised Root Ultracab N14 525hp 13 Speed American Class 526K Miles 10 Alum Wheels Dark Metallic Blue
\$48,000 D472991



1995 Volvo WG64T, Tandem Daycab VED12 335HP 9 Speed, 380K Miles Air Ride 3 08 Rears, 170 Wheel Base, Air Slide 5th Wheel Blue
\$11,500 SR835904



3 1996 IHC 9200 M11 Pro Sleepers, Cummins M11 330E, 9 Speed, 1 Million Miles, Jake Brake, 2 Alum Wheels, Air Ride, White \$8,500
 TC014804



1995 FTL FLS1264ST, 48 Flat Top Sleeper, Cummins N14 350HP, 9 Speed Black, 580K Miles, Air Ride Jake Brake Lease Maintained
\$11,500 SH767487



1998 Pete 379 119" hood, 63" Unibilt Ultracab Sleeper, Detroit 12.7 430/470 Hp., 0 Speed, 3 90 Rear Ratio, 628K Miles, Virgin Tires, 10 Aluminum Wheels, Tilt/Tele, Accent Interior, Jake Brake, Black • \$27,900
 WN448801



(2) 1995 IHC 8200 Single Axle Day Cabs, Cummins M11 280hp, 9 Speed, 7 800K Miles, Spring Suspension, AC, PS, Prices Starting At \$8,750
 SH663851



1995 4900 10 Dump, DT466-175 HP, 5 Spd., 212K Miles UNDER CDL, Hydraulic Brakes, New Tires
\$18,500 SH223798



1993 Isuzu Sprayer Truck, DSL, Automatic, 50K Miles, 14250 GVW, White, Will Separate body,
\$9,200 P7011226



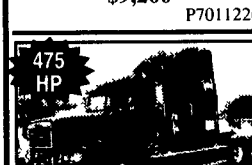
1990 IHC 8300 Tandem Day Cab, Cummins NTC 315, 9 Speed, 299K Miles, Spring Suspension, White, Not Inspected, Runs Great!
\$4,900 LH223704



1993 Mack CL613 Tandem Sleeper, MACK Elite E9 V8, 500 HP, MACK 18 Speed, MACK Rears, Air Ride, 550K Miles, Black, 10 Alum Wheels, Virgin Tires,
\$21,500 PW001158



1993 IHC 8200 Tandem Day Cab, Cummins N14-350, 9 Speed, 300K Miles, Air Ride, White • \$7,900
 PH514869



1998 FTL FLD12064ST 70" Double bunk, CAT 3406 475 HP 13 Spd 900K Miles Air Ride 2 Alum Wheels
\$16,000 WA59588U



(2) Storage Trailers: Both Are 1980's Dorsey 42 Long 96" Wide Spring Suspension Swing Doors
\$1,400 Ea. SH025917



1995 8100 Modular Home Toter Cummins M11 350hp 9 Speed Jake Brake 144 Wheel Base Air Ride 700K Miles White
\$12,500 SH216628



1998 IHC 4900 22' Flat Bed, DT466 195HP 6 Speed 120K Miles 25 500 GVW Hydraulic Brakes Yellow AC
\$17,900 020204

LEFEVER BROS. CHEVROLET GEO. CHEVY TRUCKS

YOUR DIRECT LINE TO GENUINE GM PARTS

1-800-533-3837

When you call the number listed above, you'll reach our wholesale parts specialists, who can help you keep your GM repair work moving quickly

Ask about

- Specializing in GM Medium Duty Trucks, Current and Obsolete.
- \$500,000 Parts Inventory.
- Parts Locator for Those Hard to Find Items.
- We Ship Anywhere, Local Delivery Available.
- Experienced, Knowledgeable Personnel.

Mon., Tues., Thurs., Fri.
 7 30 a.m. - 4 30 p.m.
 Weds. 7 30 a.m. - 8 30 p.m.
 Major Credit Cards Accepted

717-432-9697

Quality Dealer Since 1921

406 U.S. Rt 15 Dillsburg, PA 17019

GM Parts THE FEELING IS GENUINE



"Bid on our trucks at:" www.truck-network.com