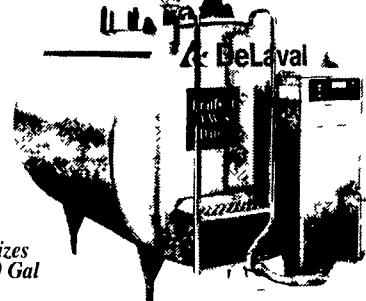


**OUR SPECIALTY IS  
SALES AND SERVICE OF  
NEW & USED BULK MILK TANKS**

**DeLaval**

Featuring  
the DeLaval  
Century  
DXC



Available in Sizes  
From 800-8,000 Gal

**We Will Service Any Make Bulk Tank**

**H.W. MARTIN REFRIGERATION SERVICE**  
501 E. Woods Dr. Lititz, PA 17543  
Phone: (717) 626-6355 Fax: (717) 626-2713

**DeLaval**

BLUE DIAMOND  
MANUFACTURING CO.

**Universal Germania**

Serving Southeast PA,  
Northeast MD, and Eastern  
Shore area with quality milking  
equipment, 24-hour service  
and dairy supply routes

**JB Zimmerman & Sons**  
Since 1931

DAIRY EQUIPMENT DIVISION  
P.O. Box 337 Blue Ball, PA 17506  
East Of New Holland On Rt. 23  
**CALL (717) 354-8030**

**ARE YOUR COWS HAVING FOOT PROBLEMS?**

**New Cross Grooved Pattern  
Heavy Grooved 3/4" Thick Rubber  
Flooring for Those Heavily  
Traveled Areas.**

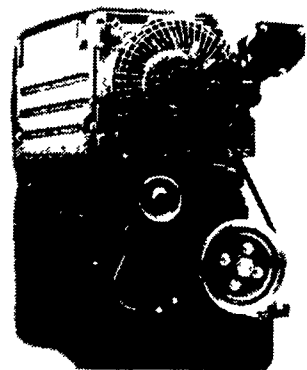
4', 5', & 6' wide up to 500' lengths  
Placed over concrete to prevent  
cows foot problems.  
(Horse mats cut to fit stalls)



**Gabel Belting, Inc.**

Route 16, Olean Road  
Chaffee, N.Y. 14030  
Phone Collect 716-496-6025

**New  
Cross Groove  
Pattern Available**



**Quieter, Smoother,  
Smaller, Simpler.**

Now there's a premium engine  
without the premium price.  
Contact us for details on what  
makes the Ten-Elevens  
quieter, smoother,  
smaller, simpler.



(1) F3L1011F, 31 hp @ 1800 RPM  
**\$3,850**

TS2, Lister Rebuilt  
6D16T Mitsubishi 180hp.  
**Call for pricing**

**RUFUS BRUBAKER REFRIGERATION & POWER**  
76 Pumping Station Rd Quarryville Pa 17566  
**717-786-1617**  
24 Hr. Emergency Service Available

Lancaster County's Authorized Deutz Dealer and Authorized Deutz Warranty Center

**ATTENTION DAIRY FARMERS**  
We Need Good Used Tanks  
100-6,000 Gal. - Call Us

- |                                  |                                    |   |
|----------------------------------|------------------------------------|---|
| • 180 Gal DeLaval                | • 800 Gal Majonnier                | • 2000 Gal Mueller OE (Late Model)        |
| • 200 Gal Mueller M              | • 800 Gal Mueller OH               | • 2000 Gal DeLaval                        |
| • 230 Gal DeLaval Self Contained | • 800 Gal DeLaval                  | • 2000 Gal Storage                        |
| • 300 Gal DeLaval                | • 900 Gal <b>SOLD PA</b>           | • 2500 Gal Storage                        |
| • 400 Gal Mueller                | • 1000 Gal Mueller OH (Late Model) | • 2700 Gal Mueller OE (Late Model)        |
| • 400 Gal Girton D4              | • (3) 1000 Gal Mueller OH          | • 3000 Gal Dankool                        |
| • (3) 400 Gal Storage            | • 1000 Gal Mueller O               | • 3000 Gal Girton D5                      |
| • 415 Gal Sunset                 | • 1000 Gal Surge                   | • 3000 Gal Surge                          |
| • (3) 500 Gal Girton             | • 1000 Gal Girton D5               | • 3000 <b>SOLD</b> (Late Model)           |
| • 500 Gal Mueller O              | • (3) 1000 Gal Storage             | • 3000 Gal Mueller OH (Late Model (Nice)) |
| • (3) 500 Gal Storage            | • 1250 Gal Majonnier               | • 3000 Gal Storage                        |
| • 600 Gal Majonnier              | • 1250 Gal Girton D5               | • 4000 Gal Mueller OH                     |
| • 600 Gal Mueller OH             | • 1250 Gal DeLaval                 | • 4000 Gal Storage                        |
| • 600 Gal Girton D4              | • 1250 Gal Storage                 | • 5000 Gal Mueller O                      |
| • 600 Gal Storage                | • 1500 Gal Girton D4               | • 5000 Gal Dankool (Late Model)           |
| • 625 Gal Sunset                 | • 1500 Gal Girton D5               | • 6000 Gal Mueller OH                     |
| • 625 Gal Girton D5              | • 1500 Gal Zero                    | • 6000 Gal Milk or Storage                |
| • 700 Gal Mueller M              | • 1500 Gal Dankool                 |   |
| • 700 Gal Storage                | • 1500 Gal Sunset                  |   |
| • 735 Gal Sunset                 | • 1500 Gal Surge                   |   |
| • 800 Gal Girton D5              | • 1500 Gal Mueller OH              |   |
| • 800 Gal Surge                  | • 1500 Gal Mueller OHF             |   |
|                                  | • (3) 1500 Gal Storage             |   |
|                                  | • 1500 Gal Storage                 |   |

**HEAT EXCHANGERS**

- Therma Stor 80 • Therma Stor 100
- Mueller Fre Heater 105 Gal.
- Therma Stor III, 120 Gal • Mueller Fre Heater 50 Gal
- 300-6000 Gal Storage Tanks

Installation Sales & Service

**RAY SHENK**

Visit us at [www.rayshenk.com](http://www.rayshenk.com) - click on "Special"  
505 E. Woods Drive Lititz, PA 17543  
**Sales 717-626-1151 24 Hr. Service**

**NEW & USED SPUTNIKS**  
(and Sputnik parts!)

**NOBLE ROAD MILKING EQUIP.**

523 KIRKWOOD PIKE • KIRKWOOD PA 17536 (717) 529-1226

Dairy Equipment & Supplies • Sales, Service, & Repair

Lots & Lots of Used Buckets  
45, 55, 60 Lb. - Westfalia & DeLaval  
Also Available - New Buckets 65, 75, 80, 90 Lb

Lots of Used Westfalia & DeLaval Claws And  
New & Used Stainless Steel Teat Cup Shells

**Westfalia • DeLaval • Top Line • Bou-Matic  
Animal Health Supplies • Soaps & Detergents**

**SPECIAL PRICE:** Sputnik socks,  
new vacuum pumps, carrying pails,  
stainless steel tubs, and inflations



**WE INSTALL VACUUM SYSTEMS!**

**DEALERS WELCOME**

Vacuum Systems

**USED TANKS**

- 5,000 Gal DairKool
- 4000 Gal Mueller OHF
- 2000 Gal Surge
- 2000 Gal Zero
- 1500 Gal Mueller OH
- 1250 Gal. Mueller OH
- 1000 Gal. Mueller OH
- 1000 Gal. Surge
- 800 Gal. Mueller OH
- 800 Gal. Surge
- (3) 600 Gal Mueller OH
- 545 Gal Sunset
- 5600 Gal Milk Tank Trailer
- 5000 Gal Milk Tanker

**STORAGE TANKS**  
600, 2000 & 3000 Gals.

Hagerstown, MD

**301-797-3921**

**LIVESTOCK  
EQUIPMENT**

**New Holland Fence**

915 West Main St.  
New Holland, Pa. 17557

**717-656-9596**

**Installation & Material**

Hi-Tensil Split Rail  
Board Fencing  
Woven Wire Vinyl Fencing

**New Holland Fence Vinyl Division**

Vinyl Fences Never Need Painting, No  
Rotting or Splitting, Low Maintenance

**Visit our New Showroom**

Picket Fences Trellis  
Rail Fence - 3 Rail & 4 Arbors  
Privacy Fences Mailboxes  
Specialty Poly Lumber Products

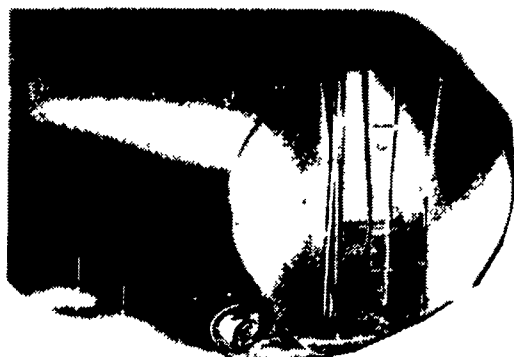
**Quality Fencing  
Retail Sales**

**A 1st Class Team  
Together For 35 Years!**

**RUFUS BRUBAKER REFRIGERATION**

And...  
**MUELLER**  
DAIRY FARM EQUIPMENT

Your Milk Tank Is Used At Least Twice A  
Day, 365 Days Per  
Year. Your Milk Is Your  
Income  
- Why Not Store It In  
The Best?



For The Best Products  
With The Best  
Performance, You Can Count On Mueller.  
Give us A Call For More Information.

**- OUR FIVE LOCATIONS TO SERVE YOU -**

Manheim, Myerstown, Reading, Quarryville, and York  
**Toll Free 866-665-3525**  
1048 North Penryn Road  
Manheim, PA 17545

★ Call Today For All Your New or Used Milk Tank And Refrigeration Equipment Needs!

**JUNIATA EXCAVATING AND SERVICES**

Fencing & Gate Sales and Installation

R.D. #1 Box 892, Claysburg, PA 16625  
**Phone: (814) 239-5972**

**FREE SITE INSPECTION & ESTIMATES**  
Fax: (814) 239-0007 Email: [jefencing@cs.com](mailto:jefencing@cs.com)

**DEER CONTROL**

**HORSE FENCE**

**SPECIAL SALE TREATED POSTS:**  
4-5"x7' Post - \$5.80 ea Reg 56.60  
4-5"x10' Post - \$8.70 ea Reg 59.95  
sales tax & delivery fees not included

**CATTLE & FARMING HIGH TENSILE**

**GATES**  
Custom  
Unit Cabs