

www.ransome.com

Ransome



Click For Photos & More Information

Established 1916

Phila., PA

DOZERS

Cat D3B	1986 canopy, 6-way blade, good U/C, excellent condition	\$18,500
Cat D4H XL	1995 canopy, 6-way blade good U/C, 9700 hours	\$35,000
Cat D5C LGP	1997 canopy, 6-way blade, 6595 hours	\$36,000
Cat D5C LGP	1997 cab, PAT blade, 60% U/C 6486 hours	\$33,000
Cat D5C LGP	SOLD 1997 canopy 6-way blade, 85% U/C 1778 hours	SOLD
Cat D5C XL	1999 canopy, 6 way blade, Hy Stat 2400 hrs pins & bushing turned Feb 2003	\$49,000
Cat D5C XL	1999 canopy, 6-way blade, 2900 hours	\$47,000
Cat D5H XL	SOLD 1996 canopy 6-way blade good U/C, 9390 hours	SOLD
Cat D5H XL	SOLD 1993 canopy 6-way blade 80% U/C 13345 hours	SOLD
Cat D5M XL	2000 cab, air, 6-way blade, 80% U/C 1073 hours	\$89,000
Cat D5M XL	1998 cab, air, PAT blade, New CAT U/C, 4006 hours serviced & painted	\$82,000
Cat D5M XL	SOLD 1996 canopy, 6-way blade, FTC, 50% U/C 2200 hrs	SOLD
Cat D8N	1993 cab, air new Cat U/C, shoes 50% low hours	\$131,000
Cat D8R WDA	1998 cab, air U/C needs work recent power train rebuild	\$155,000
Cat D8R	1999 cab air ripper, 1900 hours	\$315,000

CRAWLER LOADERS

Cat 939	1997 canopy GP bkt U/C about 60%, 1 233 hours	\$42,000
Cat 953C	1998 cab air GP bkt, fair U/C, 8600 hrs	\$63,000
Cat 963B	1998 cab, air, GP bkt, poor U/C, 8400 hrs	\$79,000
Cat 963B	1998 cab, air, GP bkt, new CAT U/C, 5500 hrs, painted, 5,500 hrs	\$135,000
Cat 963C	2000 cab, air, GP bucket, 3100 hours	\$165,000

EXCAVATORS

Cat EL240	SOLD 1993 52,000 lbs, 9'2" stick, 32" pads, 36" bucket	SOLD
Cat M318	1999 39,600 lbs, 9'2" stick, dual tires, front outriggers	CALL
Cat 320BN	1998 46,000 lbs 9'6" stick 20' pads, 67" bucket	\$69,800
Cat 325BL	1998 60,000 lbs, 10'6" stick 33 pads 30' bucket excellent condition	\$94,000
Cat 330L	SOLD 1996 75 000 lbs 10 10' stick, 33 pads, 36' bucket needs some TLC	SOLD
Cat 330BL	2001 80 000 lbs 10 10' stick, 60 bucket excellent condition	\$168,000

WHEEL LOADERS

Cat 950G	SOLD 1998 cab air, GP bkt, 23 5x25 tires @ 50%, ride control, 2763 hours	SOLD
Cat 980G	1999 cab, air, GP bkt, tires 80% left, a scale lube system, excellent cond	\$169,000
Cat 980G	2001 cab, air, GP bkt ride control, 3800 hrs, New L-5 Michelin XHA tires	\$233,000
Cat 988F	1999 cab, air, GP bucket, new tires, 6200 hours HIGH LIFT	\$312,000
Cat 988F	1995 rebuilt engine, trans & TC, New L-5 tires, centerpin, done along with many other components	\$239,000

SCRAPERS

Cat 613	1974 canopy, 23 5x25 tires, good service records	\$12,000
Cat 615	SOLD 1986 canopy, no cushion hitch 29 5x25 Michelins about 45% remaining	SOLD
Cat 615C	1995 cab, no air, cushion hitch, tires 80% remaining, 5800 hrs	\$128,000
ICON 17C (2)	2001 17 yard pull scraper	Each \$35,000
ICON 19C (2)	2001 19 yard pull scraper, 650 hours	Each \$39,000

TRUCK

Cat D300E	1996 30 ton, 4800 hrs, engine & torque converter rebuilt 7/2000 truck in excellent condition	\$93,000
Cat 769D	1996 cab, air, tailgate, liners, 18 00-33 Michelins, 6,900 hours	\$259,900

COMPACTORS

Cat 815B	1994 cab, air, straight blade w/tilt good feet 5700 hours	\$128,000
Cat 815F	1999 canopy, straight blade w/tilt 2000 hours	\$218,000
Cat 826G	1998 cab, air, 40" Caron pin on tips CAT blade, 4944 hours	\$186,000
Cat 836 Trash Com	1996 cab, air, Caron blade, Caron feet, unit rebuilt March 2001	\$228,000

PAVERS

Blaw-Knox PF180-H	1996 10' standard screed w/3 strike-offs, 2100 hours	\$56,500
BG 225-B	1993 8'-16' screed excellent condition	\$70,000
BG 260-B	SOLD 1995 10'-20' B Extend-a-mat screed grade & slope control	SOLD

AG EQUIPMENT

Challenger CH85E	SOLD 1998 cab, air, set up for scraper, 27' belts, 3800 hours	SOLD
Challenger CH85E	1999 cab, air, set up for scraper, 27' belts 1943 hours	\$95,000
Challenger CH95E	2001 cab, air, set up for scraper, 600 hours	P.O.R.
Challenger CH95E	2001 cab, air, set up for scraper, 800 hours	P.O.R.

ROLLERS

Cat CP-433-C	1998 canopy, 66" sheepfoot roller, blade, 988 hours	\$47,000
Cat CP-563-D	2000 canopy, 84" pad foot drum, blade 1803 hours	\$69,000
Cat CS-563-D	SOLD 2000 canopy, 84" single drum vibratory roller, 1874 hours	SOLD

HAMMER

Cat H-140 S	1998 fits a 52,000 lb 74 000 lb machine, repaired painted no bracket	\$16,000
-------------	--	----------

Our Friendly Competitor's STUFF

John Deere 862B	1997 16 CY, cab, no air, axle suspension good tires	\$90,000
Case 1840	1991 canopy, 66" bucket	\$10,500
Case 580SL's (8)	1998-99 cab 4WD, E-stick	Each \$33,000
Case 590SL's (3)	1998-99 cab, 4WD E-stick	Each \$33,000
Komatsu D41P-6	1998 canopy, 6-way blade, U/C about 50%, 4,151 hours	\$38,000
Liebherr R-925-L	1978 51,000 lbs, 10'10" stick, 30' pads, 36" bucket with tree shear	\$11,000
Koehring 6633-7	1990 72,000 lbs, 10' stick, 32" pads, 9000 hours	\$29,000
NPK C-6	2002 vibratory plate compactor, fits CAT 315BL, or 35 000# machine	\$6,500

Please Call
Tom Rosser
215-245-2749



800-525-3135

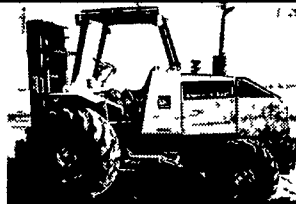
www.ransome.com Philadelphia, PA



Please Call
Brendan Kelly
215-245-2784

LATE MODEL PNEUMATIC TIRE FORKLIFTS

Partial inventory - please call for additional equipment



1999 American Eagle, 8,000 lb., 97/180 Triple Mast, Side Shift, Diesel, 4 Wheel Drive, 400 Hours • \$28,800



1988 Champ 8,000 lb., 112/154 Std. Mast, Gas, 2 Speed Auto • \$9,900



1997 Nissan 3,500 lb., 83/185 Triple Mast, Side Shift, LP Fuel, Auto Trans • \$10,950



1999 Hyster 3,500 lb., 83/129 Full Free Lift, Gas, Auto Trans., 1800 Hrs • \$9,450



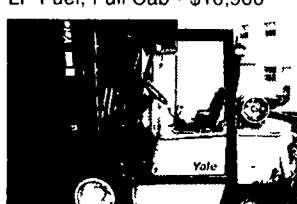
1997 Hyster 4,000 lb., 71/153 Triple Mast, Side Shift, LP Fuel, Auto Trans., 1500 Hrs • \$9,450

- 1996 King Lift 3,000 lb., 84/128 Wide View Mast, LP Fuel, Auto Trans., 1300 Hours \$7,200
- 1991 TCM 3,000 lb., 84/129 Wide View Mast, LP Fuel, Auto Trans \$6,950
- 1999 Linde 3,500 lb., 82/180 Triplex Mast, Side Shift, LP Fuel, Hydrostatic Trans., 2100 Hours .. \$9,850
- 1997 Mitsubishi 3,500 lb., 85/190 Triplex Mast, Side Shift, LP Fuel, Auto Trans \$9,150
- 1999 Tailift 3,500 lb., 85/130 Wide View Mast, Side Shift, LP Fuel, Auto Trans., 350 Hours .. \$10,900
- 1998 Clark 5,000 lb., 78/117 Wide View Mast, Diesel, Auto Trans, 1200 Hours \$10,900
- 1998 Hyster 5,000 lb., 85/130 Full Free Lift, Side Shift, Gas, Auto Trans \$9,850
- 2000 Komatsu 5,000 lb., 79/170 Triplex Mast, Side Shift, LP Fuel, Auto Trans., 500 Hours .. \$13,500
- 1998 Komatsu 5,000 lb., 85/126 Wide View Mast, Side Shift, LP Fuel, Auto Trans., Full Cab, 1200 Hours .. \$10,800
- 1997 Mitsubishi 5,000 lb., 95/147 Wide View Mast, Side Shift, Diesel, Auto Trans, Dual Drive .. \$9,350
- 1998 Nissan 5,000 lb., 100/157 Wide View Mast, Side Shift, Gas, Auto Trans \$9,800
- 1998 Clark 6,000 lb., 78/118 Wide View Mast, Side Shift, LP Fuel, Auto Trans., 1200 Hours .. \$10,900
- 2000 Komatsu 6,000 lb., 95/146 Wide View Mast, Side Shift, LP Fuel, Auto Trans., 800 Hours \$13,500
- 1995 Hyster 8,000 lb., 110/169 Wide View Mast, Side Shift, Gas, Auto Trans., Full Cab \$10,900
- 1999 Hyster 8,000 lb., 92/193 Triplex Mast, Side Shift, LP Fuel, Auto Trans., 3100 Hours ... \$14,900
- 1989 Nissan 8,000 lb., 95/145 Wide View Mast, Side Shift, LP Fuel, Auto Trans., Dual Drive .. \$8,100
- 1998 Hyster 9,000 lb., 85/172 Triplex Mast, Side Shift, LP Fuel, Auto Trans \$13,900
- 1993 Hyster 10,000 lb., 83/111 Wide View Mast, Diesel, Auto Trans., Dual Drive, Fresh Paint \$14,500
- 1999 Tailift 10,000 lb., 110/157 Wide View Mast, Side Shift, Diesel, 2 Speed Auto, Dual Drive, 1500 Hours \$19,500
- 1999 Hyster 11,000 lb., 83/162 Triplex Mast, LP Fuel, Auto Trans., 2200 Hours \$17,900
- 1995 Komatsu 15,000 lb., 108/130 Wide View Mast, LP Fuel, 2 Speed Auto, Dual Drive ... \$18,900
- 1994 TCM 15,000 lb., 135/177 Wide View Mast, Side Shift, Fork Positioner, Diesel, 2 Speed Auto .. \$19,500

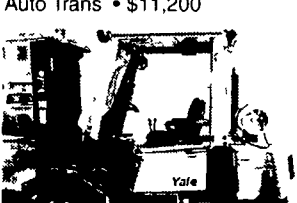
- Also large selection of late model cushion tire forklifts.....LP Fuel and Electric
- Leasing available
- New Hand Pallet Jacks - Special Pricing \$350



1998 Linde 6 000 lb., 85/185 Triple Mast, Hydrostatic Trans LP Fuel, Full Cab • \$10,900



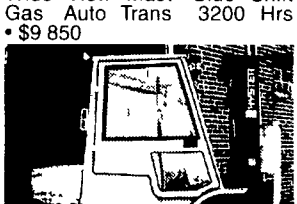
1997 Yale 6,500 lb., 93/199 Triple Mast, Side Shift, LP Fuel Auto Trans • \$11,200



1998 Yale 7,000 lb 88/125 Full Free Lift LP Fuel Auto Trans • \$8 900



1997 Hyster 6,000 lb., 106/158 Wide View Mast Side Shift Gas Auto Trans 3200 Hrs • \$9 850



1998 Hyster H60XM, 84/182 Triple Mast, Side Shift, Gas, Auto Trans., Full Cab • \$10,700



INDUSTRIAL EQUIPMENT INC.

Phone (610) 369-9778
Fax (610) 369-9858

215 S. Washington Street, Boyertown, PA 19512

