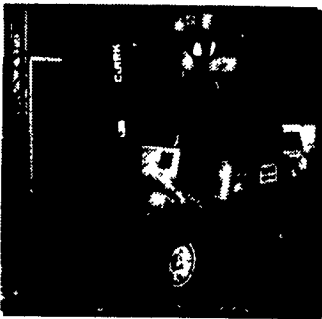


**used forklift sales,
service and rentals**



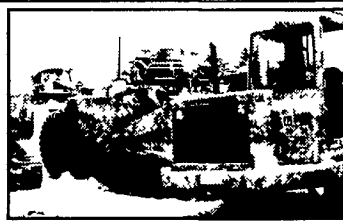
1983 Clark C500, 5000lb, Pneumatic Tires, LP, 3000 hrs, 2 Stage Mast, Great Condition, \$4,500

superior lift 717.336.1698

used forklift sales, service & rentals



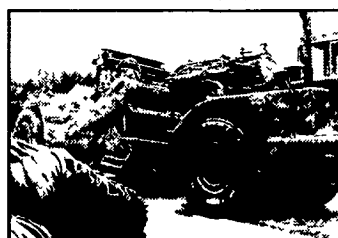
2000 Extec Turbo Track portable three product screener.



1987 Cat 613C Paddle Pan 6400 hours



1996 Cat 615C Paddle Pan Series II 2600 hours



1987 Cat 615C Paddle pan 6100 hours

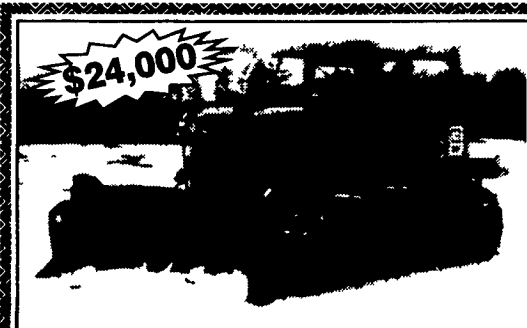
Pans starting at \$30,000. One owner
Many extras, shredder, used on one job 400 hours.

*Call Todd at **610-372-6511 ext. 239**
if you have any questions or need further information.

aster Farming, Saturday, March 22, 2003-D5

1996 Case 586E all terrain forklift, 4x4, 21' mast, 6000lb cap., 1900 hrs, \$17,765. JD model 1070 compact tractor 4x4, manual trans., PTO, 900 hrs, \$11,500. 717/554-4528

Bucycu Erie 15B, 580 Super E backhoe. Case 1150C 6-way dozer. Case 1080B excavator. Gallion road grader. 1988 Ford dump trucks w/tandem axle. 1991 Ford dsl flat-bed. 302-653-9329 eve



CATERPILLAR D75
Rear Ripper & Fleco Root Rake
302-856-7018

JERRE MARTIN REPAIR

391 N. Farmersville Rd., Ephrata, PA 17522
(Just minutes off RT 222)

717-859-3283

Toll Free 877-317-5348

WE ARE BUYERS FOR LATE MODEL CONSTRUCTION EQUIPMENT NEEDING REPAIRS

**Sales &
Service**

**Rental
Repairs**

Road Service Available Now, Custom Repairs On All Makes Construction Equipment



JD 590D Excavator, w/Thumb
\$28,000



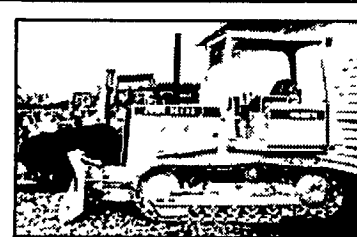
'80 Cat 955L, 13X Series **\$19,500**



'93 Cat 963 Crawler Loader
\$38,000



'96 Gehl 883 Telescopic Forklift
\$24,000



94 JD 450G **\$24,500**



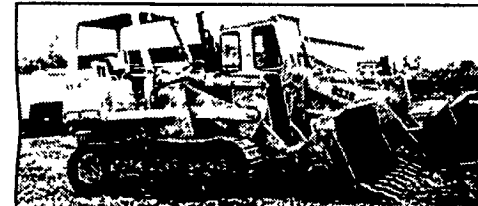
'95 Case 580 Super L, 4x4, OROPS, E-Hoe **\$23,000**



JD 450C Crawler Loader, Good Cond.
\$13,500



'87 Cat 955B **\$15,500**



93 JD 655B, LGP **\$27,000**



JD 644B Rebuilt Motor **\$18,000**



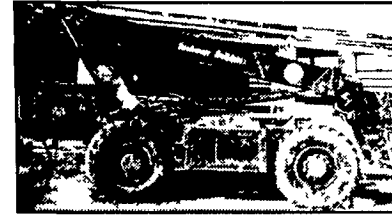
'99 Cat 226 **\$15,000**



Cat 951C **\$14,700**



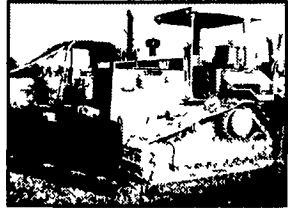
JD 570A, Excellent **\$16,200**



Dyna Lift Telescopic Forklift **\$12,500**



Cat 416C IT 4x4, E-Hoe **\$30,000**



Cat D5MXL **\$55,000**



93 Belco SK150 LC Mark III Excavator **\$27,000**



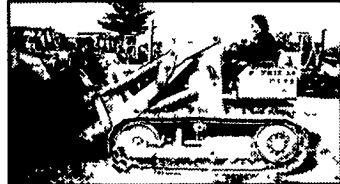
Case 1840 Rebuilt Hydro's **\$8,500**



JD 555 Crawler Loader, Good Cond. **\$13,500**



Bomag BW210D **\$10,500**



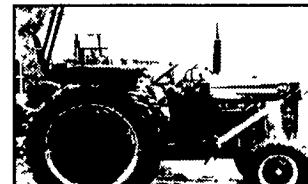
JD 450 crawler loader, choice of 2 **\$7,500**



88 Cat 963 **\$31,000**



Case 855D, New UC **\$18,000**



MF 165 w/New Kelley Loader **\$7,000**



Case 1845C **\$8,000**



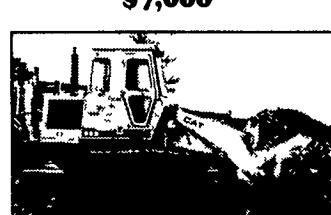
Cat D3C Series II, 6-Way Blade **\$24,500**



96 Samsung 130LC-2 **\$26,000**



'96 Zoom Boom 1850, 6000#, 36 Ft. **\$18,500**



'90 Cat 953 **\$36,000**



'95 Case 580 Super L, 4x4, Dsl. **\$27,000**



'96 Hypac CB52B w/Blade, Drum Drive, Pad Foot Roller w/Smooth Drum Conversion Kit, Low Hrs. **\$34,000**



Vibromax 2000, Dbl. Drum Asphalt Roller **\$5,500**



Takeuchi TB15 **\$7,500**



IR DD23 Vibratory Asphalt Roller **\$6,500**