

1979 Hyster 7000lb forklift, 6 cyl Continental gas eng, \$3,500/obo. 717-393-6530 or 717-940-1882

5000 # Hyster forklift, solid pneumatic, LPG, 150" lift, runs good. Komatsu forklift, 3000#, triple mast, lights, new solid pneumatic tires, LPG, recent OH, v.g. cond. Fishers Farm Shop 610-869-4477

1993 544 B Gradall 10,000 lb cap, 48ft lift outriggers, G cond, \$32,000/obo 717-629-5898

Austin Weston all wheel drive crane, 15 ton cap, 52' hyd. boom, fair cond. \$3200. 814-784-5127

Bradco trencher, 617 model, good cond, for Case, \$2,500. 717-927-8711.

NH LS180 skid steer, new condition, 75 actual hrs, must sell. Pallet fork, light material bucket, manure slurry bucket. 570-928-8754 eves

Dodge 900 1969 dump, 33,000 gvw, new tires & batteries, great site truck or ready for the road, \$2500 OBO. 610-593-6206 after 6pm

450 Case w/ex hoe 4/1 bucket, under carriage 90%, needs engine, \$3,800. 410-592-7800

Cat 941B 8083516, 374 hrs on eng, new trac & carriage, 717-543-0906 eve

Ditch Witch Walk-Behind 1500 elect. start, exc. cond. Hunterdon, 908-730-8100.

Backhoes, 4wd. Wood chippers. Stump grinder. Dsl welder. 302-998-1788

Telescopic forklift JCB 530B, 36ft reach, stabilizers, 4wd, pallet forks, material bkt, \$21,000/obo. 610-682-4160

Gallion model 104 grader, fair condition, \$3,000. 570-753-3391.

1986 Kato 550SE excavator, 34,000 lbs, 4,500 hrs, good cond, \$12,000. 570-753-3391.

'95 Case 550E long track crawler dozer, 6-way blade, new U/C, ex cond, \$29,500. 717-436-6137

213 BW Bomag vibratory roller, 84 inch smooth drum, 23.1x26 turf tires, \$26,500. 717-436-6137

'98 20 ton tag-a-long trailer, air brakes, ex cond, \$8700. 717-436-6137

Austin Western grader, 6 wheel, recent clutch, runs decent, \$6800. 570-425-2371

IH 175B crawler/loader, rebuilt engine, Good 4 in one bucket, undercarriage 60%, bad trans, Good parts machine, best offer. 717-862-3970

1985 Dynapac roller, CC10 Series II, 2400 hrs, Deutz dsl, 100% hydrostatic, \$5995. 1973 AC HD16, 13' U-blade, 85% UC, 50T winch on rear, hyd. lift, \$7995. 1997 Case 580 Super L, ex. boom, 4-in-1 bucket, encl. cab, AM FM stereo, \$36,500. 717-432-3219

### J D EQUIPMENT

Pennsburg, PA 18073 • 215-679-5958

#### New Thomas Skid Steer Loaders

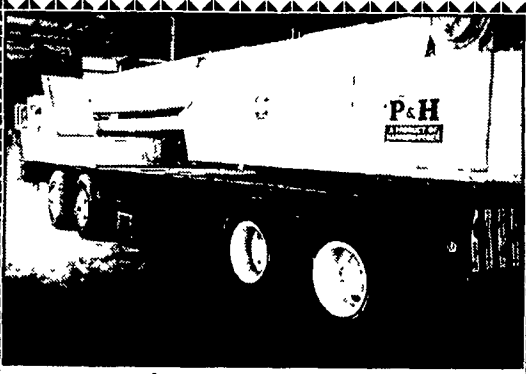
JD 450G, 6-way dozer . . . . \$21,900

JD 555G Loader

JD 450 Loader . . . . . \$7,900

96-97 Thomas' w/cab & heaters

Repairs • Sales • Service [www.jdequip.com](http://www.jdequip.com)



**P&H Hyd. Crane T300, G. Condition \$43,900 302-322-9400**



**Allis 706C 6,000 lb. 22 Ft. Forklift \$8,000**

**Heavy Equipment Loader Parts**  
RT 22 Grantville, PA  
(717) 469-0039 [help10070.com](http://help10070.com)



**1987 Case 580 Super E: 4WD. Cab, Extenda-hoe. 5500 Original Hours, 80% Rear Tires, Excellent Brakes, Good Runner Located in Lanc Cty**



**1988 JCB 1400B, 4WD, Cab, Extenda-Hoe, Runs and Operates Well. Maybe could be painted soon Located in Lanc Cty 410-688-2739**

### USED & NEW PARTS PRICED RIGHT

Dismantling Over 650 Machines For Parts

Cat	IHC	Gallion
Case	Michigan	Wabco
John Deere	Hough	Dynahoa
Trojan	Terex	Koehring
Drott	Hein Werner & Others	AC/Fiat Allis

**REPAIRS & REBUILDING AT OUR LOCATION. Reliable Service & Exp. Personnel. Call Jim Shelly.**

#### NATIONWIDE PARTS LOCATING SERVICE

In addition to our own large inventory we have two computerized parts locator services nationwide & Canada ready to serve you. In less than a minute over 600 used & new parts & equipment suppliers will receive your parts request. Parts are located easily & at substantial savings. Try Our Services. Parts Shipped Anywhere Direct To You.

All Parts Guaranteed. "We Return All Phone Calls"

#### BALANDA EQUIPMENT, INC.

P.O. Box 407 • Route 29 • Palm PA 18070

Phone 215-679-3900 • Fax 215-679-8727

**TOLL FREE: 1-800-322-8030**

### BUYING & SELLING USED CONSTRUCTION EQUIPMENT, NEW & USED PARTS & ATTACHMENTS CALL

**H.E.L.P., INC.**  
(717) 469-0039  
FAX (717) 469-7679

Specializing In Caterpillar Parts also available for Case, Fiat, IHC, Komatsu, Deere, Etc.

**ALL PARTS AT DISCOUNT PRICES!**

**\*\*PARTS LOCATING SERVICES\*\***

Call Us For Your Parts & Service Manual Needs

### HEAVY EQUIPMENT LOADER PARTS, INC.

10070 Allentown Blvd., Grantville, PA 17028

# ATTENTION

Contractors, Business Owners, Farmers & Others  
You Don't Have To Buy Excavating Equipment For Your Jobs  
**Rent From Us For Less!**



**BACKHOES TRACK LOADERS**



**DOZERS EXCAVATORS**



**VIBRATORY ROLLERS SKID LOADERS**



**LASER GRADERS REMOTE TRENCH ROLLERS**



**LASER LEVELS BACKHOE w/HAMMER**



**DUMP TRUCK HAULING EQUIPMENT TRANSPORTING**



**MINI EXCAVATOR EXCAVATOR w/HAMMER**

Call For Prices & Availability

## STONEY CREEK CONTRACTOR SERVICES

415 Park Road, P.O. Box 327, Fleetwood, PA 19522

610-944-5332 • Fax: 610-944-1562 • 877-944-5332

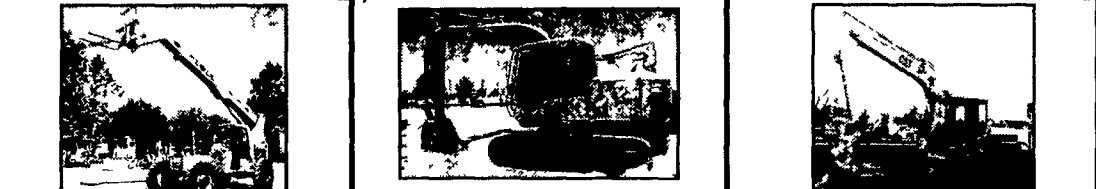
## Mid Maryland Rentals, Inc.

8865 Baltimore National Pike Phone: (301) 371-5500  
P.O. Box 186 Middletown, MD 21769 Fax: (301) 371-9299

**Financing Available**



**1995 Cat 953B, cab/a c, 4 in 1 or gp bucket, v g undercarriage, fresh paint, work ready, \$72,500**  
**1989 Cat 963LGP, factory cab, gp bucket w/teeth, v g undercarriage & condition, work ready, \$44,000**  
**1984 John Deere 690B, 36" bucket, standard stick, joystick controls, v g undercarriage & condition, work ready \$19,000**



**Telescopic Forklifts, Gehl, Ingersoll Rand, Lull, Terex, 6,000-8,000 lbs, from \$16,500**  
**1994 Hitachi EX120-2, 42" bucket, v g undercarriage, fresh paint, 4,000 hours, work ready, \$33,000**  
**1995 Cat 311, 24" bucket, standard stick, v g undercarriage, fresh paint, work ready, \$29,500**

- 1999 ASV 2810, gp bucket, high flow auxiliary hydraulics, 83HP Isuzu diesel, v g condition, work ready \$22,000
- 1987 Cat 950B, cab, gp bucket w/boce, v g paint & condition, rebuilt transmission \$38,500
- 1980 Dresser 125E crawler loader, orops, 14 cu yard gp bucket w/teeth, v g undercarriage & cond, work ready \$15,250
- 1987 Ford 555, cab 2 wheel drive, standard hoe, 24" bucket v g tires & condition, work ready \$10,500
- 1998 Komatsu D41E-6, OROPS, 6 way blade, v g undercarriage & condition 2550 hrs, work ready \$42,500
- 1996 Rammax RW14D3-FMR, 33" padfoot trench roller, v g cond, work ready \$6,500

## Kubota



SNOW BLOWER

FRONT BLADE

SPRAYER

SWEeper

**Largest Kubota Backhoe Dealer in the Region!**

**BX22**

## MESSICK'S

22 HP 4WD  
3-Cylinder, liquid-cooled  
E-TVCS diesel engine -

## MESSICK'S

Buy NOW at **0%** 36 months\*  
financing \*some restrictions apply



No Tools Required design



187 Merts Drive (Rheems Exit-Rte 283)  
Elizabethtown, PA 17022  
800-222-3373 - 717-367-1319

[www.messicks.com](http://www.messicks.com)