

Eighty-Four Livestock Auction
Eighty-Four, Pa.

Monday, March 17, 2003
Report Supplied By PDA

CATTLE 409...(PDA)...cows steady to 1.50 lower, bulls steady
STEERS: Choice 1-3 1030-1215 lbs 68.00-74.50, Standard 1-2 52.00-54.00
HEIFERS one Choice 1-3 1330 lbs 69.00
COWS: Breakers 75-80% lean 39.00-41.00, Boners 80-85% lean 36.00-38.50, Lean 85-90% lean 32.00-36.50. Shells 31.50 and down
BULLS: Yield Grade 1 1540 & 2050 lbs 50.00 & 53.50, Yield Grade 2 930-2110 lbs 42.50-49.00.
FEEDER CATTLE STEERS. Medium & Large 1 385-485 lbs 77.00-88.00, 600-760 lbs 70.00-76.00, Medium and Large 2 335-560 lbs 67.00-75.00, 500-885 lbs 61.00-68.00; HEIFERS: Medium and Large 1 300-500 lbs 68.00-80.00, 520-620 lbs 66.00-77.00, Medium and Large 2 360-500 lbs 54.00-65.00, 520-795 lbs

54.00-63.00; BULLS: Medium & Large 1 325-620 lbs 75.00-87.50, Medium and Large 2 340-470 lbs 62.00-71.00, 500-695 lbs 59.00-72.00.
CALVES 114...(All calves sold per cwt). VEALERS: Standard and Good 70-110 lbs 37.50-75.00, Utility 50-100 lbs 15.00-35.00. FARM CALVES: Holstein bulls steady to 35.00 higher. No 1 Holstein bulls 90-125 lbs 127.50-185.00 mostly 140.00-170.00, 80-90 lbs 120.00-135.00, No 2 80-125 lbs 77.50-125.00, one No 1 Holstein heifer 115 lbs 300.00, No 2 85-130 lbs 150.00-235.00
Beef cross bulls and heifers 65-120 lbs 80.00-155.00, 135-295 lbs 71.00-125.00.
HOGS 14...BARROWS AND GILTS 49-54% lean 270 & 280 lbs 45.00 & 47.00, 45-50% lean 245 & 260 lbs 38.00 & 39.00, 40-45% lean 205-260 lbs 31.50-34.00.
SOWS: 1-3 405 & 450 lbs 24.00 & 25.00, one Medium 325 lbs 12.00.
BOARS: one 530 lbs 4.50.
FEEDER PIGS 8...US 1-2 33 lbs 24.00 per head.
SHEEP 93...SLAUGHTER LAMBS:

High Choice and Prime 105-120 lbs 85.00-113.00, Choice 70-85 lbs 123.00-130.00, Good and Choice 50-65 lbs 110.00-117.00. SLAUGHTER SHEEP-10.00-47.50, Yearlings 65.00-67.50
GOATS 65...(All goats sold by the head with weights estimated). Kids: Selection 1 20-40 lbs 24.00-32.00, 40-70 lbs 50.00-57.00, 70-100 lbs 63.00-74.00. Selection 2 40-70 lbs 39.00-49.00. Selection 3 20-40 lbs 10.00-20.00. Nannies 50-70 lbs 20.00-25.00, 70-100 lbs 37.00-46.00. Billies: 70-100 lbs 61.00-74.00, 100 lbs and over 95.00-105.00.

lbs 47.00-57.00, Large 3 560-655 lbs 43.00-47.00; BULLS: few Medium 1 415-525 lbs 69.00-74.50, Medium and Large 2 495-760 lbs 54.00-66.00.
CALVES 105...VEALERS. Standard and Good 70-120 lbs 30.00-50.00, Utility 58-105 lbs 17.00-30.00. FARM CALVES: Holstein Bulls steady to 15.00 higher No 1 Holstein bulls 90-120 lbs 120.00-140.00, No 2 80-125 lbs 70.00-120.00; No 1 Holstein heifers 90-104 lbs 270.00-320.00, No 2 80-115 lbs 140.00-235.00
Beef cross bulls and heifers 85-135 lbs 120.00-150.00
HOGS 94...BARROWS AND GILTS Steady to 4.00 lower. 45-50% lean 240-285 lbs 34.25-38.50, 40-45% lean 225-325 lbs 29.00-35.50, Litewrights 49-54% lean 110-200 lbs 29.50-35.00
SOWS: 1-3 330-578 lbs 22.00-28.00, one Medium 374 lbs 12.50.
BOARS: 510-848 lbs 6.00-6.50.
FEEDER PIGS 18...US 1-2 25-35 lbs 19.00-25.00, US 3 20-30 lbs 6.00-11.00 per hd.
SHEEP 20...SLAUGHTER LAMBS. couple High Choice and Prime 150 lbs 71.00, Choice 55-75 lbs 115.00-117.00, couple 93 lbs 97.00 SLAUGHTER SHEEP: 17.00-20.00
GOATS 19...(All goats sold by the head with weights estimated) Kids. Selection 1 20-40 lbs 34.00-41.00 Selection 2 20-40 lbs 22.00-30.00, selection 3 20 lbs 10.00-15.00 Nannies: 50-70 lbs 25.00-31.00, one 100 lbs 70.00 Billies one 100 lbs 64.00

Grantsville Livestock

Grantsville, Maryland
Report Supplied by Auction
Saturday, March 15, 2003

STOCK STEERS AND BULLS 200-500 lbs. 45.00-84.00
STOCK HEIFERS. 35.00-73.00.
SLAUGHTER STEERS Good to Choice 63.00-72.00, Medium to Good 52.00-62.50.
HOLSTEIN STEERS Good 50.00-58.00, Light 46.00-52.00
SLAUGHTER HEIFERS Good to Choice 60.00-72.00, Medium to Good 50.00-66.00
BULLS Heavy 43.00-54.00, Light 40.00-47.00
COWS Utility Holsteins 37.00-45.00, Canners 28.00-34.50, Culls 25.00 and down
BOB CALVES. 40.00 and down
HOLSTEIN BULL CALVES RETURN TO FARM 90-120 lbs Up to 130.00
HOLSTEIN HEIFER CALVES RETURN TO FARM: Up to 230.00
BEEF CROSS CALVES RETURN TO FARM Up to 195.00.
HOGS Top Quality up to 46.00, Heavy up to 40.00, Light 25.00-39.00, FEEDER PIGS, BY HEAD: Up to 24.00
SOWS 20.00-32.00
MALE HOGS: 3.00-19.00.
LAMBS 70-85 lbs up to 129.00, 85-125 lbs up to 120.00, 30-60 lbs up to 144.00, Culls up to 60.00
SHEEP. Up to 42.00.
GOATS Large 55.00-116.00, Medium 25.00-70.00, Small 10.00-44.00, all by the head, kid 3.00-50.00.
Feeder sale every second Sat per month

Belknap Livestock

Belknap, Pa.
Report Supplied By USDA
March 19, 2003

CATTLE 165...(PDA) Slaughter cows steady to 1.00 lower, slaughter bulls steady.
STEERS: one Choice 2 1180 lbs 71.00, few Standard 1-2 52.50-62.00.
HOLSTEIN STEERS: High Choice one 1190 lbs 69.00, Choice 1030-1350 lbs 59.25-65.75, Select 1-2 56.00-58.50, Standard 1-2 46.00-53.25
HEIFERS. one Select 2 64.50, couple Standard 50.50-54.25.
COWS: Breakers 75-80% lean 39.50-44.25, Boners 80-85% lean 36.00-40.00, Lean 85-90% lean 32.25-37.00. Shells 32.00 and down.
BULLS: Yield Grade 1 1905-2000 lbs 50.25-55.75, Yield Grade 2 1095-2015 lbs 43.75-48.50.
FEEDER CATTLE: STEERS: few Large 3 840-998 lbs 39.50-47.25; HEIFERS: few Medium 1 395-565 lbs 63.00-70.00, Medium and Large 2 375-500 lbs 49.00-55.00; 515-785

GOLD & SILVER WATCH

DOES THE CURRENT STOCK MARKET FIASCO GOT YOU DOWN? HAVE YOU THOUGHT LATELY ABOUT ALTERNATIVE INVESTMENTS? YOU MIGHT HAVE BEEN WAITING FOR THIS OPPORTUNITY TO DIVERSIFY YOUR INVESTMENT PORTFOLIO
NOT MANY COMMODITIES OR STOCKS HAVE THE GLOBAL APPEAL AND VALUE LIKE GOLD AND SILVER NATIONS THROUGHOUT THE WORLD USE THESE METALS AS A STORE OF WEALTH

LEHIGH VALLEY FUTURES, INC.

HAS THE KNOWLEDGE AND EXPERTISE TO ASSIST YOU IN THESE INVESTMENTS IN ADDITION TO GOLD AND SILVER, LEHIGH VALLEY FUTURES, INC THROUGH ITS FCM TRADES ON ALL MAJOR FUTURES EXCHANGES, FUTURES HAVE BEEN OUR ONLY BUSINESS FOR 30 YEARS

FOR INFORMATION, CONTRACT DETAILS AND FUTURES AND OPTIONS STRATEGIES...
PHONE (610) 577-0002 OR 800-543-8939

LEHIGH VALLEY FUTURES INC.

410 Bridge Street
Weissport, PA 18235
e-mail: greg@lvfutures.com
bryen@lvfutures.com

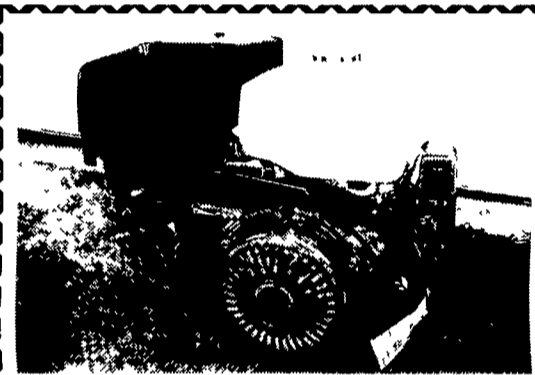
The risk of loss in trading futures and options can be substantial Futures and options trading may not be suitable for everyone You should carefully consider the risks in light of your financial condition in deciding whether to trade

Metal Roofing & Siding
Since 1948



A.B. Martin Roofing Supply
Why Pay More - For Less
BUY DIRECT • WE MANUFACTURE

Roofing & siding in the following
Aluminum • Galvanized • Galvalume
18+ Color Painted, #1 & #2 Material
Low Prices - Fast Delivery, Free Literature
Ephrata, PA 1-800-373-3703
Newville, PA 1-800-782-2712
(formerly Zimmerman Roofing)



Engine that looks exactly like Honda engine All parts interchange with Honda parts
5.5 HP\$225 8 HP\$300
13 HP\$400 13 HP electric start\$495

Georgetown Hydraulics
Christiana, PA 610-593-2753
Dealer inquiries invited

Purina® Calf Startena®

Getting
Your
Calf
Off To
A Good
Start



Building Milking Capabilities For A Lifetime.

HIGH BROS.

441 Centerville Road Gordonville, PA
717-354-0301

Fungicide Rotation Controls Diseases in Grapes

Black rot is one of the most serious diseases of cultivated and wild grapes. The disease is most destructive in warm wet seasons. The fungus attacks all green parts of the vine and unspiced fruit on susceptible varieties may become almost completely rotted by harvest.

Unlike most grape diseases free moisture on the leaves is actually detrimental to powdery mildew. Thus this disease is a more serious problem in drier growing climates or seasons when it is too dry for other grape diseases.

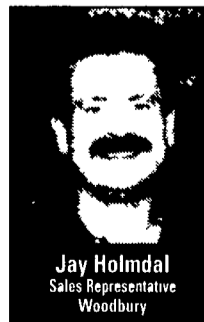
Since diseases like black rot and powdery mildew can have such devastating effects on grapes it's important to construct your program from fungicides that control the key diseases and can be rotated to prevent resistance. Initiating a preventive program using both Dithane® and Nova® 40W fungicides when new shoots are 1 to 3 inches high will control these key diseases while protecting against resistance.

A protective fungicide like Dithane covers the outside of the plant killing fungus spores as they germinate. Dithane with Rainshield® technology redistributes after a rainfall which adds to its effectiveness. Dithane is an excellent agent for the control of black rot and its multi-site mode of action makes it an excellent resistance management tool.

Among systemic fungicides none is better for the control of powdery mildew and black rot than Nova. It is absorbed into the plant and kills the fungus early in the infection process before symptoms appear. Nova has about three days of back action and can be sprayed on a 14-day interval.

Rotate Dithane and Nova early season then rotate Nova with strobilurin fungicides mid-season to manage resistance. Be sure to use Nova during the summer for improved late-season disease control.

For more information about using Dithane or Nova for disease control in grapes contact your local agent.



Jay Holmdal
Sales Representative
Woodbury

Dow AgroSciences

Call 1-800-4-A-AGRO for more information
www.dowagro.com