

PSACF Releases 2003 Fair Dates

HARRISBURG (Dauphin Co.) — Recently, the Pennsylvania State Association of County Fairs (PSACF) released its list of 2003 Fair Dates.

- Albion Area Fair, Sept. 9-13, Albion, Phone: (814) 756-3911.
- Allegheny County Fair & Exposition, Aug. 29-Sept. 1, Pittsburgh, Phone: (412) 243-3247, Fax: (412) 473-2768, WebSite: www.acfair.org, E-Mail: info@acfair.org.
- Allentown Fair, Aug. 26-Sept. 1, Allentown, Phone: (610) 433-7541, Fax: (610) 433-4005, WebSite: www.allentownfairpa.org, E-Mail: allenfair@aol.com.
- Beaver Community Fair, Sept. 14-20, Beaver Springs, Phone: (570) 658-4963.
- Bedford County Fair, Aug. 3-9, Bedford, Phone: (814) 623-9011, Fax: (814) 623-0692, WebSite: www.bedford-fair.com, E-Mail: Bedfair@Bedford-Fair.com.
- Bellwood-Antis Farm Show, Sept. 3-6, Bellwood, Phone: (814) 742-8121, E-Mail: Debbalk@aol.com.
- Berlin Brothersvalley Community Fair, Sept. 10-13, Berlin, Phone: (814) 267-4622, Fax: (814) 267-6060, E-Mail: depdlp@wpia.net.
- Big Knob Grange Fair, Aug. 26-30, Rochester, Phone: (724) 774-7093, E-Mail: DWS-SJS@Webtv.net.
- Bloomsburg Fair, Sept. 20-27, Bloomsburg, Phone: (570) 784-4949, Fax: (570) 387-4140, WebSite: www.bloomsburgfair.com, E-Mail: TheScoop@bloomsburgfair.com.
- Blue Valley Farm Show, Aug.

- 19-23, Bangor, Phone: (610) 588-2818.
- Bullskin Township Community Fair, Aug. 10-16, Woodale, Phone: (724) 887-3986.
- Butler Fair, June 27-July 5, Prospect, Phone: (724) 865-2400, Fax: (724) 865-9882, WebSite: www.bigbutlerfair.com.
- Butler Farm Show, Aug. 4-9, Butler, Phone: (724) 482-4000, WebSite: www.butlerfarmshow.com, E-Mail: bdloky@aol.com.
- Cambria County Fair, Aug. 31-Sept. 6, Ebensburg, Phone: (814) 472-7491, Fax: (814) 472-0663.
- Cameron County Fair, Aug. 17-23, Emporium, Phone: (814) 486-1775.
- Carbon County Fair, Aug. 6-10, Palmerton, Phone: (610) 826-1862, WebSite: www.carboncounty-fair.com, E-Mail: CCLLFA@ptd.net.
- Centre County Grange Fair, Aug. 22-28, Centre Hall, Phone: (814) 364-9212, Fax: (814) 364-9243, WebSite: www.grangefair.net, E-Mail: smt1@psu.edu.
- Clarion County Fair, July 20-26, New Bethlehem, Phone: (814) 275-3929, WebSite: www.clarion-countyfair.com, E-Mail: nbchamber@usachoice.net.
- Claysburg Farm Show, Sept. 3-6, Claysburg, Phone: (814) 239-2374.
- Clearfield County Fair, July 28-Aug. 2, Clearfield, Phone: (814) 765-4629, Fax: (814) 765-2186, WebSite: www.clearfieldcountyfair.com, E-Mail: cldffair@penn.com.

- Clinton County Fair, Aug. 2-9, Mackeyville, Phone: (570) 726-4148, Fax: (570) 726-4213, WebSite: www.ClintonCountyFairPA.com.
- Cochranon Community Fair, Aug. 4-9, Cochranon, Phone: (814) 425-2463.
- Crawford County Fair, Aug. 16-23, Meadville, Phone: (814) 333-7400, Fax: (814) 337-0457, WebSite: www.crawfordcountyfair.com.
- Cumberland Ag Expo, Aug. 6-9, Newville, Phone: (717) 240-6500, Fax: (717) 240-6548, E-Mail: blemmon@pa.net.
- Dawson Grange #419 Community Fair, Aug. 4-9, Dawson, Phone: (724) 736-2943.
- Dayton Fair, Aug. 11-16, Dayton, Phone: (814) 257-8332, Fax: (814) 257-8278, E-Mail: daytonfairpa@alltel.net.
- Denver Fair, Sept. 9-13, Denver, Phone: (717) 336-4072, Fax: (717) 336-4717, E-Mail: reshleman@de-jazzd.com.
- Derry Township Agricultural Fair, July 6-12, New Derry, Phone: (724) 694-2175, Fax: (724) 459-9566, E-Mail: derrytwpagfair@yahoo.com.
- Dillsburg Community Fair, Oct. 14-18, Dillsburg, Phone: (717) 432-7361, WebSite: www.dillsburg-farmersfair.org.
- Elizabethtown Fair, Aug. 18-23, Elizabethtown, Phone: (717) 367-0508, Fax: (717) 367-8883, WebSite: www.pafairs.org/etownfair, E-Mail: Etownfair@pafairs.org.
- Elk County Fair, Aug. 5-9, Kersey, Phone: (814) 885-8376.
- Ephrata Fair, Sept. 23-27, Ephrata, Phone: (717) 733-4451, E-Mail: almtax@aol.com.
- Erie County Fair, Aug. 10-16, Wattsburg, Phone: (814) 739-2232, Fax: (814) 739-9747, WebSite: www.paeriecofair.org.
- Fayette County Fair, July 24-Aug. 2, Dunbar, Phone: (724) 628-3360, Fax: (724) 628-3884, WebSite: www.fayettefair.com, E-Mail: questions@fayette-fair.com.
- Findlay Township Fair, Aug. 14-16, Clinton, Phone: (724) 695-0500, Fax: (724)

- 695-1700, WebSite: www.findlay.pa.us, E-Mail: findlaytwp@mindspring.com.
- Franklin County Fair, Aug. 17-23, Chambersburg, Phone: (717) 369-4100, Fax: (717) 762-6713, WebSite: www.FranklinCountyFair.org.
- Fulton County Fair, Aug. 17-23, McConnellsburg, Phone: (717) 485-5730.
- Gettysburg Fair, May 16-18, Gettysburg, Phone: (717) 334-7724, Fax: (717) 334-5188.
- Goshen Country Fair, July 28-Aug. 2, West Chester, Phone: (610) 430-1555.
- Gratz Fair, Sept. 14-20, Gratz, Phone: (717) 365-3441, Fax: (717) 365-7369, WebSite: www.pafairs.org/gratzfair, E-Mail: GratzFair@pafairs.org.
- Green Township Community Fair, Sept. 8-13, Cookport, Phone: (724) 254-4613.
- Greene County Fair, Aug. 1-9, Waynesburg, Phone: (724) 627-9160, E-Mail: greenecountyfair@alltel.net.
- Greene-Dreher-Sterling Fair, Aug. 26-Sept. 1, Newfoundland, Phone: (570) 676-4047, Fax: (570) 676-5810, WebSite: www.gdsfair.com, E-Mail: gdsfair@yahoo.com.
- Harford Fair, Aug. 18-23, Harford, Phone: (570) 434-4300, Fax: (570) 434-4310, WebSite: www.harfordfair.com, E-Mail: hfair@nep.net.
- Harmony Grange Fair, Sept. 16-20, Westover, Phone: (814) 743-6716, Fax: (814) 743-6280.
- Hollidaysburg Community Fair, Oct. 6-9, Hollidaysburg, Phone: (814) 695-2179, E-Mail: mhiltax-gra@aol.com.
- Hookstown Fair, Aug. 19-23, Hookstown, Phone: (724) 573-4512, Fax: (330) 385-2122, WebSite: www.hookstownfair.com, E-Mail: info@hookstownfair.com.
- Huntingdon County Fair, Aug. 10-16, Huntingdon, Phone: (814) 643-4452, Fax: (814) 643-6982, E-Mail: JimandBarbara621@aol.com.

- Indiana County Fair, Aug. 25-30, Indiana, Phone: (724) 465-6703.
- Jacktown Fair, July 15-19, Wind Ridge, Phone: (724) 428-3637.
- Jamestown Community Fair, Sept. 2-6, Jamestown, Phone: (724) 932-5257, Fax: (724) 932-5142, E-Mail: djv@archgate.net.
- Jefferson County Fair, July 13-19, Brookville, Phone: (814) 265-0640, Fax: (814) 265-8557, WebSite: www.jeffcofair.com, E-Mail: jimgrant@penn.com.
- Jefferson Township Fair, July 22-26, Mercer, Phone: (724) 662-3310.
- Juniata County Fair, Aug. 30-Sept. 6, Port Royal, Phone: (717) 527-4414, Fax: (717) 527-2200, WebSite: www.juniatacountyfair.com, E-Mail: info@juniatacountyfair.com.
- Kempton Country Fair, June 12-14, Kempton, Phone: (610) 756-6444, Fax: (610) 298-8719.
- Kimberton Community Fair, July 21-26, Kimberton, Phone: (610) 933-4566, Fax: (610) 935-4315, WebSite: www.kimbertonfair.org.
- Kiwanis Wyoming County Fair, Aug. 27-Sept. 1, Meshoppen, Phone: (570) 836-5502, Fax: (570) 996-0185, WebSite: www.wyomingcounty-fair.com, E-Mail: Pirone@epix.net.
- Kutztown Fair, Aug. 11-16, Kutztown, Phone: (610) 683-7696.
- Lawrence County Fair, Aug. 11-16, New Castle, Phone: (724) 654-7745, Fax: (724) 654-8772.
- Lebanon Area Fair, July 26-Aug. 2, Lebanon, Phone: (717) 273-3795, Fax: (717) 273-3670, WebSite: www.LebanonAreaFair.com.
- Luzerne County Fair, Sept. 3-7, Dallas, Phone: (570) 675-FAIR, Fax: (570) 675-2537, WebSite: www.luzerne-countyfair.com.
- Lycoming County Fair, July 10-19, Hughesville, Phone: (570) 584-2196, Fax: (570) 584-4955, WebSite: www.lycomingfair.com, E-Mail: secretary@lycomingfair.com.

(Turn to Page A37)

Having nightmares about overflowing manure??



**Do you need more manure storage?
Not sure where its going to go?**

Team Ag Engineers can help with innovative ways to manage manure.

Call us today for help with:

- Grants • Design of Manure Management Systems
- Composting • All kinds of Manure Storage Systems
- Methane Gas Digesters

717-721-6795



901 Dawn Avenue, Ephrata, PA 17522

**Graystone
Small
Animal
Sale LLC**

(Root's Market - Manheim, PA)

**Every Tuesday
4:30 pm**

Receiving 6 am till sale time
All kinds of Poultry, Rabbits,
Guinea Pigs, Pigeons

717-898-0755

the *onmat* system... - A Proven Success

Our *Dry-Trak*™ surface provides your livestock with optimum traction and movement, achieved through the proper balance of mat thickness and durometer (indentation or imprinting) as well as

- high grade input materials.
- exclusive interlock design.
- specialized Pro-Slider™ cleaning equipment.
- Slat-Lok™ non invasive anchors for slatted floors.

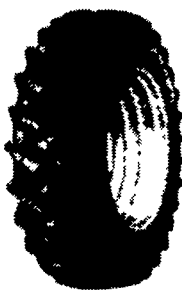
COMPONENTS OF A PROVEN SYSTEM

Gary Johnson
Box 154 Church St
Springville Pa
(570)965 2613

onmat
www.animatonline.com
folkema@sympatico.ca

**TOTAL
INTERLOCKED
RUBBER
FLOORING**

MARTIN'S TIRE & ALIGNMENT



**We're Your Firestone
Farm Tire Dealer!**

Count on us year-round for:

- A complete line of Firestone farm tires
- In the field emergency repair service
- Implement and light truck tires in stock too!

Many Other Tires In Stock - Call For Prices

FARM TIRES

Traction Field & Road	Firestone All Traction 23°	Firestone Radial 23°
13 6 x 28 6 ply \$205.00	18 4R34 1★ \$550.00	18 4R34 1★ \$515.00
18 4 x 30 6 ply \$350.00	20 8R38 1★ \$735.00	18 4R38 1★ \$540.00
18 4 x 38 6 ply \$370.00	20 8R38 2★ \$840.00	20 8R38 1★ \$685.00
20 8 x 38 8 ply \$530.00	20 8R42 2★ \$880.00	18 4R42 2★ \$670.00

Visit or call us today!

**MARTIN'S TIRE &
ALIGNMENT**

Located in Churchtown
119 Water St., Narvon, PA 17555

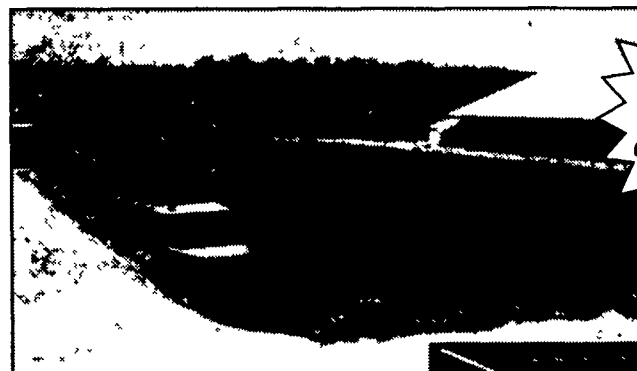
717-445-4993



THE LEADER IN THE FIELD

SITE EXCAVATION

Installation of H.D.P.E. Liner Systems for:
Dairy, Hog, and Veal Manure Storage Facilities
Golf Course and Recreational Ponds



**New,
Expanding
or Existing
Operations
Call For Free
Estimates**

FEATURES:

- 60 mil thick H.D.P.E. Liner
- Geotextile underlayment
- Leak detection system
- Economical Manure Storage
- Seals manure in, subsurface water out
- Concrete ramp for manure agitation and pumping

MANADA CONSTRUCTION CO.

1942 Camp Swatara Road • Myerstown, PA 17067

Ph: (717) 933-8853 • Fax:(717) 933-8078