

Harrisburg Hosts America's Largest Indoor All-Breed Horse Show

HARRISBURG (Dauphin Co.) — Last fall, the Farm Show Complex hosted the first show of the indoor circuit, the Pennsylvania National Horse Show.

The show, which accepts 1,100 to 1,200 of North America's exceptional horses and

riders, is America's largest indoor all-breed horse show.

Hunters and jumpers, American Saddlebreds and Hackney ponies, draft horse hitches, western horses, roadster horses, and ponies all have their time in the spotlight during the competition.

Eleven national championships are decided at the show.

For the 2002 show, prize money for several classes was increased, bringing the total monies offered to \$325,000.

The event's highlight was the \$60,000 Budweiser Grand Prix de Penn National on Saturday night, Oct. 19. The event drew North America's top horses and riders, including many Olympic and World Cup veterans.

Juniors also compete at the show. The USA/BET National

Junior Jumper Team Championship is one of a handful of USA Junior Olympics-Equestrian events.

Saddlebred numbers and depth increased dramatically as the National Horse Show finals were conducted in Harrisburg for the first time, drawing competitors in all Saddlebred divisions from across the country.

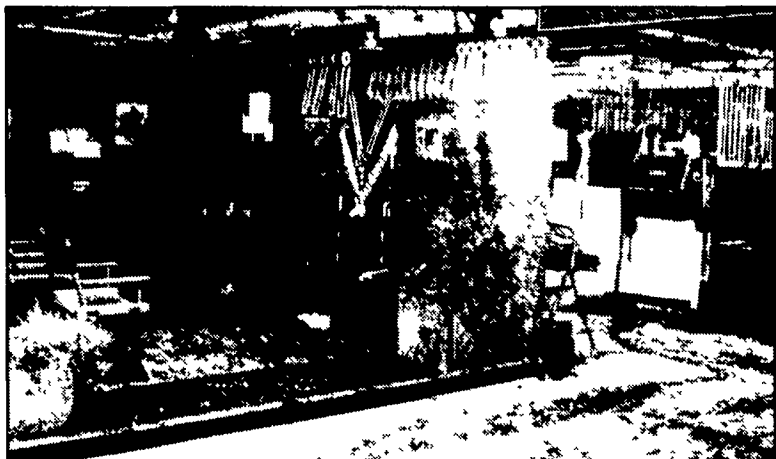
The show also hosted international contestants, with amateur and professional competitors from Germany,

Bermuda, Brazil, Canada, and Ireland.

Exhibitors in the event housed their horses in the new 140-stall horse barn and the just-completed 1,700 seat indoor arena, which provided a much needed exercise area out of the often inclement weather.

"The future of the Pennsylvania National Horse Show has never looked brighter," president Elizabeth Shorb said. "In 2003 we will present

(Turn to Page E7)



Areas of the complex were transformed by elaborate displays by the visiting farms.

Photos by Michelle Kunjappu



Amy DeVisser, Cazenovia, N.Y., readies "Puma" for a speed class.



Stephanie Baldez, left, Dover Plains, N.Y., and Susan Braund, Westport, Conn., are joined by horse Kenwi, and dogs Lily, Cyrrus, and Magnum as they relax in the barn.



More time to ride

A Millcreek mini-spreader will save you up to 8 minutes per stall every time you clean. No more wheelbarrow. No more manure piles. Your garden tractor or ATV pulls a Millcreek mini-spreader right to the stall. Load it. Spread it. Job's done, and you've got more time to ride.



Brodhecker Farm
2 Branchville Lawson Road
Newton, NJ 07860
973-383-3592



**Introducing:
Superior Ironmaster**
Bay Homozygous
Tobiano Stallion
Guaranteed Color
Or your money back!

Contact:
Dave & Dolly Hass
1265 Mapledale Rd
Elizabethtown, PA 17022

**OPEN HOUSE
APRIL 12TH & 13TH**

Double D Stables
Breeding - Boarding
Sales - Lessons
Home of Superior Hobby
Proven APHA Stallion
New Modern Boarding Center
Convenient Location
Plenty of Trail Riding
Very Close to Rails to Trails
Indoor Arena
Hot-Cold Wash Stall
Daily Turnout in Lush Pastures
Visit: www.double-dstable.com



717-367-2053