



00 Mitsubishi FH
w/20 ft. Produce Box, CDII Max ThermoKing, 6 Cyl. Turbo Diesel, 6 Sp., A/C, 17,995 GVW, 24,900 Mi., #4442



1997 Ford E450 Superduty Turtle Top, 21-Passenger w/Wheelchair Lift. 7.3L Powerstroke Dsl., Rear Air Conditioning, 14050 GVW, 66,800 Miles, White. #4380



99 Ford F550 4WD Krystal, 25-Passenger Bus, 7.3 Powerstroke Diesel. Rear Air. Power Door, Full Interior Trim, Entertainment System. Rear Luggage Storage. 43,000 Mi.



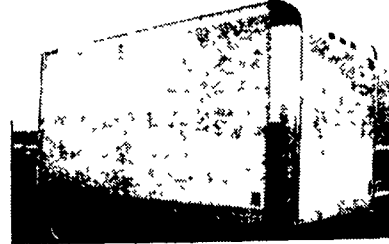
2001 Pete 379 Ext Hood Day Cab Heavy Hauler
475 Cat w/Jake, 18 Spd, 46000# Rears w/full lockers on Air Trac Suspension, 12860# Front, 241 WB 4.33 Ratio, (10) alum wheels w/11R24.5s, new drive tires, dual stacks and breathers, 3 line wet kit w/split tank, 241 000 miles balance of warranties, dark green

30/40 Four Way Auto Sales

Rt. 23, New Holland, PA
717-354-3199
Toll Free 1-877-999-8267

Used Truck Bodies

SPECIAL 1998 24' Kidron Aluminum Body

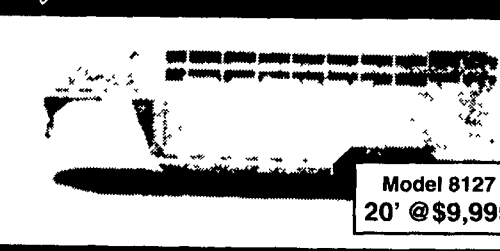


Installed on NEW or Old Truck
"Makes your Old Truck Look Like NEW!"

• Dry Van Bodies 10' to 28' • Reefer Bodies • Flat Bodies (Completely Refurbished Bodies in Most Cases)
Same Day Service!

Phone 717-664-1696
CHARTER ENTERPRISES, LTD.
270 Hostetter Road, Manheim, Pa

FEATHERLITE TRAILERS



Model 8127
20' @ \$9,995

STAR TRANSPORTERS

717-859-7010 800-651-4171
4170 Oregon Pike, Ephrata, PA 17522

- 1991 International Van, 20' Box with lift gate, DT-466 - 5&2 Transmission, GVW 25,000 Under CDL, Excellent Condition, Air Brakes** \$12,500
- 1988 GMC Tanker, Aluminum Tank 3 Compartment, 2500 Gallons, Pump, Meter Hose Reel, Nozzle, Ready To Run, Cat 3208 Diesel** \$14,500
- 1987 International Van Tanker, 24' Van Body with Two 500 Gallon Tanks Pumps, Meter, Hose Reel, PTO Driven, Can Be Used For Diesel or Lube Oils, DT 466 Engine 5 & 2 Transmission, Lift Gate, Great Lube Truck, 33,000 GVW.** \$9,500
- 1989 International Van, DT 466 Engine, Lift Gate, 5 & 2 Transmission, 28,000 GVW Disc Brakes**..... \$8,500

LUBECO INC.

1266 Sans Souci Parkway
Hanover Township, PA 18706
800-222-1838 • 570-824-5724

Meadowbrook Auto Sales
875 Abbottstown Pike, Hanover, PA
717-632-9600 717-633-5789



1997 Ford F-350 Crew Cab XLT
4x4, 7.3 Powerstroke Diesel Automatic, PS, PB, Air Cond, PW, PDL, Tilt Wheel, Cruise Control, 138,000 Miles
Only \$19,900



1999 GMC 12 Ft. Stakebody
350 V-8, Automatic, Air Cond, PS, PB, Tilt Wheel, Cruise Control, Dual Rear Wheels, 79,000 Miles
Only \$12,900



2002 Chevrolet G-15 Cargo Van
4.3 V-6 Automatic Air Cond PS PB 17,000 Miles
Only \$15,900



1999 GMC Crew Cab
4x4, V-8, 350 A T PS PB A/C, Tilt Cruise Control, 78,000 Miles
Only \$17,900



1997 Dodge Ram Ext. Cab
Dually 4x4 6 Cyl Cummins Diesel Automatic PS PB Air Cond PW PDL Tilt Wheel Cruise Control High Miles and Very Well Maintained
Only \$17,900



1994 Ford F-250 XLT
4x4, V-8 351 A T PS PB Air Cond, Tilt Wheel Cruise Control, 99 000 Miles
Only \$9,900



1995 Chevrolet K-1500
Stepside 4x4, 350 V-8 Auto Air Cond PW PDL Tilt Wheel, Cruise Control 45,000 Miles
Only \$11,700



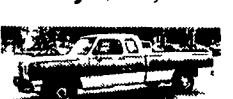
1992 Ford F-250 Utility Truck
351 V-8 5-Speed PS, PB Air Cond, Great Condition 93 000 Miles
Only \$6,300



1999 Chevrolet C-3500 Utility Truck
6.5 Diesel, Automatic PS, PB, Air Cond, Dual Rear Wheels, Super Nice Truck 103,000 Miles
Only \$14,900



1988 GMC Bucket/Utility Truck
350 V-8, AT, PS PB 55,000 Miles Runs Super
Only \$7,900



1993 Dodge Ram 2500 Ext. Cab
Cummins Diesel, A T, PS PB Cruise Control Tilt Wheel PW, PDL 92,000 Miles
Only \$7,900



1994 Ford F-250 Ext. Cab
7.3 Turbo Diesel, Automatic, PS, PB Air Cond, Cruise Control Tilt Wheel, PW PDL, 126,000 Miles
Only \$9,900

VW-TDI DIESELS, 45+ MPG



2000 VW Beetle TDI Diesel
5 Spd PS PB A/C PW PDL Tilt CC AM FM Cass 45+ MPG 45 000 Mi
Only \$12,900



2000 VW Jetta GLS TDI Turbo Diesel
4 Cyl Automatic PS PB Air Cond Sunroof PW PDL Tilt Wheel Cruise Control 86 000 Miles
Only \$11,900

Bergey's Dodge WORK TRUCK SALE!

Don't Miss This Big Truck Sale!

All new Dodge trucks come with 7-year or 70,000 mile powertrain warranty in addition to 3-year or 36,000 mile bumper to bumper factory warranty! Cummins diesel engines come with 100,000 mile warranty!

2003 DODGE SPRINTER VANS



TONS OF ROOM!
Diesel Automatic Call for info & availability Feature higher payloads best fuel economy in class low maintenance costs lots of storage space for tools etc!
CALL US FOR MORE INFO!

2002 DODGE RAM 3500 STAKE BODY

SAVE \$6,282!
Stk# L3410 5.9L V8 Auto A/C Anti Spin Differential Stake Body And More!
Price Includes All Discounts Plus Commercial Rebate!
MSRP \$29 725
SALE PRICE! \$23,443



2003 DODGE RAM 1500 CARGO VAN



SAVE \$4,202!
Stk# L3634 2.9L V6 Auto A/C Cassette Side & Rear Door Glass Cloth Seats More! Price Includes \$2 000 Rebate & \$600 Commercial Rebate MSRP \$21 195
SALE PRICE! \$16,993

2003 DODGE RAM 2500 PICKUP 4X4

SAVE \$5,860!
Stk# L3535 5.7L Hemi V8 Auto Meyer Snow Plow A/C Cassette Includes \$1 500 Factory Rebate \$800 Commercial Rebate & Demo Allowance MSRP \$31 580
SALE PRICE! \$25,720



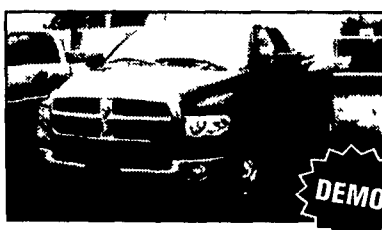
2002 DODGE RAM 2500 PICKUP 4X4



SAVE \$6,274!
Stk# L3419 5.9L V8 Auto A/C Anti Spin Differential Snow Plow Prep & Tow Packages 2500 Reg Cab! Price Includes All Discounts MSRP \$28 585
SALE PRICE! \$22,311

2003 DODGE RAM 3500 QUAD CAB 4X4

SAVE \$5,949!
Stk# L3646 5.9L Cummins HO Diesel 6 Spd SLT PW PL PS A/C Fog Lamps Tow Pkg Duale 4 Door! Price Includes \$1 500 Rebate & Demo Allowance MSRP \$40 120
SALE PRICE! \$34,171



ALL PRICES INCLUDE FREIGHT, DEALER PREP, ANY APPLICABLE FACTORY REBATES & FACTORY EQUIPMENT DISCOUNT PACKAGES (IF APPLICABLE). COUPONS, AND BERGEY'S DISCOUNT TAX, LICENSE & DOCUMENT FEES COST EXTRA. SEE BERGEY'S FOR COPY OF LIMITED POWERTRAIN WARRANTY. PRIOR DEALS EXCLUDED. VEHICLES SHOWN FOR ILLUSTRATION PURPOSES ONLY. NOT RESPONSIBLE FOR TYPOGRAPHICAL ERRORS. SEE BERGEY'S FOR DETAILS.

HURRY, SALE ENDS MARCH 31, 2003!

Bergey's AUTOMOTIVE EXCELLENCE SINCE 1924

FIVE STAR BUSINESSLINK

www.bergeys.com
dodgemail@bergeys.com

1201 N. BROAD ST.
LANSDALE, PA 19446
Ask For Carl or Jim When You Call!

215-855-9061
TOLL FREE 1-888-855-9061

HOURS: M-F (9A - 9P) SAT (9A - 4P)
Just off Fort Washington Exit 26 of PA Turnpike (I 276) Follow Rt 309 North to Colmar Turn left at traffic light onto N Broad St Yum Yum Bakery and Bergey's Used Cars & Trucks located on corners at traffic light

www.meadowbrookauto.com