

Diesel Engine Service

13 Pleasant Valley Road • Ephrata, PA 17522
 PHONE: 717-733-3890 • FAX: 717-738-3146

JOHN DEERE & DETROIT DIESEL



• Engines • Power Units • Generator Sets • Complete Rebuilding • Parts & Service • Rockford & Twin Disc Clutches & Parts •

New JD Powertech Engines 20-500 HP

- 48 HP 271 Detroit Diesel Power Unit Rebuilt **\$4,000**
- 90 HP 371N Detroit Diesel Power Unit Rebuilt **\$6,500**
- (2) 125 HP 471N Detroit Diesel Power Unit 1 Rebuilt 1 Used **Call**
- 470/485 HP Series 60 Detroit Dsl DDEC 3 **\$8,000**
- 110 HP 4BT3 9 Cummins Diesel F/W Engine **\$5,500**
- 80 HP 4045D John Deere Powertech Power Unit New **\$7,200**
- 115 HP 4045T John Deere Powertech Power Unit New **\$9,200**

PA Track & Welding

Track Press Service/ PU & Delivery
 New & Used Parts/Machine Labor

For Sale:

- (1 Set) Cat 941/B Tracks, Turned P&B, Assem w/ 14" 2 Bar Regr Pads **\$1500 Set**
- (1 Set) 6.91 Pitch Tracks, New P&B, Assem w/ 15" 2 Bar Regr Pads **\$1900 Set**
 ** Will Fit Cat 951L/955K/955L JD-655/755
- (1 Set) Cat D-6H Series II, Track groups, 50% Just Turned & Relubed, 22" HD Pads **\$2500 Set**
- (1 Set) FL-10C Tracks, Turned P&B w/15" Loader Pads **\$1400 Set**
- (1 Set) JD- 440/1010/2010 Tracks, New P&B, Loader Pads w/Recessed Bolt Heads **\$1000 Set**
- (1 Set) JD- 350/B Loader Track Groups, New P&B w/12" 3 Bar Pads **\$950 Set**
- * JD-450/550 New B Rollers - \$100 Each
 New Front Idlers - \$415 Each
 New Sprockets - \$140 Each

Call 1-888-387-2510 or (814) 383-2510 For More Info.



\$13,500
 1987 Case 580 Super E: 4WD Cab Extenda-hoe, 5500 Original Hours 80% Rear Tires Excellent Brakes Good Runner Located in Lanc. City



\$11,000
 1988 JCB T1400B, 4WD Cab Extenda-Hoe Runs and Operates Well Maybe could be painted soon Located in Lanc. City
410-688-2739

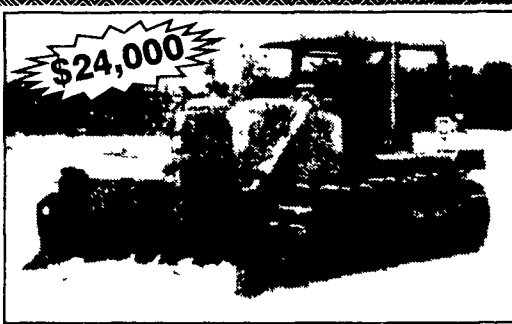
used forklift sales, service & rentals



1996 CAT GCG25, 5000lb, 1996 GC18 3500lb, lpg, 82"-189" lift, Tread Tires, S/S, 3 stage mast, Good Condition, Your Choice, \$6,799

superior lift

used forklift sales, repairs and rentals
 187 east church street
 stevens pennsylvania 17578
 phone 717.336.1698



\$24,000
CATERPILLAR D75 Rear Ripper & Fleco Root Rake
302-856-7018

USED & NEW PARTS PRICED RIGHT

Dismantling Over 650 Machines For Parts

Cat	IHC	Gallon
Case	Michigan	Wabco
John Deere	Hough	Dynahoa
Trojan	Terex	Koehring
Drott	Hein Werner & Others	AC/Fiat Allis

REPAIRS & REBUILDING AT OUR LOCATION. Reliable Service & Exp. Personnel. Call Jim Shelly.

NATIONWIDE PARTS LOCATING SERVICE

In addition to our own large inventory, we have two computerized parts locator services, nationwide & Canada, ready to serve you. In less than a minute, over 600 used & new parts & equipment suppliers will receive your parts request. Parts are located easily & at substantial savings. Try Our Services. **Parts Shipped Anywhere Direct To You.**

All Parts Guaranteed "We Return All Phone Calls"

BALANDA EQUIPMENT, INC.

P.O. Box 407 • Route 29 • Palm PA 18070
 Phone 215-679-3900 • Fax 215-679-8727

TOLL FREE: 1-800-322-8030

- #8808 NH LX565 Uniloader, 1995, Cab w/Heat, 828 Hrs **\$9,500**
- #8809 Case 1835C Uniloader, New Tires & Coupler, 1700 Hrs **\$6,900**
- #8729 Case 580SL Loader Backhoe, 1995, 2 WD, Cab, Ex, 2500 Hrs **\$34,900**
- #8570 Case 580SL Loader Backhoe, 1998, 4WD, Cab AC, Stereo, Ex, 3500 Hrs **\$36,900**
- #8484 Case 580SE Loader Backhoe, 1986, 4WD, Cab, Ext Hoe **\$17,900**
- #8447 Case 580SL Loader Backhoe, 1999, 4WD, Cab, Ext Hoe, 1850 Hrs **\$42,900**
- #8279 Case 580SL Loader Backhoe, 1995, 4WD, Cab, Ex, 2500 Hrs **\$34,900**
- #7975 Case 580SL Loader Backhoe, 1997, 4WD, Cab, Ext AC, 2612 Hrs **\$37,900**
- #7491 Case 1840 Uniloader, 1998, Aux Hyd, Drt Bkt, 1212 Hrs **\$14,500**
- #7870 Case 570LXT Tractor/Loader, 1996, 4 WD, Canopy, 3 Point Hitch, Filled Tires, 2550 Hrs **\$24,900**

Vernon E. Stup Co.

5859 Urbana Pike Frederick, MD 21701

301/663-3185

LTM Equipment Co.

717/949-3582 Myerstown, PA

We buy, sell, and repair used equipment
 Most Trades Accepted



Cat Pneumatic Tire 5,000 lb LP, 86"-132" Mast, Oil Clutch Rebuilt Engine **\$3,500**



Hyster Pneumatic Tire 8,000 lb Diesel Rebuilt Perkins See Through 96 144 Mast Auto **\$5,500**

Also available
 TCM 4 000 lb Pneumatic tire LP Auto **\$4,500**
 AC 8 000 lb Pneumatic tire LP Auto **\$5,500**

1A CONSTRUCTION EQUIPMENT

Cat 941B 8083516, 374 hrs on eng, new trac & carriage, 717 543-0906 eve

Ditch Witch Walk-Behind 1500 elec. start, exc. cond. Hunterdon, 908-730-8100.

Backhoes, 4wd. Wood chippers. Stump grinder. Dsl welder. 302-998-1788

Telescopic forklift JCB 530B, 36ft reach, stabilizers, 4wd, pallet forks, material bkt, \$21,000/obo. 610-682-4160

Cat 951C, #86J5145 cab, ROPS, sweeps, rear screen & 4-in-1 bucket w/75% UC, exc. cond. 814-765-9094 eves or 800-259-6304.

Sam's MECHANICAL SERVICES

Fork Lifts
 Sales New & Reconditioned
 Rental
 Leasing



Specializing In
 Fork Lifts
 Skid Loaders
 Repairs

Coming In: Allis Chalmers 6000 lb 30Ft. Tractor Lift. A-1 Condition

- Used fork lift mast for back of tractors
- Heavy duty fork extensions

Don't throw out or trade that old engine! Have it overhauled for a fraction of the cost of new! All work is guaranteed.

~ Skid Loaders & Fork Lift Rentals ~

5917 Plank Road, Narvon, PA 17555

Call for Sales & On-Site Service

717-442-9334



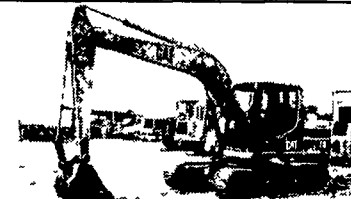
Cat 955H Crawler Loader, Good Condition **\$10,000**



NH 565 99 Case 95XT, 7100 Hrs Call Case 1845C **\$8,200** Case 1840 **\$8,000**



92 Komatsu WA-600 Wheel Loader, 435hp, 7 1/2 yd Bucket Ready to Work **\$35,000**



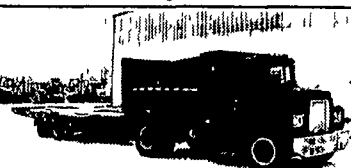
92 Cat 312 Excavator **\$30,000**



Trojan 232 25 Ton 6x6 Haul Truck **\$29,500**
 92 Randon 628 6x6 25 Ton Haul Truck **\$28,000**



Mid-Winter Special
 88 JD 450G, Good U/C 6 Way Blade Rebuilt Engine **\$19,000**



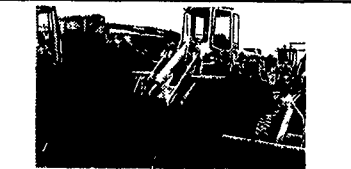
73 Mack U600, Dump Bed Good Rubber **\$6,000**
 18" Tandem Axle Tilt Bed Tag-Along Air Brakes **\$3,500**



92 Terex Haul Truck 3066, Cummins Diesel, Good Condition **\$36,000**



2 Manlifts: JLG 35' Electric **\$5,500**
 98 Conдор 46' Diesel 4x4 **\$10,500**



Ford A64 Wheel Loader, Cab w/Heat **\$14,000**



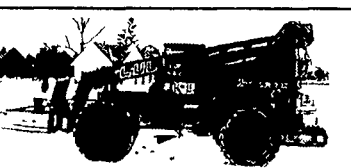
88 Cat 963, OROPS 4 in-1 Bucket **\$28,500**
 88 Cat 963, Cab GP Bucket **\$36,000**
 92 Cat 963, Cab GP Bucket **\$42,000**
 Cat 977L 14X Series **\$19,500**



86 Cat D5H, Good Undercarriage Tight Blade **\$39,000**
 92 Cat D5H XL, Cab 6-Way Blade **\$42,500**



Cat E120B Excavator **\$23,000**
 1991 Hitachi EX120 **\$24,000**



94 Lull 644 Highlander II, 6000 Lb Capacity 34 Reach JD Diesel 48 Pallet Forks w/Tilt **\$28,000**

EQUIPMENT

- Cat EL300 Excavator w/ HYD. Hammer **\$29,500**
- JD 555 Crawler Loader **\$14,000**
- Cat 980B Wheel Loader w/Forks **\$18,500**
- 94 Cat 416B 4x4, Ext. Hoe **\$25,500**
- 94 Bobcat 953 **\$10,000**

PAVING EQUIPMENT

- Mauldin 500 Paver **\$3,500**
- Hyster 350C Roller **\$5,000**
- Case 252 Tandem Vibratory Roller **\$6,500**
- 95 Ingersol Rand BA30 Tandem Vibratory Roller **\$6,500**
- Stone Wolfpack 2500 double drum asphalt roller **\$2,500**

Weaver's Equipment Sales

RD#1, Box 418, Milton, Pa. 17847
 Phone: 570-523-9598