

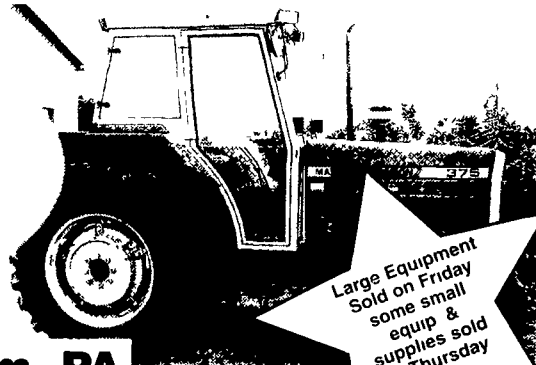
COMPLETE LIQUIDATION

COMPLETE LIQUIDATION



R & D TUCKAWAY TREE FARM

1045 Hopewell Road, Nottingham, PA



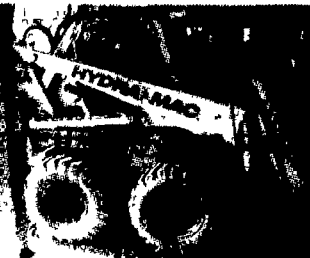
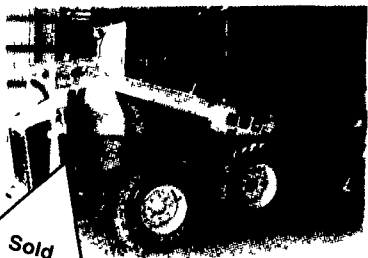
Large Equipment Sold on Friday some small equip & supplies sold on Thursday

HARD TO FIND SPECIALS

85% IN-GROUND STOCK (APX. 30,000 PLANTS)

EQUIPMENT

- 1997 HYDRO-MAC 2650D W/STABILIZER/CW/BUCKET/FORKS
- 1992 MUSTANG 960 W/STABILIZER/CW/BUCKET
- 1994 MUSTANG 960 W/STABILIZER/CW/BUCKET
- MASSEY FERGUSON 375 (64 HP) 4WD/HEAT/AIR CAB/FORKS
- 1986 KUBOTA B6200 4WD (16 HP) 24" VERMEER TREE SPADE (2)
- 32" VERMEER TREE SPADE
- 42" BIG JOHN TREE SPADE
- 34" RED BOSS TREE SPADE
- 45" RED BOSS TREE SPADE
- YANMAR 180D (18 HP)
- DOLMAR CHAINSAWS
- RED MAX 2600 BRUSHCUTTERS
- SCOTT'S YARDMEN PUSH MOWERS
- BUSH HOG MOWERS (3)
- TRUCK MOUNT SPRAYER (400 GAL) PUMP MOTOR/2 HOSES/ELEC REELS
- BIERTOE SPRAYER (3 PT HITCH) 104 GAL
- SMALL SKID SPRAYER (350 GAL) PUMP MOTOR/HOSE/ELEC REEL
- 1000 GAL WATER TANK/HONDA PUMP
- 400 GAL WATER TANK/HONDA PUMP (2)
- SHOP EQUIPMENT
- 3 PT AUGER
- SKID MOUNT AUGER
- TRU TRANSPLANTER
- BASKET/BURLAP INVENTORY
- BACK PACK SPRAYERS (4G) 6



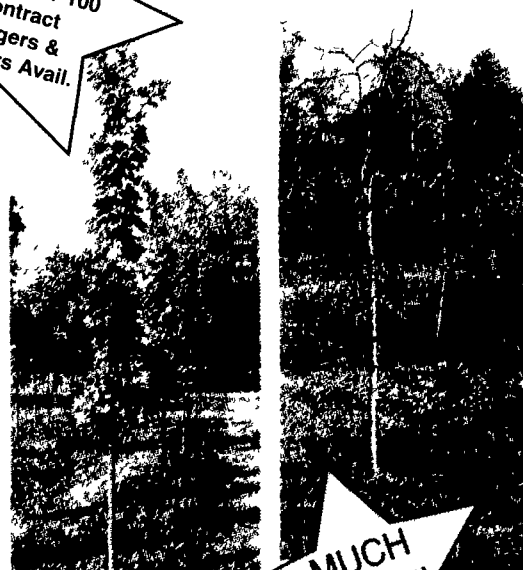
Sold in Lots of 1-100 Contract Diggers & Haulers Avail.

VEHICLES

- 1977 CHEVY P/O 1 TON (350) DUALY - STAKE BODY
- 1986 GMC TOPKICK (3208 CAT. 10 SP) 33,000 SGWV, 27 ROLLBACK BED
- 1987 F700 FORD (10 SP 6 CY DIESEL) NEW ENGINE, 1 YEAR OLD, 2000 STAKE BODY W/HOIST & PTO
- 1987 FORD 250 (6 C)
- 1988 FORD (DUALY) F350 158,217
- SOUTHERN TRAILER 9,999 GROSS WT.
- TEX/BRAGG TRAILER 7,000 GROSS WT.



MUCH MORE!!



CALL FOR A COMPLETE FLYER WITH INVENTORY, TERMS, DIRECTIONS, ETC.

www.nurseryauction.com

