

(Continued from Page A2)

Lancaster County Weekly Cattle
New Holland, Pa.
Report Supplied By USDA
Friday, March 7, 2003

	CATTLE	CAI VES
THIS WEEK	2680	1765
LAST WEEK	2670	2014
LAST YEAR	2382	1719

Compared to last week, slaughter steers sold 50-100 lower on the two early week runs, with prices trending a full 100-300 lower to close out the week. Most producers and buyers have been keeping a close eye on the CME live cattle futures as we look ahead at the summer months. And many held a small hope that the Board would adjust itself to the cash trade like it had done all winter. Instead the Western feedyards moved their steers at mostly 77 00 this week, which is a full 200-300 lower, and in turn set the tone for the rest of the country. Needless to say, the next few months look very bearish as the April contract closed at 74 60 on Thursday, with the June and August contracts at the Merc settling from 66 80-69 67 respectively. Most producers in Lancaster County will be hitting the calculator pretty hard over the months to come, once again figuring breakevens instead of being able to bank on the 78 00-81 00 steer market they were beginning to become accustomed to. However, it is also important to note the lower quality of the runs in the county this week. The bulk of the snow is melting off very rapidly as rains continue to fall. Therefore cattle are coming through the barns with a good amount of mud and fill on them, with buyers discounting accordingly. The buyers trying to send the high Choice and Prime quality cattle to their Kasher kills had a tough time getting much of anything put together this week, as despite the mud and fill the finish wasn't there either. Holstein steers sold weak to fully 100 lower. Holstein demand is still there, it is just hard for the spotted stock to overcome the pressure being put off by the slaughter steers and heifers. Slaughter heifers sold with a lower undertone on the mixed runs. Slaughter cows opened up the week trending weaker, only to turn around on another outstanding late week run to trade a full 100-200 higher. Buyer attendance was key this week as usual, and when the cow cutout value was higher and the buyers were there, demand was excellent. This week's reported supply included 38 percent steers, 6 percent heifers, 46 percent cows, 4 percent bulls, with the balance feeder cattle.

SLAUGHTER STEERS High Choice and Prime 2-3 1380-1565 lbs 61.75-67.00, average 64.60. Choice 2-3 1260-1575 lbs 59.75-63.00, average 61.08. Select and low Choice 2-3 1235-1550 lbs 56.75-60.75, average 58.63. Select 1-2 1190-1510 lbs 52.85-57.75, average 55.57. Couple Standard 1-2 1275 lbs 48.00.

SLAUGHTER HEIFERS: Choice 2-3 1150-1385 lbs 73.00-75.75, average 74.89. Select and low Choice 2-3 1140-1320 lbs 70.75-74.75, average 72.33. **SLAUGHTER COWS:** Breakers 70-75 Over 1400 lbs 43.00-49.00, 37.50-43.00. Boners 75-80 Over 1200 lbs 39.25-44.25, 36.00-39.50. Lean (Hi-Yield) 80-85 Over 1200 lbs 38.25-41.00, 35.00-38.75. Lean 85-90 Over 1000 lbs 36.25-40.00, 32.00-35.50 up to 41.50. Lean (Light-Wt) 85-90 750-1000 lbs 32.00-35.75, 26.50-31.75.

SLAUGHTER BULLS Yield Grade 1 1170-2240 lbs 50.50-59.25, average 53.75, high dressing up to 62.25, few low dressers 46.75-47.75. Yield Grade 2 1290-2160 lbs 45.25-53.00, average 48.19, few fed bulls 55.00-57.50. Bullocks Couple Select 1-2 1305-1525 lbs 60.50-62.00.

CALVES Compared to Tuesday, slaughter calves sold 200-500 lower. Holstein bull calves going into veal barns sold mixed. Number One graded bulls sold 100-300 higher, with Number Two bulls trading 100-200 lower. Holstein heifers sold with a firmer undertone. There were 364 head in the state graded sale, with an estimated 82 percent of the graded run going back on feed.

SLAUGHTER CALVES Utility 60-110 lbs 15.00-30.00.

RETURNED TO FARM Graded Number One Holstein Bulls 90-125 lbs 132.00-185.00, 80-90 lbs 122.00-130.00. Graded Number Two Holstein Bulls 90-125 lbs 105.00-149.00, 80-86 lbs 75.00, 76-78 lbs 40.00. Holstein Heifers 95-125 lbs 280.00-380.00, 90 lbs 300.00-330.00, 85 lbs 200.00, 75-80 lbs 110.00-180.00. Plainertype Heifers 95-125 lbs 150.00-260.00, 90 lbs 100.00-260.00, 80-85 lbs 120.00-145.00, 70-75 lbs 60.00-90.00.

SHEEP AND LAMBS Compared to Monday, all classes sold steady near steady.

SLAUGHTER LAMBS Choice, few Prime 2-3 few 130 lbs 113.00.

SLAUGHTER SHEEP Good and Choice yearlings and two year olds 45.00-78.00. Utility and Good 2-3 115-165 lbs 45.00-67.00, 175-195 lbs 37.00-41.00.

GOATS Due to the light end of the week run all prices quoted below are carried over from Monday's auction. All goats are sold on a per head basis, with estimated weights.

Kids Selection 1 20-40 lbs 42.00-54.00, 40-60 lbs 54.00-66.00, 60-80 lbs up to 86.00. Selection 2 20-40 lbs 36.00-44.00, 40-60 lbs 46.00-58.00. Selection 3 20-40 lbs 20.00-38.00.

Yearlings Selection 1 60-80 lbs 62.00-76.00, few 80-100 lbs 75.00-90.00. Selection 2 and 3 60-80 lbs 42.00-62.00.

Nannies Selection 1 70-100 lbs 80.00-88.00, 100-150 lbs 89.00-117.00. Selection 2 50-70 lbs 56.00-70.00, 70-100 lbs 70.00-79.00, 100-150 lbs 78.00-90.00. Selection 3 50-70 lbs 48.00-60.00, few 70-100 lbs 62.00-66.00, 100-150 lbs 58.00-76.00.

Billies Selection 1 70-100 lbs 96.00-124.00, fancy up to 130.00, 150-250 lbs 124.00-175.00, outstanding individual 198.00. Selection 2 70-100 lbs 66.00-80.00, 100-150 lbs 88.00-100.00, 150-250 lbs 96.00-123.00. Selection 3 few 100-150 lbs 68.00-90.00.

Wethers Few 60 lbs 67.00, 70-100 lbs 88.00-102.00, 100-175 lbs 104.00-134.00.

CALF SUMMARY Compared to last week, slaughter calves sold very mixed when comparing day to day trends, however prices continue to remain right in the 20.00-35.00 range. Holstein bull calves going into special fed veal barns sold steady to weak in the early week rounds. With late week demand fluctuating as buyers were in hot pursuit of the better quality bulls as prices were as much as 30.00 higher, at the same time Number Two bulls sold as much as 20.00 lower. Holstein heifers sold with a weaker undertone early in the week, with good late week demand allowing heifers to trend firmer to close out the week.

SLAUGHTER CALVES Standard and Utility 60-135 lbs 15.00-35.00, weaker 10.00-15.00.

CALVES GOING INTO SPECIAL FED VEAL BARN.

Monday- Holstein Bulls 95-125 lbs 115.00-142.00, 90 lbs 90.00-125.00, 80-85 lbs 95.00-120.00. Plainertype Holstein Bulls 95-125 lbs 100.00-125.00. Light test of Plainertype Holstein Heifers 90-100 lbs 210.00-290.00.

Tuesday- Graded Number One Holstein Bulls 90-125 lbs 120.00-157.00, 80-85 lbs 142.00-147.00. Graded Number Two Holstein Bulls 90-125 lbs 125.00-137.00, one 20 head package 90.00, 83-84 lbs 70.00-80.00. Graded Number One Holstein Heifers 90-115 lbs 350.00-360.00, package 85 lbs 250.00. Graded Number Two Holstein Heifers package 90-105 lbs 220.00-290.00, package 82 lbs 220.00, package 74 lbs 135.00.

Thursday- Graded Number One Holstein Bulls 90-125 lbs 132.00-185.00, 80-90 lbs 122.00-130.00. Graded Number Two Holstein Bulls 90-125 lbs 105.00-149.00, 80-86 lbs 75.00, 76-78 lbs 40.00. Holstein Heifers 95-125 lbs 280.00-380.00, 90 lbs 300.00-330.00, 85 lbs 200.00, 75-80 lbs 110.00-180.00. Plainertype Heifers 95-125 lbs 150.00-260.00, 90 lbs 100.00-260.00, 80-85 lbs 120.00-145.00, 70-75 lbs 60.00-90.00.

Indiana Livestock Auction
Homer City, Pa.
Thursday, March 6, 2003
Report Supplied By PDA

CATTLE: 110 STFRS STANDARD 1-2 FEW 53.00, 61.00.

HEIFERS: STANDARD 1-2 46.25, 47.75.

COWS: BREAKERS 75-80% LEAN 40.50, 44.25. BONERS 80-85% LEAN 38.00, 43.00. LEAN 85-90% LEAN 31.00, 37.00. SHELLS 30.50 AND DOWN.

BULLS: YIELD GRADE 1 995/1510 LBS. 49.00, 54.25. YG 2 945/1460 LBS 44.50, 48.25.

FEEDER CATTLE: HEIFERS: FEW M-1 305/455 LBS. 61.00, 77.00. L-2 740/920 LBS. 44.50, 59.00. BULLS: FEW L-3 460/820 LBS. 35.00, 50.00.

CALVES: 86. STANDARD & GOOD 75/110 LBS. 35.00, 65.00. UTILITY 55/95 LBS. 20.00, 30.00. FARM CALVES: NO. 1 BULLS 85/130 LBS. 107.50, 157.50. NO. 2 BULLS 80/120 LBS. 75.00, 110.00. NO. 1 HEIFERS 108 LBS. ONE AT 330.00. NO. 2 HEIFERS 80/105 LBS. 140.00, 210.00. BEEF CROSS BULLS AND HEIFERS 75/110 LBS. 80.00, 140.00.

HOGS: 15 45-50% LEAN 245/255 LBS. 40.75, 43.50. LITF 40-45% LEAN 210/280 LBS 33.00, 36.75. US 1-3 410 & 425 1 BS. 20.00 & 21.00. 1-3 590 & 638 1 BS. 24.25 & 26.75. BOARS 586 & 702 LBS 11.75 & 12.00.

FEEDER PIGS: NO MARKET TEST.

SHEEP: NO MARKET TEST.

GOATS: NO MARKET TEST.

Pennsylvania Livestock Auction
Waynesburg, Pa.

Thursday, March 6, 2003
Report Supplied By Auction

CATTLE STOCK COWS: 34.50-48.00

SLAUGHTER COWS: Utility & Commercial 37.00-44.00; Boner & Boning Utility 31.00-36.00, Cutter & Boning Utility 30.00-34.00; Canner & Low Cutter 30.00-33.50; Shells 29.00 & down.

BULLS YIELD GRADE 1 1500#-2000# 39.00-52.00; YIELD GRADE 2 1000#-1400# 38.00-51.00

FEEDER STEERS: M & L 1 300-500# 80.00-87.00, 250-280# 80.00-90.00; M 600-900# 55.00-85.00.

HEIFERS: M 1 & L 1 300-500# 68.00-81.00; L 1 400-650# 60.00-78.00.

BULLS: M & L 1 300-620# 70.00-87.00.

CALVES: Veal Prime 70.00-85.00; Choice 60.00-84.00; Good 35.00-70.00; Farm Calves #1 Holstein Bulls 90-120# Few 35.00-115.00; #2 Holstein Bulls 80-100# Few 10.00-50.00; Beef — Bull & Hfrs./Hd. 35.00-90.00.

HOGS: Barrows & Gilts #1-2 210-255# 35.00-42.00; #2-3 255-280# 40.00-45.00;

Sows #1-3 300-500# 25.00-33.00; Feeder Pigs 1-3 15-20# 5.00-22.00/Hd. 1-3 25-35# 10.00-23.00/Hd.

LAMBS: High Choice 80-100# 77.00-111.00; Choice 40-75# 75.00-135.00; Feeder Lambs Good 50.00-95.00, Sheep 26.00-47.00, Fat Sheep 30.00 and down.

GOATS: Large 45.00-128.00/Hd., Medium 30.00-67.00/Hd., Small 10.00-30.00/Hd.

HORSES: Horses 19.00-51.50; Ponies 20.00-48.00



Jersey Shore Livestock Market, Inc.
Jersey Shore, Pa.

Report Supplied By Auction
Thursday, March 6, 2003

RETURN TO FARM CALF 100 00-350.00.

GOOD VEAL. 75.00-99.00.

COMMON VEAL: 10.00-74.00.

CHOICE STEFRS. 72.00-75.00.

SELECT STEERS. 65.00-71.00

COMMON STEERS: 60.00-64.00

COMMERCIAL COWS: 38.00-44.00

CANNERS/CUTTERS 34.00-42.00

SHELLS: 24.00 TO 33.00

CHOICE HEIFERS: 72.00 TO 74.00

SELECT HEIFERS: 65.00-71.00.

COMMON HEIFERS: 40.00-64.00

GOOD FEEDERS: 60.00-70.00.

COMMON FEEDERS: 30.00-60.00.

BULLS. 44.00.

SEALED BID SALE
PHOTO IMAGING EQUIPMENT
Durst Lambda 130 Laser, Laminators
TUESDAY, MARCH 18
11 A.M.

Colorgraphics
2400 West Westmoreland Street
Philadelphia, PA
Inspection: By Appointment Only
25% Deposit Cashier's Check to be submitted with bid
10% Buyer's Premium on all purchases
Bids are to be sent to the auction office
For sealed bid kit and equipment list visit our website @ www.comly.com or call auctioneer

Established in 1834
COMLY Auctioneers
W. M. F. COMLY & SON, INC.
1825 East Boston Avenue, Philadelphia, PA 19125
(215) 634-2500 • FAX (215) 634-0496
PA Auctioneers License No. RY000087-L
e-mail: auctions@comly.com website: www.comly.com

Witman Auctioneers, Inc
Charles L. Greer

ABSOLUTE PUBLIC AUCTION
"Everything Selling to the Highest Bidder"
• Valuable 3.5 Acre Tract Of land •
Logging Equipment • Truck • Trailers
• Office Building • Storage Shed

MONDAY 10:00 A.M. R. E. 11:00 A.M. APRIL 7, 2003

Small Auction - Be Prompt!!!

Located at: 167 Pilottown Road Peach Bottom, PA (Wakefield Area) Fulton Township, Lancaster County

REAL ESTATE FEATURES: Approximately 3.5 Acre Tract of Land with potential subdivision. Parcel #1 Approximately 1.5 Acre with driveway. Entrance off Pilottown Road, septic tank. Parcel #2 Approximately 2 Acres with driveway entrance off Route 222, septic tank, well water.

Please Note: Parcel #1 and Parcel #2 Will Be Sold As An Entirety

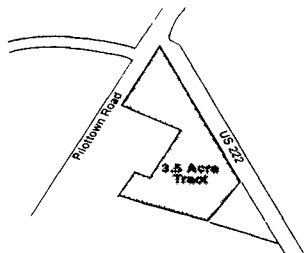
• EXCELLENT TRAFFIC COUNT

• An Excellent Opportunity to Purchase Land Near Maryland and In Southern Lancaster County • This tract is currently being used for logging

INSPECTION OF REAL ESTATE: Go to Property Site at Your Convenience

REAL ESTATE TERMS:
10% Down Day of Auction, Balance Due In Full Within 45 Days
ATTORNEY: James Appel

Auction For:
Charles L. Greer

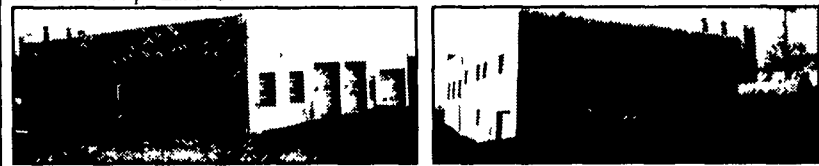


WITMAN AUCTIONEERS INC.
Auctioneers, Appraisers and Liquidators
JAY M. WITMAN, AU01127-J LUKER WITMAN
657 Fruitville Pike, Manheim, PA 17545
(717)665-5735 • fax (717) 664-2737

Visit Our Website: www.witmanauctioneers.com

YOUNDT BROS. MEATS LIQUIDATION
PUBLIC AUCTION
VALUABLE REAL ESTATE
19 ACRES WITH MASONRY BLDG. 78'x62' (BUTCHER SHOP) & 1 ACRE LOT ZONED NEIGHBORHOOD COMMERCIAL W/PUBLIC SEWER
COMPLETE LINE BUTCHER EQUIPMENT & TRUCKS
FORD 1710 TRACTOR & ATTACHMENTS
TUES., APRIL 15, 2003
AUCTION BEGINS AT 10 A.M.
REAL ESTATE 10:30 A.M.

LOCATION: 1050 Dry Tavern Rd (Rt 897) in village of Fivepointville PA From intersection of Rts 272 & 897 take Rt 897 south to Fivepointville thru stop sign to property on left Brecknock Twp Lanc Co



Real estate consists of masonry one sty bldg 78 x62 w/15 1/2 ceilings with over 4836 sq ft of area plus approx 3800 sq ft lower level. Bldg consists of kill floor 43 x16 w/floor chutes, blood pits, holding pen 30 x13, cooking room 24 x12, cutting rm 38 x16, 2 gas fueled smoke houses 14 x16, 2 refrigerators 15 1/2 x32 & 15 1/2 x21 1/2, walk in freezer 16 x10. Full daylight bsmt w/10 ceilings. Large 3 bay garage area plus 4th bay in lower level. **1 ACRE LOT ZONED NEIGHBORHOOD COMMERCIAL** with 193 frontage along Dry Tavern Rd with public sewer available (lot to be sold separately)

NOTE: Bldg is solid masonry w/invl siding, macadam parking lot & drive. Oil hot water heat system. Lot of tile floors & walls. This is a USDA approved facility. On-lot well & septic system. For landplotting brochure or financing call Auctioneers at 717-445-4309 or 717-733-1006. Terms 10% down, balance 60 days. Inspection by appoint. or open house on Sat. March 29 April 5 & 12 from 1-4 P.M. Real estate to be sold at 10:30 A.M.

Auction By:
Randal V. Kline, Roy E. Good, Jr.,
Keith Snyder, Auctioneers
(717)733-1006
Lic. #499L - #2116L - #3433



Terms By:
YOUNDT BROS. MEATS
Lic 717-445-5154

Lancaster Farming's Classified Ads Get Results!