

**LEFEVER BROS.
CHEVROLET
CHEVY TRUCKS**

YOUR DIRECT LINE TO GENUINE GM PARTS

1-800-533-3837

When you call the number listed above, you'll reach our wholesale parts specialists, who can help you keep your GM repair work moving quickly

Ask about

- Specializing in GM Medium Duty Trucks, Current and Obsolete.
- \$500,000 Parts Inventory.
- Parts Locator for Those Hard to Find Items.
- We Ship Anywhere, Local Delivery Available.
- Experienced, Knowledgeable Personnel.

Mon., Tues., Thurs., Fri.
7:30 a.m. - 4:30 p.m.
Wed. 7:30 a.m. - 8:30 p.m.

Major Credit Cards Accepted

717-432-9697

Quality Dealer Since 1921

406 U.S. Rt. 15 Dillsburg PA 17019

GM Parts
THE FEELING IS GENUINE



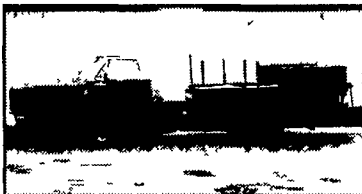
616A W. Market St.
Bridgeville, DE 19933

Phone - 302-337-8233
Fax - 302-337-8037

**SHARK'S
SERVICE CENTER**

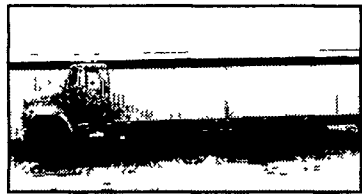
*Truck - Equipment - Auto
Sales & Service*

See Our Full Inventory At www.sharksservicecenter.com



1987 Dodge 1 Ton

5.9 Engine AT, Budd Wheels,
Blue, 2-4' x 1 1/2' Tool Boxes
12' Body



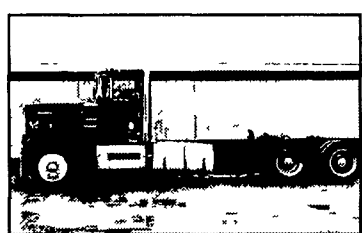
1989 International S2375 10 Wheeler

Henderson Suspension, 9-Spd, L-10
Cummins, Spoke Wheels, P/S A/B,
Double Frame, Good Rubber, C/A,
195", W/B 231"



1968 International Fleetstar

10 Wheeler, Tag Axle, 10 00/20
Rubber Double Frame, Spoke
Wheels Gas Engine, P/S, Air Brakes



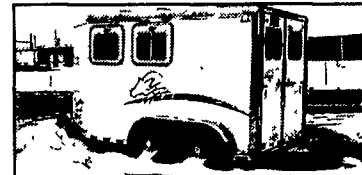
1983 Kenworth

350 Cummins, 15 Spd, Deep
Reduction, Budd Wheels, A/B, P/S,
A/C, C/A, 152", W/B 218"



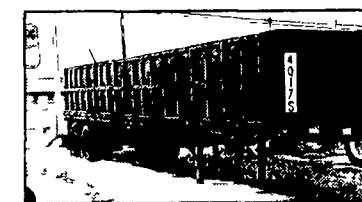
1985 GMC

PS 900R-20, Good Rubber, 5/2 Hydraulic
Disc Brakes, 8.2 Diesel Natural, Spoke
Wheels, 1-50 Gallon Fuel Tank, Truck
Has Reman Motor, C/A 124" W/B 189"



2000 Sooner Horse Trailer

2 Horse, Slate Load, Front Tack
Room, Good Rubber, Rear Tack
Compartment



Fruehauf Trailer

11R22.5 Rubber Spring Suspension
Budd Wheels, Air Brakes 40'
4' Sides



1985 Chevrolet Box Truck

6.2 G M Diesel, AT, Budd Wheels
8R/19.5, 14,000 GVW, 13/2 Wheel Base
Spring Susp., Hyd. Disc Brakes (Front &
Rear) 14' Body, 6'8" Roll Up Door,
Sliding Door Behind Driver

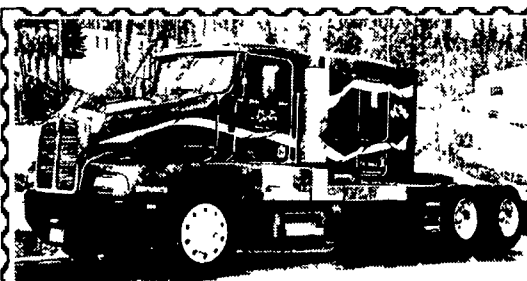


New Open Car Trailer \$1,499
7,000 lbs. GVW, elect. brakes, with ramps that slide
out from under diamond plate steel runways
4x8 Utility Trailer \$399 • Car Dolly \$699
302/368-9534
Newark, Delaware

East Coast Trailers
Honesdale, PA • 570-729-8870

Pop Up Dove Tail Optional

28' 25,500 lb. gooseneck, 102 wide,
standup ramp, dove tail **\$5,750**
24' 14,000 lb. gooseneck, standup ramp,
dove tail **\$3,700**
100 Trailers - All Sizes in Stock



For Sale:
1995 Kenworth T-600, 455 H P Cat, 60" flat top
bunk 3.70 RR, Jake, PS, AC, Heated & Power
Mirrors, Teal Green, 230" WB 650,000 miles
\$19,500
(717) 733-4491



\$21,500

1985 DM Mack, A.C., Low Miles, Electric Over
Hydraulic, Floater Tires, Exc. Cond., Ready to Go.
540/487-0580

PINE TREE MOTORS
2407 W. Main St., Ephrata 17522
717-738-2242

Over 75 Vehicles To Choose From www.pinetreemotors.com

| | | |
|---|--|---|
| <p>99 DODGE RAM 2500 SLT 4x4 Reg Cab 5.9L FI Magnum V8 AT/OD AC PW PDL Tilt Cruise AM/FM Cass Chrome Wheels Towing Package 3/4 Ton White 116 000 Miles \$10 900</p> <p>96 CHEVROLET C2500 SILVERADO EXT CAB 5.7L FI VORTEC V8 AT/OD AC PW PDL Tilt Cruise AM/FM Cass Vinyl Seats & Rubber Floor mat Enclosed Reading Utility Body White 107 000 Miles \$10 900</p> <p>88 CHEV P30 GROMMAN STEP VAN 5.7L FI V8 AT PS PB 10 000 GVWR Dual Front Doors, 12 Ft Box 19 Ft Overall Shelves 8.5 Ft In Rear Dry Compartment Built in Reeler Box White 177 000 Miles \$3 900</p> | <p>99 DODGE RAM 2500 SLT QUAD CAB 5.9L FI Magnum V8 AT/OD 4x4 AC PW, PDL Keyless Tilt Cruise Dual Airbags AM/FM CD PS PB (ABS) 8FT Bed w/Liner 8800 GVWR Towing Package Chrome Wheels Nerf Bars Red 87 000 Miles \$15 900</p> <p>94 CHEV C3500 HD UTILITY BUCKET TRUCK 6.5L Turbo Diesel V8 AT/OD PS PB Delay Wipers Running Boards 15 000 GVWR Composite Utility Body Tetsta High Reach Bucket Inverter White 90 000 Miles \$10 900</p> <p>99 MITSUBISHI FUSO FE SP 4 Cyl Turbo Diesel, AT/OD AC PS PB AM/FM Cass 14 500 GVWR 14Ft Supreme Box Rear Roll Door White 83 000 Miles \$14 900</p> | <p>01 DODGE RAM 3500 SPORT DUALY 5.9L 24 Valve Cummins Turbo Diesel 6 SPD 4x4 Quad Cab PW PDL Pwr Mirrors Tilt Cruise Dual Airbags, AM/FM Cass & CD Pwr Heated Seats Leather 6 Pass Towing Package Black 59 000 Miles \$28 900</p> <p>00 CHEVROLET C2500 SILVERADO 2WD 5.3L VORTEC V8 AT/OD, AC Tilt Cruise AM FM Cass Cloth Seat Rubber Mat 3/4 Ton White 79 000 Miles \$8 995</p> <p>01 DODGE RAM 1500 SLT QUAD CAB 5.2L FI Magnum V8 4x4 AT/OD AC PW PDL Tilt Cruise Dual Airbags AM/FM Cass/CD Alloy Wheels Towing Package Short Bed Silver 63 000 Miles \$15 900</p> |
|---|--|---|

FINANCING AVAILABLE

| | |
|--|--|
| <p>CARS</p> <p>02 MITSUBISHI GALANT ES, 4 DR AT, AC \$11 900 01 CHEV IMPALA, AT, AC, 4 DR \$9 450 00 PONTIAC GRAND PRIX GT AT, AC, 4 DR \$10,495 00 CHEV CAVALIER Z24 AT, AC, 2DR \$9,900 00 BUICK LESABRE CUSTOM, AT, AC 4DR \$8 995 99 BUICK CENTURY CUSTOM, AT, AC, 4DR \$7 495 98 HONDA ACCORD LX, AT, AC, 4DR \$8 995 98 HONDA CIVIC, 5 SPD, AC, 4DR \$7,995 98 DODGE INTREPID, AT, AC, 4DR \$6,995 98 DODGE STRATUS, 4DR, AC, \$6,500 98 DODGE NEON AT, AC, 4DR \$5,500 97 CHEV CAMARO Z28 AT, AC, 2DR \$10,500 97 DODGE INTREPID AT, AC, 4DR \$5,995 97 CHEVY CAVALIER LS, AT, AC, 4DR \$5,900 96 VW GOLF GL, 5 SPD, AC, 4DR \$4 995 95 HONDA ACCORD LX, AT, AC, 4DR \$7 995 94 DODGE INTREPID ES, AT, AC 4DR \$3,995 93 PONTIAC GRAND AM SEAT, 4DR \$4,900 93 MITSUBISHI ECLIPSE GS AT, AC, 2 DR \$3 900 90 HONDA ACCORD LX, AT, 4DR \$4 800</p> <p>SPORT UTILITIES</p> <p>01 JEEP GRD CHEROKEE LAREDO, 4X4 AT, AC, \$14 500 00 CHEV S10 BLAZER LS, 4X4 \$10,495 99 DODGE DURANGO SLT PLUS 4x4, 16K Miles \$CALL 99 JEEP GRD CHEROKEE LAREDO, 4x4, AT, AC, \$15,800 99 MITS MONTERO SPORT XLS 4x4, AT, AC, \$13,900 98 CHEV TAHOE LT, AT, AC, \$13,900 98 DODGE DURANGO SLT 4x4 AC, AT, 3RD SEAT \$12 900 97 GMC SUBURBAN SLT 4x4 AC AT \$14 500 97 FORD EXPEDITION XLT 4x4 AC, AT, 3RD SEAT \$13 900 97 GMC YUKON SLI 4x4 AT AC LEATHER \$13 500 97 JEEP CHEROKEE SPORT 4x4 AC AT \$4 995 96 CHEV TAHOE LS 4x4 AC AT \$11 900 96 GMC JIMMY SLE 4DR 4x4 AC AT \$7 995 95 GMC SUBURBAN SLE 4x4 AT AC \$11 900</p> <p>VANS</p> <p>02 DODGE B3500 PREM DECOR 15 PASS \$16 500 01 DODGE B3500 PREM DECOR 15 PASS \$13 900 01 DODGE GRD CARAVAN TWIN DR AT AC \$10 495 00 DODGE B250 CARGO VAN AT AC \$10 900 99 FORD WINDSTAR LX TWIN DR AT AC \$9 900 99 FORD CLUB WAGON EXT AT AC \$10 900 99 FORD E250 CARGO VAN AT AC \$9 800 99 DODGE CARAVAN TWIN DR AT AC GREEN \$6 900 99 DODGE CARAVAN TWIN DR AT AC RED \$5 900</p> | <p>98 FORD WINDSTAR GL AT, AC \$7 995 98 GMC SAVANA G1500, CARGO, AT, AC \$8 995 98 CHEV ASTRO CARGO AT, AC \$7 995 98 FORD E150 CLUB WAGON XLT, AT, AC 8 PASS \$8 995 97 OLDS SILOUETTE GLS EXT TWIN, DR AT, AC, \$9 900 97 DODGE CARAVAN CARGO TWIN DR, AT, AC \$5 900 96 DODGE B3500 SLT, AT, AC, 15 PASS \$9 800 95 FORD E350 EXT CARGO, AC AT, \$6 900 94 GMC SAFARI SLE EXT, AWD, AT AC, 8 PASS \$5 995 94 DODGE B-150 AT, AC 8 PASS \$3,900 92 DODGE CARAVAN SE, AT, AC \$2,500</p> <p>TRUCKS</p> <p>01 DODGE RAM 3500 SPORT DUALY QUAD CAB 4x4 \$28 900 01 DODGE RAM 1500 SLT QUAD CAB, 4x4, AC \$15 900 01 DODGE RAM 1500 AT, AC, 2WD \$10 900 01 FORD F150 XLT SUPER CREW, 4DR, 4x4 \$CALL 00 GMC K1500 SLE EXT CAB, 3RD DOOR, AT AC 4x4 \$17 900 00 CHEV C2500 SILVERADO, 2WD \$8 995 00 DODGE DAKOTA SLT EXT CAB, 4x4 \$CALL 00 DODGE DAKOTA SLT QUAD CAB AT AC 2WD \$12 800 99 DODGE RAM 2500 SLT QUAD CAB 4x4 AT AC \$15 900 99 DODGE RAM 2500 SLT 4x4 \$10 900 99 FORD F250 SUPER DUTY XLT, AT, AC, \$12,900 99 MITSUBISHI FUSO FE SP BOX, AT, AC \$14 900 99 FORD F250 SUPER DUTY, UTILITY TOPPER \$12 500 99 FORD RANGER XLT 4x4, QUAD CAB AT AC \$10 900 99 FORD F250 SD, 2WD, AT, AC \$7 995 99 FORD F250 SD, AT, AC, 2WD \$7 900 99 CHEV S10 LS, 5 SPD, AC, 2WD \$7 995 99 DODGE RAM 2500 AT, AC, 2WD \$7 800 98 DODGE RAM 1500 SPORT QUAD CAB 4x4 \$11 900 98 CHEV S10 LS 5 SPD AC 2WD \$6 995 98 DODGE RAM 1500 SLT 4x4 AT AC \$11 900 97 GMC K2500 SL EXT CAB 4x4 \$14 500 97 FORD F150 XLT EXT CAB 4x4 3RD DR \$12 900 97 FORD F150 5 SPD \$8 995 96 CHEV C2500 SILVERADO EXT CAB UTILITY BODY \$10 900 96 DODGE RAM 1500 SLT AT AC 2WD \$8 500 96 GMC K1500 SLE EXT CAB 4x4 AT AC \$11 900 95 FORD F350 BOX TRK POWER STROKE DIESEL AT \$10 900 94 CHEV C3500 HD UTILITY BUCKET TRUCK AT \$10 900 94 FORD RANGER XLT 2WD 5 SPD, AC \$3 500 93 CHEV C3500 HD UTILITY BUCKET TRUCK AT \$10 900 92 ISUZU NPR 14 FT BOX TRK TURBO, DIESEL AT AC \$7 995 88 CHEV P30 GROMMAN STEP VAN, AT \$3 900</p> |
|--|--|