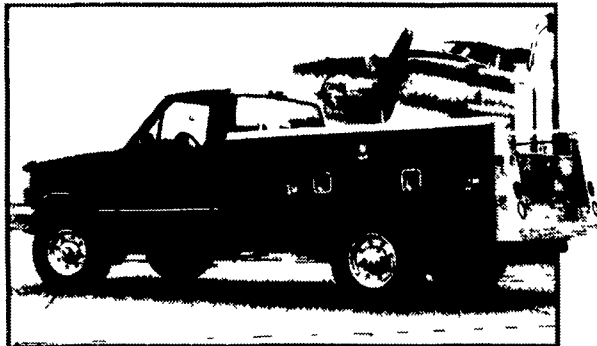


NOW - Create Your Own Service Body

with the help of Annville Equipment Co.



The MCB way...

We Sell and Install...

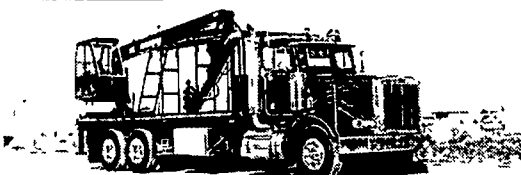


Monroe Custom Utility Bodies, Inc.

ANNVILLE EQUIPMENT CO.

470 Palmyra-Bellgrove Road, Annville, PA 17003
 717-867-4631 1-800-233-0520
 Email: aeci@paonline.com
 Website: annvilleequipmentcompany.com
 We provide parts & service for New Leader spreaders.
 Building the best since 1939.

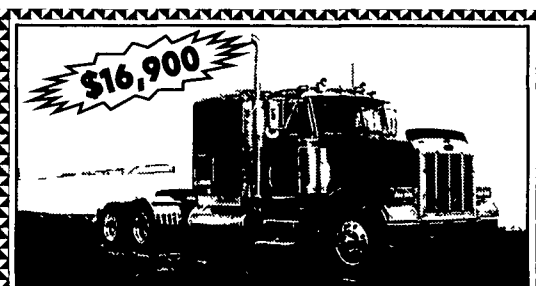
2000 Peterbilt Crane Truck: Unit Like Brand New!



Truck: 2000 Peterbilt 378 Set Back Axle
 Engine: Cat 3406-E C-15, 475 hp
 Trans: Fuller 8LL, RTO 16908LL
 Rears: Spicer DC-1460-I 824645
 Miles 2740 Actual, Hours 170
 Bed: 22' Steel

Crane: Allis 140 1 Knuck Boom
 by Atlas Weyhausen, 37' Side Reach

NO SUNDAY CALLS
(717) 597-5623



1995 Peterbilt
 Cat 3406 E, 375 hp, Fuller 10 speed, Air Ride Susp., Sliding 5th Wheel, 60" Unibilt Sleeper (Removable), Dual Stacks, Dual Chrome Air Filters, Stainless 1/2 Fenders, Aluminum Wheels, Good Tires & Brakes, 819,000 Mi., 200,000 On Overhaul,
No Sunday Calls (717) 597-5623



131 Kline Rd., Bethel, PA 19507
 We're Located Right On I78 @ Exit 17

WE BUY TRUCKS

717-933-9792

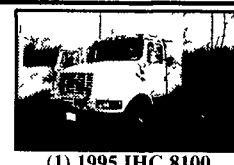
Fax 933-9782 www.besttrucks.net



1995 GMC 14' Hi Cube,
 Diesel Automatic
 125K Miles White
\$7,800
 SFS42629



1994 International 4700,
 24 Van DT408 190hp (Eng Work Completed) 5 Spd 29000 GVW
 Air Brakes White Spoke Wheels
\$8,500
 RH598196



(1) 1995 IHC 8100
 Single Axle Day Cabs Detroit SR50 315hp 9 Spd 300 500K Miles Air Ride AC PS Cruise Hid Mirrors 75R22 5 Tires
 Prices Starting At
\$10,500
 SH626784



1994 KW T600 Tandem Day Cab, Cat 3406C 350hp 9 speed 620K Miles 4 11 rears 2 alum steers Red
\$14,900 RJ633635



1996 IHC 4700LP, 18 Van T444 175hp 5 speed 198K Miles 25000 GVW hydraulic brakes
\$9,750
 TH386270



1997 FL70 18' VAN,
 Cummins 5.9 190hp 137K Miles NON CDI Air Brakes Yellow AC Lift Gate Curb Side Door
\$12,500 192411



1992 GMC Digger Derrick, CAT 3116 185HP 5/2 Speed 95K Miles 1993 TECO Model A335C B2 ASXO Upper Controls & Bucket Winch Capacity 12,000 lbs. 90% Virgin Re-tires 7k Hours
\$17,000 NJ107286



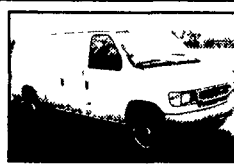
1998 Volvo VNL610, 12 7 430/470 HP, 10 Speed 605K Miles 10 Steel Wheels Single Bunk White Wheel to Wheel 1 Case Maintained
\$25,500 WN760894



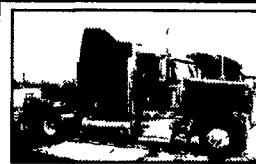
12 Bay Beverage Trucks,
 1989 Ford LN8000 7 8 215 hp Automatic 32 000 GVW Air Brake White 118k miles Mickey Bodies
\$6,500 EACH KVA36836



1996 Ford LN8000 20' Van,
 Cummins 8 3 210 6 speed 200k miles White AC 6 speed 1 driver truck
\$10,500 TVA21914



2000 Ford E250 Panel Van, 4.2L gas Automatic 138K miles White AC YHA
\$10,300 YHA15980



1998 Kenworth W900L, 77 AeriCab Detroit 127 500hp 18 speed 355 Eaton Rears Approx 260 Wheel Base Dual Hi Back Seats VIT Interior Dual Polished Fuel Tanks 2 Alum Wheel Red
\$43,500 WR768120



1995 FTL FLD12064ST,
 48 Flat Top CAT 3406 410hp 15 Speed 600K Aluminum Wheels 3 73 Ratio Jake Brake Dual Stacks
\$10,900
 SH681403



1999 Pete 379 EXH, 63 Raised Roof Ultracab N14 525hp 13 Speed American Class 526K Miles 10 Alum Wheels Dark Metallic Blue
\$48,000 D472991



1995 Volvo WG64T, Tandem Daycab VFD12 335HP 9 Speed 380K Miles Air Ride 3 08 Rears 170 Wheel Base Air Slide 5th Wheel Blue
\$11,500 SRR835904



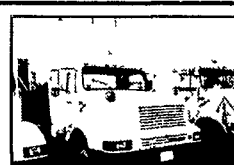
(3) 1996 IHC 9200 51" Pro Sleepers, Cummins M11 330E 9 Speed 1 Million Miles Jake Brake 2 Alum Wheels Air Ride White
\$8,500 TC014804



1995 FTL FLS1264ST,
 48 Flat Top Sleeper Cummins N14 350HP 9 Speed Black, 580K Miles Air Ride Jake Brake Lease maintained
\$11,500
 SH1767487



1998 Pete 379 119" hood, 63 Unibilt Ultracab Sleeper Detroit 12 7 430/470 Hp 0 Speed 3 90 Re-tires 628K Miles Virgin Tires 10 Aluminum Wheel Tilt/Tek. Accent Interior Jake Brake Black
\$27,900 WN448801



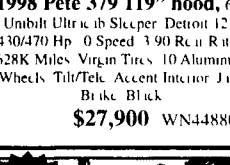
(2) 1995 IHC 8200
 Single Axle Day Cabs Cummins M11 280hp 9 Speed 7 800K Miles Spring Suspension AC PS Prices Starting At
\$8,750 SH663851



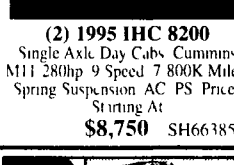
1994 FLD 12064ST 48" Flat top, CAT 3406 350hp 9 speed 517K miles white Air ride Jake brake
\$10,500
 RH627525



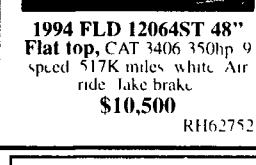
(3) 1993 Isuzu Lube Truck, D51 Automatic 50K miles 14250 GVW White will separate bodies
\$9,200 Ea.
 P7011226



1990 IHC 8300 Tandem Day Cab, Cummins NTC 315, 9 Speed, 299K Miles Spring Suspension, White Not Inspected, Runs Great!
\$5,500 LH223704



1993 Mack CL613 Tandem Sleeper, MACK Flite E9 V8 500hp MACK 18 speed MACK rears Air Ride 550K miles Black 10 alum wheels Virgin tires
\$21,500 PW001158



1993 IHC 8200 Tandem Day Cab, Cummins N14 350 9 Speed 300K Miles Air Ride White
\$8,500
 PH514869



1998 FTL FLD12064ST 70" Double bunk, CAT 3406 475hp 13 speed 900K miles Air ride 2 alum wheels
\$16,000 WA898580



(2) Storage Trailers:
 Both Are 1980's Doc by 42 long 96 wide Spring Suspension Swing Doors
\$1,400 Ea.
 8H028947



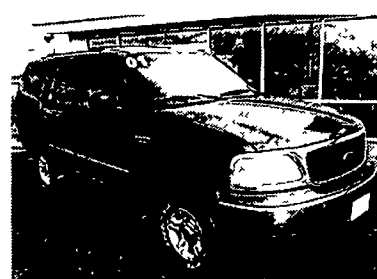
Coming Soon! Mobile Home Toter
 1995 8100 Modular Home Toter Cummins M11 330hp 9 Speed Jake Brake 144 Wheel Base Air Ride 700 K Miles White
\$12,500 SH1216628



1998 IHC 4900 22' Flat Bed, DT466 195HP 6 Speed 120K Miles 25 500 GVW Hydr white Brakes Yellow AC
\$17,900
 020204



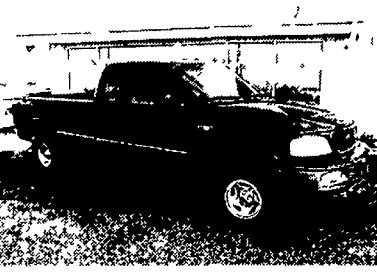
2002 Ford F-150 Supercrew
 8 Cyl, 5.4L, Auto, Loaded, CD,
#P3442 \$26,995



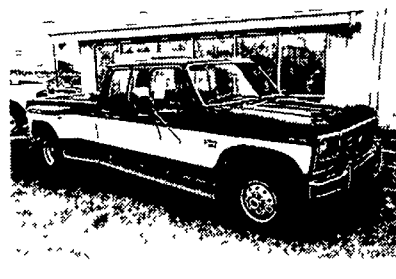
2001 Ford Expedition XLT
 8 Cyl., Auto., Loaded, 3rd Seat,
#P6133 \$21,995



1999 Ford F-250 XLT
 V10, Auto., Fully Loaded
#P6816 \$21,995



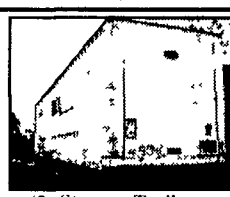
1997 Ford F-150 XLT
 8 Cyl., Auto., Loaded, Long Bed,
#P5689 \$15,995



1986 Ford F350 Dually
 8 Cyl., DSL, Auto, AC
#P8672A \$7,995



475 HP
 1998 FTL FLD12064ST 70" Double bunk, CAT 3406 475hp 13 speed 900K miles Air ride 2 alum wheels
\$16,000 WA898580



(2) Storage Trailers:
 Both Are 1980's Doc by 42 long 96 wide Spring Suspension Swing Doors
\$1,400 Ea.
 8H028947



Coming Soon! Mobile Home Toter
 1995 8100 Modular Home Toter Cummins M11 330hp 9 Speed Jake Brake 144 Wheel Base Air Ride 700 K Miles White
\$12,500 SH1216628



1998 IHC 4900 22' Flat Bed, DT466 195HP 6 Speed 120K Miles 25 500 GVW Hydr white Brakes Yellow AC
\$17,900
 020204

"Bid on our trucks at:" www.truck-network.com