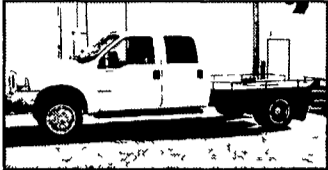




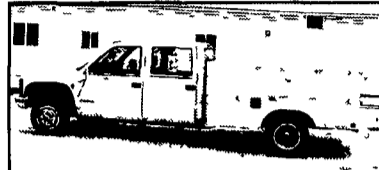
**1999 Int. Tri-Axle Dump Truck**  
150,000 Original Miles, Cummins Diesel,  
**\$49,500**



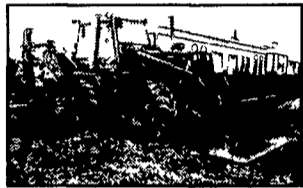
**1993 Mack Superliner Tri-Axle Dump Truck**  
**\$36,500**



**2000 Ford F-550 Crew Cab**  
2WD w/8' Flatdeck w/fifth wheel plate, Lariat Package Loaded w/Leather, 7.3 Liter Diesel, 6 Sp Trans, Excellent Condition,  
**\$22,900**



**2000 Chev 3500 Crew Cab 4x4**  
Dually Service Truck, Vortec V-8, Automatic, 8' Reading Classic Service Body w/3 Piece Sliding Top, 48,822 Miles, Excellent Shape  
**\$22,900**



**1986 Dynahoe D-190 4x4 Backhoe**  
Enclosed Cab, 120 HP Diesel, 32" Bucket  
**\$10,500**



**CAT D9H Dozer**  
EROPS w/Heat; Semi-U-Blade, Complete Undercarriage 80%; Nice Tight Machine.  
**\$39,500**

Also Available  
1998 Cat D5 MLPG, 5,000 Hrs Brand New Complete Undercarriage  
**\$64,500 Will Trade!**

**Curry Supply Co.**  
Curryville, PA  
1-800-345-2829 814-793-2829

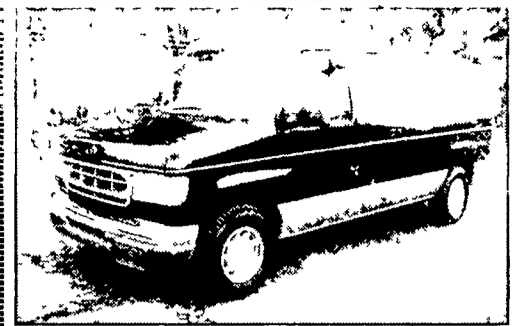


**SCHAEFFERSTOWN LOCATION**  
717-949-6513

- 2000 Ford, F 250 Lariat Super Duty Quad Cab Diesel Power Stroke, AT, CC AC, PW, PL, PM, PS, Leather Interior, Cass, White, 35,150 Miles **\$27,500**
- 1995 Dodge 2500 Diesel 5.9, 4 Speed W/O 4X4, Air Bag, Delay Wipers, Cass, 8' Bed, Teal, 99,900 Miles **\$12,900**
- 1996 Ford F-450, Power Stroke Diesel, 5 Speed Trans 8 Foot Chassis, Delay Wipers Blue, 78,700 Miles **\$12,900**
- 1997 Dodge 1500, SLT, Laramie, V8, 5.2, 4X4, AT, CC, AC, PW, PL, PM, Cass, Alloy Wheels, Green/Silver, 41,800 Miles **\$14,900**
- 1997 Ford E 250, Cargo, V8, 5.4, AT, AC, Delay Wipers, Bins & Shelves, White, 79,500 Miles **\$10,500**

**MYERSTOWN LOCATION**  
717-866-5000

- 2000 Chev 2500 Silverado Extended Cab, 8' Bed, V8 6.0, 4X4 AT, CC, AC Delay Wipers, 3rd Door, Green, 69,000 Miles **\$18,900**
- 2000 Dodge 1500 Laramie SLT Quad Cab, V8 5.9, AT 4X4, CC, AC, PW, PL, Cass, Short Bed Grey, 52,800 Miles **\$18,900**
- 2000 Chevrolet 1500 Silverado LS, Ext Cab, V8, 4.8, AT, CC, AC, PW, PL, PM, Delay Wipers, Grey, 53,200 Miles **\$19,900**
- 1996 Chevrolet 1500, V6, 4.3, AT 4X4, AC, Delay Wipers, Cass, White, 98,600 Miles **\$7,900**



**2002 Ford E-150 Club Wagon Chateau**, Black, V-6, 7 Pass, Air Conditioning, Driver Airbag, 12050 Automatic, 6-Cyl, Power Locks, Cassette, Passenger Airbag, Power Windows, Cruise Control, **\$19,250**.

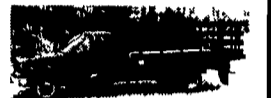
**Jerry Hoover**

6651 Baertown Rd., Dover, OH 44622  
**330-878-6630 M-F 8-5**

**Meadowbrook Auto Sales**  
875 Abbottstown Pike, Hanover, PA  
**717-632-9600 717-633-5789**



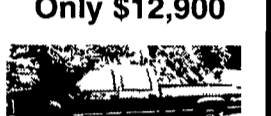
**1997 Ford F-350 Crew Cab XLT**  
4x4 7.3 Powerstroke Diesel, Automatic PS PB Air Cond PW PDL Tilt Wheel Cruise Control, 138,000 Miles  
**Only \$19,900**



**1999 GMC 12 Ft. Stakebody**  
350 V-8, Automatic, Air Cond, PS, PB, Tilt Wheel, Cruise Control, Dual Rear Wheels 79,000 Miles  
**Only \$12,900**



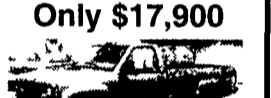
**2002 Chevrolet G-15 Cargo Van**  
4.3 V-6, Automatic, Air Cond PS, PB, 17,000 Miles  
**Only \$15,900**



**1999 GMC Crew Cab**  
4x4, V-8, 350 A T, PS, PB, A/C, Tilt, Cruise Control, 78,000 Miles  
**Only \$17,900**



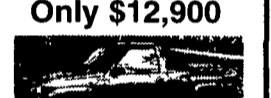
**1997 Dodge Ram Ext. Cab**  
Dually 4x4 6 Cyl Cummins Diesel Automatic PS PB Air Cond PW PDL Tilt Wheel Cruise Control, High Miles and Very Well Maintained  
**Only \$17,900**



**1997 Chevrolet K-2500**  
4x4, V-8, A T, PS, PB, Air Cond, 84,000 Miles Nice Condition  
**Only \$12,900**



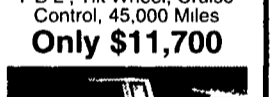
**1994 Ford F-250 XLT**  
4x4, V-8 351, A T, PS, PB, Air Cond, Tilt Wheel, Cruise Control, 99,000 Miles  
**Only \$9,900**



**1995 Chevrolet K-1500**  
Stepside 4x4, 350 V-8, Auto, Air Cond, PW, PDL, Tilt Wheel, Cruise Control, 45,000 Miles  
**Only \$11,700**



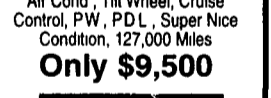
**1992 Ford F-250 Utility Truck**  
351, V-8, 5-Speed, PS, PB, Air Cond, Great Condition, 93,000 Miles  
**Only \$6,900**



**1993 Ford F-250**  
Ext Cab 4x4, 351 V-8, PS, PB, Air Cond, Tilt Wheel, Cruise Control, PW, PDL, Super Nice Condition, 127,000 Miles  
**Only \$9,500**



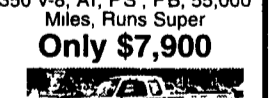
**1999 Chevrolet C-3500 Utility Truck**  
6.5 Diesel, Automatic, PS, PB, Air Cond, Dual Rear Wheels, Super Nice Truck, 103,000 Miles  
**Only \$14,900**



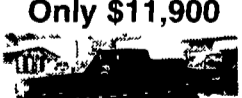
**1988 GMC Bucket/Utility Truck**  
350 V-8, AT, PS, PB, 55,000 Miles, Runs Super  
**Only \$7,900**



**1996 Ford F-250 XL 4x4**  
351 V-8, Automatic, PS, PB, Alloy Wheels, Super Clean and Condition, 102,000 Miles  
**Only \$11,900**



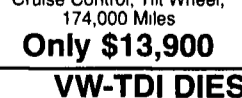
**1993 Dodge Ram 2500 Ext. Cab**  
Cummins Diesel, A T, PS, PB Cruise Control, Tilt Wheel, PW, PDL, 92,000 Miles  
**Only \$7,900**



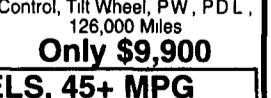
**1997 Ford F-250 Ext. Cab XLT**  
4x4, 7.3 Powerstroke Diesel, 5 Speed, PS, PB, Air Cond, Cruise Control, Tilt Wheel, 174,000 Miles  
**Only \$13,900**



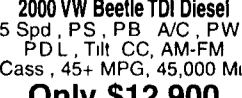
**1994 Ford F-250 Ext. Cab**  
7.3 Turbo Diesel, Automatic, PS, PB, Air Cond, Cruise Control, Tilt Wheel, PW, PDL, 126,000 Miles  
**Only \$9,900**



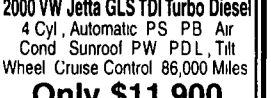
**2000 VW Beetle TDI Diesel**  
5 Spd, PS, PB A/C, PW, PDL, Tilt CC, AM-FM Cass, 45+ MPG, 45,000 Mi  
**Only \$12,900**



**2000 VW Jetta GLS TDI Turbo Diesel**  
4 Cyl, Automatic PS PB Air Cond Sunroof PW PDL Tilt Wheel Cruise Control 86,000 Miles  
**Only \$11,900**



**2000 VW Beetle TDI Diesel**  
5 Spd, PS, PB A/C, PW, PDL, Tilt CC, AM-FM Cass, 45+ MPG, 45,000 Mi  
**Only \$12,900**



**2000 VW Jetta GLS TDI Turbo Diesel**  
4 Cyl, Automatic PS PB Air Cond Sunroof PW PDL Tilt Wheel Cruise Control 86,000 Miles  
**Only \$11,900**

[www.meadowbrookauto.com](http://www.meadowbrookauto.com)

**WILLIAM H. WESSELS USED CARS**

811 Route 15 Dillsburg, PA  
**1-800-440-4433 1-717-432-2918**  
Notary Public - Temporary Tags



**99 DODGE RAM LARAMIE SLT 4x4**  
5.2 V-8, Auto, AC, 37,000 Miles  
**\$15,900**



**1990 DODGE RAM 150**  
5.2 V-8, Auto, 92,000 Miles, Local 1 Owner, Garage Kept Trade  
**\$3,990**



**99 DODGE RAM 1500 CLUB CAB**, 4x4, V-8, Auto., AC, Only 15,358 Miles  
**\$20,900**



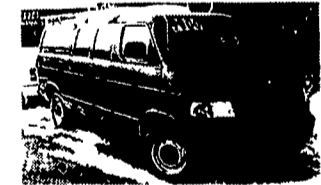
**1999 FORD E250 EXT. CARGO**  
V-8, Auto, AC, 43,365 Miles  
**\$13,900**



**1994 FORD F150 EX CAB 4x4**  
302 V-8, Auto, AC, XLT, 105,000 Miles, Local Trade  
**\$8,990**



**01 DODGE RAM 1500**  
3.9 V-6, Auto, AC, 39,040 Miles  
**\$11,900**



**00 DODGE RAM 2500 CARGO VAN**, 5.2L V-8, Auto., AC, 69,000 Miles  
**\$9,900**



**96 CHEVY K1500 4x4**  
V-6, 5 Speed, AC, 50,720 Miles  
**\$8,990**



**2000 CHEVY ASTRO**  
AWD Cargo Van, V-8, Auto, AC, 56,310 Miles  
**\$10,900**



**1999 DODGE DAKOTA CLUB CAB 4x4**  
V-8, Auto, AC, 45,310 Miles  
**\$15,900**



**96 FORD F250**  
4x2, XL, 4.9L 6 Cyl, Auto, AC, 62,000 Miles  
**\$8,990**



**2000 DODGE DAKOTA, PICKUP**  
WITH UTILITY CAP, 3.9 V-6, Auto, AC/Factory Warranty, 19,000 Miles  
**\$8,990**



**97 DODGE RAM 1500**  
Ex. Cab, 4x4, Long Bed, SLT Pkg., 360 V-8, Auto., AC, 116,411 Miles  
**\$9,900**



**2000 GMC 3500 EXT. CARGO VAN**  
Turbo Diesel, Auto, AC, 75,214 Miles  
**\$14,900**



**95 FORD F150 4x4**, 4.9L 6 Cyl., 5-Speed, AC, 84,200 Miles  
**\$7,900**



**1997 FORD F350 UTILITY TRUCK**, 4x4, 460 V-8, Auto, AC, 91,000 Miles  
**\$14,900**



**01 DODGE B1500 Ext. Cargo Van**  
V-6, Auto., AC, 35,000 Miles  
**\$14,900**



**2000 CHEVY K1500 4x4**  
Silverado, 4.8 V-8, Auto, AC, Only 26,000 Miles  
**\$15,900**

**1992 CHEVY C1500**  
V-6, Auto, Air, 66,910 Miles  
**\$5,990**

**2001 CHEVY SUBURBAN LT**  
4x4, 5.3 V-8, Auto., Dual AC, Leather, Only 3,916 Miles  
**\$33,900**

**1995 FORD F150**  
4x4, 6 Cyl., Auto., Air, 118,000 Miles  
**\$3,990**



**00 CHEVY C1500 WT**  
V-6, Auto, AC, 84,056 Miles  
**\$7,990**