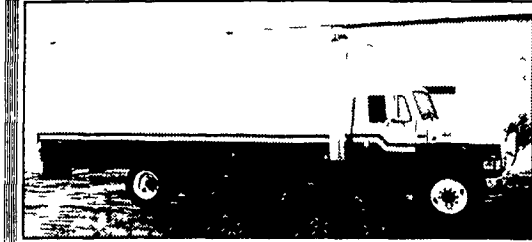


**35 TRUCKS AND TRAILERS**

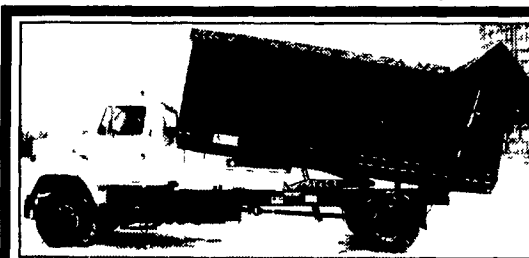


**1984 Int'l 8yd Dump Truck,**  
radial tires, set up for trailer,  
exc. cond. **\$10,000/OBO.**  
**908-439-2926**



**1995 International 4900 DT466,**  
7 spd., air brakes, AC, 32K GVW,  
22 ft. Morgan body, 212K, **\$8,900**

**South Mountain Auto Sales**  
**717/532-6707**



**1987 International S2200**  
18 Ft. Scott Silage Dump Body  
300 Cummins Engine, 9 Spd.,  
33,000 GVW • **\$22,000**  
Phone. **570-934-2436**  
Fax. **570-934-2812**

1984 Ford F350 crew cab  
5.8L V8, auto, cap, good  
condition. body solid,  
\$1900 OBO. 610-944-4718

1984 GMC 7000 w/24'  
Danco rollback farm  
equip bed, has wheel  
wells & alum body w/  
wood floor, VG cond,  
\$8,900. Eves, 908-359-5934.

16' Gooseneck Cattle  
Trailer Featherlite, v.g.  
\$4,000 814-926-2710.

70HC 1200 4x4 pickup,  
1-owner, 50k, w/JD skid  
mount, 350 gal sprayer  
foam, 40' boom, \$2,250  
Lehigh Co. 610-262-4501  
e v e n i n g s

83 Chevy truck 30 Series,  
cab & chassis, 11,000  
gvw, PTO, \$2200. York  
Co. 717-432-8985

'77 Int dump truck, 16ft  
dump w/grain chute,  
\$2000. Other equip for  
sale. Call for a list.  
215-721-1346

1976 Jeep 4x4, 6 1/2 ft, P/A  
Myers snowplow. Plow &  
drive-train G cond, body P  
cond. 8ft Western P/A  
snowplow. \$1,250 ea,  
717-292-5629

8'x6' Pressure Treated  
Wood Trailer. Good ATV  
or farm trailer. \$400.  
717-484-0423.

1980 Int S1900 chassis,  
9.0L dsl, 5+2, AB, \$800.  
610-932-5270.

1990 Ford F250 w/8'  
Omaha utility body w/  
ladder rack, 351 auto,  
\$2,800 obo. 610-932-5270.

1993 Ford Super Duty,  
11' utility body w/crane,  
diesel, 5 spd, \$10,500.  
717-436-5800.

1986 MS300 Mack fuel  
truck, 3,000 gal alum  
tank, single compart-  
m e n t , \$ 8 , 5 0 0 .  
717-436-5800.

'98 Dodge diesel dually  
pickup, 1 ton, 5 spd, 4x4,  
ex cond, \$17,000.  
717-838-6985

'72 Int stake body V8, AB,  
PS, 5+2, 24k, v.g. \$1800.  
570-386-5169

1993 Custom trailer, elec  
brakes, 20ft deck, 4ft  
beaver tail, \$3,700.  
717-272-1001

Ford F150's '92 & '93, 6 cyl,  
5 spd, good, \$1850 ea.  
Inspec. 215-343-1218

Mack 10 wheel dump  
DM685S, 1970, plow, clean  
\$6500 OBO. 215/343-1218

'89 Ford F250 extended  
cab, 4x4, 154k mi, new  
eng, matching cap, runs  
great, \$6300. 717-838-4610

1996 Dodge 1 ton dually  
pickup bed, slight damage  
left rear, nerf bars, 5th  
wheel attachment &  
b u m p e r , \$ 8 0 0 .  
717-442-8206

Tampo Sheeps Foot Roller,  
66" drum, 3-53 Detroit,  
\$14,000. 717-939-6023.

Rogers Low Boy trailer  
fixed neck \$3,000  
717-939-6023.

**Interstate Truck Equipment, Inc.**

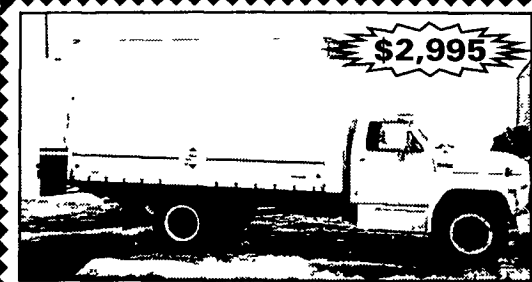
12821 Salem Avenue  
Hagerstown, Maryland 21740

**NEW 2001 MITSUBISHI FUSO FH211T,**  
17,995# GVWR, S/N 3088, 6 Cyl/175HP Diesel, 6  
Sp, AC, Exhaust Brake, W or W/O 16' Van Body  
w/Roll Up Rear Door

**USED '98 MITSUBISHI FUSO FE639T,**  
13,500# GVWR, S/N 2057, 4 Cyl/135HP Diesel,  
Auto, AC, W or W/O 14' Van Body w/2,000# Lift  
Gate, 84,967 Miles

**USED '97 MITSUBISHI FUSO FE639L,**  
11,600# GVWR, S/N 2956, 4 Cyl/135 HP Diesel, 5  
Sp, Exhaust Brake, W or W/O 14' Van Body,  
88, 157 Miles

Contact Harold Jones 301-733-1707 Ext. 108



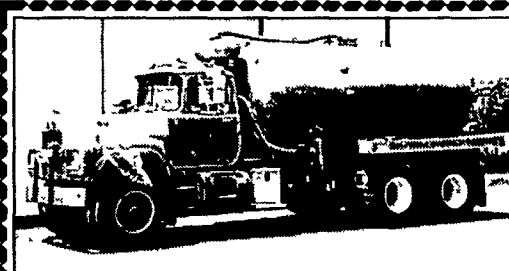
**\$2,995**

**1985 Ford F600 V8 Gas 4 Spd.**  
Recent Rebuilt Engine 20,200 lb GVW  
New Inspection, Service and Tune Up  
111K Miles, 14 Ft Morgan Body with Lift Gate

**South Mountain Auto Sales**  
**717/532-6707**



**1976 IH 4200, 52,000 GVW,**  
330 hp, 13 speed w/1985 Eby  
alum. grain body, ex. cond.,  
**\$15,500, Elverson, Berks Co., PA**  
**(cell) 610-476-2731**



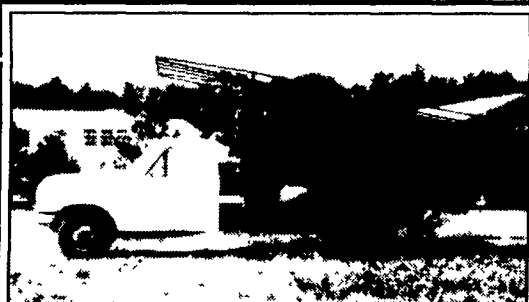
**1982 Mack RD 285 engine,**  
6 speed, air shift, 4,000 gal.  
vac tank, dual 425 tires.  
**717-776-6142**



2002 GMC T6500, 72 L Cat Diesel - Allison Auto Trans.,  
8,800 miles, Michelin 11 R x 22 5 tires, 25950 GVWR,  
New Inspection, Eby Aluminum 14 ft. Dump Body  
w/optional cattle racks, Eby frame mount utility box - 4  
way tailgate, Receiver hitch and electric brakes

**Asking \$40,900**

484/614-5140 leave message

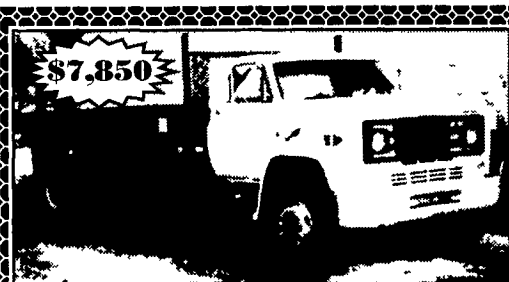


**1987 FORD F350 12' Stake Body**  
Dump, 460 Gas, 4 spd, 140,000 miles.  
**\$5000 Firm**  
**717/227-0924**



**\$45,000 obo**

2001 Eby Walking Floor, 45', 102", 12'6" high,  
100 cu yards, 24 5 Lopro, all aluminum  
wheels, air ride, tandem w/sluder,  
w/detachable grain hopper, used 1 year,  
**(717) 484-6192**



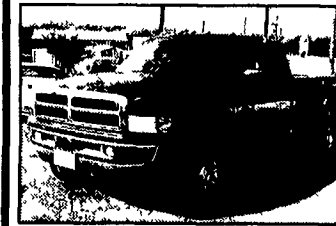
**\$7,850**

1985 GMC. 16' Flat Bed with Dump Hoist,  
28,000 GVW, 8.2T Diesel, 115,000 Miles,  
Frt. Tires Like New, Rear Tires Fair.

**717-776-7725**

**Diesel Owners!**

**Get HP & Fuel Mileage**



**We Have Performance Chips For The Following:**

- Dodge Cummins 40-120 HP + 175 Ft lbs More Torque
- Chevy Duramax 70-210 more HP up to over 400 lbs of Torque
- Ford Powerstroke 60 - 80 - 120 add more HP up to 200 lbs. of Torque
- VW TD 35 more HP add up to 35 + 45 lbs. of Torque

**Free Installation** 2003 Performance Chips & Exhaust are here & in stock!

**We carry complete line 4" exhaust systems for..... \$550**  
\*Torque Converters \*Valve Bodies \*Exhaust Brakes \*Gauges \*K&N Air Filters

You Get More Horsepower & Torque

**We Carry The Best Stuff For Your Truck**  
Propane For Diesel - Nitrus For Diesel

**(717) 249-2255 Call Now!!! Ask for Shawn**

**LOVE'S AUTO SALES INC.**

1970 Spring Road, Carlisle, PA 17013

**Sales, Service & Inspection**

Call About  
Our Gas  
Chips

Better  
Fuel  
Mileage

**BRUBAKER'S AUTO SALES**

PH. 717-866-5237

Hours: Mon.-Fri. 8 a.m. - 9 p.m.; Sat. 8 a.m. - 6 p.m.

ROUTE 422  
MYERSTOWN, PA



**02 Dodge Dakota R/T, 2wd,**  
Blue, 5 9 V8, AT, AC, PW, PL, CC,  
Tilt, AM/FM/Cass/CD,  
Keyless-entry,  
19,605 Mi **\$13,900**



**02 Dodge Ram 1500 SLT, 4x4,**  
Crew-Cab, Black/Gray, 5 9 V8,  
AT, AMFMCAS, AC, PW, PL,  
CC, Tilt,  
21,530 Mi **\$23,900**



**01 Jeep Grand Cherokee Limited 4x4,**  
Silver, 4 7 V8, AT  
AC, PW, PL, CC, Cass & CD,  
Sunroof, Leather, Heated-  
seats, CD-Changer,  
67,875 Mi **\$16,900**



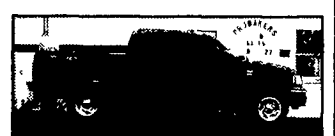
**01 Chevy Silverado, 2500HD,**  
4x4, White 8100 V8 AT  
AMFMCAS, AC CC Tilt  
9200/GVW  
3,360 Mi **\$19,900**



**Truck & Trailer:** 1995 Freightliner non-CDL, Cummins  
Engine, 6 Speed Manual. Very Clean Truck, **\$13,800 OBO**  
2001 32' Gooseneck Trailer, Good Condition, **\$5,500 OBO**  
**(717) 729-2139**



**01 Pontiac Aztek, 2wd, White,**  
3400 V6, AT, AC PW, PL, CC  
Tilt, Trac-Control, Pwr-Sun-  
roof, AM/FM/CAS/CD, Keyless  
52,390 Mi **\$10,900**



**00 Ford Ranger Trailhead,**  
2wd, Red, 3 0 V6, 5sp, AC, CC,  
Tilt, AM/FM/CD,  
34,346 Mi **\$8,800**



**00 Chevy Venture Ext,**  
Cargo-van, White, 3400 V6  
AT, AMFMCAS, AC, PW, PL,  
CC, Tilt, Keyless-Entry, 61,740  
Mi ..... **\$7,800**



**00 Ford Windstar SE, Quad-**  
Seats, Black 3 8 V6, AT  
AMFMCAS PW PL CC Tilt  
Dual-AC, Pwr-Seat, Pwr-Slider,  
RSS, Keyless-Entry, 34,560  
Mi **\$13,900**