

## PRODUCE MARKETS

### Philadelphia Fruit

Terminal Market  
March 5, 2003

Report Supplied By USDA

CITRUS FRUITS - CLEMENTINES OFFERINGS INSUFFICIENT TO QUOTE - GRAPEFRUIT MARKET ABOUT STEADY 4/5 buctns FL U.S. One Indian River Red 23s 10.00 27s 9.00-10.00 32s 9.00-10.00 36s 9.00 40s 9.00 48s 8.00 56s 8.00 Interior Red 27s 6.50 32s 6.00-7.00 36s 6.00-7.00 40s 5.00-6.00 48s 5.00-6.00 - LEMONS MARKET ABOUT STEADY ctns CA Shprs Choice 95s 12.00-13.00 115s 12.00-13.00 mostly 12.50-13.00 140s 12.00-13.00 mostly 12.50-13.00 165s 12.00-13.00 200s 12.00-13.00 - LIMES MARKET ABOUT STFDY 10 lb ctns MX 42s 7.00-7.25 48s 7.00-7.50 54s 7.25 40 lb ctns MX 150s 18.00 ord cond 10.00 175s 19.00-21.00 few 22.00 200s 20.00 - MISC CITRUS: ctns CA Pummelo 18s 10.00 10 lb ctns FL Kumquats 12.00 - ORANGES MARKET ABOUT STFDY ctns CA Shprs 1st Grade Navel 48s 14.00-14.50 56s 13.00-14.00 mostly 14.00 72s 12.00-13.00 mostly 12.00 88s 11.00-12.00 113s 10.00 Shprs Choice Navel 56s 9.00-9.50 72s 9.00-9.50 88s 9.00-9.50 4/5 buctns FL Valencia 56s 10.00 64s 7.00-10.00 mostly 8.00-10.00 80s 10.00 100s 9.00-10.00 125s 7.00-10.00 Red 100s 9.00 Pineapple 100s 8.00 - TANGELIOS OFFERINGS INSUFFICIENT TO QUOTE.

TANGRINES 4/5 buctns FL Honey 80s 17.00 100s 13.00-16.00 some 12.00 150s 15.00 - TEMPIFS OFFERINGS LIGHT 4/5 buctns FL 100s 8.00

BERRIES - BLUEBERRIES MARKET ABOUT STFDY flts 12 4-4-oz cups with lids CI med-lge 22.00-26.00 mostly 24.00-26.00 fair cond 10.00-14.00 - CRANBERRIES OFFERINGS INSUFFICIENT TO QUOTE

- MISC BERRIES flts 12 5-6-oz cups with lids MX Blackberries 15.00-16.00 - RASPBERRIES MARKET ABOUT STEADY flts 12 6-oz cups with lids CI Red 18.00 - STRAWBERRIES MARKET LOWER flts 12 1-pt bkts CA med-lge 9.00-12.00 mostly 10.00-12.00 FL med-lge 4.00-8.00 mostly 4.00-6.00 fair cond 3.00 flts 8 1-lb ctns with lids FL med-lge fair cond 3.00-4.00

MELONS - CANTALOUPS MARKET HIGHER 1/2 ctns CR 12s 12.00-13.00 mostly 13.00 15s 12.00-13.00 HD 9s 8.00-9.00 - HONEYDEWS MARKET ABOUT STEADY 1/2 ctns CR 6s 13.00 - MISC MELONS OFFERINGS INSUFFICIENT TO QUOTE - WATERMELONS MARKET STEADY ctns per ctn CR Red Flesh Seedless Type 4s fair cond 12.00-14.00 5s fair cond 10.00-12.00 MX Red Flesh Seedless Type Long Varieties 5s 15.00 Round Varieties 5s 20.00-21.00 mostly 20.00 Sangria 3s 20.00

NON-CITRUS FRUITS - APPLES MARKET ABOUT STFDY ctns trypk CA U.S. Fey Granny Smith 64s 15.00 72s 15.00 80s 15.00 CONTROLLED ATMOSPHERE STORAGE ctns trypk WA WAEXFey Red Delicious 64s 16.00 88s 16.00-17.50 100s 16.00-16.50 113s 16.00-16.50 125s 16.00 Golden Delicious 64s fair cond 14.00 72s fair cond 14.00 80s 21.00 88s 21.50-22.50 Granny Smith 88s 18.50 one label 28.50 Gala 88s 24.50-26.50 100s 24.00 ctns celpk NY U.S. EXFey McIntosh 100s 27.00-28.00 Cortland 100s 26.00 U.S. One McIntosh 100s 14.00-14.50 Cortland 100s 15.00 - APRICOTS OFFERINGS INSUFFICIENT TO QUOTE

- AVOCADOS MARKET ABOUT STEADY ctns 2 lyr MX Hass 48s 25.00-26.00 mostly 26.00 occasional higher - BANANAS MARKET STEADY 40 lb ctns IMPORT 14.50 fair qual 12.00-12.50 mostly 12.50 sml 10.00-10.50 petite 13.50 Baby 13.50 40 lb ctns bagged

IMPORT 12.50 - CHERRIES OFFERINGS NONE - FRUITS OTHER: ctns 1 lyr FI Carambola - Star Fruit 20s 15.00 25s 15.00 30s 15.00 - GRAPES MARKET ABOUT STEADY 18 lb lugs bgd CI Thompson Seedless exlge 21.00 lge 16.00-17.00 mostly 17.00 med-lge 13.00-14.00 ord cond 5.00 poor cond 1.00-3.00 Flame Seedless exlge 18.00 one label 21.00 lge 12.00-14.00 occasional 15.00 med 10.00 sml-med fair cond 7.00-8.00 Black Seedless lge 19.00 med-lge 16.00 med 14.00 fair cond 6.00-8.00 Crimson Seedless lge 16.00-17.00 SF Black Seedless lge fair cond 6.00-8.00 Red Globe exlge 14.00-16.00 mostly 16.00 lge 12.00-14.00 - KIWI FRUIT MARKET STEADY flts 1 lyr IT Hayward 30s 5.00 33s 5.00 9 kg ctns IT Hayward 33 sz 20.00 - MANGOES MARKET ABOUT STEADY ctns 1 lyr HT Francis 9s 7.00 MX Ataulfo 16s 13.00 PE Kent 7s 6.00-6.50 8s 5.50-6.00 9s fair cond 5.00-5.50 10s fair cond 5.50 poor cond 1.00-2.00 PR Keitts 7s 5.50 - NECTARINES MARKET STEADY ctns/lugs 2 lyr trypk CL Various Yellow Flesh Varieties 30 series 12.00-13.00 50 series 8.00-9.00 - PAPAYA MARKET ABOUT STEADY 4 kg containers BR Solo 8s 7.50-8.00 fair cond lower 9s 7.50-8.00 fair cond lower 10s 7.50-8.00 fair cond lower BZ Yellow Flesh 8s 9.00 few 10.00 9s 9.00-10.00 mostly 9.00 10s 9.00-10.00 mostly 9.00 GU Yellow Flesh 8s 9.00 few 10.00 9s 9.00-10.00 mostly 9.00 10s 9.00-10.00 mostly 9.00 35-40 lb ctns BZ Maradol 25.00 MX Maradol ord cond 8.00-10.00 - PEACHES NO SALES REPORTED - PEARS MARKET ABOUT STEADY 18 kg ctns AG CAT I Bartlett 70s 21.00 80s 20.00-21.00 90s 20.00 100s

16.00-18.00 CONTROLLED ATMOSPHERE STORAGE 4/5 buctns wrpd WA U.S. One D'Anjou 70s 18.50 80s 19.50 90s 19.50 100s 19.50 110s 19.50 Bosc 70s 28.50 80s 28.50-29.00 fair cond 18.00 90s 28.00-28.50 100s 26.00 WAEXFey D'Anjou 80s 23.00 90s 22.00 - PERSIMMONS TOO FEW SALES TO QUOTE

- PINEAPPLES ctns 1 lyr CR 7s ord cond 5.00-6.00 - PLANTAINS MARKET ABOUT STEADY 50 lb ctns CB Yellow 16.50 EC Green 16.50 few 18.00 - PLUMS MARKET STEADY ctns/lugs 2 lyr trypk CL Interspecific Type Flavorich 44s 13.00 48s 13.00 60s 11.00-12.00 occasional 13.00 ctns/lugs 2-lyr trypk CL Larry Anne 40s 14.00 50s 12.00 60s 10.00 - POMEGRANATES OFFERINGS NONE - PRUNES OFFERINGS NONE

### Philadelphia Vegetables

Terminal Market  
March 5, 2003

Report Supplied By USDA

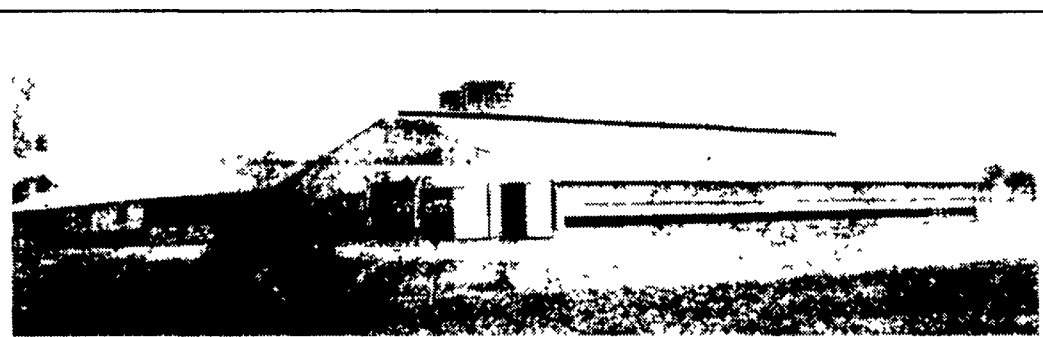
VEGETABLES - ARTICHOKEs MARKET STEADY ctns CA Globe Thornless 30s 9.00-10.00 36s 9.00-10.00 - ASPARAGUS MARKET ABOUT STEADY pyr ctns/crts 28 lb bchd MX Green lge 26.00-28.00 few 29.00 std 26.00-30.00 mostly 26.00-28.00 11 lb ctns/crts bchd MX Green 12s lge 13.00-14.00 12s std 13.00-14.00 12s sml 11.00 15 lb ctns bchd MX Green Tips std 18.00 - BEANS MARKET SLIGHTLY LOWER buctns/crts FL Round Green Type 14.00-16.00 few high as 18.00 fair qual 12.00 Handpicked 16.00 5 lb ctns GU Hercul Vert (French Type) 10.00 - BEETS MARKET ABOUT STEADY ctns bchd TX 12s 9.00 25 lb filmbags lse CD med 4.50-6.00 TX lge 5.00 50 lb sks lse TX med 10.00 - BROCCOLI MARKET ABOUT STEADY ctns AZ bchd

14s 9.00-11.00 few 8.00 CA bchd 14s 9.00-10.00 few 8.00 20 lb ctns lse AZ Crown Cut 12.00-13.00 CA Crown Cut 10.00-12.00 - BRUSSELS SPROUTS MARKET ABOUT STEADY 25 lb ctns MX few 17.00 - CABBAGE MARKET SLIGHTLY HIGHER 1 1/4 bucrts & 50 lb ctns FL Round Green Type med 10.00-12.00 Red Type med 15.00 NY Red Type med few 11.00 TX Round Green Type med 11.00 50 lb sks NY Round Green Type med-lge 10.00 Red Type med few 10.00 1 1/4 bucrts & 40 lb ctns FL Savoy Type med-lge 15.00 - CARROTS MARKET ABOUT STEADY sks 48 1-lb filmbags CA Topped med-lge 13.00-14.00 TX Topped med-lge 10.00 sks 10 5-lb filmbags TX Topped med-lge 9.00-10.00 50 lb sks lse CA Topped jbo 12.00-13.00 fair cond 10.00 CD Topped jbo 7.50-8.00 ctns bchd CA Bunched 24s 12.00 ctns 20 1-lb filmbags CA Baby Peeled 13.00-14.00 - CAULIFLOWER MARKET ABOUT STEADY ctns flmwrpd CA 12s 10.00-12.00 - CELERY MARKET ABOUT STEADY ctns CA 2 dz 14.00 2 1/2 dz 13.00-16.00 filmbags 30s 18.00 FL 2 dz 13.00 few 14.00 MX 2 dz few 14.00 2 1/2 dz few 14.00 - CHINESE CABBAGE MARKET ABOUT STEADY 50 lb ctns FL Nappa 12.00 - CORN-SWEET MARKET ABOUT STEADY flts/ctns flmwrpd FL Yellow 4-4 1/2 dz 10.00 few low as 9.00 White 4-4 1/2 dz 10.00 few low as 9.00 Bi-Color 4-4 1/2 dz 10.00 - CUCUMBERS MARKET ABOUT STEADY flts/ctns flmwrpd CD CDOne Long Seedless med 12s 9.00 sml 12s 8.00-9.00 WAXED 1 1/9 buctns/crts MX med 26.00 fr qual 20.00-22.00 ord qual 18.00 UNWAXED 1 1/9 bucrts MX Pickles 200-300s 25.00 - EGGPLANT MARKET HIGHER 1 1/9 buctns/crts MX 18s 10.00-12.00 24s 10.00-12.00 5 kg

(Turn to Page A13)

**KEYSTONE CONCRETE PRODUCTS INC.**

477 East Farmersville Rd.  
New Holland, PA 17557  
(717) 355-2361



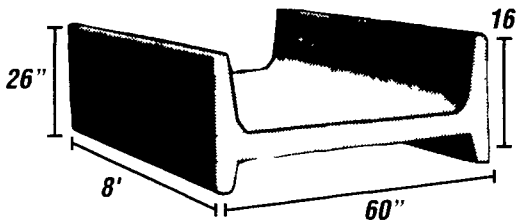
### Concrete Slatted Free Stall Barn



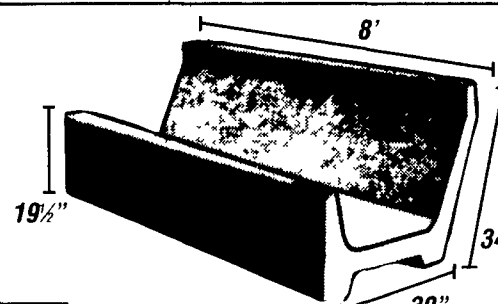
### Long Core Cattle Waffle Slats



Precast Concrete T-Wall Bunker Silos or commodity buildings built to suit your needs. Bunkers available in 8 Ft. or 12 Ft. High



Hy-Capacity H-Bunks

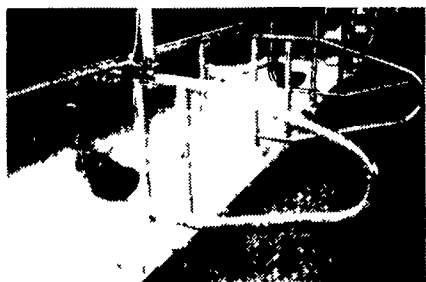


Slant Back J-Bunks

End Sections Available For Feed Bunks

Give us a call for more information on hog, beef, dairy and heifer barns.

## A COMFORTABLE COW IS A PRODUCTIVE COW



### Maximize Your Cows' Productivity With... The Comfort Zone Tie Stall

- ✓ Higher neck rail improves ease of standing, eating, and drinking
- ✓ Available in high quality 304 stainless steel or galvanized steel
- ✓ Perfect for new or remodeled dairy facilities

### For Additional Cow Comfort, Bring the Pasture Indoors with...

**PastureMat®**

Most durable top cover on the market



PM Plus provides an extra layer of cushioning

The rubber-filled cow mattress system that provides the resilience of natural turf

US Patent # 5957195 The multi-celled mattress proven to retain its shape

## Petersheim's Cow Mattresses

117 Christiana Pike, Christiana, PA 17509

610-593-2242

PROMAT LTD.

Serving DE, MD, NJ, PA, and Western NY for 9 years!