

# SOUTHERN PA CONTRACTORS AUCTION

## Friday, March 7th, 2003 at 8:30 AM

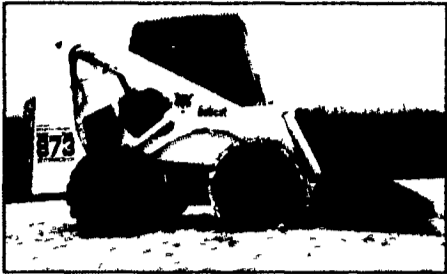
### YORK SPRINGS, Pennsylvania - Off Rt 15



Sponsored by  
**ASSOCIATED BUILDERS  
& CONTRACTORS,  
Keystone Chapter**

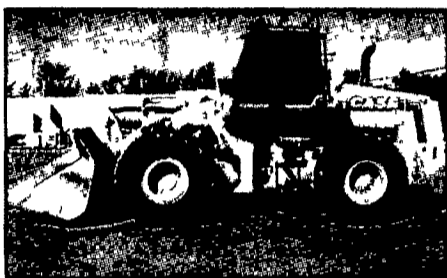
PARTIAL LISTING ONLY - New Items Added Daily

**CRAWLER LOADERS:** CAT 963, Orops, GP bkt, S/N 21Z00617; CAT 963, Orops, CAT 963 Erops, gp bkt, 3rd valve, S/N 21Z00814, CAT 953C, Orops, GP bkt; 2 - CAT 953 Erops, gp bkt, A/C, nice: CAT 953, LGP, Erops, mp bkt, 3rd valve, S/N 5Z00207, CAT 953, Orops, GP bkt; CAT 953 Orops; CAT 931B, Orops, mp bkt, S/N 25Y0499; Liebherr 631B, cab, gp bkt, S/N 631B/829; JD 755B, Orops, GP bkt; CAT 955L, cab, 13X series; JD 655B, mp bkt; '98 JD 455G, 1,000 hrs, S/N 845802; JD 455E, GP bkt; DRESSER 100G, Orops, MP bkt; JD 450; Case 450B, mp bkt.



**DOZERS:** JD 850 Orops, std bld w/tilt, winch, JD 750B, Orops, 6-w; CAT D5C, Erops, 6-w; CAT D5C, LGP, Orops, 6 way, S/N 3MK00391; CAT D4H, LGP, Orops, PAT blade, 32" pads, S/N 9DB810; CAT D3C, 6-w; CAT D3B, 6-w, CAT D4C XL III, 6-w, CAT D4H XL III, 6-w, CAT D4H, Orops, 6-w; DRESSER DT8E, 6-w; '98 JD 550G LT crwldr dozer, S/N JGG255618, Orops, 6-w, 24" pads, low hrs, JD 450G, LGP, cab, 6-w, DRESSER TD8H 6-w dozer, good u/c, low hrs; CAT D4C, 6-w

**HYDRAWATERS & ATTACHMENTS:** KOMATSU PC 400 LC; CAT 300, LINKBELT LS 4300 LC, S/N LE2153963T, KOBELCO 270LC, S/N 840063, HITACHI EX-200; CAT 312, CAT E-120B, CAT E-110B, HITACHI EX-100, KOBELCO 130 S/N WP72392; HITACHI EX-120, A/C, cab, KOMATSU PC 60; BOBCAT 325 mini rubber tracks, w/lev bld; IHI 18J mini rubber tracks w/lev bld; (2) YANMAR B-50 mini exc w/rubber tracks; CAT 214 rt exc; Like new Hyd Hammer, fits Komatsu PC 400.



**LOADER BACKHOES:** CAT 426C, IT, quick coupler, 4x4 Erops, mp bkt, weinroy swivel attachment, forks, 24" bkt, S/N 1YR00382; '99 CAT 416C, Erops, 4x4, ext hoe, ride ctrl, 1700 hrs; CAT 416C 4x4, cab, ext hoe, CASE 590 4x4, cab ext hoe; '99 CASE 580 SL 4x4, cab A/C, ext hoe, ride ctrl, CASE 580 SL 4x4, cab ext hoe; '99 CASE 580L A/C cab, 1,600 hrs, S/N JGG0245471; CASE 480 E, 4x4, CASE 580C cab; CASE 580 Super D; CASE 580K, 4x4, cab ext hoe; CASE 580 SK 4x4, cab ext hoe, CASE 580 SL, 4x4, cab ext hoe, CASE 580 SL 4x4, cab ext hoe, multi bkt, CAT 416B, 4x4, cab, ext hoe, 98 JD 310E, 4x4, cab ext hoe, JD 310D, 4x4, cab ext hoe; JDB 215E ldr bkho, S/N 433705, Erops, 4x4, extendahoe, low hrs, JCB 1700B, 4x4, cab ext hoe, JCB 1400B, Orops, 4x4, ext hoe, CASE 680E, JD 410C 4x4, CASE 580E 4x4, JCB 214 II, Erops, 4x4, ext hoe, CASE 580 SE, cab ext hoe, CASE 580E TLB Erops, ext hoe.

**SKIDDER LOADERS:** '98 CASE 821 C, cab A/C 4 yd bkt, ride ctrl; CAT IT-14-G; CAT 936 Erops, CAT IT 28B cab, 2-1/2 yd bkt w/quick coupler; VOLVO L-70 cab, mp bkt, quick coupler, VOLVO L-70 Erops, GP bkt, S/N 60633; JD 544B, cab, JD 544D, cab; (3) JD 544, GP bkt, FIAT ALLIS 645B.



**SKIDDER LOADERS:** '00 CASE 90 XT, high flow; '99 CASE 85XT, low hrs, CASE 75XT; '00 BOBCAT 873, cab, heat, A/C; '01 NH LS-190; CASE 1840; CASE 1835B; CAT 216, 600 hrs; '01 NH LS-160 turbo; NH LX-865 turbo, 2 spd; NH LX-665; BOBCAT 864 R track skdstr; BOBCAT 853; BOBCAT 7753 w/709 bkho attachment; BOBCAT 751F w/Erops; BOBCAT 642B; BOBCAT 453G; BOBCAT 753, GEHL 6635 DXT, 2 spd; JD 270, 1,000 hrs, JD 240; '98 NH LX-665, '98 CASE 1845C skdstr, Orops, aux hyd, 1500 hrs, S/N JAF0242131; GEHL 5625, CASE 1840; MUSTANG 960, MUSTANG 940.

**MOTOR GRADERS & SCARIFIERS:** CAT 12G, cab, front scarifier, new rubber, nice; CLARK 301P grader, Erops, scarifier; M-600 HUBER maintainer w/front bld, Grafion T-500 A, Erops, scarifier, all hyd, S/N IC6830, Dresser 412B, Erops, exc elevating system, S/N 17080

**OFF ROAD DUMPS:** TEREX 3066C, Cummins pwr, S/N A5221122B; (2) CAT D25D, S/N's 1HK00408, 1HK00424.



**PAVERS:** BLAW KNOX PF 180H, JD dsl eng, S/N 18016/13, BARBER GREENE 225B, 8' w, JD dsl, S/N BG225X139; GILL CREST 813, 8' Isuzu dsl eng, S/N 2773; BLAW KNOX PF-500, JD dsl, S/N 5001213

**ROLLER:** Hamm 2210, 54" vibratory smooth drum roller, Deutz dsl, S/N 31716; HYPAC C852B vib compactor w/shell kit, 84" drum w/leveling bld, Cummins dsl, S/N B188C20420T; I R SD 40D; HYSTER 850B vib compactor, sm drm, Detroit dsl, S/N T188C16205; BOMAG S-10-14 asphalt rlr, S/N 80423, DRESSER 4-6 ton asphalt rlr, S/N R250003U062382; DRESSER 3-5 ton S-3-5 B asphalt rlr, S/N R2400034062002, IR DD 23, VIBROMAX 252, INGRAM GB-30, IR DD 22 asphalt rlr, S/N 146322, IR DD 23 dbl drm, S/N 5617, VIBROMAX W252, S/N JKC7514709, INGRAM 8-10 ton, S/N 609107-GB30



**ORKED LIFT MANLITS:** CAT TA 63 telehandler, Erops w/heat & A/C, 6,000 lb, 41' 4x4, 1800 hrs, JCB 506C, 4x4, '91 LULL 1044 telescopic forklift, JD dsl, Orops, 10,000 cap, 42' reach tilt frame & carriage, S/N J7G5E6-128 '92 GEHL DM54 telescopic forklift, Orops 5000 cap 25' reach, '97 IR VR60B telescopic forklift, Orops 6000 cap, 36' reach, '99 CASE 586G 4x4 22 lift CAT R-60C, JCB 930, st mast GRADALL 534 shooting boom, MARK-LIFT 62C 4x4 manlift

**TRACTOR:** FORD 8210 4x4 series II cab WHITE 8510 4x4 cab A/C, heat 18 spd pwrshft trans 20 8x42 rubber dual pto, 170 hp 100 hrs WHITE 6125 4x4 cab A/C heat 20 8x38 rubber 18 spd pwrshft, dual pto 1,100 hrs, WHITE 6510 4x4 cab A/C, heat shuttle trans w/quick attach ldr WHITE 6085 4x4 cab A/C heat 18 4x34 rubber shuttle trans, WHITE 6065 18 4x30 rubber shuttle trans, FORD 7740 tractor w/boom mnt, 1070 hrs, KUBOTA B8200 tractor, KUBOTA B5200 4x4 tractor

**KUHN ATTACHMENTS:** KUHN ATTACH 500 diskbine 11.6 cut 540 1000 pto gyro dyne hitch, KUHN 7301 21" rotary fold up rake 540 pto, KUHN TC 300 diskbine 9.6 cut, KUHN 381 GI 13-1/2 rotary rake 3 pt 540 pto

**SALE CONDUCTED BY**  
**Wolfe**  
INDUSTRIAL AUCTIONS, INC.  
1978 25th Anniversary 2003

Contact: wolfeauctions@msn.com www.wolfeauctions.com (800)443-9580 • (301)898-0340  
9801 Hansonville Rd., Frederick, MD 21702 PA # AY-000206-L

**SURVEY EQUIPMENT:** 2- New '03 Proshot L-3 rotating slope laser level, 2- '03 Robo Laser laser level w/remote, 2- '03 Geotop 28X, auto levels, 2- '03 24X, auto levels, all with adj tripod, grade rode & 1 yr warranty.

**MISC EQUIP:** BORVAC model 50034 DJ T/A trl mtd w/hyd dump, Kubota dsl eng, 500 gal cap, water pump, 15 hrs, new; HEPE-VAC 522 trl mtd w/bulk shredder, JD dsl eng; REINCO M800 trl mtd strawblwr w/dsl eng, Vermeer M-450 w/TS30 30" tree spade, 4x4 w/front ldr bkt, Ford indust gas eng; 6x4 GATOR w/dump, low hrs; New 10.00 & 12.00 x 16.5 Galaxy skdstr tires.

**PARALLEL TRACTORS:** Hyster C 615B, Runs & vibrates, JD 2850 Ag tractor; Clete trac, runs.

**ROAD TRACTORS:** '93 Mack CL 753, Tri-axle, day cab tractor, 3rd life axle, 460 CAT dsl, 15 spd trans, 44,000 rears, wetline, Jake brake; '90 Mack, Ctl, 613 T/A, day cab, 2060 trans, wetline, long wheel base; '93 Mack t/a ctl model w/sleeper, 400 hp, 9 spd, 40,000 rears on air ride susp

**TRUCKS:** (30) '97 MACK RD 688S, Tri/A w/E-7 350 hp Mack dsl, Jak, 8LL trans, 18,000 fronts, 44,000 rears, air lift 3rd axle, 16' J & J alum dump body w/tarp; '99 Ford F-550 crew-cab dump w/ utility body sides Powerstroke dsl, auto, 56,000 mi; '98 FORD LN8000 S/A, Cummins dsl, 9 spd, air brks, 10' dump w/tarp; '98 FORD F-800 S/A flat dump, Cummins, 6 spd, 14' body, under CDL, '97 Ford Superduty Powerstroke dsl, L pack, tool boxes, dump body, 50,000 mi; '95 IHC 4700 9' dump; '92 FORD F-800 S/A dsl, auto, 33,000 gvw; '91 IHC 4700 crewcab S/A dsl, 6 spd, air brks, 12' flat dump; '89 FORD LN 7000 S/A Ford dsl, auto, air brks, 12' flat dump; '91 Ford F700, s/a dump, Ford dsl eng, 6 spd, air brakes; '91 Chevy Kodiak, s/a, 3116 Cat dsl, 6 spd, air brakes, '89 Mack CS, s/a, 7 spd, dsl, air brakes, 11' dump, '89 FORD LN 7000 S/A Ford dsl, auto, air brks, 10' dump w/tarp, low mile Municipality trk, '85 Ford F700 s/a dump.

**BOX TRUCKS:** '96 IHC 4700 dsl, auto, under CDL, 24' bx, '98 FORD F700, gas, auto, 24' box, (4) '96-'99 MITSUBISHI dsl, auto, 14' bx, '96 FORD SD, gas, auto, 12' bx; '92 GMC Topkick, Cat dsl, 6 spd, 26K gvw, 24' bx

**SUPPORT TRKS:** '95 VOLVO FE Tri/A 60 yd cap, 30' walking flr w/mulch blwr, 8 spd trans; '97 IHC, 4700 S/A, DT-466 E, 6 spd, air brakes w/24" steel Jerr Dan Rollback body, low miles, '99 Ford F-350 crewcab, P/S dsl, auto trans, stakebody, '91 FORD SD bkt trk, dsl, 5 spd, '89 FORD F800 w/Baker Digger Derrick, 7 8 dsl, 5/2, P/S, air brks, low mi; '95 FORD F700 gas eng, 5/2 spd, under CDL, 14' flatbed '96 GMC Topkick, 3116 Cat dsl w/Prentice Knuckle boom; SEAGRAVE SR 20768, 100' ladder trk, Detroit dsl, FORD F-800 S/A w/Pittman pole body

**CAB & CHASSIS:** '90 MACK DM model T/A, 44,000 rears; '87 MACK MR model T/A 44,000 rears; '97 FORD SD, dsl eng, auto; '90 Ford L-8000, S/A C&C, Ford, Dsl, 8 spd, 65,000 mi; '94 FORD L8000 8.3 dsl, 6 spd; '91 FORD F700, 7.8 dsl, Allison auto, air brks under CDL; '89 FORD F700 6.6 dsl, 5/2 spd

**UTILITIES:** (2) '00 FORD F-350 ext cab, 4x4, enc util, V-10, auto, 50K mi; '97 Ford Superduty gas 5 spd 62,000 mi; '97 FORD F-350 4x4 V-8, auto, util; '93 GMC 3500 HD, enc util, gas, auto; IHC 1854 S/A flatbed, gn hitch DT-466, 5/2

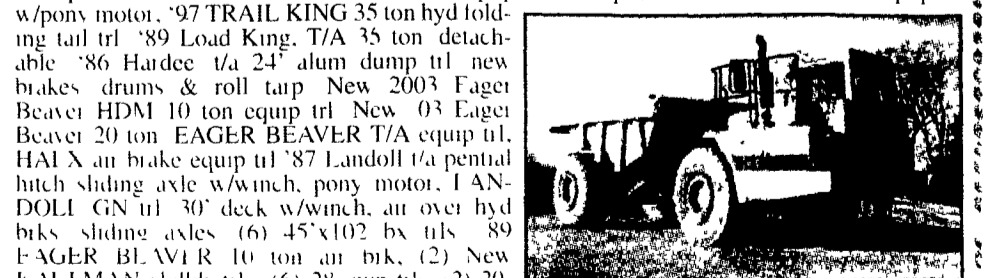
**MECHANICS TRKS:** '01 Chevrolet 3500 HD dsl eng, mechanics trk w/ Koenig utility body, Koenig 3200 crane, Bobcat welder, IR air compressor, air reels & more, low miles; '00 Ford F450 Powerstroke dsl, 6 spd, IMT mechanics body w/IMT 3820 crane, outriggers, hyd air comp, 80,000 mi, nice trk, '97 FORD F450 SD mechanics trk, Pwrstroke dsl, 5 spd, air comp, wldr, IMT 2015 mech crane; '92 CHEVY 3500 HD mech trk, 7.4, V-8, auto trans w/auto crane, '90 Ford Superduty, dsl eng, 5 spd w/IMT mechanics body, IMT crane, underhead air comp, '89 CHEVY 3500 wldrs trk w/Muller wldr, gas, auto, FORD L9000 S/A enc fuel & lube trk

**GENERATION TRKS:** (2) '91 GMC 3500 bkt trks w/generators, gas, auto, (2) '91 CHEVY High cube w/generator, air comp & htr, (2) '94 DODGE Cargo vans; (2) '92 DODGE cargo vans

**TRUCKS:** '01 Ford F-350 crewcab 4x4 dsl, auto, '01 FORD F-250 XLT, 4X4, ext cab, V-8, auto, '01 DODGE 2500 ext cab, V-8, auto, '01 Chevrolet 1500 ext cab pu Silverado, V8, auto, '00 FORD F-250 ext cab, 4x4, V-10, auto, '00 CHEVY 2500 ext cab, 4x4, V-8, auto, '00 FORD F-250 ext cab, dsl eng, '99 FORD F250 crewcab, 4x4, V-10 auto; '99 FORD F-350 crewcab, V-8, auto, '99 FORD F-250 XLT ext cab, V-8, auto, '99 FORD F-250 V-8, auto; '98 CHEVY 2500 ext cab, 4x4, V-8, auto, '98 Ford F150, ext cab, XLT, V8, auto; '97 FORD F-250 XLT, 4x4, V-8, auto, '97 CHEVY 2500 crewcab pu, '97 FORD F-250 V-8, auto; '97 FORD F-250 4x4, auto, gas, '96 FORD F-250 dsl, 5 spd, '95 & '96 FORD F-250, gas, 5 spd, '96 Dodge 1500 SLT, 4x4, V8, 5 spd, (2) '91 FORD F-250 4x4 '89 FORD F-150 4x4

**TRAILERS:** 2002 Interstate 50 ton detachable equip trl, 4 axle, 3rd air lift axle, 4th flip axle, air ride susp, self contained, like new trl, '03 Witzco Challenger, 50 ton tri-axle detachable trl, FET pd, '03 Witzco 35 ton, t/a detachable equip trl FET pd, 50 Ton Tri/A detach equip trl w/pony motor, '97 TRAIL KING 35 ton hyd folding tail trl, '89 Load King, T/A 35 ton detachable '86 Hardee t/a 24' alum dump trl new brakes drums & roll tarp New 2003 Fager Beaver HDM 10 ton equip trl New '03 Fager Beaver 20 ton EAGER BEAVER T/A equip trl, HAI X air brake equip trl '87 Landoll t/a pentail hitch sliding axle w/winch, pony motor, LANDOLL GN trl 30' deck w/winch, air over hyd brks, sliding axles (6) 45"x102 bx trls, '89 EAGER BLAVER 10 ton air bkt, (2) New KAUFMAN skldlr trls (6) 28' pup trls, (2) 20' Sea Cont (2) 40' Sea Cont Hurst 9 ton F conolme t/a equip trl

**SULAIR 175** an comp w/JD dsl, Contractor tools, Jackhammers, Chains, Binders, Plate steel & much more too numerous to list



**Auctioneers Note:** This is a very large auction. There will be 2-3 auctioneers selling at once please come prepared for this.

Complete Payment On Sale Day with CASH or CASHIERS CHECK. Company or Personal check accepted only if accompanied by a Current Bank Letter of Guaranteed Payment. Visa & Mastercard accepted - a 5% administrative fee charged on all non-cash/non-check purchases.

CONTACT BY March 3rd - Telmark LLC at 800-451-3322 or Keystone Leasing Co at 800-444-8333, ext 168

UPDATED LISTS AVAILABLE ON OUR WEBSITE:  
[www.wolfeauctions.com](http://www.wolfeauctions.com)