

### Public Auction Register

WED MARCH 26 - Farm Equipment Sale, 109 N. Maple Ave., Leola, PA, Wolgemuth Auctions, AU 2357

THURS MARC 27 - Farm mach, Holstein dairy heifer, PP property, furn, 2071 Windsor Rd., Narvon close to Churchtown, Lanc Co PA, terms by Martin & Eva Shirk Kline, Kreider & Good #2116

THURS, MAR 27 - 9AM - RE 11AM Real estate & farm equip at 283 Isabella Rd, West Nantmeal Twp, Chester Co Terms by Oliver S Mast by Horning Farm Agency, Inc 610-286-5183 AU-2417 L

FRI MAR 28 - 10AM Public Auction - farm machinery, tractors, trucks, turkey equipment, grasshopper & JD mowers 1430 Turkey Farm Rd., East Earl, PA Kline, Kreider & Good, Aucts 717-445-4309 #499, #2116, #3433

FRI MARCH 28 - 10AM Public auction farm equip & mach, from Selinsgrove Ford, Rt 522S 4 3/10 mi, L onto Pawling Station Rd, 2/10 mi to auct on R by Roger A Lauer Auct AU002634L, 570-374-4793, or 570-374-4224

FRI MAR 28 - 1PM State Graded Feeder Pig Sales Carlisle Livestock Market, Inc 548 Alexander Spring Rd., Carlisle Market phone 717-249-4511, Buyer's phone 717-249-0396, Fax 717-249-5507, Jim DeGaetano - Home 717-249-2359

FRI, MAR 28 - Tack (6PM) Horses (6PM) Horse consignment sale at Penns Valley Livestock, Centre Hall, PA (corner of Rt 45 & 144) by Mel Hoover Auct AU--003111-L 814-349-5099

SAT MARCH 29 - Delaware Valley Green & Gold Sale, Doylestown, PA, Auct Cattle Exchange

SAT MAR 29 - Public Lawn & Garden Consignment Auction Riding mowers, push mowers, chainsaws, weed-eaters, small utility tractors, rototillers, etc. Philip Hurst, Auctioneer, 717-949-2771.

Butcher equip Blacksmith tools, misc items from farm, older tractors, farm equip at 5550 Smith Drve, Mechanicsburg, PA near Wertsville off of Good Hope Rd near Rt. 81, Rick Foreman AU1163L, Darryl Jones AA2759L, 717-776-4602, John Smith, owner.

SAT MARCH 29 - 8AM Consignment Sale of Tractors, Farm & Const Equip, HH Items, Livestock, Etc., Annville Fire Company, 301 Frosty Hill Road, Annville, PA, From Rt. 74 take 425S, 1 M to R on Frosty Hill Road, Approx 1 Mi to Sale, Omar Stoltzfus, Auct

SAT MARCH 29 - 8:30AM Antiques, collect, furn, post cards, cast iron toys, tools, 33 Cherry Hill Rd, Paradise, Miller & Siegnst AU1723-L

SAT MARCH 29 - 9AM Mel's Stables Horse Sales - Stallion Presentation Day, Auctioneer, 834 Wallace Rd., New Holland, PA 17557, Home 717-354-8397, Barn 717-354-6431

SAT MARCH 29 - 9AM Tractors, combines, trucks, cars, lawn & garden equip. Norman Parker Farm 146 Jacobs-town-Crookstown Rd Wnghtstown NJ Michael J Daphars Auctioneer 609-758-8603

SAT MARCH 29 - 9AM Farm equip, furn, antiques, for Paul & Elva Lvengood, 1729 Boyer Run Rd, Manheim, PA, John D Stauffer Auct, AU--1509-L

SAT MARCH 29 - 9AM Feeder cattle, farm mach, carpenter tools For C. Elmer Warner, 15741 Gun Club Rd., New Park, York Co, by Sechnst Auctioneers

SAT MARCH 29 - Reserved for Special NY Sale

SAT MARCH 29 - 9AM Farm Mach, Trucks, Const Equip, Tools, L&G Equip., Etc., Hay & Straw, Perkiomenville Livestock & Sales Inc, Rt 29, Perkiomenville, PA, Auct NC Weidenbaugh, AU--00986-L, 610-327-2475.

SAT MARCH 29 - 9AM Chester Co real estate, masonry rancher, antiques, collect, furn, misc at 1120 Newport/Gap Pike, Cochranville, Chester Co, PA from Rt 41 and Rt 10, take Rt 41 S 1/8 mi to prop on R, watch for signs, by Barr/Davis Auct AU002422-L, 717-442-9221

### ROLAND & JUDY BEAN FARM EQUIPMENT AUCTION

Moravia, NY

Thurs. March 13, 2003 @ 11:30 AM

Auction to be held @ farm on Rt. 38A north, Moravia. From 4 Corners in Moravia, take Rt. 38A north 2 1/2 miles to farm. Farm is approx. 20 miles south of Auburn on Rt. 38A.

#### EXCELLENT LINE OF FARM EQUIPMENT

JD 7600 2wd w/Cab & Air. w/ JD 725 Loader; powershift, 5400 hrs, almost new 18 4 x 38 tires, sharp unit, JD 4640 w/ FWA/ 4wd, Powershift, Full Cab. 200 hrs on engine. sharp, JD 3155 MFWD/ 4wd w/ Cab & Air. 6,600 hrs, sharp, Case 2090 w/ Cab, Powershift, nice, IH 715 Combine w/ new gas engine w/ 843 4 row Corn Head, nice, NH 900 Harvester w/ Factory Kernel Processor, 3 yrs old w/ 824 adj 2 row Corn Head and 7' PU Head, real nice, (3) Gehl 980 Tandem Self-Unloading Wagons w/ roofs, like new, Case IH 3950 Disc, 21' Hyd Fold w/ rear hitch & hyd, 1 yr old, new, Brillion Soil Conditioner / Land Commander, 14', Disc front, 11 shank rear, Brillion 23' X Fold Cultipactor, 1 yr old, new, White 588 6 x 18" Plow w/ IH Bottoms, JD 7000 6X Corn Planter w/ Insec Boxes, monitor, all rebuilt, IH 5100 Grain Drill, 21 hoe, Soybean Special; Demco Sprayer w/ 30, Booms, 2 yrs old & like new, NH F62B Blower w/ Preservative Applicator, 1 yr old, (3) Killbros 385 Gravity Wagons, like new; Killbros 350 Gravity Wagons w/ Auger, NH 570 Baler w/ Kicker, sharp, Case IH 8312 Hydro Swing Disc Mower, NH 259 Rake, JD 660 Rake, Dual Rake Hitch, Vicon 4 Umbrella Tedder, (6) Good Wooden Hay Wagons; Shen 40' Skeleton Elevator on Wheels, 2 yrs old, Little Giant H&G Elevator, 32' H&G Elevator, 16' Skeleton Elevator, T/A PTO Fert Spreader; NH 185 T/A Manure Spreader, Generac 30 kw PTO Generator, AC B-10 Lawn Tractor w/ Blade; 1987 Chevy 4wd Pickup, Gehl 980 Wagon on S/A Gear, been wrecked - front off, Implement Wheels & tires, Nuts & bolts, 1" Elect Impact; Misc parts, etc. etc. Other small items

#### Feeding Equipment

Oswalt D250 Stationary TMR Moxer w/ 200 Digistar Digital Scale, used 17 mos, like new, 26' J Star Elec Belt Conveyor, 17 mos old; Agri Metal Bedding Chopper, 13hp Honda, 2 yrs old, Uebler 810 Power Feed Cart, nice  
**Auctioneer's Note** - An excellent line of farm equipment that has been maintained the best Mr Bean sold his cows last summer A great place to buy excellent equipment For pictures of equipment, go to our website  
**Sale Order** - 11 30 - Small Items; 12 Noon - Farm Equipment, followed by Tractors, then Feeding Equipment

Owner - Roland & Judy Bean - (315)-497-1430

Sales Managers & Auctioneers

Whitney Point, N.Y. 13862 607-692-4540 / 1-800-MANASSE

Members of NYSAA, NAA and PAA Associations

Visit our Website @ [www.manasseauctions.com](http://www.manasseauctions.com)



## Consignment Auction

MONDAY, MARCH 3, 2003 8:30 AM

Location: 251 Race St., Myerstown, PA. Rt. 501 North to Myerstown, turn L on Park St. 3 blocks to sale. I-78 to exit 13, Rt. 501 South 8 miles to Park St., turn R and 3 blocks to sale.

Consignments accepted on location 8 to 4 Feb. 26 thru Mar. 6

### Tractors & Skid Loaders

John Deere 3020 diesel, wide front; John Deere 4230, cab, air, quad range; John Deere 350 crawler loader w/4 n 1 bucket; John Deere 4240 cab, quad range; Bobcat 743 36hp diesel skid loader w/aux. hyd.; Bobcat 610, Gehl 4835 SXT skid loader; Kawasaki 2520 Mule; Case IH 695 tractor w/canopy, IH 706 diesel w/wide front & 3 pt hitch; John Deere 4020 side console w/cab, John Deere 430 utility w/3pt; Ford 860, Farmall C w/plow & cultivator, Ford 2000 gas, pow steer, NO 3pt, Ford 8N w/loader; John Deere MT, Galion 503 grader (poor condition), John Deere 'D' w/new tires, Ford 8N, Ford 9N; Farmall Super M, Farmall Super A, w/cultivator & side dresser

#### Tillage

John Deere 2800 5 or 6x auto reset plow; IH 10 4x auto reset plow; White 271 20' rock flex disc, Krause 4900 24' flex disc, DMI 24' combler; Brillion 13' cultmulcher; Miller 12' offset disc, Case IH 1830 3 pt cultivator (used 1 time), Brillion 11' transport packer, Krause 10' harrow; IH 8' 3pt field cult, Case IH 4500 16' hydro fold front end; IH 5' 3pt auto reset subsoiler Krause 14' offset disc; Miller 3x 10' plow; Ford 17' 3pt disc.

#### Hay Equipment

NH 315 baler w/thrower; John Deere 435 round baler; ME 315 baler w/thrower, New Idea 40' x 4 row round baler; John Deere 1460 mo/co; NH 254 3pt rake/tedder; 35' hay rake; John Deere 678 hay rake w/dolly; NH 456 7' pull sickle mower; NH 119 A3 auger/washer; IH 17 hay head; John Deere 39' hay head w/slip clutch; FT 8' x 7' wood hay rack wagon.

#### Grain Handling

IH 5100 corn w/prop on wheels & gas seed blower 76 13x7 DD drill w/grip; John Deere 720 6R 38' non til drag planter; IH 449 4R corn planter

#### Related Items

Gehl 120 by 145 grinder mixer w/scales; Brent 400 bu grain cart; Case IH 575 roller sprayer w/engage; Planet forks for skid loader; Ford NH 145 s. roller w/taillight; Ag Wraps 7' 3pt bale wrapper; Prairie Dog 7' 3pt backhoe attachment; Fergo side dump wagon; Zimmerman 46' corn & hay elevator; Wood 30' 1200 rpm rotary mower; Vermeer 10' 3 pt bale stacker (fork-lift), John Deere 6A flat chopper

All items are sold "as is" where "is" with no guarantees expressed or implied. Some items subject to prior sale.

Blizzard date Monday March 10th if questionable call 717-866-2130

TERMS: CASH complete payment on auction day. Checks accepted with bank letter of credit

DAVID WENGER 717-866-2135

HARRY BACHMAN 717-867-1809

GLENN WENGER 717-866-2130

DENNIS GRUMBINE 717-866-2585

AUCTIONEERS: Harry Bachman • AU-000033-L

Glenn T. Wenger • AU-002510-L Blaine Rentzel • AU-761

LEBANON VALLEY AUCTION COMPANY, INC. 2051 Horseshoe Pike Annville, PA 17003 RY000014-L



## MULTI-PROPERTY REAL ESTATE AUCTION

Up to 15 Homes For Public Sale In One Day From At The Same Location To be held at the Lancaster Farm & Home Center

1383 Arcadia Rd., Lancaster on

March 8, 2003

Auction to start at 12:00 noon

- 29 Columbia Ave., Mount Joy:**  
Single ranch home, 3BR, 1 BA Seller: Jason V. & Jennifer L. Annibali
- 5 Julie Terrace, Lititz:**  
Single 2-story, Warwick Schools, 3BR, 1-1/2 BA Seller: Samuel J. Henry
- Building Lot: 8 Oakbrook Lane, Elizabethtown:**  
..... 1.03 acres +/-, wooded setting Seller: Joseph G. Rago
- 314 Steinman Farm Rd, Pequea:**  
Single home, 3BR, 1 1/2 BA, 76 acres +/-
- 523 Main St., Denver:** Semi-detached, 3BR, 1 BA, 1280sf
- 434 E. Orange St., Lancaster:** 3 story row, 5BR, 1 BA
- 103 Charles Blvd., Sinking Spring:**  
2-story colonial w/3BR, 2-1/2 BA, Wilson Schools
- 7 W 7th St., Pottstown (Chester County):**  
Cape Cod, 3BR, 2BA, brick
- 611 N. Main Street, Bernville (Berks County):**  
Single home, 3BR, 1 1/2 BA, 2 car gar
- 2782 Butternut Ln, York** Single home, 3BR, 2 1/2 BA, 23 acres +/-
- 917 Woodland Dr., Lemoyne:** Single home, 5BR, 3 5 BA, 41 acres +/-
- 4809 Horseshoe Pike Downingtown (Caln Twp., Chester County):** large single historic home w/2,488sf, 1.1 acre lot, 3 fireplaces Seller: Central Penn Properties
- 474 Poplar St., Lancaster:** 3BR row home
- 476 Poplar St., Lancaster:** 2 unit property w/3BR's in each unit
- 544 Manor St., Lancaster:** 3BR row home Seller: Sam and Cindy Bigler

All properties are subject to prior sale, specific terms, and reserves

Open House dates: 3/1, 3/2, 3/7, 3/8 Auction Date: 3/8/03

\*Interested in Selling your home at an auction event? Call us next sale is 4/12/03 FREE Seminar on Buying and Selling at Auction is held every Monday Night from 6-8 PM .Call to register

For directions to sale, detailed property info., call 717-735-8300

[www.certainlysold.com](http://www.certainlysold.com)

Promotion by: Certainly Sold Auction Events, Inc.

Auction by: James C Lovins, Jr #AU-003799-L

## TRACTORS - TRUCKS - CARS - BOATS - FARM EQUIPMENT 30TH ANNUAL CONSIGNMENT AUCTION SATURDAY, MARCH 15, 2003 @ 9:30 AM

RT 50 & WOODYARD RD - WILLARDS, MD

Directions - From Salisbury, MD take US RT 50 East approx 10 miles to Willards, MD. At the 124 mile marker, turn left on Woodyard Rd. Sale behind our office.

CONSIGNMENTS ACCEPTED WED, MARCH 5 - SAT, MARCH 8 FROM 8:00 TO 3:00 PM, SUN FROM 10:00 TO 1:00 PM, MONDAY - FRIDAY WEEK OF SALE OR BY APPOINTMENT. AFTER HOURS DROP OFF AVAILABLE.

View on web site at [www.prauctions.net](http://www.prauctions.net)

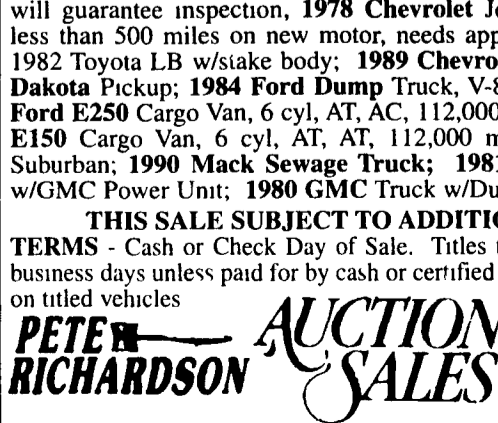
Tom West is downsizing his farming operation and will sell the following, which has been moved to our yard for convenience of sale These items are Super, Super clean

TO BE SOLD AT 11:00 AM - JD 4955 MFD, fenders, weights, quick attach, only 2946 hrs, 18 4R46 factory duals, 1990, JD 1780 Maxi-merge Planter, 23 row, no-till unit coulters, liquid fertilizers, 1 & 3 bushel seed hoppers, insecticide boxes, 2 sets of closing wheels, cast & plastic, deluxe monitor acreage & population, Shelbourne 24' striper header, 4 years old, used less than 1600 acres, Great Plains 30' no till drill, center fold, Case IH 496 disc, 28' w/boards, DMI 7 shank no till ripper w/coulters; 1978 Butler Stainless Steel Trailer w/air unload & gravity unload, 5000 gal, Dayton Wheels, exc cond; Bush Hog CR20, hydro fold rotary cutter, used less than 1500 acres; Ferguson 18' Chisel plow w/buster bar; Unverferth rolling harrow II, 30'; JD Header Cart;

OTHER CONSIGNMENTS - BEGINNING AT 9:30 AM - JD 4955, 4WD, 7003 hrs, duals; JD 4850, 4WD, duals, 9217 hrs; Brillion Cultmulcher; Intl 8 Bottom Plow; JD Plateless Planter; Side Mount Bushog; Set of Forks; American Kleaner Pressure Washer; Dayton motor Auger w/extra auger; Set of Tractor Forks; Ferguson Chisel Plow; 1980 Blawknox 500 Paver; Intl manure spreader; New Items to include Bushogs, Single & Dual Axle Landscape Trailers, Post hole diggers, Blades, and more; Cattle feeders; TOOLS inc. levels, tripods, hand tools, skill saw, air nailers/staplers, cement tools, Milwaukee saws-all, pipe wrenches, shop vac, grinder, 2 Workmate benches, hand sprayer, rakes, hoes, shovels, OTHER TRUCKS, TRAILERS, & CARS & BOAT- 1999 Duracraft, 18' Aluminum Boat w/50HP Mercury & EZ Load Trailer; 1997 Ford F150 XLT Pickup, 6 cyl, 5 speed, MD INSPECTED; 1979 Chevrolet Dump Truck, new drums, brake linings, new grease seals, all new emissions, owner will guarantee inspection, 1978 Chevrolet Jerr-dan Rollback, steel body, less than 500 miles on new motor, needs approx \$900 to pass inspection; 1982 Toyota LB w/stake body; 1989 Chevrolet S10 pickup; 1987 Dodge Dakota Pickup; 1984 Ford Dump Truck, V-8, 5 speed w/12' body; 1997 Ford E250 Cargo Van, 6 cyl, AT, AC, 112,000 miles, exc cond; 1993 Ford E150 Cargo Van, 6 cyl, AT, AT, 112,000 miles, exc cond; 1990 GMC Suburban; 1990 Mack Sewage Truck; 1981 Vac Trailer, 2500 gal tank w/GMC Power Unit; 1980 GMC Truck w/Dunbar Broom Lift, 5x2,

THIS SALE SUBJECT TO ADDITIONS & DELETIONS

TERMS - Cash or Check Day of Sale. Titles to Vehicles will be held for 10 business days unless paid for by cash or certified check. \$25 00 Buyer Premium on titled vehicles



P.O. Box 51 Willards, MD 21874 (410)546-2425 or 1(800)408-9384 email - [petesales@dmv.com](mailto:petesales@dmv.com)