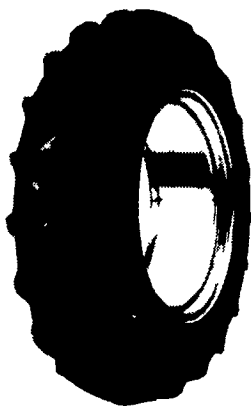


**GOODYEAR**

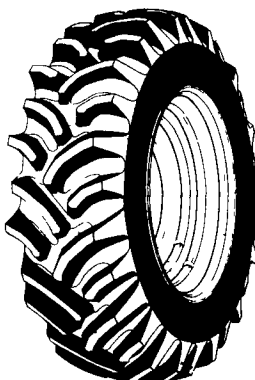
#1 in Tires

**THE RIGHT TIRE  
FOR THE WAY YOU FARM****Goodyear Bias Ply Tractor Tires****(R1) DURATORQUE ECONOMY**

Priced with Long/Long Bar

83/24 6 Ply TT	<b>\$133</b>
95/24 4 Ply TT	<b>\$123</b>
14 9/28 6 Ply TT	<b>\$229</b>
15 5/38 6 Ply TT	<b>\$265</b>

Other Sizes Available

**(R1) DYNA TORQUE II**For Excellent Drawbar Pull,  
Even High-Torque Tractors

11.2/24 4 Ply TT	<b>\$141</b>
12.4/24 4 Ply TT	<b>\$163</b>
14.9/24 6 Ply TL	<b>\$259</b>
16.9/30 6 Ply TT	<b>\$328</b>

Other Sizes Available

**(R1) POWER TORQUE**Established Tread  
Design For Tough  
Service

6-12 4 Ply TL	<b>\$38</b>
72-16 4 Ply TL	<b>\$69</b>
83-16 6 Ply TL	<b>\$91</b>
95-16 6 Ply TL	<b>\$123</b>

Other Sizes Available

**TWO  
REASONS  
YOU CAN  
COUNT ON  
GOODYEAR**Goodyear's New  
Agricultural WarrantiesSee Your Local Goodyear  
For Full Details.**Goodyear Radial Rear Tires****(R1) ULTRATORQUE  
RADIAL**Cuts Through Mud, Dirt,  
And All Kinds Of Soil

480/80R 38TL	<b>\$565</b>
420/90R 30TL	<b>\$598</b>
380/85R 34TL	<b>\$582</b>
480/80R 42TL	<b>\$707</b>

Other Sizes Available

**GOODYEAR'S  
ULTRATORQUE  
RADIAL LINE-UP**

Size	Replaces Size
380/85R28	149R28
420/85R28	169R28
380/85R30	149R30
420/90R30	169R30
380/85R34	149R34
480/85R34	184R34
480/80R38	184R38
520/85R38	208R38
480/80R42	184R42
520/85R42	208R42
380/90R46	149R46
420/80R46	169R46
480/80R46	184R46

**(R1) DYNA TORQUE RADIAL**Revolutionary High Tractor  
3-Pitch Lug Design

13.6R28 TL 3***	<b>\$437</b>
14.9R28 TL 3 ***	<b>\$534</b>
18.4R38 TL 1*	<b>\$538</b>
20.8R38 TL 1*	<b>\$727</b>

Other Sizes Available

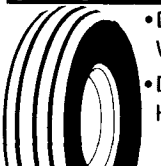
**(I-1) FARM UTILITY**

- Outstanding flotation
- Easy steering from the heavy grooved ribs

Rib Implement Tire - Easy Operation For  
Many Types of Equipment

11L-15	8 PLY TT	<b>\$53</b>
760-15	8 PLY TL	<b>\$52</b>
95L-14	8 PLY TT	<b>\$49</b>
12 5L-15	8 PLY TT	<b>\$67</b>

Other Sizes Available

**(F-1) FARM HIGHWAY SERVICE**

- Designed for Implements & 95L-15F1-6 Ply TL Wagons
- DOT Approved for Highway Speed

**\$59****TRI RIB HD**3 Rib Designed Improved Steering In  
Loose, Cultivated Soil

1000-16 8 Ply TT	<b>\$91</b>
1100-16 8 PLY TT	<b>\$105</b>

Other Sizes Available

**(F2) HEAVY DUTY HI-RIB  
(PREMIUM)**

6 Sizes Available

**KELLY TIRES****(R-1)  
POWER MARK**

2 Sizes Available

**ATV TIRES**

- TRACKER LINE-UP**  
1/2" Tread Depth Avg
- RAWHIDE LINE-UP**  
3/4" Tread Depth Avg
- MUD RUNNER LINE-UP**  
1" Tread Depth Avg

**(R4) IT 515  
HARD SURFACE**Solid Performance on  
Rock-Hard Ground**\$309**

Other Sizes Available

**(R4) IT 525  
INDUSTRIAL BIAS**Design For  
Backhoe/ Loader  
Operation**\$279****SKID STEER LOADER TIRES****IT323****PREMIUM SKID STEER TIRE**Our premium bias ply tire specifically  
developed for skid steers in heavy duty  
applications. The IT323 is designed to  
provide excellent durability, puncture  
resistance and traction performance. It's  
equipped with new premium features: a  
sidewall scuff rib and rim flange shield.**SURE GRIP LUG  
SUPER SINGLE**For use in soft soil operation where  
traction and flotation are required**LIGHT TRUCK ADVENTURE****CONQUEST AP**Your  
Choice**\$139<sup>00</sup>**

LT235/85R16

Load Range E-10 Ply

**WORKHORSE XG  
RADIAL****YOU COME TO US FOR YOUR FARM TIRES NEEDS... ALSO SEE US FOR YOUR AUTO & LIGHT TIRES NEEDS!****CLUB**  
All-Season Radial  
At A Great Price  
**\$44<sup>95</sup>**P185/70R14/BSL  
Other Sizes and Prices Available  
40,000 Mile Tread Life  
Limited Warranty**REGATTA 2**  
Durable, All-Season  
Touring Radial  
**\$69<sup>95</sup>**P175/65R14 BSL  
Other Sizes and Prices Available  
75,000 Mile Tread Life  
Limited Warranty**EAGLE GT II**  
Eagle Performance  
And Style At A  
Great Price  
**\$69<sup>95</sup>**P185/60R14 BSL  
Other Sizes and  
Prices Available**EAGLE LS**  
Quiet Riding,  
Luxury Sport Tire  
**\$79<sup>95</sup>**P195/60R15 BSL  
Other Sizes and  
Prices Available**CONQUEST AP**  
Economy All-  
Weather Radial For  
Light Trucks  
**\$79<sup>95</sup>**P225/75R15  
Other Sizes and  
Prices Available**WRANGLER RT/S**  
Smooth Riding All-Weather  
Radial Capable Of  
All-Terrain Duties  
**\$94<sup>95</sup>**P205/75R15  
Other Sizes and  
Prices Available**CALL 1-800-FARMTIRE. GOODYEAR As American As Farming.****Zimmerman Farm Service**  
On The Farm Service  
School Road, Bethel, PA 19507  
717-933-4114**H&F Tire Service**  
On The Farm Service  
1834 Lincoln Hwy East, Lancaster, PA 17602  
1-800-451-6710**Horlacher & Sherwood**  
On The Farm Service  
153 E. Tioga • Tunkhannock, PA  
570-836-1116**Donald B. Rice Tire Co.**  
On The Farm Service  
1420 Tilco Drive, Frederick, MD 21701  
1-800-407-0556**Check our Web Site @  
www.Goodyear.com**  
Click on "Tires" - Click  
on "North America Tire" -  
Click on  
"Farm & Industrial"**Lebanon Valley Imp. Co.**  
On The Farm Service  
700 E. Linden St., Richland, PA 17087  
717-866-7518**BHM Farm Equipment**  
RD 1 Rt. 934 North  
Annville, PA 17003  
717-867-2211**Mar-Bar Tire Service**  
On The Farm Service  
4285 Hanover Rd., Hanover, PA 17331  
717-633-6412**Neatons Tire**  
On The Farm Service  
25 East Ave., Easton, MD 21601  
1-800-317-6152