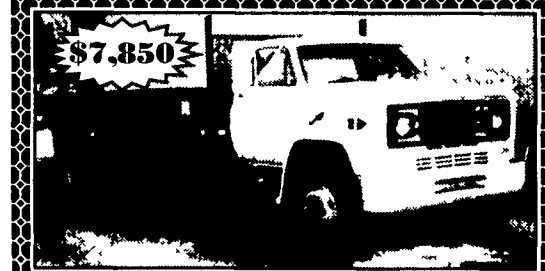




**1984 Int'l 8yd Dump Truck,**  
radial tires, set up for trailer,  
exc. cond. **\$10,000/OBO.**  
**908-439-2926**



**\$7,850**  
1985 GMC, 16' Flat Bed with Dump Hoist,  
28,000 GVW, 8.2T Diesel, 115,000 Miles,  
Frt. Tires Like New, Rear Tires Fair.  
**717-776-7725**

**35 TRUCKS AND TRAILERS**

NEW POWERSTROKE In-jectors, all numbers. 717-235-4996

Truck tire chains, double chain for 1100 R20 tire, \$200 obo. 717-665-7769

85 Mack RD 686 S, E6-300, 6spd, air shift, dbl frame, 18Kfrt 44Krs, 20ft dump w/4ft side kit, solid truck, \$16,500/obo 717-786-0934

'88 Peterbilt 379 standup bunk, 444 Cummins, less than 100,000 mi on OH, 15 spd OD, 390 rears, charcoal gray w/red & silver stripes. '91 45ft Benson trailer, spread on air, 4ft sides. 814-623-1484 after 5pm

Ford lime spreading truck, ex cond, \$6500. 717-278-5261

1999 Mack CL713 triaxle dump truck, exc shape, 100K mi. 610-279-0134 or 610-656-6905.

1976 L8000 Ford TA 1160 Cat eng, recent overhaul, rebuilt rear suspension 20' steel grain dump, \$7,000. Jefferson Co, 304-876-3146.

'81 Ford F350, 6 cyl 4 spd, has PTO, needs hoist for dump, good cond, \$2000. 16ft Rugby grain body w/hoist, good cond, \$2000. 443-243-7642

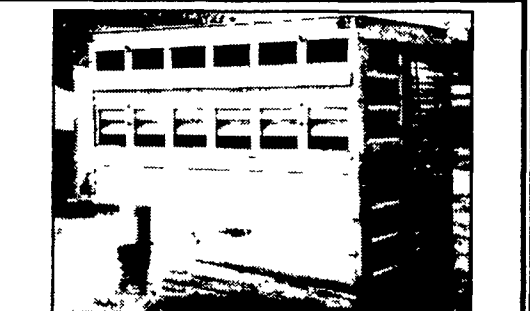
1981 359 Pete 36" bunk air 400 Cum \$8,250. 1988 Great Dane insulated van \$2,650. (2) 1994 377 Pete's 435 Cat 430 Detroit, 63" unibills \$16,500. 1997 379 Pete 460 Cum 63" bunk \$37,250. 1981 2574 Int tri dump 290, \$21,250. 570-758-1734/



**94 Ford F250 XLT 4x4 5.8L,**  
Auto Trans/Overdrive, 8' Rhino-liner,  
Gooseneck-Hitch, EXCL. COND.,  
91,000 mi., MD INSP **\$9,500** neg  
**410/399-0052 farmschreck@aol.com**



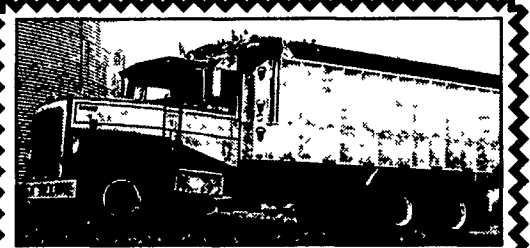
'03 Freightliner Classic Daycab, 475 Cat, 18 Spd.,  
40,000 lb Locking Rears, Air Ride, Wetline,  
Many Extras. 35,000 Miles • **\$74,900**  
**Mighty Oak Mulch • (717) 244-3099**



**Eby cattle body, fits 8' pickup bed,**  
ramp & rollup door, all openings can  
be closed, good condition **\$1,950 o.b.o.**  
Berks Co. **(717) 821-0494**



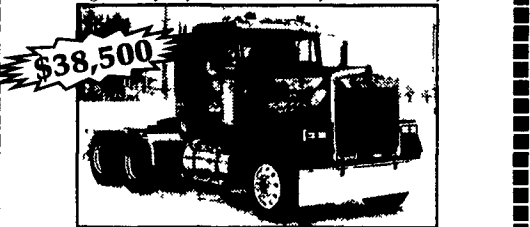
2002 GMC T6500, 7.2 L. Cat Diesel - Allison Auto Trans.,  
8,800 miles, Michelin 11 R x 22.5 tires, 25950 GVWR,  
New Inspection, Eby Aluminum 14 ft. Dump Body  
w/optional cattle racks, Eby frame mount utility box - 4  
way tailgate, Receiver hitch and electric brakes  
**Asking \$40,900**  
484/614-5140 leave message



**1976 IH 4200, 52,000 GVW,**  
330 hp, 13 speed w/1985 Eby  
alum. grain body, ex. cond.,  
**\$15,500, Elverson, Berks Co., PA**  
**(cell) 610-476-2731**



**\$27,900**  
1994 Mack 686 Triaxle SN. 019633, 400 8LL, Mack Rears on  
Hendrickson, 24 5, 19 5' Thel w/ heated body,  
Lt Wt 25,700 558K, Needs drive tires and brakes,  
Engine very dry Nice cond for year! No history



**\$38,500**  
1998 W900 Kenworth 500 Cat SN 2TS12178 w/ hyd retarder  
RTL016915 DS461 433 Au Su p 10 Alum Whls 22 5 75%  
Virgin 170 wb Sliding Holland VIT Interior 225K

**Jerry Hoover**  
6651 Baertown Rd. Dover, Oh 44621 330-878-6630 M-F 8-5

**We make trucks work in the field with ALLIANCE flotation tires**

**High-Traction Flotation**

**High-Flotation**

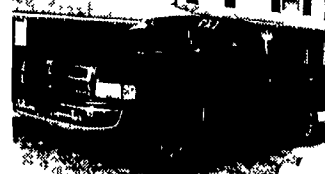
#328

**CUSTOM HEAVY DUTY WHEELS & TIRES FOR SPOKE OR BUDD HUBS. WE CAN MAKE WHAT YOU WANT!**

**Diller Equipment 800-640-4448**  
Somerset & Chambersburg, PA **814-629-9893**  
**Stop Spinning Your Wheels, Call Us Today!**



93 FORD F350 MECHANICS BODY,  
Diesel, Auto, AC, High Miles, Nice  
**\$6,990**



99 DODGE RAM LARAMIE SLT 4x4  
5.2 V-8, Auto, AC, 37,000 Miles  
**\$15,900**



99 DODGE QUAD CAB,  
4x2, Laramie SLT, 31,000 Miles  
**\$14,900**

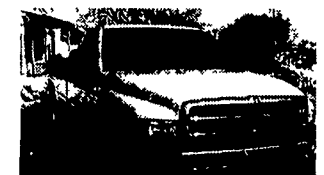


1990 DODGE RAM 150  
5.2 V-8, Auto, 92,000 Miles, Local 1  
Owner, Garage Kept Trade  
**\$3,990**



00 FORD F250 EXT CAB 4x4,  
Long Bed Powerstroke Diesel,  
37,000 Miles  
**\$26,900**

**WILLIAM H. WESSELS  
USED CARS**  
811 Route 15 Dillsburg, PA  
**1-800-440-4433 1-717-432-2918**  
Notary Public - Temporary Tags



01 DODGE RAM 1500  
3.9 V-6, Auto, AC, 39,040 Miles  
**\$11,900**



99 DODGE RAM 1500 CLUB CAB,  
4x4, V-8, Auto, AC, Only 15,358 Miles  
**\$20,900**



1999 FORD E250 EXT. CARGO  
V-8, Auto, AC, 43,365 Miles  
**\$13,900**



1994 FORD F150 EX CAB 4x4  
302 V-8, Auto, AC, XLT, 105,000 Miles,  
Local Trade  
**\$8,990**



1999 DODGE DAKOTA CLUB CAB 4X4  
V-8, Auto, AC, 45,310 Miles  
**\$15,900**



00 DODGE RAM 2500 CARGO VAN,  
5.2L V-8, Auto., AC, 69,000 Miles  
**\$9,900**



96 CHEVY K1500 4x4  
V-6, 5 Speed, AC, 50,720 Miles  
**\$8,990**



2000 CHEVY ASTRO  
AWD Cargo Van, V-8, Auto, AC,  
56,310 Miles  
**\$10,900**



2000 GMC 3500 EXT. CARGO VAN  
Turbo Diesel, Auto, AC, 75,214 Miles  
**\$14,900**



96 FORD F250  
4x2, XL, 4.9L 6 Cyl., Auto, AC,  
62,000 Miles  
**\$8,990**



2000 DODGE DAKOTA, PICKUP  
WITH UTILITY CAP, 3.9 V-6, Auto,  
AC/Factory Warranty, 19,000 Miles  
**\$8,990**



97 DODGE RAM 1500  
Ex. Cab, 4x4, Long Bed, SLT Pkg.,  
360 V-8, Auto., AC, 116,411 Miles  
**\$9,900**



2000 CHEVY K1500 4x4  
Silverado, 4.8 V-8, Auto, AC, Only  
26,000 Miles  
**\$15,900**



95 FORD F150 4x4, 4.9L  
6 Cyl, 5-Speed, AC, 84,200 Miles  
**\$7,900**



1997 FORD F350 UTILITY TRUCK,  
4x4, 460 V-8, Auto, AC,  
91,000 Miles  
**\$14,900**



01 DODGE B1500 Ext. Cargo Van  
V-6, Auto., AC, 35,000 Miles  
**\$14,900**



00 CHEVY C1500 W/T  
V-6, Auto, AC, 84,056 Miles  
**\$7,990**