

1A CONSTRUCTION EQUIPMENT

1150-C Case crawler/ldr, eng just overhauled, new paint, real good U/C, ready for work, \$15,000. 717-927-8752.

1983 Int triaxle, \$8,000. 814-259-3867.

Yale forklift, gas eng, \$1,200. 609-333-1918.

7' power angle snow blade, mounts on Universal skid loader, \$900. 717-898-7195.

Erskine 2418 snow blower mounts on Universal skid loader, needs hyd 21-42 gal/min, like new, \$4,400. 717-898-7195.

'98 Cat D3CXL Hystat, 6 Way Blade, 1450 hrs. Looks and runs like new, \$36,500



717-442-9671

BUYING & SELLING USED CONSTRUCTION EQUIPMENT, NEW & USED PARTS & ATTACHMENTS CALL

H.E.L.P., INC. (717) 469-0039 FAX (717) 469-7679

Specializing In Caterpillar Parts also available for Case, Fiat, IHC, Komatsu, Deere, Etc.

ALL PARTS AT DISCOUNT PRICES! **PARTS LOCATING SERVICES**

Call Us For Your Parts & Service Manual Needs

HEAVY EQUIPMENT LOADER PARTS, INC.

10070 Allentown Blvd., Grantville, PA 17028

Lancaster Farming
Check out our Website

www.lancasterfarming.com



Cat 941/951 CRL Loader 8 Crawler Loaders To Choose From SALE OR RENT

Heavy Equipment Loader Parts, Inc.

10070 Allentown Blvd., Grantville, PA 17028

No Sunday Calls (717) 469-0039

YANMAR ENGINES

Used in John Deere Equipment Komatsu Wheel Loaders Taguchi Excavators Bomag Rollers JLG Aerial Lifts

And many other types of equipment. We offer replacement engines, parts and service. Also rebuilding other engines, generator sets and water pumps.

Southern End Mechanical Service

2443 Beaver Valley Pike New Providence, PA 17560

(717) 786-6855

USED & NEW PARTS PRICED RIGHT

Dismantling Over 650 Machines For Parts

Cat	IHC	Gallon
Case	Michigan	Wabco
John Deere	Hough	Dynahoa
Trojan	Terex	Koehring
Drott	Hein Werner & Others	AC/Fiat Allis

REPAIRS & REBUILDING AT OUR LOCATION. Reliable Service & Exp. Personnel. Call Jim Shelly.

NATIONWIDE PARTS LOCATING SERVICE

In addition to our own large inventory, we have two computerized parts locator services, nationwide & Canada, ready to serve you. In less than a minute, over 600 used & new parts & equipment suppliers will receive your parts request. Parts are located easily & at substantial savings. Try Our Services. Parts Shipped Anywhere Direct To You.

All Parts Guaranteed. "We Return All Phone Calls"

BALANDA EQUIPMENT, INC.

P.O. Box 407 • Route 29 • Palm, PA 18070

Phone 215-679-3900 • Fax 215-679-8727

TOLL FREE: 1-800-322-8030

Sam's MECHANICAL SERVICES

Fork Lifts Sales - New & Reconditioned Rental Leasing



Specializing In Fork Lifts Skid Loaders Repairs

• Used fork lift mast for back of tractors
• Heavy duty forl extensions

Don't throw out or trade that old engine! Have it overhauled for a fraction of the cost of new! All work is guaranteed.

~ Skid Loaders & Fork Lift Rentals ~

5917 Plank Road, Narvon, PA 17555

Call for Sales & On-Site Service

717-442-9334

Winter Specials, Stop in and Choose One Today See Binkley & Hurst Bros.

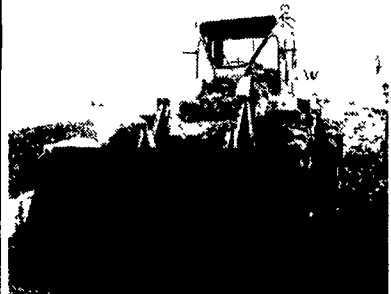
For Quality Machines and Good Financing Plans

Case 580 K Cab 4 Wheel Drive Bucket Extenshoe Extra Reach



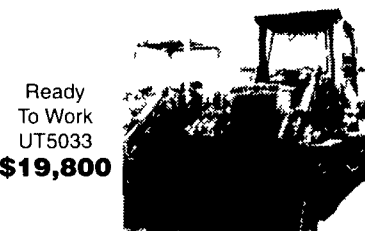
with Wobble Stick 2 Lever Controls Large 30" Trenching Bucket (UT4979)

Cat 966 B Articulated Wheel Loader with Cab & Heater



4 Sp Power Shift, Rated 150 HP, 17 Ton Weight Class, Service Ready to Work UT5008 **\$17,800**

Cat 955 L Crawler Loader with Cab



Ready To Work UT5033 **\$19,800**

Good Condition John Deere 655 Crawler Loader



with cab & heater, 18 ton weight class, J D turbo charged 110 hp diesel, hydrostatic drive, nice & solid, good u c, good loader, pins & solid bucket, new clutch seals, oil cooler & radiator replaced UT4994 **Fully Serviced Ready To Work A Good Strong Machine \$26,800 OBO**

JCB 506C

1999 Model 6000 lb., 34 lift height only 1700 hrs



Good Quality Priced Right!

Lull 4 Wheel Extensboom Forklift



8000 lb lift with outriggers, 34 foot lift height rotating pallet carriage UT5046 **\$24,800**

Cat D4 H 6 Way Dozer



Very good condition, engine rebuild approx 1200 hrs ago, good u c 11 ton weight class, rated 95 hp **Quality at a Super Price CALL!**

Ask About Financing Tailored to Your Needs!

BINKLEY & HURST BROS. INC.

133 Rothsville Station Rd P.O. Box 0395 Litz PA 17543-0395 (717) 626-4705 Located 1/2 Mile North of Rothsville

1-800-414-4705 Fax 717-626-0996

Visit our Web Site at <http://www.caseih.com> Case IH and Case credit are registered trademarks of Case Corporation



"YOUR AUCTION ALTERNATIVE"



"PUTTING RELIABLE ASSETS BACK TO WORK" WWW.HEAVYEQUIPMENTGUIDE.COM

AERIAL LIFTS WHOLESALE DIRECT

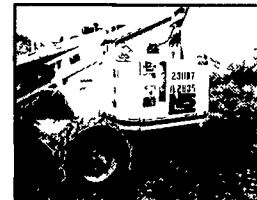
Over 600 Pieces in Stock



1996 JLG 40H 2WD DSL, 6' Platform **\$9,250**



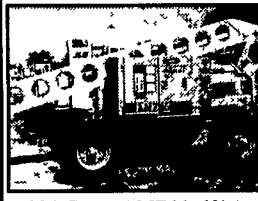
1997 JLG 34HA, 34' Articulating Boom, 2WD, 5' Platform, 1,000 Hrs **\$6,750**



1996 JLG 40HA, 40' Articulating Boom, 4WD, DSL, 6' Platform, 2,427 Hrs **\$10,500**



1994 Genie S40, 40' Straight Boom, 2WD, DF, 3,000 Hrs Reconditioned **\$11,500**



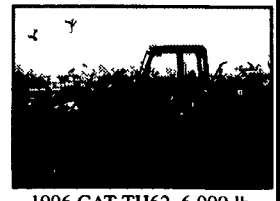
1996 Grove AMZ66, 60' Art Boom, 2WD, DF, 1,400 Hrs **\$12,750**



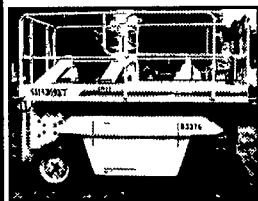
1989 Snorkel TBA60 4WD, DSL **\$9,500**



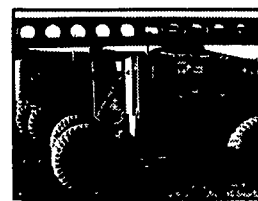
1998 Grove SM3146E 25' Electric Scissor Lift, NM Tires **\$3,500**



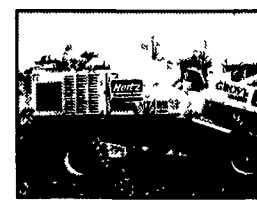
1996 CAT TH62, 6,000 lb Telescopic Handler, 2,367 Hrs, Bucket **\$25,000**



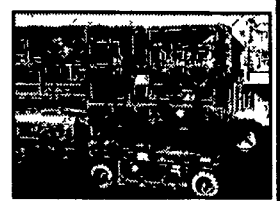
1998 Grove SM3269XT, 25' RT Scissor, 4WD, DF, Several Avail **\$6,500**



1995 AMZ68XT, 62' Articulating Boom, 4WD, DSL, Jib, 3,500 Hrs **\$13,500**



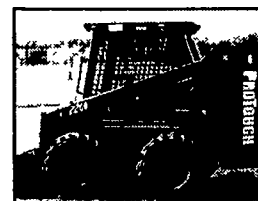
1996 Grove MZ48B, 42' Boomlift, 4WD, Nissan DF, 6' Platform, 1,740 Hrs **\$11,500**



MEC 1632, 16' Electric Scissors, Nice Units **\$1,900**



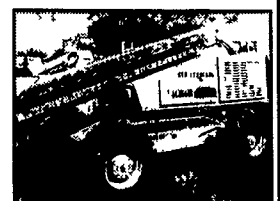
New 2002 Thomas 1300 Skid Steer, 40HP Kubota DSL AUX **\$13,500**



New 2002 Thomas 2200 Skid Steer, 87HP Kubota DSL AUX **\$18,000**



1988 CAT 436 Backhoe, 2WD, Extend-a-Hoe, Needs Bushings **\$12,500**



1997 Grove MZ66B, 60' Straight Boom, 2WD, DSL, 1,600 Hrs **\$13,850**

ADI

11915 Lurgan Rd., Orrstown, PA 17244

717-532-4313 or 1-866-530-5438

(10 miles North of Chambersburg on Rt. 997)