

We're Hog Wild About
Our
PORK
PRODUCERS

1A CONSTRUCTION EQUIPMENT

**used forklift sales,
service & rentals**



1996 CAT GCG25, 5000lb,
1996 GC18 3500lb, tpg, 82"-189" lift,
Tread Tires, S/S, 3 stage mast, Good
Condition, Your Choice, \$6,799

superior lift

used forklift sales, repairs and rentals

187 east church street
stevens, pennsylvania 17578
phone **717.336.1698**



Caterpillar 416 4x4 Backhoe **\$17,000**
Heavy Equipment Loader Parts
Rt 22 Grantville, PA
(717) 469-0039 help10070.com

Diesel Engine Service

13 Pleasant Valley Road • Ephrata, PA 17522
PHONE: 717-733-3890 • FAX: 717-738-3146

JOHN DEERE & DETROIT DIESEL



• Engines • Power Units •
Generator Sets • Complete
Rebuilding • Parts & Service
• Rockford & Twin Disc
Clutches & Parts •

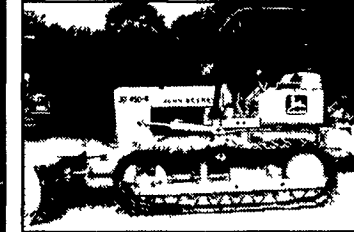
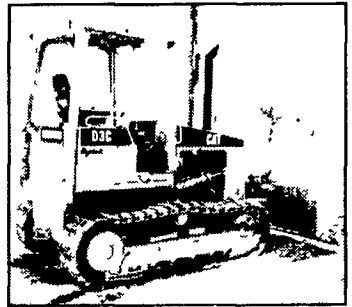
**New JD Powertech
Engines 20-500 HP**

- 80 HP 4045D JDPower Unit NEW **\$7,750**
- 115 HP 4045T JD Power Unit NEW **\$9,200**
- 75 HP 4219D JD Power Unit w/Hood **\$5,500**
- 50 KW Gen Set John Deere Diesel **\$8,750**
- 110 KW Gen Set Detroit Diesel **\$11,500**
- 225 KW Gen Set Detroit Diesel **\$12,500**
- 355 KW Gen Set Cummins Diesel **\$16,000**

BUY, SELL, TRADE OR RENT THROUGH THE CLASSIFIED ADS

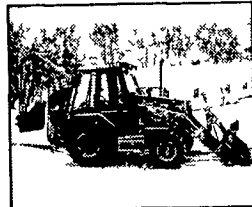
PHONE: 717-626-1164 or 717-394-3047
FAX 717-733-6058
Mon., Tues., Wed., Fri. 8 AM to 5 PM; Thurs. 7 AM to 5 PM

'98 Cat D3CXL
Hystat, 6 Way
Blade, 1450 hrs.
Looks and runs
like new,
\$36,500

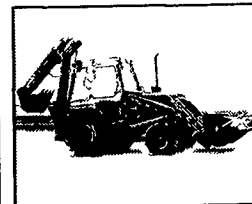


JD 450-B,
6 Way Blade.
Works very well
**Only
\$9,000**

717-442-9671



**1994 Cat 416B 4x4
Cab Ex-hoe Tires @
50%. 7409 Hrs
Very Nice \$21,500**



**1986 Case 580
Super E 4x4 Cab Ex-
hoe, All New Tires, 3
Buckets, 8043 Hrs
Clean \$14,500**

Dull Equipment Co., Inc.

1002 Rte. 501 S., Newmanstown, PA 17073
Sales, Service and Rent • Financing Available
717-949-3451 • 717-629-7463

FOR MORE INVENTORY, PLEASE VISIT OUR NEW
WEBSITE: www.dullequipment.com

**Riverside Exports, Inc.
Worldwide Exporters**

1504a Route 206, Mt Holly NJ 08060
Tel: (609) 265-1818 Fax: (609) 265-9666
Email rse@interstat.net

ENGINES, GENERATORS, POWER UNITS AVAILABLE

- Detroit 16V71 power unit with clutch 600 hp 1956 hrs **\$7,500**
- Detroit 12V71 power unit 1 1/2 to 1 clutch **\$6,500**
- Detroit 12V71 running take out **\$5,000**
- Detroit 671 100kw marine generator set **\$3,000**
- 6x Detroit 671 100kw generator very low hours **\$7,000 ea delivered PA**
- Detroit 453 power unit good running with clutch **\$2,750**
- Detroit 3 71 near new industrial **\$1,750**
- Detroit 353 with 540 auto trans good running **\$2,000**
- John Deere 4239T Ind good running with direct drive
PTO No Rad **\$3,000**
- John Deere 4219 Ind good running air compressor T/out **\$3,000**
- John Deere 6068T1 marine 200 hp bobtail **\$4,000**
- 4x12V71 generator sets 200kw low hours **\$8,500 ea**
- Allis Chalmers gen set 125kw low hours enclosed **\$6,750**
- Detroit 471 75kw with auto start 485 hours **\$6,750**
- 4xDetroit 371 45kw low low hours **\$4,750 ea**
- 1xCummins 260kw gen sets with remote radiators
500 hours **\$10,500**
- 2xCat 379 350kw gen sets x1300 hours 1x3400 hours
remote radiator **\$10,000 ea**
- 2x Mitsubishi 6 cyl 125 hp as removed from excavators,
w/hyd pumps **\$750 ea**
- Continental gas power unit with hyd pump **\$750**
- 3x1 cyl small diesel engs 7 to 10 hp **\$400 \$500 ea**
- Detroit 6V53 with Allison auto runs good **\$1,500**
- Detroit 6V92 silver good running **\$2,000 ea**
- Detroit 671 industrial good running **\$2,500**
- Detroit 8V71 good running **\$1,250 ea**
- Detroit 371 low hours since rebuilt **\$2,000**
- 6 cyl International diesel power unit 125 hp enclosed with pto **\$2,000**
- Cat D330 power 2000 hours with hyd pumps **\$3,250**
- Alco G244 HE cooled only 6400 hours 2400 hp @900 rpm **\$20,000**

TRUCKS, TRAILERS

- Pak Mor 75 yard push out trailer **\$4,500**
- Ford 1983 F600 12 dump needs brake booster **\$2,000**
- 1x Military M35 2 1/2 ton 6x6 11 000 miles **\$4,000**

AIRPORT EQUIPMENT

- 1991 United tow tractor 40 000 lb DBD 300 Ford **\$4,000**
- Drive yourself Hobart 60 kw APU new 371 **\$2,750**
- LD7 dollies 2 @ **\$500 ea**
- Tow tractor Hendrickson 650 000 lb draw bar pull for 747s **\$10,000**

HYDRAULICS

- Charlyn steering motor
- Various hyd motors
- Control valves

CRANES, LIFTS

- Bucyrus Erie 65D recent 30K spent 90 boom **\$70,000**
- Pitman 12 000 lb crane goes out 30 with outrigger **\$3,000**
- 1992 scissor lift MCS goes up 25 **\$2,000**
- Prentice Log loader with or without truck Truck has no title **\$2,000**
- Augers hyd drive good for backhoe **\$1,000 to \$1,500**

ROLLER, SWEEPER, MOWER

- Tow behind sheepfoot roller **\$1,750**
- Pull behind sweeper with water **\$1,750**
- Sweepster broom for skid steer **\$1,250**

FORKLIFTS

- Taylor 22 000 lb dsl **\$8,000 OBO**
- Letourneau 40 000 lb 8 forks **\$10,500**
- Clark 2 000 lb triple lift propane **\$2,000**
- Clark 4 000 lb triple mast propane **\$3,000**
- Hyster 4 000 lb triple mast propane **\$3,000**
- Lull 4x4 for parts 2 available POR
- Breast plate for 345 Fiat Allis loader 4 6 forks **\$450**
- Breast plate for 950 Size loader 7 forks S/S 10 000 lb **\$2,000**
- Many other sets of forks POR

www.riversideexports.com

**BUY,
SELL,
TRADE
OR
RENT
THROUGH
THE
CLASSIFIED
ADS
IN
Lancaster
Farming**

**PHONE:
717-626-1164
OR
717-394-3047**

**FAX:
717-733-6058**

**Mon., Tues.,
Wed., Fri.
8 AM to 5 PM
Thurs.
7 AM to 5 PM**

MZ MIKE ZYNDORF LLC
609/625-8660
609/641-3342 (Evenings)
FAX 609/625-8664
6481 Harding Hwy (Rt. 40) Mays Landing, NJ 08330



(3) Yanmar Model B 50-2 (1) w/Cab.
Rubber tracks, blade **\$17,500**
(2) w/Canopy, Rubber tracks,
blade **\$13,900**
Yanmar B-6 Rubber tracks, Art Boom &
Canopy **\$12,900**
Yanmar B-5 Rubber tracks, Offset Boom
& Canopy **\$12,500**



**98 Cat Model 906, Art Wheel loader,
Cab, Hyd Coupler system, GP
Bucket & Forks \$37,900**



**Case 586 E Straight Mast Forklift 21'
3 stage mast, 6000 lb capacity
4WD \$20,500**
**96 Master Craft, 6000lb capacity, 21' 3
stage mast diesel \$15,000**
**97 American Eagle, 6000lb capacity,
21' 3 stage mast diesel \$15,900**



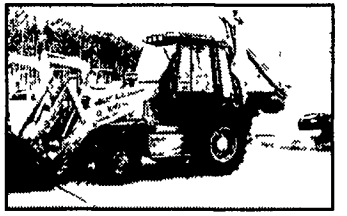
**2000 Digit gas powered, hydrostatic
power shift, low hrs \$11,900**
98 Terramite T5-C, 25hp, gas \$9,900
98 Terramite T-6, 4x4 diesel \$15,250



E120B 20" tracks, cab & AC \$24,900
**99 Nagano - Steel track, backfill blade,
offset boom, aux hyd , cab Like
New 334 Hours, \$25,900**



**1996 - Komatsu PC60-7, Rubber tracks,
cab & blade \$26,900**
**1991 Cat E70B, Rubber tracks, blade
& cab 3200 hrs \$19,900**



**98 Case 580 - Super L Series II, Cab,
4x4, Extend-A-Hoe AC, Ride Control,
JD Controls & Radio \$35,500**



**98 JD 455G Series IV - Crawler Loader GP
Bucket with teeth PS Trans w/TC Low Hours
w/excellent undercarriage \$33,900**



**95 Hitachi Excavator EX-120-3 Cab, 20
steel shoes, AC, 36" bucket with teeth,
aux hyd \$31,500**



**Cat 307SSR - (2) "92" & "94" to choose
from rubber tracks, backfill blade, offset
boom, 1 w/AC and new rubber tracks**



**96 JD 310D Cab, AC, 4x4, extend-a-hoe
excellent cond \$27,900**



**(2) JCB 930 Straight Mast Forklifts 6000 lb capacity
(1) 2 wheel drive (1) 4 wheel drive
.2wh \$16,900, 4wh \$22,900**



**NAP 1993 Hitachi Excavator EX
120 - 2-20' pads, cab, extend a
boom \$27,900**

- Kubota Model B20 Loader Backhoe, Hydrostatic drive Diesel 4x4 3 Hitch **\$13,900**
- 94 Simon Manlift MP60, 60 reach 4x4 diesel **\$14,900**
- '95 Case Model 570 XLT Loader Landscape Tractor w/Gannon grater box 1400 hrs **\$16,500**
- '88 JD Loader Backhoe Model 310C 2wd rogs good condition **\$13,500**
- '89 Komatsu D21A-5 6 way blade low hrs p/s trans **\$12,900**
- '98 Komatsu D21A 6 way blade PS trans canopy lever steer **\$19,900**
- 1995 Cat 307 Excavator cab backfill blade rubber tracks **\$24,900**
- 96 Manitou Rough Terrain Straight Mast 4x4 5000 lb capacity 21' 3 stage mast Ford diesel power **\$16,900**
- (2) 1996 JLG Scissor Lifts Rough Terrain 4x4 dual fuel 33 platform (1) 33 RST \$8,900 25 platform (1) 25 RST \$9,500 **\$15,900 & \$12,500**
- (2) 1999 & 1995 Case Model 360 Trenchers **\$10,900**
- Lift-It Straight mast fork lift 6000 lb capacity **\$10,900**
- Thomas Pro Tough Screen 400 Screen Plant **\$20,500**

**Various
new excavators,
grapples and thumbs
Delivery**



Financing