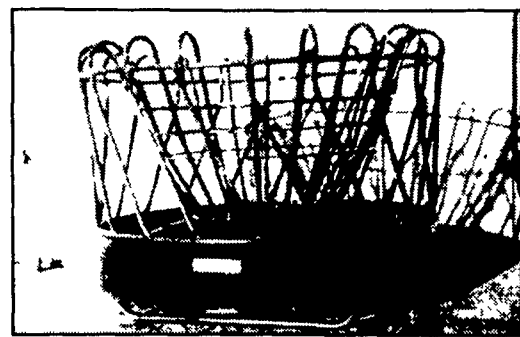


White double frame 6606, 30" planter, dry fert., insecticide, \$2,900.  
717-464-5131

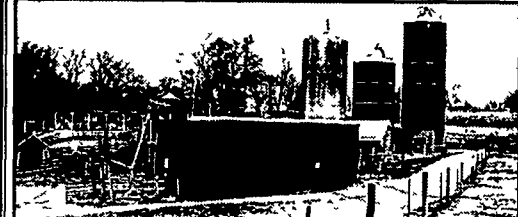
**STOLTZFUS TRACTOR SERVICE**  
Rebuilding engines, transmissions, PTO's, Tune-ups.  
Fuel Injection System Repair  
1715 Beaver Valley Pike,  
Strasburg, PA 17579  
717-786-0256



**J & L Haysaver feeders are built to last.**

Buy a Feeder That Will Save You Money.  
**Stoltzfus long trough feeders**

**MARTIN'S FARM SUPPLY**  
4491 Buchanan Trail West  
Greencastle, Pa 17225  
Phone 717-597-4283 (GATE)  
Fax 717-597-4293  
4 miles West of I 81 on Route 16



**For Sale**  
**Discontinuing Cattle Feeding**

- 42x16 Slurrystore with side mount pump
- 20 hp Electric Flygt Chopper pump
- 20x60 Harvestore silo
- 20x42 Harvestore • Goliath unloader
- Powersweep unloader
- 47 ft double **SOLD** Rissler Conveyor
- 15 ft double chain Rissler Conveyor
- 12 ft single chain Rissler Conveyor
- GSI 5 ton feed bin w/ auger
- 100 ft concrete feed trough
- Mayrath 6 in hyd rollaway auger

Call 410-236-6159 or 410-790-5619

**Thank You**  
for making our  
**Customer Appreciation Days**  
a Success

**Nothing compares to a Super Boom.**

Why choose a New Holland skid-steer?

- Superior visibility
- Unbeatable stability
- Faster speeds
- Greater bucket & lift capacity
- The most attachments
- Unmatched dependability

Stop by today and see the LS170 for yourself and why no other skid steer can compare.



**LS 170 IN STOCK**  
with Cab



**QUALITY USED EQUIPMENT FOR SALE**

- Agco Allis 8785 Lease Return, 1,123 Hrs, 110 HP AWD
- Farmall 504 Tractor
- NH LX885 Skid Loader
- NH L785 Skid Loader
- NH LS170 Skid Loader
- NH LS150 Skid Loader
- HARVESTING EQUIPMENT**
- NH 790 Harvester w/Metalert® 890W Hay Pickup
- NH 900 Harvester
- Gehl 1060 Harvester w/3RN Corn Head & 7' Hay P/U
- NH 824 2RN Corn Head

**HAY EQUIPMENT**

- NH 411 Discbine
- NH 492 Haybine
- NH 499 Haybine
- Case IH 8340 Mower Conditioner
- Hesston 1070 Mower Conditioner
- NH 634 Round Baler
- NH 310 Baler w/70 Thrower
- Hesston 555T Round Baler
- Zimmerman 36' Elevator

**TILLAGE**

- Oliver 546 6-Bottom Plow
- AMCO 12 Ft. Disc Harrow (New)

**BHM FARM & LAWN EQUIP.**

SALES - PARTS - SERVICE  
Route 934 - 2 Miles North of Annville, PA  
Telephone 717-867-2211

**HERNLEY'S**

**FARM EQUIPMENT INC.**

When You Want Service You Can Count On Us!  
2095 S. Market St. Elizabethtown, PA 17022

1-800-564-2511  
717-367-8867



**NEW TRACTORS**



- Agco ST40 w/Loader, 40 HP
- Agco ST30 - Hydro w/60" Mower

**USED TRACTORS**

- AC 6080 2WD, ROPS
- White 2-70 **SOLD**
- AC 6060 AWD w/Loader

**LEASE RETURNS**

- White 6810 2WD, Cab
- White 6810 AWD, Cab
- White 6410 2WD, Cab
- White 6410 AWD, Cab
- Agco Allis 9635 AWD, Cab
- Agco Allis 8775 2WD, Cab

**USED HAY EQUIPMENT**

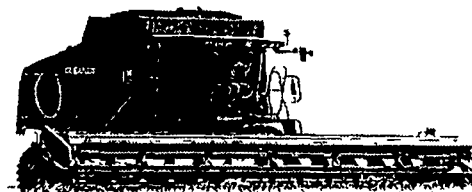
- Hesston 1160 Mower/Conditioner, Nice

**USED PLANTERS**

- IH 800, 4 Row
- (2) Deutz Allis 385 6 Row No-Till Planters

**MISCELLANEOUS USED EQUIPMENT**

- Noble 6 Row Cultivators
- Gator 4x2



See What A Quality GLEANER COMBINE Can Do For YOU In The Field

**NEW COMBINES**

- Gleaner R62 w/Smart Trac & RWA

All Used Combines Waiver of Financing Charges Until March 2004

**USED COMBINES**

- Gleaner R65 w/Smart Trac
- 2001 Gleaner R62 w/Lateral Tilt
- 2001 Gleaner R72 w/Lateral Tilt
- 1995 Gleaner R62 w/Lateral Tilt
- 1993 Gleaner R62 w/Lateral Tilt
- 1991 Gleaner R60 w/RWA & Lateral Tilt, 630 Hugger & 2' Flex
- 1986 Gleaner R6 Combine w/Cummins Eng.
- Gleaner L **SOLD** Rigid Platform
- Gleaner N6 w/Heads
- White 8600 w/2 Heads
- MF 550 w/1143 Corn Head, 13' Grain Head
- 1989 Gleaner R-40

**HERNLEY'S**

**FARM EQUIPMENT INC.**

When You Want Service You Can Count On Us!  
2095 S. Market St. Elizabethtown, PA 17022

1-800-564-2511  
717-367-8867



PARTS

- Supplying You With Parts and Service For:
- Agco White
  - Oliver
  - MM
  - Agco Allis
  - Deutz Allis
  - AC
  - Gleaner
  - White Planters

Emergency After Hours Parts Service Call 717-689-0321

**NEW 2003 USED TRACTOR PRICE GUIDE & FARM EQUIPMENT GUIDE**

**Used Tractor Price Guide**

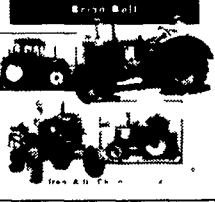


Covers 95 different manufacturers from around the world. Biographies of Companies & photos of tractors. Detailed specifications. Best book written on manufacturers & the tractors they made. 334 color photos. 256 pgs. Quality Hardcover \$39.95 for \$34.95  
● **DISCOUNT SPECIAL!** ABOVE 2 BOOKS REG. \$54.90 FOR \$47.90

**NEW! 2003 EDITION USED TRACTOR PRICE GUIDE**

Approximate retail price new & used high & low. Now covers more than 30 different manufacturers, from 1939 through 2002. Detailed info on engine size, transmission speeds, PTO hp, Drawbar hp, serial nos., to determine year tractor was built. 260 pgs. Softcover \$14.95  
● **FIFTY YEARS OF FARM TRACTORS**  
From Allis Chalmers to Zetor

**FIFTY YEARS OF FARM TRACTORS**



**VIDEO THE TWO THOUSAND MILE HARVEST**

By Dylan Winter. Follow ten of the largest combines as they pursue the cereal harvest of North America. Broadcaster Dylan Winter joins the team for the five month journey from Texas across the US to Alberta Canada. The Payne family & their crew of eighteen show what life on the road is like, & progressing with humour & ingenuity through the unpredictable & evocative Midwestern Landscape. Dylan's unconventional approach interprets this unique annual event as the ultimate harvester's road movie. 60 min. \$34.95



ORDER BY MAIL OR CALL 1-800-481-1353  
FAX 1-800-305-5138 • www.diamondfarm.com

**DIAMOND FARM BOOK PUBLISHERS**

**NEW! HOT LINE FARM EQUIPMENT GUIDE**

● Covers 100 brands of tractors, crawler tractors, combines, corn and bean heads, windrowers, balers, planters, spreaders and skid loaders. **PRICING:** Average auction prices, retail prices, new list prices, option / value pricing for tractors and combines, and loan values. Covers most old and new models from 1912-2002. **SPECS:** Weight, HP, CID, Fuel, no speeds, D-E Draw-bar engine, etc. **SERIAL NUMBERS:** learn the actual model year of equipment and locations. Also list companies selling hard to find parts, plus salvage yards. If you are thinking of buying or selling, evaluating, repairing and identifying farm equipment, this book will save its cost many times over. **LARGE 2-VOLUME SET, 1626 PGS. SOFTCOVER. REG. \$59.95 FOR \$38.95**

**HOT LINE FARM EQUIPMENT GUIDE**

