



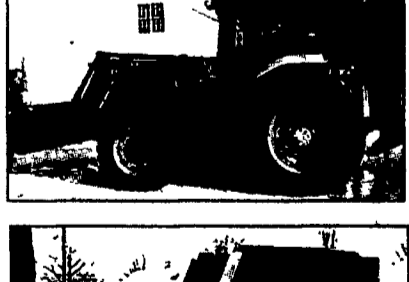
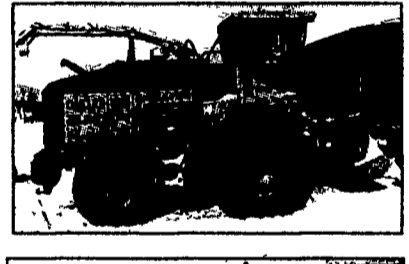
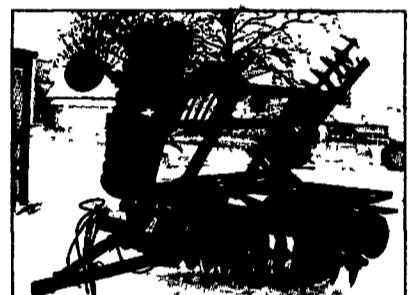
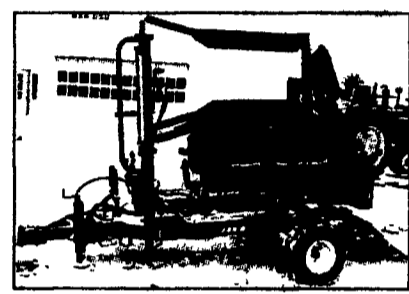
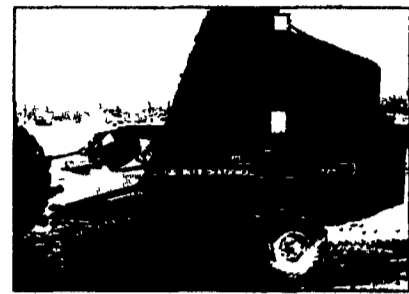
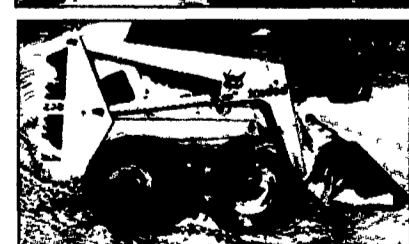
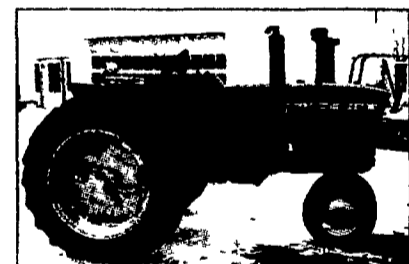
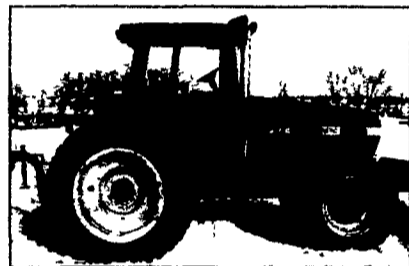
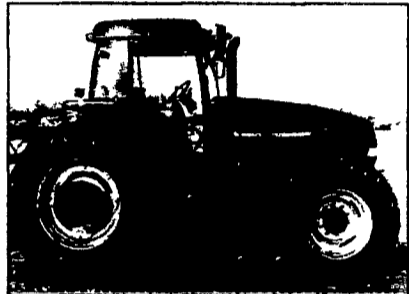
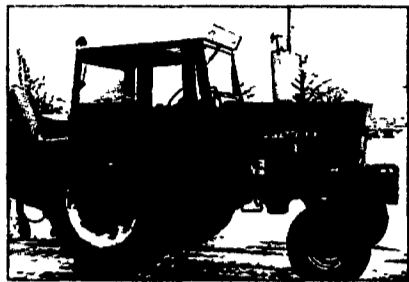
# WOLGEMUTH AUCTION

FEBRUARY 26, 2003 9:00 AM

## \*ABSOLUTE\* AND CONSIGNMENT SALE

LOCATION: 109 N. MAPLE AVENUE, LEOLA, PA 17540  
TRACTORS ~ FARM EQUIP ~ TRUCK LOTS

**\*\*\*ITEMS ALREADY CONSIGNED FOR ABSOLUTE\*\*\***



TRACTORS: 2-135 White w/Cab & Duals; IH 1066 w/Cab New Torque 300 hrs ago; IH 3088 w/Cab; IH 826 Dsl. WF; IH 706 Dsl.; JD 4040 Dsl. w/4-Post Canopy; JD 3010 Dsl.; JD 830 Direct Start; JD 40 w/3pt; Cockshutt 1555 Dsl. WF; MF 699 4x4 Cab; Ford 4600 Dsl. PS; Bobcat 934 Dsl. Skid Loader w/2-buckets; Farmall 240 Fast Hitch w/Cultivator & 2B Plow; Belarus 250 AS; Long 1110 (Parts Tractor); Farmall 140 (Burnt); Farmall Super C WF; **Bobcat 873 w/Cab Skid Loader**; EQUIPMENT: New Case IH 8650 Big Bale Wrapper; MF 822 Round Baler; MF 120 Baler; Three New 8x18 Pequea Hay Kicker Wagons; JD 8200 18x7 Drill w/Grass Seed; IH 620 Drill; Kewanee Soil Saver 6-Tooth Stretch Chisel; 16' Center Fold Sunflower Disc; 21' & 18' Kewanee Rock-Flex Discs; 3pt. IH 7-Tooth High Clearance Chisel; JD 2700 5 B Auto-Reset Plow; Oliver 10' & 12' Trans. Discs; Noble 8-Tooth Hi Clearance Chisel; Bush Hog 14-Tooth Pull Chisel; AC 21' Field Harrow; 18' 4500 Vibra Shank Hyd. Wing Fold Field Harrow; White 549 5 B Auto-Reset Plow; 8 Row S-Tine JD Cultivator Hyd. Fold; Two 4 R & One 6 R S-Tine Cultivators; 12' Brillion Packer w/Pups; Two IH 710 3B Plows; Two IH 510 4B Plows; Brillion 10' 12' & 15' Cultimulchers; New 3pt. Log Splitter; New Rhino Skid Steer Mower; NH 790 Chopper w/824 Cornhead & 799 W Pick-up Head; IH 18' Hyd. Fold Field Cultivator; JD 2B Roll-Over Plow; **Two NH 155 Manure Spreaders (1w/tailgate) Like New**; NI 214 Manure Spreader w/Top Beater & Pan; 34' Elevator w/Corn chute; JD 3940 Harvester 2R Cornhead & Hay Head; NH 258 9' Rake; Case IH 96 Hyd. Driven Hay Rake w/dolly wh.; Two NH 256 Rakes; NH 276 Baler w/chute; Two NH 258 Rakes Rubber Teeth; Dbl. Rake Hitch; Big Kuhn Rake; White 5100 4R Cornplanter No Till Dry Fert.; NH 488 & 479 Haybines; NH 477 Haybine 7'; JD 7000 4R Cornplanter w/Liquid Fert.; MF 4 Row Cornplanter; Kvernland 4B Plow; Case IH 600 Blower; NI 3622 Manure Spreader; Brillion 10' Packer Seeder; 3pt Brillion Seeder; Gehl 100 Hammermill; New IH 7' 3pt Rotary Mower; Pull-Type Sweet Corn Picker; 2-Axle Fert. Spreader; 8' & 12' Omaha Truck Beds; NH 995 Grain Head; Two 7' Snow Blowers; 6' Off-set Disc; 3pt Field Sprayer; NH 36 Flail Chopper; Gehl 920 Forage Wagon; McCurdy Bin w/NH Gear; Oliver Sickle Bar Mower; 3pt Field Harrow; 3pt Tedder Rake; Bagger Hammermill;  
**Three Hit & Miss Engines IH, MH & No Name**; Wisconsin 4cyl. Engine w/Hand Clutch; Also Penn Electric New & Rebuilt Electric Motors & Accessories.

**OTHER CONSIGNMENTS:**

TRACTORS: Case IH MX 150 4x4 w/Cab 1293 hrs.; Case IH 8920 4x4 w/Cab 1300 hrs.; 6125 White 4x4 w/Cab & 690 Agco Loader 1497 hrs.; JD 2355 w/Mower 3100 hrs; JD 3010 D.; JD 955 w/Loader; Case 584C Forklift; NH TC 40 D w/16 LA Loader 4x4 Hydro 100 hrs.; David Brown 880; IH 1586 w/Cabs & Duals; Kubota L 2250 4x4 w/Backhoe & Loader; Scat Track 516 Mini Excavator 115 hrs; JD 510 C & 410 C Backhoes w/Extend a Hoe; Bobcat 7753 Skid Loader; cse 1845 C Skid Loader; Two Unstyled JD A's (Both Restored); JD 4430 Cab Air; JD 2940 3700 hrs. Cab Air; NH 8160 4x4 Cab Air Low hrs; JD 970 Diesel 4x4; Ford 2000; Ford 860; JD 3020; Case 970 w/Cab; Farmall 460 Utility; 8N Ford; JD MT; Oliver 1255 4 wh.dr.; Farmall MTD; NH L455 Skid Loader; **12 Compact Tractors** some 2 wh & 4 wh, Yanmar; Mitsubishi; Shibura; Hinomoto; Iseki TU1601 4 wh dr; Iseki TU200; Yanmar 1700; Mitsubishi D2300; Mitsubishi D2000.

**NH FX 45 HARVESTER w/GROW CORN HEAD & GRASS HEAD. 1500 HRS.**

EQUIPMENT: Gehl 970 SU Wagon 3 Beater Roof; NH 273 Baler w/Thrower; JD 375 Round Baler; NH 565 Baler w/Thrower; NH.320 Baler w/Thrower; NH 316 Baler w/Thrower; Hesston 5500 Round Baler; JD 3950 Harvester; JD 34 Harvester; Vicon 540/B Fert. Spreader; NI 4845 Round Baler w/Net Wrap; Salsco Bale Wrapper; Brillion 7-Tooth Soil Saver; IH 8' Field Harrow; Bin Wagons; NH 352 Hammermill; 489 Haybine; Case Round Baler; NH 273 Baler; IH 5100 Drill w/Grass & Press; White 3 B Roll-Over Plow; IH 145 4B 18" Roll-Over Plow; **Two Original Cub Cadets (1 w/Fenders & 1 w/Duals)**. TRUCKS & TRAILERS: 1948 Chevy Loadmaster Truck 12' Wood Stake Body (11,000 GVW 4-Speed 58K miles, Runs Great); 1985 Ford 150 Pick-Up Standard 2 wh Drive Inspected.

NEW 3 PT. MOWERS, BLADES, STONE RAKES, BUCKETS; POST HOLE DIGGERS, DISC HARROWS SOLD DAILY!  
THIS IS PARTIAL LISTING ~ CONSIGNMENTS COMING IN DAILY!  
LIST SUBJECT TO CHANGE.

**WOLGEMUTH AUCTION (#2357) (717) 656-2947 FAX (717) 656-6011**  
<http://www.wolgemuth-auction.com> [EMAIL-wolgemuth-auct@juno.com](mailto:EMAIL-wolgemuth-auct@juno.com)

Next Lumber Sale: March 5, 2003  
Next Farm Equip Sale: March 26, 2003