

Public Auction Register

Closing Date Monday 5:00 P.M.
of each week's publication

Internet Sale Register will be updated
by Friday at 12 Noon

ATTENTION AUCTIONEERS

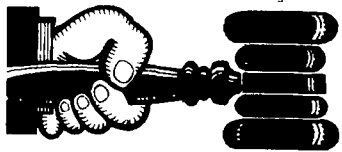
All sales register info needs complete address,
street, town, county & state.

SAT DEC 6 - 9AM Mel's
Stables Horse Sales - Auctioneer,
834 Wallace Rd, New Holland, PA 17557,
Home 717-354-8397, Barn 717-354-6431

Buyer's phone 717-249-0396,
Fax 717-249-5507, Jim DeGaetano - home 717-249-2359

TUES DEC 9 - Christmas
goat, lamb & sheep sale, receiving
begins at 9AM until 5PM, at Carlisle
Livestock Market Inc., 548 Alexander
Spring Rd., Carlisle, PA, Market
phone 717-249-4511

FRI DEC 12 - 1PM State
Graded Feeder Pig Sales Carlisle
Livestock Market, Inc. 548 Alexander
Spring Rd., Carlisle Market phone
717-249-4511, Buyer's phone
717-249-0396, Fax: 717-249-5507,
Jim DeGaetano - Home 717-249-2359



AUCTIONEER'S DIRECTORY

Call 717-626-2191 to list your auction service

Alfred's Auctions Inc.

Alfred J. Finocchiaro-auctioneer
PO Box 861, Hightstown, NJ 08520
Ph: 609-448-SOLD (7653)
Fax: 609-448-0951
alsaucaution@aol.com

www.alfredsaucautions.net



Professional AUCTIONEERING
AUCTION SERVICE
370 Hillcrest Dr.
Ephrata, PA 17522
(717) 733-3511 AU2280-L
Real Estate • Farm Equipment
• Antiques • Household Goods
It doesn't cost to use our Auction Service...It Pays.
CALL TODAY!!

The Classic Edge Auction Company

Real Estate, Appraisals,
Commercial Liquidations, Agricultural,
Antiques, Personal Property
Call today for your free consultation.

1986 Oak Lane, Manheim, PA 17545 717-865-1868
www.ClassicEdgeAuction.com
Ryan L. Groff... LIC#AU-3953L



SANFORD G. LEAMAN, REALTOR/AUCTIONEER

101 White Oak Drive, Lancaster, PA 17601-4842 Lic. #Au-532-L

Phone: (717) 569-4264 - Toll Free: 1-800-836-8113 FAX: (717) 569-8847

Specializing in Farm Real Estate & Equipment

Web: www.lamnauct.com

Email: farmboy@lamnauct.com

Ben Siegrist Apprentice Auct. 717-284-4268 Lic. AA2910



KLINE, KREIDER & GOOD

AUCTIONEERS
www.klinekreidergood.com

COMPLETE PROFESSIONAL AUCTION SERVICE
REAL ESTATE - FARMS & RESIDENTIAL
LIQUIDATIONS - ANTIQUES -
FARM MACHINERY - LIVESTOCK

RANDAL V KLINE
AUCTIONEER-REALTOR
717-733-1006
AU #499

ROY E GOOD, JR
AUCTIONEER
(717) 445-4309
AU #2116

HFA HORNING FARM AGENCY, INC.

REALTORS • AUCTIONEERS • APPRAISERS

Alvin & Elton Horning • Merle Eberly AU-2417-L
C Ivan Stoltzfus 3920-L
Morgantown, PA (610) 286-5183

- >> Courteous Real Estate Services
- >> Professional Auctioneers
- >> State Certified Appraisers
- >> Specializing in Farms and Land

TUES DEC 16 - Christmas
goat, lamb & sheep sale, re-
ceiving begins at 9AM until
5PM, at Carlisle Livestock
Market Inc., 548 Alexander
Spring Rd., Carlisle, PA; Mar-

ket phone 717-249-4511,
Buyer's phone 717-249-0396,
Fax 717-249-5507, Jim De-
Gaetano - home
717-249-2359.

ANOTHER ABSOLUTE AUCTION BY OWNBY

Holstein Dispersal
Milking Herd & Bred Heifers
Virginia Milk Base

Dairy Related Farm Equipment

Hatcher's Dairy, Inc
Powhatan, VA (West of Richmond)

AUCTION - MARCH 7th

Friday - 10:30 a.m.

One of Virginia's Top Herds

for 2X day Milking!

Dairy Herd Sells First!

A Great Young Herd!

145-Cow Milking Herd

Rolling DHI Ave 2x 22,955m 869f 700p

45 Bred Heifers

(Immediately Following Cattle Sale)

VA Milk Base

113,361 lbs. (winter)

Followed by

Equipment of Hatcher's Dairy, Inc.

Mostly Shed Kept & Well-Maintained

3 Tractors, Pickup, Forage Harvester w/heads,

Silage Wagons, Silage Blower, Round Baler,

Rake, Mix Wagon (new), Spreaders, Corn

Planter, HD Offset Disc, Plows and More

Also - Equipment of

Billy Stratton Estate & Others

Tractor, Round Baler, Disc Mower, Rakes,

Forage Harvesters, Wagons, Plows, Spreaders

Plus More Items

Call for Brochure - 804-730-0500

Another Absolute Auction by

804-730-0500



6409 MECHANICSVILLE TNPK MECHANICSVILLE, VA 23111

www.ownbyco.com

PUBLIC AUCTION MARCH 4, 2003 - 9:00 AM

SPRING MILLS, CENTRE COUNTY, PA - 3471
Penn's Valley Road - 3 Miles East of Old Fort on SR 45.
8 Miles West of Millheim Near Valley Equipment

7 MULES

Pair of Bay Molly Mules - Smooth Mouth, Pair
of Bay Jack Mules - Smooth Mouth, Pair of
Sorrel Molly Mules - 5 and 7 years old, Sorrel
Jack Mule - Smooth Mouth

3 Fore carts, Fore cart w/auto turn and
rubber shocks, 2 to 7 horse hitches, 6 sets of
Bio-plastic harness, 2 sets of leather harness

FARM EQUIPMENT

MM G1000 110 HP Tractor w/rubber block
wheels, IH T6 crawler w/log winch and 120'
cable, ELS 800 gal. manure spreader, NI 2A
spreader, White Horse 390 two btm plow, JD
KBA disk, JD grain drill w/small seed box, JD
7000 corn planter w/no-til coulters, crop sprayer
w/28' boom, I&J 2 row cultivator w/nitrogen
tank, MC one row cultivator, I&J mower combi-
nation w/NH rubber rolls w/8' bar and Wisc.
VE4 engine, NI Cutditioner, Kuhn hay rake
w/5.5 Honda, NH 310 baler w/Wisc. VE4 4 cyl
eng., Pequea hay tedder, NI 36' grain and bale
elevator, 6 flat bed wagons, MF M260 harvester
w/long feed table (28" knives), NI 323 1 row
corn picker, Little Giant corn drag, 10' grain
auger w/motor, 2 gravity bins, Heston Harvester
w/ear corn hopper, MC corn binder w/aluminum
self loader w/Kawasaki 2 cyl., 20 HP 540 clutch
reduction, MC 32" 1 horse corn binder, Wisc.
65HP engine Model V465-D w/540 clutch
reduction, Hydraulic unit with 8HP Honda,
hydraulic elevator motor with hoses, Wisc. VG-
4D hand crank engine, 5' PTO shaft, Corn
Binder parts, 310 Baler Parts, NI picker parts,
cultipacker parts, grain cart, silage cart, water
troughs, fence posts, poly wire, 2 hay racks,
Bridgport Milling Machine with 1/2 HP elec-
tric motor, Dewalt air-powered cut-off saw, 12"
sliding compound miter saw, Scalding trough,
US Slicing Machine meat slicer, Savage Model
110 30-06 rifle, Wagon load of misc., and some
household goods.

LUNCH AVAILABLE

Owner - Christ K. Beiler Sr.

Naomi Z. Beiler

3471 Penn's Valley Road, Spring Mills, PA 16875

Auctioneer - John Esh - AU2055L

3326 Jacksonville Rd., Bellefonte, PA 16823

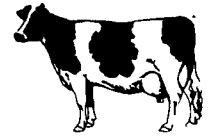
814-625-0178

Owner and Auctioneer are not responsible for accidents.

Terms - Cash or Good Check is due on the day of the sale.

Dairy and Livestock Sales

NEW HOLLAND SALES STABLES, INC.



New Holland, Pa.
Located 12 Miles East of Lancaster, just off Rt. 23

DAIRY SALE - WEDNESDAY, FEB. 26, 2003

10:00 AM BRED HEIFERS, SHORTBREDS &
OPEN HEIFERS
11:45 AM BULLS
12:00 NOON FRESH COWS & SPRINGERS

Dominicooo will be here from Canada, with a good
load of Fresh cows milking up to 90 lbs. - - -
Also 10 good Springers - - -

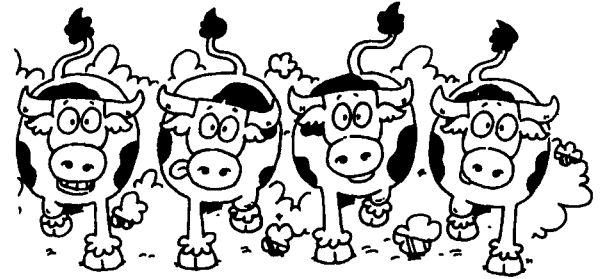
85 Cow Herd from New England sells - - -
50 Holsteins and 35 Aryshires. Herd has been est. for
years - - - over half will be Springers - - -

Several good pedigreed Bulls Sell!!

NOTE TO CONSIGNORS!

Please send all information along with your cattle Tues.
Fresh Date, Breeding Dates, Milk Weights, with your trucker.

Sale Managed By
New Holland Sales Stables, Inc.
Barn 717-354-4341 Fax 355-0706
David Kolb, Mgr. 61L



Public Auction

THURSDAY
MARCH 6, 2003
9:00 A.M.

>>> WELSH VUE FARM <<< HOLSTEIN DAIRY CATTLE BELGIAN HORSES FARM and DAIRY EQUIPMENT PEACOCKS CROPS

LOCATION: 262 Meetinghouse Road, Gap, Lancaster County, Pa From Intercounty -
East 5 8 miles on Route 340 - turn left at White Horse Machine on
Meetinghouse Road and proceed 9 mile to farm lane on left.

75 HEAD REGISTERED HOLSTEIN DAIRY CATTLE

43 milk cows 14 bred heifers
balance dry cows and young heifers
Home raised herd carrying the Buttwood prefix
BAA 104 3 December score 1EX 11VG 14G+ 22 years of breeding

DHIA 22,350 816 fat 660 protein

*Select sire breeding *Callhood vaccinated *No BST *Jan test - 15 milking from 90# to 135#
11 1st lactation 7 2nd lactation many selling with daughters in herd
Sired by Emory (6) Mark Cinder Jolt (4) Leif (2) Winchester (2)
Masco Durham (6) Emerson (4)

Service sires: Forbidden, Hi Metro, Integrity, Jed Approval, Durham, etc.

>> cows with the will to milk - well grown heifers - something for everyone <<
sale in tent - catalogs available auction day - cattle selling appx. 11:30
John Burket - announcements 814-239-8438

REGISTERED BELGIAN HORSES

3 year old gelding
(4) mares - sired by a grandson of Master Eddie - 3 bred to Willowcreek Unbelievable
Yearlings - (1) filly (2) colts sired by Greentop Brett

MASSEY FERGUSON 1105 diesel tractors - 110 HP - on rebar or rubber
ELS 975 gallon liquid spreader; NEW IDEA 323 corn picker; NEW HOLLAND 30'
ELEVATOR; KUHN rake; BRILLION 8' seeder; MC rotary scythe; (2) bin wagons;
(2) flat bed wagons; weeder; hydraulic unit and hoses; VICON fertilizer spread-
er; forecart w/scraper blade and 16' chain elevator & 3x IJ cultivator.

PEACOCKS and PEAHENS

Sputnik, (4) Westfalis milker units; 75# pail; Delvo P tester; Herdex; office desk,
filing cabinet; silage and grain carts; bedding chopper; 20 gallon orchard
sprayer; (3) hay racks; pony cart; torch; tobacco lathe; 20 ton press; hyd. engine
lift, office chair; 12 volt Gandy applicator, barn dri spreader and other unlisted
items.

*EAR CORN *HAY *SILAGE *BALAGE

TERMS: Cash or local checks-no out of state checks unless accompanied
by current bank letter of credit addressed to auction. Good food available
all day. Toilet facilities. Inspection of items and cattle week of auction - no
Sunday visits. Announcements auction day take precedence over any previ-
ous printed or oral information.

AUCTION ORDER: small items - equipment - crops - dairy equipment - horses - dairy cattle
BE PROMPT - NOT MANY SMALL ITEMS

Auction by
AARON & RACHEL STOLTZFOOS
717-768-3416

HARRY H.
BACHMAN
AUCTIONEER
2051 HORSESHOE PIKE
ANNVILLE, PA 17003-8850
(717) 867-1809

Stonehurst Farm
Donald Welk 687-7475
Harold Welk 687-7030