

Shorthorns Shining In Show Ring At Farm Show, Beyond

MICHELLE KUNJAPPU
Lancaster Farming Staff

HARRISBURG (Dauphin Co.) — The Shorthorn show is growing, not only in the market beef arena but also the junior and open shows at the Pennsylvania Farm Show.

At this year's show, "Elmer's Fancy Lady," owned by Nate Tice, seasoned veteran in the ring with 10 years of showing experience, took the grand champion female position.

Nate, a 4-H and FFA member, is the son of Tom and Deb Tice, Lebanon, and is a senior at Northern Lebanon High School.

He is from a 30-acre farm and has 15 head of cattle at home.

Sara Jo Campbell and "PF

American Girl" came home with reserve.

A junior at West Greene High School, she also took home both champion and reserve champion honors in the Maine-Anjou junior breeding show.

Sarah Jo, 17, who plans to study animal genetics in college, has exhibited animals for ten years at the Farm Show. She is the daughter of Jamie and Jacki Campbell, of Campbell Show Calves, Sycamore, Greene County.

The farm includes 270 acres and 30 head of cattle — half Shorthorn and half Maine-Anjou. The family brought five head of cattle to the Farm Show, including a market steer.

Champion and reserve champion bull placings in the open Shorthorn show went to Mid Atlantic Genetic Productions, a group that, with their combined efforts, brought 19 cattle to the Farm Show. Masonic Homes, Elizabethtown, part of the group, bred the champion and purchased the reserve in dam.

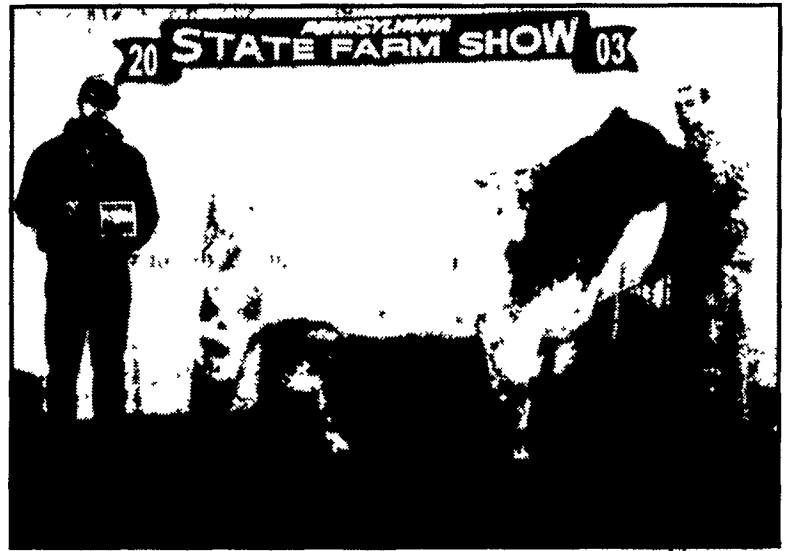
The Masonic Homes operation, comprised of 1,400 acres, has 145 beef cattle — 80 percent of them Shorthorn — and has done extensive embryo transfer work.

Four years ago, said David McElhane, director of the Pennsylvania Shorthorn Association and on the national board of directors for the American Shorthorn Association, there were two entries in the Shorthorn division of the steer show — a number which rose to 15 this year, the biggest breed show not counting the crossbred cattle.

In the breed show, the Shorthorns have gone from no show at all to one of the biggest breed shows at the Farm Show.

Nationwide, of all the breed associations, the Shorthorn breed has the largest increase number of registered cattle as a percentage of the breed by growth, according to McElhane.

In addition, Shorthorns made up the largest national youth show over any other beef breeds at the North American International Livestock Exposition (NAILE), he said. In addition almost 400 head of Shorthorns went through the ring in the open show at NAILE.



Champion and reserve champion bull placings in the open Shorthorn show went to Mid Atlantic Genetic Productions. Frank Stoltzfus, Masonic Homes, is at halter.



Nate Tice, Lebanon, won grand champion with "Elmer's Fancy Lady" at the Farm Show.

Longtime Holstein Breeders Inducted Into Hall Of Fame

(Continued from Page A21)

protein to 24,368 of milk, 830 of fat, and 770 of protein. The herd's breed age average (BAA) also jumped, from 103.8 to 104.5.

The Reidels have three young children, Kelsie, Caleigh, and Dylan.

All-Pennsylvania winners for 2002 were also recognized during the convention.

Fifty-two Holsteins out of a total of 1,400 exhibited at three major shows this year received the distinction.

James and Nina Burdette, Mercersburg, Franklin County, were top exhibitors, showing four All-Pennsylvania winners, three reserve winners, and three honorable mentions in 2002.

James Kahler of Wellsboro, Tioga County, received three All-Pennsylvania awards, one reserve, and on honorable mention.

"Star-Gazing in Bethlehem" was the theme of the three-day conference.

Look for more coverage of the event in upcoming editions of Lancaster Farming.

We Salute Our Farming Industry

2003 Lancaster County Family Dairy Day

PENNSSTATE



College of Agricultural Sciences
Cooperative Extension in Lancaster County

Tuesday, February 18th, 2003

Lancaster Farm and Home Center

NOTICE
SNOW DATE
RESCHEDULED
MONDAY, MARCH 10

9:00 A.M. - 3:00 P.M. @ LANCASTER FARM & HOME CENTER



"Strategies For Success"

Family Farms-
Don't Miss It!

Walk-ins are welcome, but please call the Lancaster Extension Office at (717) 394-6851

New this year, the Penn State Family Living program will offer pressure canner gauge testing at no charge to attendees, and an optional afternoon program for spouses on "What's New in Home Canning" and "Who Gets Grandma's Yellow Pie Plate? Considerations for the Transfer of Personal Property", by the Lancaster County Cooperative Extension Family Living staff.