



2003 PFGC New Member Application Form

Name _____

Address _____

County _____

Phone (____) _____

Occupation (check one)

Farmer

Industry

Scientist/Educator

2003

Membership Classification (check one)

Individual or Youth-Group (\$35)

Individual - 5 years (\$150)

Scientific/Professional Society (\$35)

Supporting Organization (Industry) (\$100 or more)

Make check payable to Pennsylvania Forage and Grassland Council.
Detach this application and mail along with your check to Richard Hann,
Executive Director, PFGC, P.O. Box 355, Hershey, PA 17033.

Heartland Next Stop For Alfalfa Intensive Training Seminar

KANSAS CITY, Mo. — The Alfalfa Intensive Training Seminar (AITS), developed by the Alfalfa Council, is unique within the agriculture industry and provides participants the knowledge needed to make educated and insightful recommendations to alfalfa producers.

The next semiannual AITS will be conducted in Kansas City, Mo., March 18-20, for the first time since the AITS program was founded 10 years ago.

The three-day conference will cover topics such as genetics, variety development, soils, fertility, forage quality, marketing, economics and a host of other alfalfa-related subjects.

Certified crop advisers can earn up to 10.5 C.E.U. credits. Registration information, as well as a complete course curriculum, can be obtained by contacting the Alfalfa Council at (816) 584-8169 or visiting the Website at www.alfalfa.org. A brochure is available for downloading at the Website.

Jersey/Holstein Crossbreeds Turn Grass Into Milk On Berks County Farm

(Continued from Page E7)

eties of this beetle, creatures that fill a peculiar niche by making manure their primary source of food.

One of the important functions of dung beetles is that they distribute manure nutrients in the pastures, helping to maintain soil fertility. A good beetle population can help dry out a dung pile in the pasture in three or four days, Washburn said. The beetles then

travel to other piles, spreading the nutrients as they migrate and burrow.

Using few or no chemicals for worming the cattle helps maintain a thriving beetle population, according to Washburn.

"Dewormer sets them back," he said.

"It's a whole different philosophy with a grazing system, as far as the biology."

We Salute Our Farming Industry

0% For 24 Months 20% Down, Min. of \$2500 Financed

Harvesters



JD 3970 PT Harvester,
#10495, W \$6,500

JD 3970 PT Harvester, #18021, O \$12,000
JD 3970 PT Harvester, #12393, W \$17,900
Gehl 1260 PT Harvester, #CL11895, C \$9,000
NH 792 PT Harvester, #14256, W \$8,500



JD 666 6 Row Head,
#16469, W \$12,000

Location Key:

C = Clayton

O = Oxford

W = Whiteford

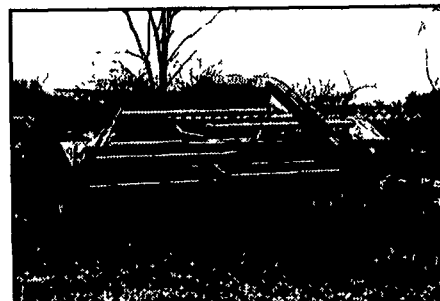
Heads



JD 926 MoCo,
#16452, C \$15,500

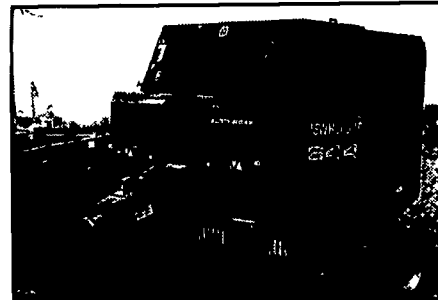
MoCo's

JD 925 MoCo, #16491, C \$14,500
JD 935 MoCo, #16509, C \$15,500
JD 946 MoCo, #19205, W \$19,500
JD 1460 MoCo, #10274, W \$5,995
JD 1470 MoCo, #9928, O \$2,700
NH 1475 MoCo, #12667, O \$9,950
NH 452 MoCo, #17336, W \$4,100
NH 489 Haybine, #18536, O \$2,500
Kuhn GMD700 Disc Mower, #2995, O \$7,940
Kuhn FC300 MoCo, #14003, W \$4,800



NH 499 Haybine,
#CL14603, C \$2,995

Balers



NH 644 Round Baler,
#12993, O \$9,200

JD 466 Round Baler, #16510, C \$16,700
NH 630 Round Baler, #18073, O \$7,500
NH 276 Square Baler, #15386, C \$1,600
JD 346 Square Baler, #17673, W \$4,500

Tedders



Kuhn GF5001 Tedder,
#18471, O \$4,250

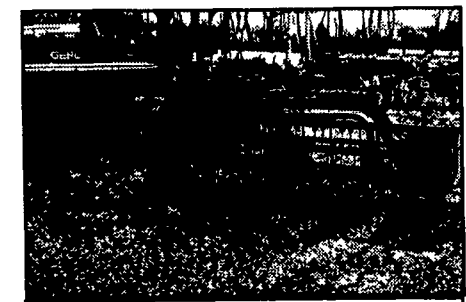
Neimeyer, 6 Star Tedder, #17045, W \$3,500
Kuhn GF22NT Tedder, #17802, W \$1,400

Rakes



Demo GA6000 Kuhn Rake,
#8621, C \$13,560

Demo GA3200GT Kuhn Rake, #5457, O \$4,640
Demo GA4121 Kuhn Rake, #17125, O \$6,400
Kuhn GA3200GT Rake, #17923, W \$2,500
Kuhn GA4100 Rake, #16340, C \$4,500
NH 258 Rake, #20064, W \$1,500
New Idea 4264 Rake, #17408, W \$3,300
JD 672 Rake, #17579, O \$1,800
IH 96H Rake, #15557, C \$695

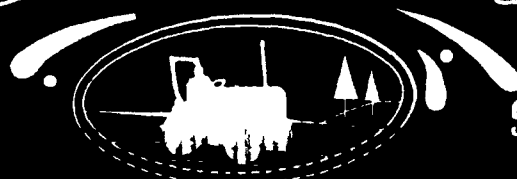


IH 970 Rake,
#CL14708, C \$850

Deer Creek Equipment



JOHN DEERE



Strength You Can Count On

CLAYTON, DE
1-800-367-2726
OXFORD, PA
1-800-255-6567
WHITEFORD, MD
1-800-551-6567
www.deequip.com