

7511 Allentown Blvd.  
Harrisburg, PA 17112

**AFFORDABLE  
CARS AND TRUCKS, INC.**

717-652-1925  
FAX 717-652-4888  
www.autotrader.com/view/  
affordable car and truck

**75 TRUCKS  
IN STOCK**

**"You Gotta Believe!!"**

New Exit #72A, Rt. 81 N; Rt. 22 East of Harrisburg; 3 Miles North of Hershey Park

**99 FORD F250 XLT 4X4 SUPER DUTY**

Crew Cab, 7.3 Powerstroke Dsl, 6 Spd, White 8 Bed, Alloys & Every Possible Option Including Tow Package 1-Mint Cond Owner 140K all 100% Serviced You Won't Believe Your eyes!



**\$20,995**

**96 FORD F250 XLT 4x4**

HD Ext Cab Longbed, 7.3 Powerstroke with 5-Speed, AC, PW, PDL, Cruise & Tilt Only 88K Very Rare Truck in Prime Condition, Farmers & Pullers This is What You've Been Waiting For!

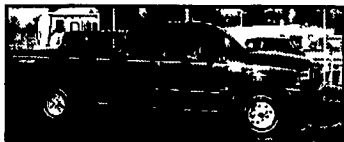


**\$17,995**



**95 FORD F250 XLT 4x4 EXT LONGBED,**  
7.3 Powerstroke DSL, 5-Spd AC, PW, PD, Cruise, & Tilt Leer Matched Cap Only 114K Looks and drives like new!

**\$12,995**



**99 FORD F350 XLT QUAD CAB 4X4**

Longbed 9900 GVW 7.3 Powerstroke, Rare 6 speed, AC, PW, PDL, Tilt, Cruise, & More Mint Cond Must See! 100,000 Mi

**\$19,995**



**85 CHEVY 1500 SILVERADO V8,**

4 Speed, 2 WD No Rust at all and a really good running and solid old Chevy Truck Come and see, Guaranteed to please 115K

**\$2500**



**96 FORD F250 XLT 4X4 EXT. CAB**

7.3 Powerstroke, DSL, Longbed, AT, AC, PW, PDL, Tilt, Cruise, Black/Silver Only 60,000 Mi New Condition

**\$18,995**



**01 DODGE RAM 3500 4x4 SLT LARAMIE**

Quad Cab Longbed Dually, 15,000 GVW, Cummins, High Output Diesel Motor, 6 Speed, All Black, AC, PW, PDL, & All Options, 6 New Radials, Like New, 112K

**\$24,995**



**98 FORD F350 SUPREME**

18' Box Truck 11,500 GVW's, Rollup Door, Plank, New Tires, Brakes, & Insp., AT, AC, Stereo, 5.4 Triton, 100,000 Mi., Superb, Sharp. We used truck all year!

**\$8,999**



**96 DODGE RAM 1500 LARAMIE SLT 4x4,**

V8, Gas, Ext Shortbox, AT, AC, PW, PDL, Tilt, Cruise, Real sharp Truck 100,000 Mi

**\$8,495**



**88 CHEVY SILVERADO 4x4 1500,**

350 V8, AT, AC, All Power, over 100,000 Mi (Spedo Replaced) Perfect Body, No rust all Black New Insp Real nice truck

**\$3,995**



**96 FORD F350 XLT 4X4 CREW CAB**

Longbed, 7.3 Powerstroke Dsl, 5-Speed, AC, PW, PDL, Tilt, Cruise, Only 112K, Leer Cap, Looks & Drives Like New!

**\$19,995**



**97 FORD 150 XLT 4X4**

V8, AT, AC, PW, PDL, Tilt, Cruise, Alloys, This Is A Super Clean Truck, Mint Condition; 1-Owner, Highway Driven Truck, You Won't Believe Your Eyes! 140 K

**\$8,495**



**96 FORD F250 XLT 4x4 H.D.**

8600 GVW, 460 V8, AT, AC, PW, Pdl, Cruise, Tilt, All Black & Sharp, Like New Cond! 100,000 mi

**\$9,995.**



**FOR SALE: 2 LADDER RACKS FOR 8' PICKUPS -**

Both in excellent shape - Price these heavy duty racks new, then come by and Pickup \$150 each 6' alum. cap - \$50.00



**95 DODGE RAM 2500 SLT 4X4 LARAMIE**

Cummins, DSL, 5-Sp, AC, PW, PDL, Cruise, Tilt, Only 112K, Like A New Truck!

**\$14,995**



**96 DODGE RAM 2500 SLT 4X4 LARAMIE**

Cummins, DSL, AT, AC, PW, PDL, Cruise, Tilt, All Black, Only 80K, A Real Cream Puff Gentlemen!

**\$14,995**



**97 DODGE RAM 2500 4x4 LARAMIE SLT EXT. LONGBED,**

Cummins Turbo Diesel, AT, AC, PW, PDL, Cruise & Tilt, 106K, Really clean and well cared for in every way!

**\$14,500**



**95 FORD F250 XLT 4x4**

Longbed, 5.8 V8 351, 5 Sp, 8800 GVW, Only 90K, AC, PW, PDL, Cruise + Tilt, Showroom Looking Condition

**\$11,500**



**97 FORD F250 XLT 4x4 EXT CAB LONGBED,**

7.3 Powerstroke Dsl, AT, AC, PW, PDL, Cruise & Tilt Has 190K, but not only looks like 70K Priced like it too! Well maintained Showroom Condition

**\$11,995**



**95 FORD F250 XLT 4x4**

8600 GVW, 5.8 V8, GAS 351, AT, AC, PW, PDL, Cruise & Tilt, Like New In Every Way! 98K

**\$8,495**



**92 CHEV. 1500 SILVERADO**

4x4 Ext Cab, Shortbox, 350 V8, AT, AC, PW, Pdl, Cruise & Tilt Beautiful 1-Owner Truck, 100,000 Mi

**\$7,995**



**96 FORD F250 XL 4x4 EXT. CAB**

Longbed, 7.3 Powerstroke DSL, 5-Spd, AC, Cloth Interior, Real Clean Truck & Very Well Kept Mechanically All Highway Miles, 202K,

**\$10,995**



**99 DODGE RAM 3500 4x4 LARAMIE SLT QUAD CAB,**

Longbed, Cummins Turbo Dsl 5-Spd, AC, PW, PDL, Cruise, Tilt, P Seat, Stereo and more 140k All black and showroom condition Well cared for PA 1-owner

**\$20,995**



**2000 Ford F-550 Crew Cab**  
2WD w/8' Flatdeck w/fifth wheel plate; Lariat Package Loaded w/Leather; 7.3 Liter Diesel; 6 Sp. Trans.; Excellent Condition;

**\$22,900**



**1993 to 1997 Mack Tri-Axle Dump Trucks**

**Curry Supply Co. Curryville, PA**  
1-800-345-2829 814-793-2829

**Woodcrest Motors**  
SPECIALIZING IN TRUCKS & VANS

1200 North Reading Rd., (Rt. 272) Stevens, (Lancaster Co.) PA 17578

717-336-3130



**99 TOYOTA TACOMA 4x4**  
4 Cyl, 5-Spd, A/C, Maroon, 81,000 Miles



**00 CHEV**  
Ext Cab, 4x4, 4-Door, LS, 8 Ft. Bed, V8, AT, A/C, Most Options, 48,000 Miles, Silver

**\$19,995**



**96 CHEV 1500 EXTENDED CAB**  
Silverado, 4x4, 3-Dr, 5.7 V8, AT, A/C, Most Options, 96,000 Miles, Maroon

**\$10,995**



**SPECIAL 99 CHEV 1500 SILVERADO**

4x4, V8, AT, A/C, Most Options, Dk Blue, 85,000 Miles

**\$12,999**



**99 GMC 2500 SIERRA SLE**  
Ext Cab, 3-Door, 4x4, V8, AT, A/C, Most Options, 8 Ft Bed, 82,000 Miles, Dk Blue

**\$15,995**

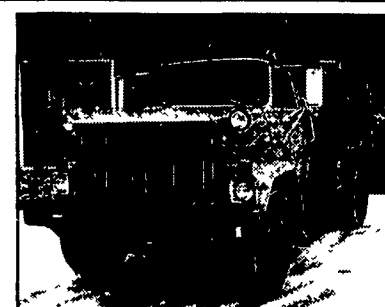


**98 GMC 1500 SIERRA SL**  
V8, AT, A/C, 2 WD, 44,000 Miles, White

**\$9,900**

**AL HAMILTON USED TRUCK SALES**

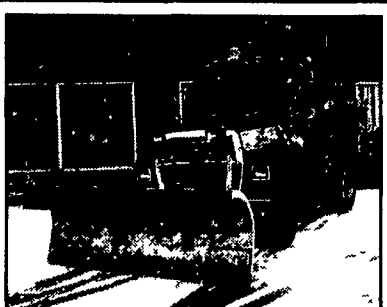
PO Box 157, 55 Doe Run Road, Manheim, PA 17545  
Phone 717-665-7145 Fax 717-665-2137



**1983 GMC BRIGADIER**

10' Dump w/Central Hyd, 3208 Cat 210 HP, Auto Trans, Air Brakes, GVW 35,000, 57,000 Miles, Excellent Cond, No Rust

**\$13,500**



**1987 FORD LN8000**

10' Dump w/Pintle Hook, 7.8L Ford Diesel, 5 Spd Trans, 2 Spd Rear, Air Brakes, Custom Int, 10' Electric Power Angle Plow, Will Separate

**\$18,500**



**1995 FORD LN7000, 26' Van Body w/Lift Gate** 5.9 Cummins 190 HP, 6 Spd Trans, Air Brakes, Non CDL, GVW 26,000

**\$15,500**



**1985 FORD LT8000, 20' Flat Bed Dump** 3208T Rem 225 HP 13 Spd Trans, Air Brakes P/S GVW 54,000 Excellent Condition

**\$17,500**



**1988 MACK RD 690S - TRI AXLE** New 17' Dump 6M6 300 HP 12070 7 Spd Trans, Custom Inter, All Heavy Mack Spec, Like New Excellent Condition

**\$35,000**



**'93 FORD Superduty,**

New 14 Dump 7.5L Gas 5 Spd Trans Full Power, A/C, GVW 15,000 28,000 Miles, Exc Cond

**\$19,500**



**USED VAN BODIES**

Call for size & price



**'90 FORD LT9000**

14 Steel Dump, Heavy Specs 3306 CAT 7L Trans GVW 62,000

**\$25,000**



**1990 FORD F-450**

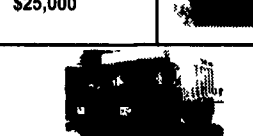
12' Dump 5 Spd GVW 15,000

**\$14,500**



**'86 FORD LN8000, C&C 3208T 215 HP, 5 Spd Trans, 2 Spd Rear, Custom Cab, 222 WB, 156 CA GVW 33,000**

**\$11,500**



**'74 MACK RD885S, 15' ALUM DUMP ENDT,** 675 - 237 HP, 6 Spd Trans, 18 Front Axle, 44 Rear Axle Eng Brake

**\$12,500**



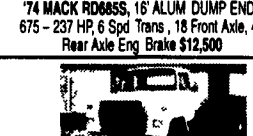
**'83 & '84 INT 2300, New 10' Dump, L-10 Cummins 300 HP, 7 Spd Trans, Air Brakes, A/C, P/S, GVW 35,000**

**\$16,500**



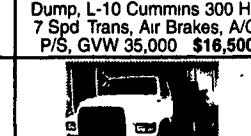
**'96 INT. 4900 DT 466, 6 + 1 Trans, Air Brakes, A/C, 186 CA, GVW 33,000**

**\$19,500**



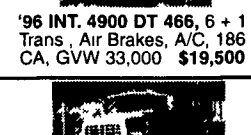
**'97 Ford LN8000, C&C 8.3 Cummins 6 Spd Trans Custom Int, A/C, 180 CA, 246 WB, GVW 35,000**

**\$19,500**



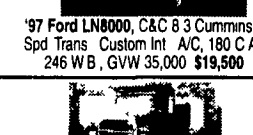
**'97 FORD F-8000** New 10 Dump 5.9 Cummins 190 HP 6 Spd Trans Hyd Brakes Non CDLGVW 26,000

**\$24,500**



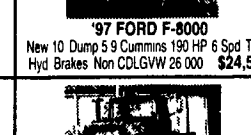
**'70 FORD LN900** 10' Dump, 477 Gas, 5 Spd Trans, 2 Spd Rear, GVW 33,000

**\$6,500**



**'91 FORD LN9000 10' Dump L-10** Cummins 9 Spd Trans Custom Cab Air Brakes Pintle, Hook, GVW 34,700

**\$22,500**



**'69 Mack R - Model, Single Axle TT** 237 Mack, 5 Spd Trans Power Steering Wet Line Excellent Cond

**\$9,500**