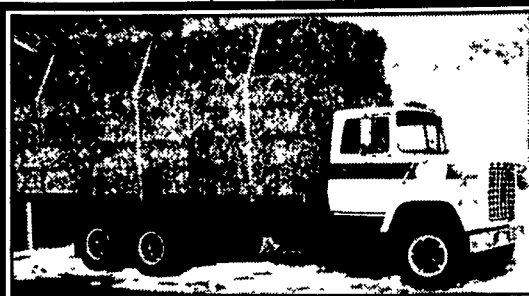




\$16,000
1995 Peterbilt Model 378
 847,000 Miles, 230 Inch Wheelbase, Detroit S60 12.7L 430 HP, Fuller 10 Spd OD, 48" Unibit Flat Sleeper, Air Ride Suspension, Aluminum Wheels, Dual Aluminum 130 Gallon Tanks, Stainless Steel Sun Visor, Stainless Steel Half Fenders, Jake Brake, Excellent Rubber, Very Good Shape, Well Maintained
Call 717-733-6208

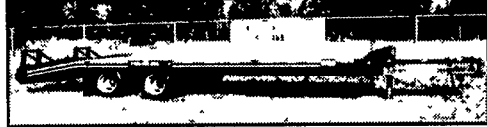
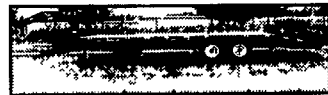
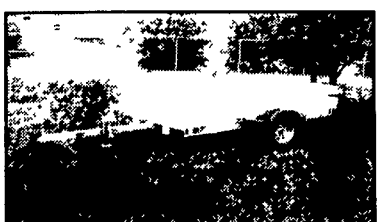
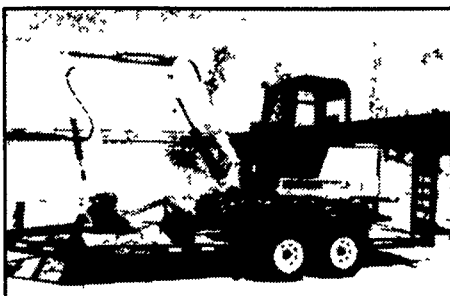


72 Ford LN9000 w/new 3208T Cat,
 250 HP, tandem axle 10-spd., low miles, w/20' grain dump, nice truck . **\$10,500**
610/562-4807

Call For The Lowest Prices Around On Our Enclosed Trailers

 \$4,750 23-ft Long 18-ft Deck & 5 ft Dove Tail Dual Tandem Adjustable Pintle Plate, Oil Bath Axles Spring Assist Ramps Break Away Kit	 \$2,930⁰⁰ Barn Doors \$3,230⁰⁰ Ramp Door 7 X 14 Enclosed 7000# GVW Side Door Stoneguard 2 Interior Lights & 1 Wall Mount Switch Roof Vent Rear Stabilizer Jacks 6 inches Extra Height
 \$3,600 7 x 12 Gooseneck Dumper, 10,000 GVW, Self Contained, Deep Cycle Marine Battery, Brakes on both Axles, Steel Bed, Adjustable Coupler, Stake Pockets, Rub Rails	 \$2,450 16-ft Equipment Trailer, 10,000 GVW Wood Deck 79-in Between the Fenders, Drop Axle Stand Up Ramps, Channel Fenders, Chain Basket
 \$1,495 16 ft with Self Storing Ramps Diamond Plate, Electric Brakes on both Axles, 2-3 500 lb Axles Break Away Kit, Safety Chain Full 82-in Wide Between the Fenders with Dove Tail	 \$2,995 24-ft Gooseneck w/20-ft Deck & 4 ft Dove Tail Electric Brakes on 6,000 lb Axles, Gross GVW 12,000 lbs Stake Pockets Rub Rail Self Storing Ramps, Adjustable Coupler

Appalachian Manufacturing, Inc.
 Phone 330-222-2468 www.appalachianmfg.com Fax 330-222-2283



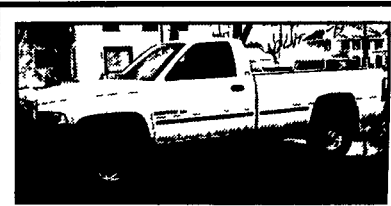
Motorcycle - ATV - Snowmobile
 Utility - Landscape - Cargo
 Car Haulers - Race Trailers
 Hydraulic Dumps - Concession
 Construction - Equipment Haulers
 1500# to 12 Ton Capacity
 8' to 48' Length

KEYSTONE TRAILERS Inc.

• SALES • PARTS • SERVICE • HITCHES
 1657 Rohrerstown Rd. • Lancaster, PA 17601
 Phone 717-581-9020 • Fax 717-581-9055
 www.keystonetrailers.com
 Leasing & Financing Available
 Mon.-Wed.-Fri. 8:00 a.m. to 6:00 p.m.
 Tues.-Thurs. 8:00 a.m. to 5:00 p.m.
 Sat. 8:00 a.m.-12:00 noon

Replacement Parts - Accessories
 Lighting - Wiring Hitches &
 Towing Accessories Brake
 Control - Ramps - Tie Downs -
 Tool Boxes - Motorcycle Carriers -
 Cargo Carriers - Wheels & Tires -
 Bicycle Racks - Load Control
 Straps & Equipment
 On Site Tag, Title & Registration

90 DAYS SAME AS CASH AVAILABLE



1999 Dodge 2500 SLT 4x4,
 360 FI, 5 Spd, AC, PW, PDL, Cruise, Tilt, Cass, 8800 GVW, 4.10 Ld. Slip Rear, Plain Truck w/33000 Mi, White
\$16,900



2001 Chev. 2500 HD, LS
 Ext Cab, 4x4, Longbed, 6.0 Vortec Eng, AT, AC, Pwds, Pdis, Cruise, Tilt, CD, 4 Drs, 9200 GVW, 4 10 Rear, Clean Truck, 55,000 Miles, Grey
\$21,900

MARTIN'S AUTO SALES
 1025 W. Main St., New Holland, PA 17557
(717) 656-6621



2000 FORD F350 CREW CAB DUALY 4x4,
 Power Stroke Diesel, 6-Spd., XLT, A/C, Most Options, 55K Miles, #F2064



Bobby Gerhart's Truck World

2400 E. Cumberland St. Rt. 422 Lebanon, PA 17042
717-273-7995
 Mon. - Fri. 9-8, Sat. 9-3



2000 FORD F250 4x4 XLT
 6- Spd., Power Stroke Diesel, 93K Miles, Blue & Silver, Most Options



98 FORD E350 1-Ton Cargo Van
 Power Stroke Diesel, AT, A/C, 64,000 Miles, Bins & Racks, White #F2043



99 FORD F250 QUAD CAB
 4x4, Power Stroke Diesel, XLT, AT, A/C, Most Options, 49K Miles, Gold



2000 GMC 3500 STAHL UTILITY BODY
 w/Alum. Ladder Racks, 2 WD, Cass, C, T, AL, 350V8, AT, Only 11K Miles, Factory Warranty



97 FORD F350 4x4 SUPER CAB
 Power stroke Diesel, XLT, AT, A/C, Most Options, Maroon, 65,000 Miles, #F2054

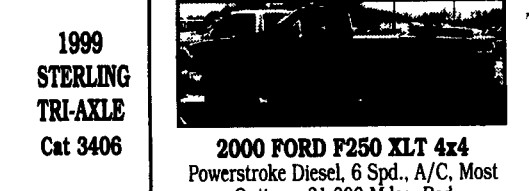


2000 FORD F350 CREW CAB DUALY
 XLT 4x4, Power stroke diesel, AT, A/C, Most Options, CD Player, Alloy Wheels, 40,000 Miles, Black #F2053

2000 KENWORTH TRI-AXLE Steel Body

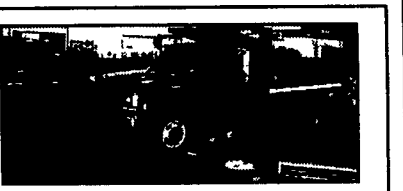


1999 STERLING TRI-AXLE Cat 3406



2000 FORD F250 XLT 4x4
 Powerstroke Diesel, 6 Spd., A/C, Most Options, 31,000 Miles, Red

95 CHEV 3500 4x4 CONTRACTOR DUMP,
 9 ft. Plow, Spreader, 6.5 Turbo Diesel, 5 Spd., 53K Miles, Red



2000 CHEV. 3500 CREW CAB 4X4
 AT, 350 V8, A/C, Cass, 44,000 Miles Ladder Rack, White, #C641



2000 FORD E250 Cargo Van
 AT, A/C, AM/FM, 77,000 Miles, White #F2060



99 FORD F350 CREW CAB DUALY
 4x4, AT, A/C, AM/FM, XL Trim, 80,000 Miles, White



2001 DODGE RAM 3500, 4x4 9 Ft. FLATBED
 Cummins Turbo Diesel, AT, PS, PB, A/C, 50,000 Miles, Red



96 INTERNATIONAL 4700
 LoPro T444E Diesel, 4 Spd., Allison AT, 145 WB, 84 CA, 21,000 GVW, A/C, 2- To Choose From



2002 INT. EXTRA CAB, 22 FT. VULCAN
 Steel Body Roll Back, 25,500 GVW, DT406, 6 Spd, PS, BS, A/C, PW, C&T 20K Miles, 2 Tool Boxes, White Perfect Condition



94 DODGE RAM 2500 4X4
 SLT., Cummins Turbo Diesel, AT, A/C, Most Options 137,000 Miles Black **\$12,995**



97 GMC TOPKICK 6500
 CAT Diesel, Allison Automatic, 26,900 GVW, Rear Sofa Bed and Sleeper Conversion, Both Hitches, Ready to Tow COME & GET IT!! #G235



96 FORD F450 SUPER DUTY
 Chassis & Cab w/Long Wheel Base Power Stroke Diesel, 5-Spd, A/C, Most Options, White



2000 FORD F250 XLT CREW CAB 4X4
 Power Stroke Diesel, AM/FM Cas/CD, AT, PW, PDL, A/C, Running Board, Towing Pkg., Gold 32,000 Mi.



99 GMC 3500 CREWCAB DUALY 9 FT. FLATBED
 w/Both Hitches, 454 AT PS PB A/C 29,000 Miles, White, Perfect Condition! #G233



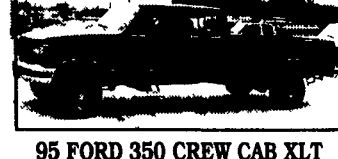
99 FORD F350 CREW CAB 4X4
 Power Stroke Diesel, AT, A/C, XL Trim, 74K Miles, White, #F2063



94 GMC W4 CAB & CHASSIS
 AT, 4 Cyl, Turbo Diesel, 90,000 Miles, 2 In stock



99 FORD F250 4x4
 Power Stroke Diesel, 6-Spd., XL Trim, A/C, AM/FM, 80K Miles, White, #F2065



95 FORD 350 CREW CAB XLT
 4x4 Power Stroke Diesel, AT A/C, Most Options, 132K Miles, Blue & Silver, #F2062