

GOLF CARTS



**SALES
PARTS
SERVICE**

- Fully Reconditioned
- Gasoline & electric powered
- Up to 150 miles on a tank of gas
- Great for farmers, hunters, housewives
- 90 Days Same as Cash

Rock Springs Hardware

1320 Rock Springs Rd. (Rt. 222) • Rising Sun, MD



800-858-0288

35

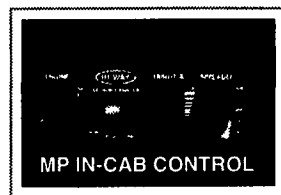
**TRUCKS
AND
TRAILERS**

Dodge 2001, New 3500, diesel, club cab SLT, heavy towing package, dual wheels, bed liner, fold-up cover, heavy duty winch 3/8 cable, 7500 mi. 6 spd, 4wd. 856-785-2579.

Valk 11 ft. snow plow w/pwr angle \$2000
Salt spreader, truck-craft, elec tailgate. Dump body, J&J steel 16 1/2 ft. heated 60" sides.
717-564-6871



MP MODEL P



The MP pick-up mounted deicing spreader features the following:

- Patent-pending Screen-N-Store™ prevents over-sided material entering the hopper and doubles as an off-season storage stand.
- Easy-to-remove spinner assembly to facilitate service and storage
- Fully welded and sealed hopper to resist corrosion.
- Three MP packages available with Tecumseh, Briggs & Stratton, or Honda engines.
- Unpainted 304 stainless steel option for added resistance to corrosion.

For more information contact:

ANNVILLE EQUIPMENT CO.

470 Palmyra-Bellgrove Road, Annaville, PA 17003

717-867-4631 1-800-233-0520

E-mail: aeci@paonline.com Web Site: annvilleequipmentcompany.com
We provide parts & service for new leader spreaders.



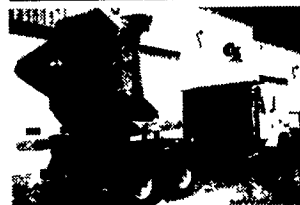
Building the best since 1939.



Model 48
Equipped With: Slide, Steering, Outriggers and Water System



Model 64
Equipped With: Slide, Steering, Water System and Outriggers



Model 74 Low Profile
Equipped With: Slide, Steering, Outriggers, Auto Water Jets, Water Tank, Roof Rack & Hydraulic Tank Combo

Eastern U.S. Distributor.
Fabricator & Installation of Tree Spades, Most Extreme Service Spade on Market, Exclusive Slide & Rear Steering (48" to 144")

Curry Supply Co.

Curryville Pa.

814-793-2829

HUNTER KEYSTONE PETERBILT

1463 Manheim Pike • Lancaster, PA 17604

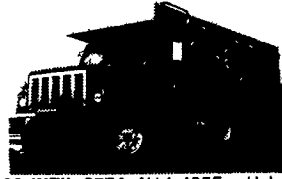
717 299-6630 • 800 243-2458



2000 INT'L 2574: C12-410 w/Jake, 8LL, 18/46 Axles, 220" WB, 4.89 Ratio, Hend Walk Beam, 17" Steel Dump Body, Stock #299315



2000 KWT800 TRIAXLE: C12-430 w/Jake, 8LL, Walking Beam Susp, 17.5' Alum Dump Body, Alum Wheels, Stock #838657



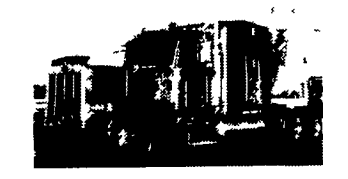
1999 INT'L 2574: N14-435E w/Jake, 8LL, 18/46 Axles on Walking Beam, Locking Diff, 19.5' Alum Baxter Dump Body w/Tarp, Low Miles! Stock# 223460



1996 MACK RD688S: E7-350 w/Jake, 8LL, Camelback Susp., 16'x58" Alum J&J Dump Body w/Elec. Tarp, All Alum Wheels, SUPER CLEAN! Stock #026470



1988 INT'L S1954: 215HP DT466, MT653 Auto, 12/23 Axles, 32,060 GVWR, 10' Steel Dump, Snow Plow, Spreader, InstaChains, 1-Owner Truck! Stock #593098



2001 PETE 379-L: 3406E-500 w/Jake, 10-Spd, 265" WB, 3.55 Ratio, Low Air Leaf, Dual Exh/Breathers, Ultra Cab, Classic III, 63" Hi Rise, Stock# 547150



2001 PETE 379-L: Cat C-15 475HP w/Jake, 13-Spd, 3.70 Ratio, Low Air Leaf, UltraCab, 63" Hi Top, Dual Exh/Breathers, All Alum Whls, Amer Class Interior Stock #557842

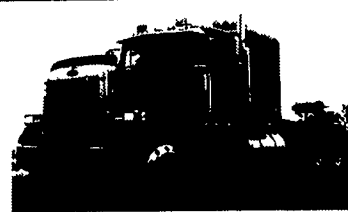
\$ We Buy Used Trucks !!!
Call Chris Vanatta
Used Truck Manager
\$ 800-243-2458 \$



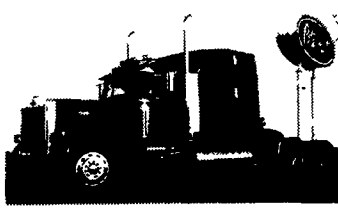
2001 PETE 387: Cummins ISM 425 w/Jake, 13-Spd, 235" WB, 3.70 Ratio, Low Air Leaf, 70" Hi Top, All Alum Whls, Stock #543456



1980 GMC BRIGADIER: 6V92-325 Hp, 9-Spd, 13.6' Steel Dump Body, Stock #564548



98 Pete 379-119: 475 Cat w/Jake, 10-Spd, 238" WB, 48" Flat Top Sleeper, Dual Exh/Breathers, Air Leaf Susp, Stock #458261



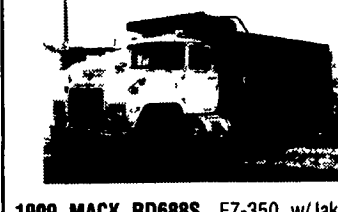
1999 PETE 379-L: 550 Cat w/Jake, 18-Spd, 260" WB, 3.70 Ratio, Amer. Class, Low Air, UltraCab, 63" Stand-Up, 8 New Rear Tires, Stock #N465431



1999 PETE 378: 475 Cat w/Jake, 10-Spd, 3.70 Ratio, 245" WB, Low Air Leaf, Amer Class, Dual Exh, (1) S/S Breather, Alum Wheels, Stock# D493779



1998 INT'L 4900: DT-530E 250HP w/Exhaust Brake, 6-Spd., 32,900 GVWR, Air-Ride, 266" WB, Air Brakes, Reinf Frame, S/S Wheel Covers, A/C, Stock #555279



1999 MACK RD688S: E7-350 w/Jake, 8LL, 18/44 Axles on Camelback Susp, 16' Steel Dump Body w/Elec Tarp, Alum/Steel Wheels, Stock #045867



1997 MACK CH613: E7-400 w/Jake, 13-Spd, 240" WB, 3.70 Ratio, 60" Mid Roof, Air-Ride Alum Wheels, Stock# 075432



(2) 1996 INT'L 9200's: 430 Detroit w/Jake, 10-Spd, 207" WB, 51" Flat Top Pro Sleeper, Air-Ride, Alum Front Wheels, Clean (1) Owner Trucks! Stock# 045602



1998 VOLVO VNL64T: 425 H P w/Jake, 10C, 12/40 Axles, 3.70, 214" WB, Air-Ride, 10 Alum Whls, 61" Sleeper, Stock #735043



1996 PETE 330: 215 H P Cummins, 6-Spd, 31,000 GVW, Air Brakes, Air Ride, Alum Wheels, 24' Morgan Body, Stock #N395422



1993 PETE 379-L: 400 Cat w/Jake, 10-Spd, Air Leaf Susp, 63" Hi Top w/Upper Bunk, Dual Exh/Breathers, Stock #327470