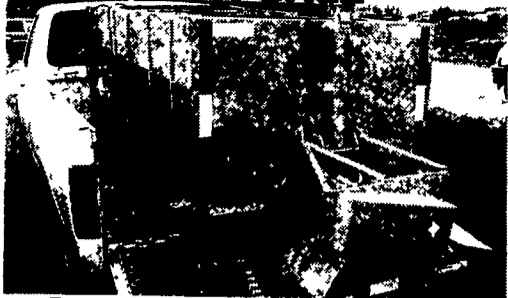


FOR SALE



AG WRAP SALT SPREADER
Electric Start Honda Engine, Hydraulic Drive Salt Spreader-Fits in full size pickup
One Demo Unit Left - \$2,950
Call 800-442-5043 ask for Terry



\$8,800
95 Chev. Silverado, 2500 Turbo Diesel, 3/4 Ton, 8600 GVW, 2 tone blue, 95K mi., 2 WD, Tow package, 1 owner
Phone (610) 767-3293

Chevy Engines New & Reman
Tractor, Backhoe, Loader,
Engines Rebuilt
717-762-6415

1976 Ford F-600, 13' Omaha dump, 20,000 lbs, \$2,100. 717-733-0724.

'88 Blue Bird flat nose bus, 32 pass, Cat power w/ low miles, air ride, air brakes, great for Church or school camper, \$5000 obo. 304-822-3879

87 Freightliner 350 big cam 9 spd, steel bud, air ride, 42 sp, new rears, \$8000. 570/754-7522 after 5pm

(2) 6200 gal. stainless tank trailers, asking \$6000 each. 401/377-4553

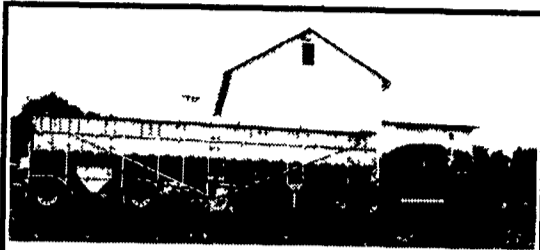
Meyers 10ft power angle snow plow, all lights & controls, \$1600. obo. 8ft Henderson salter, gas powered, \$800 obo. 610-587-6075

'78 Chevy C60 dump truck, 350, 4 spd, 23,000 GVW, runs good, \$4000 obo. 610-587-6075

2000 gooseneck flatbed, 18k tandem duals, 25x5x96, adjustable beavertail w/ramps, \$5200 OBO. 856/692-2227

'00 Ford E350, 15' Supreme hi cube w/load ramp, 5.4 Triton, V8 auto, O/D, A/C, 11,500 GVWR, 42K mi., \$17,500. 717-951-6080.

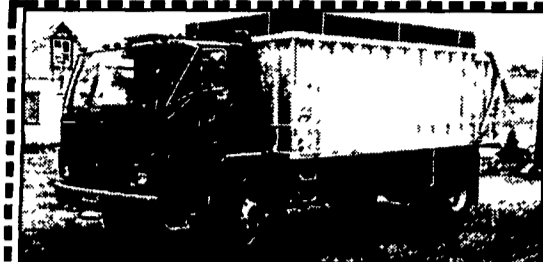
'96 17ft steel J&J dump body, 54" sides + 6" board, complete w/hoist, etc. ex cond, \$6000. Mounted on frame. 18,000# Mack front axle & 44,000# Mack, 4.17 rear axles w/Camelback spring suspension, \$2500. '89 CO9670 International single axle truck tractor (salvage/no title). 89" COE w/sleeper cab, r-300 Cummins dsl (engine spun a bearing) RTX11609P, W2305 Spicer 23,000# single axle, dual 122 alum tanks, Fontaine 23" air slide fifth, 11Rx22.5 tires, (good) w/steel disc wheels, \$1500 obo. '88 F800 Ford, 7.8L, 5 spd, 18' steel flatbed w/4 winches/straps, 76,698 mi, 29,000# GVWR, 20" spoke wheels, \$6500 obo. Blue paint. 301-733-1707 ext 108 Harold Jones



1995 KW W90 OB Very Nice Truck N14, \$25,000. Also, 2002 Trinity Great Trailer 10'2 Spread, \$45,000.
No Sunday Calls
717-694-3917, 717-648-2935.



2000 Kenworth W900L
475 Cat, 18 spd, 72" Aero sleeper. With ravens frameless dump, 40'x102"x72', spread on air, R/T
717-694-3763



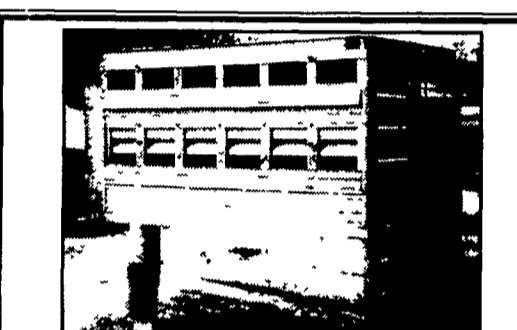
1992 Ford CF 8000 17 1/2 ft. Aluminum Dump with Hyd. Tailgate. 215 Hp Ford Diesel with 6 Spd., 35,000 GVW \$25,500
717/866-2738
717/949-3769 Mornings



\$42,900
1998 Exhd 379 Peterbilt 550 Cat w/Warr., SN:1LW06618 DIS 4-17-98, RTLO18718B, DS404 3:70 on Low leaf, 208wb. Am.Class Int., 450K mi., New Clutch, 40% Rubber, New brakes, New Paint. Nice Clean Truck!
Jerry Hoover
6651 Baertown Rd., Dover, OH. 44622
330-878-6630 M-F 8-5



1986 GREAT DANE
40 ft., 13 ft. high, 45,000 GVW, air ride, 8 ft. deck, 14" drop, 7'1" street side door, (2) 45" curb side doors, 3' pin settings, 9'9" inside ht, logistics, 8:25 R15 spoke, insp. till 5/03, 96 wide, rear barn doors, very good cond., no patches.
\$6,000 717-865-6860



Eby cattle body, fits 8' pickup bed, ramp & rollup door, all openings can be closed, good condition \$1,950 o.b.o.
Berks Co. (717) 821-0494

TRUCKS-2-GO



'03 GMC SAVANA 2500 CARGO VAN
AT, AC. stk# 6366
\$20,295*

LIGHT DUTY COMMERCIAL TRUCKS

'03 GMC 3500 DUMP BODY 4X4
6000 V8, gas, AT, A/C, 8ft. dump body. stk# G461
\$28,995*

'03 GMC BOX VAN
AT, AC, V8, 1200 GVW, 14ft. Supreme body, w/roll up rear door. stk# G394
\$23,495*

0%

'03 GMC SAVANA 3500 CARGO VAN
V8, AT, AC, bucket seats, left & right side doors. stk# G390H
\$21,450*

'03 GMC 3500 4X4 12 FT. DUMPING STAKE BODY
6.6L diesel, AT, A/C, traulering pkg. stk#G453
\$35,295*

for 36 mos. on all
2003 COMMERCIAL VEHICLES
0% Financing in lieu of rebates

'03 GMC SIERRA 1500 HD CREW CAB 4X4
Carbon, 6.0L, AT, A/C, heavy duty traulering pkg. stk# G464
\$29,975*



TONS OF VANS!
Ready for immediate delivery!
1/2 ton • 3/4 ton • 1 ton
Regular & Extended Lengths

SPECIAL COMMERCIAL FINANCING AND GMAC LEASE PROGRAMS NOW AVAILABLE

Bob Kayes - Commercial Truck Sales and Leasing **610-517-3428**
Direct Line

HOURS
Mon-Thurs 9am - 9pm, Fri 9am - 8pm, Sat 9am - 5pm

421 W. LINCOLN HIGHWAY, EXTON
(Route 30 - Across from Applebee's)

866-385-1090
WWW.COLEYPONTIACBUICK.COM
e-mail: JcoleyPBG@aol.com