


# THE ANTIQUE DETECTIVE

Anne Gilbert



**Tables Reflected Changing Needs And Fashions**  
From the 18th century on probably no piece of furniture has changed as much as the table. Its purpose changed from a place to simply eat and drink as did its appearance from utilitarian to spinoffs that held wine, sewing, tea, and other things. By the

19th century there was a table for dozens of purposes, and in many materials from wood to metal. In early Colonial times a table was sometimes also a chair. In antique parlance a "chair table." What began as a simple trestle table, basically a long board, resting on trestles was referred to as "table board and frame."

The hutch table, also known as a "chair table," sometimes had a storage compartment under a hinged seat. Another form, was the circular hutch table built on trestle ends. By the early 19th century the chair table was mounted on turned legs.

Another popular Colonial style was the gateleg table. It took on a new form when it became the single-gate or tuckaway table.

A style unique to America was the "butterfly" table. It had a swing bracket instead of a gateleg. It got its name from the wing-shaped bracket. It came in many shapes and sizes, some with a drawer in the frame.

By the end of the 18th century, the growing American middle class began filling their homes with quality furniture. However, since there homes were modest and the rooms smaller, tables were scaled down to meet their needs. Not for them were smaller versions of old furniture fashions. They wanted a new look. Heavy, old woods such as oak became passe. Popular were mahogany and fruit woods as well as walnut, ebony, and birch.

Comfort dictated new innovations in dining table designs. By the early 19th century either tripod or quadruped pedestals gave diners leg room.

Most of the styles were adapted from English pattern books, such as Chippendale, Sheraton and Hepplewhite. However, these names became Americanized from 1788 to around 1825, and lumped under the name Federal style.

The English custom of tea drinking brought about the American version of the small tea table that could be easily moved. One of the earliest styles was the mahogany tripod.

Designed from practicality it had a swivel top. When not used, it was folded up and placed against the wall.

Another small 18th century table was the wine table, with a pierced gallery top. There were also nested tables, the 18th century version of television tray tables.

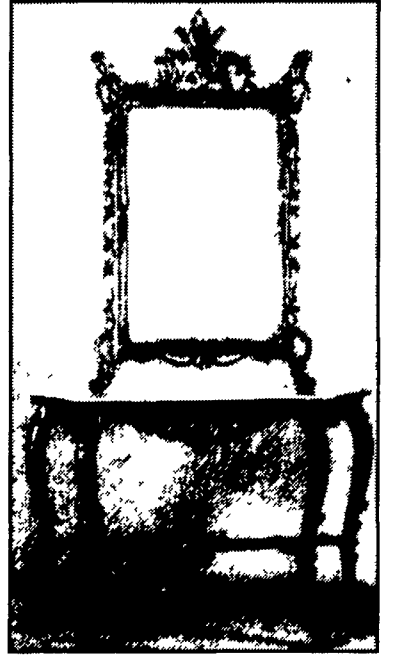
Originally designed by Thomas Sheraton, they are characterized by slender legs and tops, often with inlays of contrasting woods. In the 19th century they were made in and exported from China in black lacquer. When

Card or game tables developed in the 18th century continued, with changes, into the 19th century.

The late 19th century home had grown in size with an entry hall. A hall table, often with a mirror, filled the need for a place for the calling card tray.

**CLUES:** All of these table styles have been and continue to be reproduced; some made in Indonesia these days. To get an idea of what is currently being reproduced look at dealer ads selling foreign reproductions. Older reproductions, made in the 1920s as Colonial Revival, are being collected, since the woods and construction are generally quality.

Ask questions of the seller when paying top dollar. Authentic 18th century and early 19th century examples sell for thousands of dollars.



**Swiss marble top hall table with mirror. Gilt wood. 19th or early 20th century. Photo credit: James Julia Auctions. Fairfield, Maine.**

specially commissioned, they had the owners initials in gilt on the top.

The work table became popular in the late 18th and on into the 19th century. Often they had a decorative fabric skirt underneath. The top lifted up to reveal sewing implements.

## PUBLIC GUN AUCTION

Wednesday February 19, at 5:30 PM

at Kleinfelter's Auction, 105 Chapel St., Lebanon, PA 17046

**Directions:** Lebanon is located 28 miles East of Harrisburg or approx. 28 miles West of Reading or approx. 30 miles North of Lancaster Exit #20 PA Turnpike North Rt. #72 approx. 8 miles to Lebanon.

**Private gun collection of Earl & the late Elam Eckert of Myerstown** over 100 guns. For a complete list phone auctioneer 717-272-7078.

**GUNS:** .22 cal. rifles - Winchester models - 1904-90-1890-68-250-67A-1902-190-72-60A, .22 cal. Remington models-514-12C-511-6-12-41, Stevens, Crackshot & Favorite models, Savage & Marlin .22 cal. rifles, Winchester model 43-.22 Hornet, larger caliber rifles: Winchester model 70, 22-250 cal.-243-270-30-06-7mm-.264, some rifles have scopes, some rifles are new in boxes, some calibers multiple guns. Winchester model "94"-32, Remington model "700"-6mm-22-250-270-30-06-300 Mag, 2 Remington "760"-30-06, some with scopes, Rem. 30 Express, 2 Remington model "6" .32 cal., 2 Savage model "99" .300 & 303 cal., U.S. Springfield mod 1903.30-06, Savage mod. "219"-30-30, Savage mod. "340" 30-30, Ross mod. 1905 .303 British, rare Winchester model 36-9mm Shotgun, Winchester model "12"-20 ga. & 16 ga. shotguns, Win. mod. 24-16 ga., Savage O/U mod. "24" .22 Mag & 20 ga., Rem. 870-20 ga., Ithaca mod. "37" 12 ga., Savage 311C-410 ga. dbl. barrel, 5 Ithaca dbl. barrels, L.C. Smith 16 ga. dbl. Fieldgrade, Fox Sterlingworth 12 ga. dbl., Parker Bros. 12 ga. dbl., LeFever dbl. barrel shotguns, Long Tom shotguns, Stevens, Crescent Arms etc. plus large variety of ammo, gun cases, clothing, etc. Guns can be previewed at 1:00 PM day of auction till sale time.

**Terms Of Auction:** Cash-Visa/MC-ATM.

Checks only if known by auctioneer.

Kleinfelter's Auction

105 Chapel Street, Lebanon, PA 17046 Phone 717-272-7078  
David & Clayton Kleinfelter Auctioneers License #RH-0029L  
FFL Licensed - Food Available

## PUBLIC AUCTION

Furniture, Collectibles, Tiller and Personal Property

Tuesday, February 18, 2003 - 4:00 p.m.

**Location:** Goodville Fire Hall, Rt 23 in Goodville. East Earl Township, Lancaster County. Furniture, Collectibles, Miscellaneous Items.

**Terms:** Cash or PA Check.

**Food provided.**

**Come spend the evening with us!**

**TERMS BY: ESTATE OF HARVEY KURTZ**  
Tracey L. Jones AND OTHERS  
AUCTIONEERS  
(610) 286-7834 AU-3607-L

Visit the Website at:  
[www.tljonesauctioneers.com](http://www.tljonesauctioneers.com)  
Look at last week's ad for more detail listing.



## PRESIDENT'S DAY PUBLIC AUCTION

ANTIQUES, TOYS, FURNITURE

MON. FEB. 17, 2003, 10:00 A.M.

Blizzard date Mon. Feb. 23, 2 PM

Located at Shaffner Auction Gallery, 977 West Main Street, (Route #230) Mount Joy, PA 3 Miles from either Rheems or Manheim/Mount Joy exits of Route #283 midway between Lancaster & Harrisburg PA

Excelsior Mason mechanical bank, #14 cast iron Drummerboy bell toy w/original wooden box, Kenton cast iron log wagon w/Black rider, Hubley cast iron Santa & sleigh w/2 reindeer, Snow White composition doll, Schoenhut piano & xylophone, 1 cent "Brownie Pool" table top arcade game, Gibbs horse drawn cart, Marx vehicles, Lone Ranger guitar, tin litho windmill, Doepke pumper, Structo vehicles, Hubley dog base lamp, Hubley Wimpie paperweight, Roy Rogers lantern, Fisher Price toys, lunch boxes, Mrs. Beasley doll, building blocks, Buck Jones BB gun, Lionel #203 locomotive w/whistling tender, other toys & games, Imperial phonograph w/morning glory horn, ornate oak gingerbread clock, Bitters bottles, **GOOD'S DAIRY ROHRERSTOWN embossed milk bottle**, other bottles, sm wallpaper box, Cinco cigar tin, unusual wooden apple peeler, Harry Book oil on canvas, wicker child's rocker, cast iron footstool, quilts, German books, Bibles, Parrish print, Victorian prints, miniature Steiff-type bear, early tin fat lamp, oil lamps, early sled, cuckoo clock, unusual veg slicer, Keen Kutter food chopper, signed post hole axe, old radios, costume jewelry, 45+ pieces pink & green Depression glass, Fire-King nesting bowls, German nesting bowls, Fiesta disk pitcher, Majolica creamer, Royal Vienna portrait bowl, Zippo lighters, old photos, ironstone tea set, lg. ironstone platter, Vaseline tumbler, carnival, pattern glass, crystal stemware, Lenox, German & Bavarian china, ruby souvenir glass, Stormy Weather Hummel figurine, Jadite bowls, Titanic books, metal Indian lamp, Cherry Boy & Girl figurines, lg. plaster figurine "La Vin," early stuffed Scottie, Aunt Jemima pencil & paper holder, string holder, carnival chalk figurines, Blue Willow, dec ironstone plates, opera glasses, PRR oil can, cast iron items, linens, **MORE!! FURNITURE (3-PM):** Walnut Victorian hall rack w/marble insert & double umbrella holder, unusual Victrola VV8-30, grained blanket chest, spinning wheel, marble top table, Victorian medallion back love seat, oak ext table w/5 boards, oak library table, spinet desk, lg gilt mirror, cedar chests, 3 pc twig set, bamboo/oak shelf, child's roll top desk, platform rocket, wicker fernery, iron bed & crib, saw buck table, depression china & buffet, high chest w/mirror, oak stands, walnut Eastlake mirror, 4 spindle back chairs, oak treadle sewing machine, other chairs, stands, etc.

**UPCOMING - See WWW.SHAFNERAUCTION.COM for auction calendar & details.**

Shaffner Auction Co. 717-492-0004  
Mark Diffenderfer AU-2897-L  
Marty Fleck 717-413-6238

"We treat your property as if it were our own"  
[www.shaffnerauction.com](http://www.shaffnerauction.com)

## "Horst Auction Center"

### PUBLIC SALE

Antique, Military, Collectible & Modern Firearms  
Military & Hunting Accessories & Collectibles

SAT., FEB. 22, 2003

AT 9:00 A.M.

Sale to start w/catalogued guns followed by hunting & military accessories.

Preview - Friday, February 21 from 1 P.M. to 5 P.M.

Sale to be held at the Horst Auction Center, located at the corner of Rt. 322 & Durlach Rd. (approx. 2 1/2 miles west of Ephrata), Ephrata, Lancaster Co., PA.

**196 LOTS OF FIREARMS TO BE SOLD!**

"Highlights" Rifles; Shotguns; Handguns;

**SPECIAL MENTION:** NIB Winchester commemoratives - excellent U.S. Remington 03A3 - CYQ P-38 - L.C. Smith 12 & 20 ga. doubles - Greener horse killer - Several Colt .45 auto & SAA commemoratives - Browning BT100 trap gun - Ruger 77RS .35 Win.; - Benelli sport 12 ga. auto. - Browning 1886 SRC high grade - Frederick Remington commemoratives.

**MILITARY & HUNTING ACCESSORIES & COLLECTIBLES: LG. SELECTION OF U.S. MILITARY SURPLUS**

Game Commission Posters;  
Recurve Bows; Ammunition;  
Many Other Items to be sold!

\* A detailed catalogued listing is available by sending \$2.00 to the Horst Auction Center, 50 Durlach Rd., Ephrata, PA 17522, or is available w/many photos on our website [www.horstauction.com](http://www.horstauction.com).

\*\* All firearms will be sold subject to Federal and State Firearms Laws.

\*\*\* No out of state checks without prior approval.

## HORST AUCTS.

AU438L  
T. Glenn (717) 859-1331 (717) 738-3080  
Timothy G. Fax # (717) 738-2132  
Thomas A. [www.horstauction.com](http://www.horstauction.com)  
"VOICES OF EXPERIENCE"

## PUBLIC AUCTION

FARM MACHINERY - TRACTORS  
PERSONAL PROPERTY - ANTIQUES  
SAT., FEB. 22, 2003  
9 A.M.

LOCATION 133 White Oak Rd., New Holland PA From Blue Ball Rt 322 west approx 1 1/2 mi., turn right onto White Oak Rd to auction on right (Earl Twp., Lanc Co.)

**TRACTORS & CRAWLERS - SKIDLOADER**

JD 4230 Diesel Trac, Quad Range, On Steel  
JD 2630 Diesel Trac, w/Rabbit & Turtle on Rubber  
JD 2240 Diesel Trac Tiger Stripes, Ind PTO on Rubber  
JD B Trac on Rubber Ex Cond  
JD 350B Crawler w/Loader  
Case 1845 Skidloader  
Allis Chalmers M Crawler  
Farmall B Hi Clearance Trac w/Tob Sprayer

**FARM MACHINERY**

IH 125 3x16 rollover plow, JD AW 10' trans disc, Dunham 10' cult w/center bearing, JD 3 sec 10 harrow, JD 494A 4R cornplanter w/disc openers, JD 32B 200 gal pull type sprayer, JD 400 3 pt rotary hoe, JD 1219 haybine NH 256 hay rake w/dolly wheels, Pequea 710 PTO tedder, JD 338 baler w/40 thrower, 16' tubular steel rack wagon w/JD 1065 gear, NH 36' bale elevator, NH 680 tandem axle manure spreader, JD FBB double disc grain drill w/all box JD 714 3 beater forage wagon w/roof, NH 27 Whirl-A Feed blower, JD 65 forage blower, Little Giant corn drag, (2) gravity bin wagons, JD 350 sickle bar mower, JD 50 side mt mower JD 506 3 pt 5' rotary mower, JD 3 pt C381 fert spreader, Allied 6"x36" PTO grain auger, Hershey 2 row tob planter, JD 4R cult, JD & IH tool bars, 50' JD 9 silo pipe, dump trailer 2000 tob lath, bale boxes, grain aerators, 4 ton Brock feed bin David Bradley garden trac w/attach

**PERSONAL PROPERTY - ANTIQUES - BUTCHER TOOLS**

2 warm morning stoves, Delaval cream separator, wood butter churn, wooden rocker, oak bed, wicker baby carriage, assort crocks, green & blue canning jars, Enterprise #16 cherry seeder, Kero heaters, gas heaters wooden tub, Chifforobe, meat platters, homemade soap cane seat rocker, oak treadle sewing machine cabinet Popeye & Sigmond lunch kettles, inlaid end table, oak stand, crib, waterfall bed, **BUTCHER TOOLS:** Butcher block butcher turnace & kettle, Enterprise Saus stuffer, copper kettle old elect meat slicer, meat grinder, hog scrapers, plus other items  
NOTE Auction to begin with wagon items & household goods Butcher equip approx 12 noon followed by farm machinery No out-of-state checks unless approved by auction co prior to sale day Food Stand

**Auction By:**  
Randal V. Kline, Roy E. Good, Jr.,  
Keith Snyder, Auctioneers  
(717)733-1006  
Lic. #499L - #2116L - #3433

**Terms By:**  
Lloyd & Emma  
Zimmerman  
717-354-9461



[www.klinekreidergood.com](http://www.klinekreidergood.com)