

Satellite Program To Provide Basics Of Pond Management

MONTROSE (Susquehanna Co.)—Ponds can provide many recreational benefits to homeowners, but they have their share of problems, says a water resources specialist in Penn State's College of Agricultural Sciences. "Some may develop leaks or fill with sediment," says Extension Associate Bryan Swistock. "The water may be muddy, or choked with weeds and algae. And sometimes, that big fish you hoped would be there for the kids to catch just doesn't materialize."

To address the basics of pond management, experts from Penn State, the Pennsylvania Fish and Boat Commission and Mansfield University will offer a live satellite clinic from 7:00 p.m. to 8:30 p.m. on Feb. 27. The program will be aired locally at the County Office Building in Montrose through Penn State Cooperative Extension, of Susquehanna County. The actual program will begin at 7 p.m.

Swistock recommends that

people who own a pond develop a management strategy depending on their goals. "How you manage your pond depends on your goals," he explains. "People who want a pond for swimming, for instance, usually want a clean, sandy bottom without many weeds. But if you want a good fishery, you'll need some plants and structures."

During the program, the experts will offer tips and advice on common pond problems and

proper management. Attendees will be able to ask questions by telephone and fax.

"The most frequent questions involve the control of aquatic plants and weeds," says Swistock, "so we'll spend time discussing how to identify and control nuisance plants and algae. We also get a lot of questions about fisheries, so we'll discuss the best kinds of fish to stock, the species to avoid and how to harvest to keep the populations bal-

anced." Other topics will include getting permits, general pond maintenance and testing water quality.

Professional pesticide applicators can receive re-certification credits for attending the program. The clinic is free, but pre-registration is required. For more information on the satellite program or on pond management, contact the Susquehanna County office of Penn State Cooperative Extension at (717) 278-1158.

Pa. Junior Brown Swiss Contest Calls For Entries

CARLISLE (Cumberland Co.)—The Pennsylvania Brown Swiss Association is sponsoring a youth production award contest, with the winning production awards to be announced and presented at the annual Brown Swiss meeting, Saturday, March 22 at the Bonanza Restaurant in Carlisle. The meeting begins at 11 a.m.

There are three simple rules in applying for the award:

1. Any Jr. Brown Swiss member who was age 9 through 19 on Jan. 1, 2002, and owns a registered Step 2 IE Brown Swiss cow which they owned before it was 2 years old, and which has completed a 305-day lactation between Jan. 1 and Dec. 31, 2002 is eligible to compete.

2. The cow must be registered solely in the junior's name.

3. A copy of the DHI sheet for the month the 305-day record was completed and a copy of the

cow's registration paper must be mailed to and postmarked on or before March 3 to: Joy Crothers, 301 Whiteside Dr., Oxford, PA 19363.

Be sure to include your name, address, and telephone number on the paper.

The 305-day records will be adjusted to an ECM (energy corrected milk) basis.

The three highest ECM records will be awarded in the following age groups: 2 year-old, 3 year-old, 4 year-old, 5 year-old, and aged cow.

Every junior member who enters a production record will receive a participation award.

Call Joy Crothers at (610) 932-0723 if you have questions.

Small-Scale Fruit Meeting

MANSFIELD (Tioga County)—An upcoming meeting is targeted for Master Gardeners and others who want to grow fruit on a small scale.

Programming segments will include general information on fruit selection, care, pest identification, cooperative extension resources, tree fruit planting and care, and blueberry planting and care.

The meeting will be conducted Saturday, March 1, 10 a.m.-1 p.m. at "Murphy's Blueberry Farm," Mansfield.

Instructors for the course include extension agents Jeff

Mizer, Snyder County; Earle Robbins, Tioga County, and Charlotte Lyon, Bradford county.

Cost is \$5 for refreshments and educational materials.

Please RSVP to the Tioga County Cooperative Extension at (570)724-9120 or Tiogaext@psu.edu

Directions: From Mansfield Left on Mulberry Hill Road -off of Route 6- West of Mansfield. Follow to T. Take a right. First Driveway on the right.

From Wellsboro: Right on Valley Road (near PA state Police barracks) Take second right. Second driveway on the left.

Farm Family Celebration

HAMBURG (Berks Co.)—The third "Farm Family Appreciation Celebration" is scheduled for March 8 at 7 p.m. at the Hamburg Field House.

The goal of the celebration is to unite both farmers and non-farm families and provide a positive, fun event to celebrate the important role of farm families in the community.

The event includes a hot buffet

dinner and square dance. Tickets to farm families are no charge. Farm family supporters can obtain tickets at \$9 per adult and \$5 per child (ages 3-11), with children under 3 at no charge. A free will offering will be available at the door.

Call Penn State's Berks County Extension at (610) 378-1327 for registration information. Deadline is February 26.

Central Susquehanna Beef Meeting Set

NEW COLUMBIA (Union Co.)—The annual Central Susquehanna Valley Beef Producers Winter Educational Meeting will be conducted on Thursday, Feb. 27 at 7 p.m. at the Bonanza Restaurant near New Columbia.

Those who want to eat at the restaurant can join the group at 5:30 p.m. for supper.

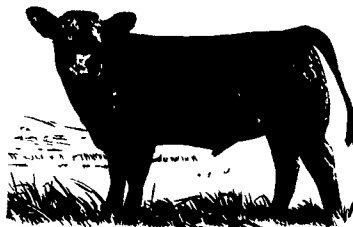
Guest speakers for the meeting will be Dr. Harold Harpster and Dr. Michael O'Connor, both from the Department of Dairy and Animal Science at Penn State University.

Harpster will speak on packag-

ing, storing, and feeding systems for forages to reduce wintering costs for beef cattle in Pennsylvania. O'Connor will speak on new developments in estrus synchronization for cattle.

Persons who would like to eat with the group need to call Dave Hartman at the Penn State Extension office in Columbia County at (570) 784-6660 or email at dwh2@psu.edu to register.

The Bonanza Restaurant is located at the New Columbia exit of Route 15 just south of Interstate 80.



MUSSER & ASSOCIATES, INC.



Pole Buildings **Horse Barns**
Garages **Commercial Buildings**
 800-331-1875
 717-354-7561
 Cell # 570-452-6329
 Fax 717-355-9181

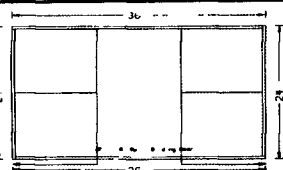
SALES
 "The Pole Building Specialists"
FABRAL

Reuben Esh
 245 Fetterville Rd.
 East Earl, PA 17519

The Charleston: 4 Stall Barn 24'x36'x10'

1-12'x10' Split Slider Door
 1-3' Steel Entrance Door
 12" Overhang on both 36' sides
 4-8' Skylights in the roof
 All Painted Steel Roof & Sides
 (Stall Pkg. 4-12'x12' add \$7,200)

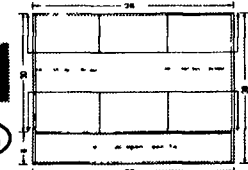
\$8295



The Saratoga: 6 Stall Barn 30'x36'x10'

2-10'x10' Split Slider Doors
 1-3' Steel Entrance Door
 12" Overhang all 4 sides
 8'x36' Open Lean To
 All Painted Steel Roof & Sides
 (Stall Pkg. 6-10'x12' add \$10,200)

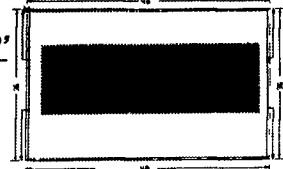
\$11,995



The Belmont: 8 Stall Barn

2-12'x12' Split Slider Doors
 1-3' Steel Entrance Door
 12" Overhang all 4 sides
 6/12 Attic Truss with Loft
 All Painted Steel Roof & Sides
 (Stall Pkg. 8-12'x12' add \$12,800)

\$21,900



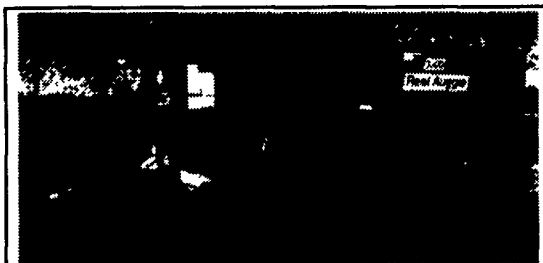
The Aqueduct: 70'x120'x14'

2-14'x14' Split Slider Doors
 1-3' Steel Entrance Door
 12" Overhang all 4 sides
 48" High Side Lights on 2 sides
 All Painted Steel Roof & Sides
 Engineered Plans & State Seal

\$65,500



Many other styles & sizes are available.
 Call for details or check us out on the web at: www.fettervillesales.com

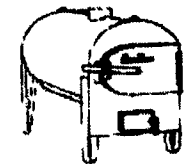


KNIGHT 3300 GOOD CONDITION \$8,900
 WITH POWER DISCHARGE \$9,900
 NDE 551 Vertical Mixer-DEMO CALL
 NDE 401 Vertical Mixer-DEMO CALL
 side discharge no conveyor

Agri-Service LLC
 Rental & Custom Services
 14137 Pennsylvania Ave - Hagerstown, MD 21742
 (901) 665-9333 or TOLL FREE (877) 412-4224

Aqua-Therm Outside Wood Burning Furnace

- Clean - Easy
 - Safe - Efficient



Buy the top of the line!
 *Stainless Steel Fire Box
 *Ash Removal Auger
 *15 Year Warranty
 *Thermostatically Controlled

Heat your house, shop and/or hot water with one unit

For more information,
 call 717-838-9270 or 1-888-382-8170

Email: mkpowell@paonline.com

Roof Systems/ Painting • Coating

All Types Interior/Exterior Painting & Coating
 Specializing in:

- Spray Painting • Hand Painting
- Water Blasting • Water Proofing
- Deck Restoration & Coating
- Stone & Brick Restoration
- Roof Restoration & Coating

Liquid Applied Roof Systems

- * Seamless -Cure-in-place - Cold Process, No Flame - Renewable - Leak Proof
 - * No Need to Tear Off Old Roof Systems
 - * Coating to Cool Roof - (Save up to 20% on Cooling Cost)
 - * Metal - Flat-Asphalt - EPDM - Modified
- We have the right Product & Solution to Solve your Roofing Problems

Ten year manufacturers Warranties Available

Capital Painting
 717-768-0979

Clean, fresh, quality drinking water on your farm could make a bigger difference than you think.



See us at the
NEW YORK FARM SHOW
 Dairy Building #728

Martin
 WATER CONDITIONING

Myerstown • Brownstown
 • Stoystown • Cleona
 • Quarryville
 PA - 800-887-7555
 NY - 800-225-0791
 Serving PA, NY, NJ, DE, MD
 Your Water Treatment Center