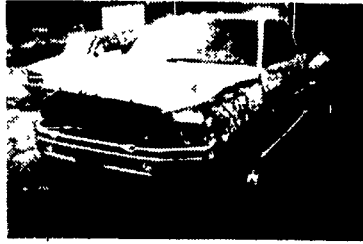
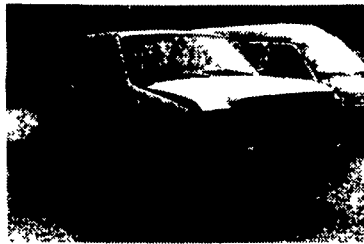


THOMPSON MOTORS INC.
Main Street & 412, Springtown, PA 610/346-8588
5 Miles East of Route 78 (Exit 69)
9-9 Daily 9-8 Saturday

REPAIRABLE 4x4's



2000 Dodge 3500 X/CAB Dually
Diesel, A/T, SLT, 48K,
Front Dam \$15,500



2000 FORD F250 X/CAB 4x4
Diesel, A/T, XL, 105K,
Front Dam \$9,800



2001 FORD CREW CAB Dually
Diesel, A/T, XLT, 100K, Minor Side
Damage \$22,500



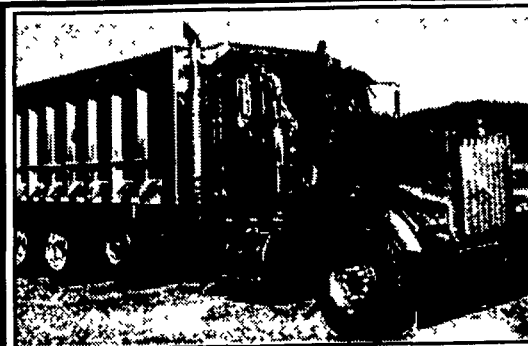
2002 CHEV. 3500 X/CAB Dually
8 1 V8, A/T, LT Pkg, 15K, Bedside
Damage \$21,500

9-9 Daily 9-8 Sat.

Also in Stock: 00 Ford Dually Diesel 4x4 - \$11,500,

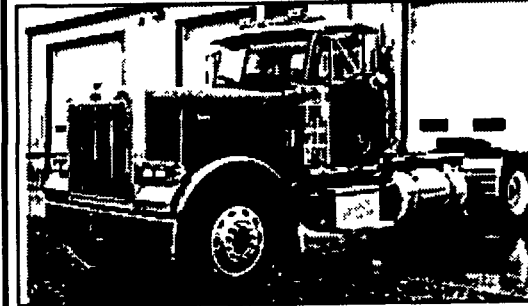
96 Ford Crew 4x4 Diesel - \$5,900, 95 Dodge 2500 4x4 Diesel - \$6,900

Try our "FAX ON DEMAND" inventory list at 888/755-1041



2002 W900L Kenworth Triaxle

SN. 899575, 475 C15 SN. 6NZ64435, 5 yr. 300k warr.,
RTLO18918B, DS463P 4-11, AG200, All Alum. 24 5, VIT
Interior, 18" East 71" sides w/heated body, 21k mi.,
Like New! \$95,000



1998 Exhd 379 Peterbilt

550Cat w/Warr, SN ILW06618 DIS 4-17-98,
RTLO18718B, DS404 3 70 on Low leaf, 208wb Am Class
Int, 450k mi., New Clutch, 40% Rubber, new brakes, New
Paint Nice Clean Truck! \$42,900 Rep Photo.

Jerry Hoover 330-878-6630 M-F 8-5
6651 Baertown Rd
Dover, OH 44622

35 TRUCKS AND TRAILERS

1989 IH single axle tractor, Model 1950, 466 DT engine, 7 spd trans. Engine rebuilt-2500 mi, total miles on truck 150,000. Also 32 ft drop deck trailer w/beaver tail & ramps, both units Very Good Cond.

Lycoming Co
570-494-0441

36 REAL ESTATE

Hunting land in Alagancy Co NY, almost 100 ac w/ out camp \$150,000. Almost 70 ac w/camp \$125,000, more info-- 607-356-3478

103 Acre Limestone farm. Lebanon Co, PA. Jackson Twp. Zoned Industrial & Ag. Level land w/ frontage on 2 roads plus Conrail Railroad frontage. All bldgs in good cond. Rare property loaded w/potential. \$1.6M. Call Randal V.Kline @ Kingsway Realty 717-569-8701 ext 127

4 Acres, beautiful stone front contemporary ranch home built 1988, 2BR, 1 bath, 2-car garage, full dry basement, 20x50 pole barn, partial fenced-in pasture. Denver area. \$195,000. 717/336-4511

Reduced! 2040 sq.ft. colonial home, 3BR w/walk-in closets, 2 1/2 baths, central air, stove & refrig., unfinished room above 2-car garage. 5.75 ac. Huntingdon Co, PA. Joins State Game Lands. Great hunting. \$142,000 814-259-3858

Very nice large 28x70 double wide 3BR, 2BA, formal LR, DR, FR w/ fireplace, must be moved, \$55,000. 610-558-4464.

Farm, Free gas, Clarion Co., PA. Border Twp, 71+ acs, spring fed pond, bank bank 55x60, 4br, eat-in oak kitchen, heated 2 car garage, well, septic, all rights gas, etc w/sale. Taxes \$867.00. Nice area. Beautiful fields. 1-800-922-1235 ext 533 or 814-275-2164

Woodbury Township, Williamsburg Pa, 14 ac Farmette, 3Br & 2 Ba, fruit trees & more! Borders State Game Land. 814-946-9355, Diana-Re/Max Results Realty, 1001 Logan Blvd

Lancaster based building company, willing to pay top dollar for land in Lancaster Co., PA. Must be zoned residential. Public water & sewer a plus. 717-393-1239

Family would like to buy or lease/purchase a farm or farmland in Eastern Lanc Co 717/361-6379

Country rancher 1.52 ac, Fulton Co, 3Br, stone fire-place, 2 car garage, Mint cond \$138,000. 717-485-0410

Rent or Lease, large building, zoned Ag on Rt 322. 717-838-0166

Farm for sale, 78 tie-stall dairy/crop farm, 350A. 315-568-9958.

Farmette 7.65 ac, 4 br cape cod, 30x40 barn/shop, 50x120 pole bld. Amish community, reduced \$210,000. Colescott Realty, Barry eves @ 570-286-5808.

50 Ac farm. Nippenose Valley. 40 cow dairy barn & other barns. Established produce stand along RT44 Hwy. Remodeled lg house. Abner King, 5190 S.Rt 44, Jersey Shore, PA or call 570-745-3114

Southern York Co., PA 11+ Acres, pond, stream, new well, barn, 3br house. Ideal for produce or flowers. \$138,000. 717-927-9445

Wanted to Rent or Lease: PA farm south of PA Turnpike. Any condition considered. Will consider rent or lease to own on 100+ acre tract. 717/445-5917 anytime

Clinton Co., Exit 178 I-80 U.S. 220. 63 ac 2nd hwy intrchnng com 2500 Twtnshp Rd, front E. end Nittany Vly, grt view, Hi vol traf & viz 570-726-3571

PERRY CO., PA horse farm. 8 acs, newly remodeled 5br 2 bath house w/screen porch, 6 acres pasture w/new white board fence, 2 y/o horse barn 8 stalls, blacktop driveway, 5 y/o shop/rec room 30x52, nice view of Conacocheague Mt. Very well kept, great place for someone who loves horses & the country. Best offer within reason. Serious inquiries only. 717-789-2336 leave msg Deer Ridge Construction

Christmas Tree Farm & Land, Bloomsburg Area, 72 Ac. 40,000 Christmas Trees, Doug Fir 5'-Up. Great Hunting, Fishing Locally, Spectacular Views. \$150,000. 610-269-1893. Discount Available for Quick Settlement

SCRAP YARD FOR RENT
With or without some equipment
Call (717) 453-7840 9 to 12
Call (717) 453-0727 12:30 to 9PM

Perry Co. Farmette:
8 acres, Cape Cod house, 40x60 bank barn, 6 horse stalls, close to Little Buffalo State Park, Middle Ridge Rd, Newport, PA, priced to sell, **\$125,000**
(717) 582-3566

CECIL COUNTY MARYLAND
390+/- ACRE FARM 1.5 Miles north of Elkton. 16 room main dwelling, 2 tenant houses, large dairy barn and silo. 2 good running streams. Call Century 21 Towne Center, Patrick Ulrich Realtor at 410-398-3068 for details.

24 HOUR PARTS & SERVICE
MON - 6AM
SAT - 12 NOON

Bergey's
TRUCK EXCELLENCE SINCE 1924

GMC COMMERCIAL
Mack VOLVO
SALES HOURS
M-F 8:30am - 6pm
Sat 8:30am - 12 noon

TRUCK CENTER

ROUTE 113, FRANCONIA, PA **CALL TOLL FREE... 1-877-237-4393**

• 3 Miles South from the Souderton Exit of Rt. 309
• Minutes from Exit 31 of I-476 (N.E. of PA Turnpike)

CLEAN TRUCK! • 1-877-BERGEY3



1994 VOLVO FE42 CAB CHASSIS
#7458, 195" WB, 33,000 GVWR,
Cat Diesel, 6 Speed Trans, 433 000 miles,
CLEAN TRUCK! MUST SEE!
SALE PRICE REDUCED TO \$7,900

CHASSIS CAB! • 1-877-BERGEY3



1999 GMC HD3500 CHASSIS CAB
#7428, 199" WB, 33,000 GVWR, D
108" CA, 59,700 Miles
SOLD PRICE \$14,750

LOW MILEAGE WINTER WORK TRUCK!



1998 GMC K3500 4X4 DUMP TRUCK
#7510, Diesel, 5-Speed Manual Trans,
Western Snow Plow, Salt Spreader,
New State Inspection, 27,000 Miles,
Needs Minor Repairs
PRICED TO SELL! \$20,880

PRICED TO SELL! • 1-877-BERGEY3



1997 GMC C6500 CHASSIS
#7284, 3116 CAT Diesel Engine, Allison Auto
Trans, 25,950 GVWR, Air Cond, Complete
Maintenance Records, 243,000 Mis
SALE PRICE REDUCED TO \$15,450

EXCELLENT CONDITION • 1-877-BERGEY3



1999 ISUZU FTR DUMP TRUCK
#7584, 19,600 Original Miles, 32,000
GVWR, 6-Speed w/2-Speed Rear,
EXCELLENT CONDITION!
SALE PRICE \$28,800

DUAL 100G. FUEL TANKS-1-877-BERGEY3



1995 VOLVO WIA64TES
#7432, Volvo VE D12 engine @425 HP, 9-Speed Trans,
Air Ride Susp 24 5 Tires, Aluminum Wheels,
Dual 100 Gal Fuel Tanks, 692,000 Miles
SALE PRICE \$12,900

15' STEEL BODY! • 1-877-BERGEY3



1987 MACK RD685S
#7490, EM6-237, 6-Speed Trans, 18K
Front 38K Rear, 15' Steel Dump w/ Pintol
Hook & Full Trailer Connections
SALE PRICE \$12,900

PRICED TO SELL! • 1-877-BERGEY3



1996 GMC C6500 "LO-PRO"
#7459, 16 Dry Freight Van Body, 200 CAT
HP Diesel, 6-Speed Trans, 25,950 lb
GVWR, 214,000 miles, MUST SELL!
SALE PRICE REDUCED TO \$15,400

PRICED TO SELL! • 1-877-BERGEY3



1987 DIAMOND RIO "GIANT"
#7343 NTC 300 Cummins 10 Speed Trans,
17'6" Aluminum Dump Body, 555 000 miles
SALE PRICE REDUCED TO \$14,450

26' REEFER BODY • 1-877-BERGEY3



1996 VOLVO FE42
#7590,
26' Reefer Body
& TK RDII Unit
33,000 GVWR,
VED7 Engine @
230HP, 6-Speed
SALE PRICE \$19,850

22' REEFER BODY • 1-877-BERGEY3



'98 GMC 22' REEFER
#7596, 1998 GMC 22' Reefer Body & TK RDII 50SR Unit,
25 950 GVWR, Cat Diesel, 6-Speed Trans
SALE PRICE \$32,900

24' VAN BODY! • 1-877-BERGEY3



1999 GMC 24' VAN BODY
#7594, '99 GMC 24' Van Body, 33,000
GVWR, 230HP Cat Diesel,
Allison 5-Speed Trans, 202,000 Miles
SALE PRICE \$25,900

TRY BERGEY'S... "TRUCK SPECIALISTS SINCE 1924!"

PRIOR DEALS EXCLUDED ALL PRICES INCLUDE FREIGHT, DEALER PREP, ANY APPLICABLE FACTORY REBATES & FACTORY EQUIPMENT DISCOUNT PACKAGE (IF APPLICABLE), ANY COUPONS & BERGEY DISCOUNT TAX, LICENSE & DOCUMENT FEES COST EXTRA. VEHICLES SHOWN FOR ILLUSTRATION PURPOSES ONLY NOT RESPONSIBLE FOR TYPOGRAPHICAL ERRORS. PLEASE PRESENT AD FOR ADVERTISED PRICES PRIOR TO PURCHASE BERGEY'S INC