

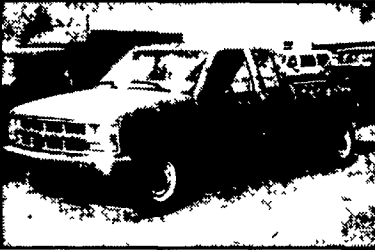
**1996 CHEVY CHEYENNE**  
2500, 4x4, 350 Auto, PS, PB, Cruise, Tilt, Air, AM/FM Cass, 8600 GVW, 62,000 Miles, New Tires, Dark Green  
**\$12,500**



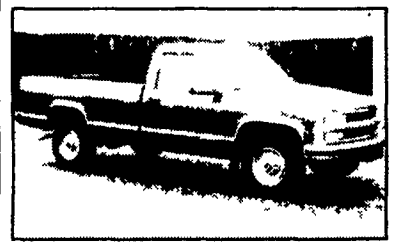
**1995 CHEVY CHEYENNE 2500 HD**, 350 Auto, PS, PB, 8600 GVW, 97,000 One-owner Miles with Reading Space Cap, Ex Cond  
**\$6,900**



**1999 CHEVY CHEYENNE 2500**, 2WD, 350 Auto, PS, PB, Cruise, Tilt, Air, AM/FM Cass, 8600 GVW, 62,000 One-Owner Miles  
**\$10,900**



**1997 CHEVY CHEYENNE 2500**, 2WD, Ex Cab, 350 Auto, PS, PB, Cruise, Tilt, Air, AM/FM Cass, 8600 GVW, Towing Package  
**\$10,900**



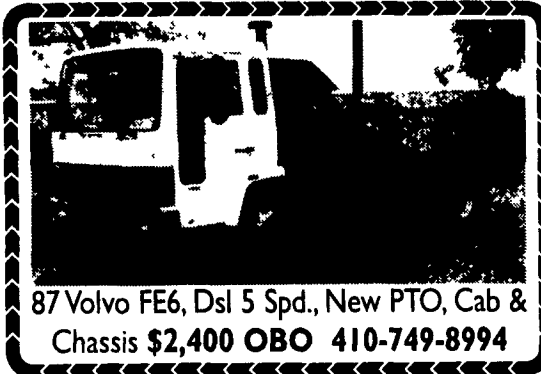
**1995 CHEVY CHEYENNE 3500**, 2WD, 350 Auto, PS, PB, Cruise, Tilt, Air, AM/FM Cass, 9000 GVW, 60,000 Miles, Like New  
**\$9,400**



**1995 GMC SLE 1500**, 4x4, Suburban, 350 Auto, PS, PB, PW, PDL, Cruise, Tilt, Air, AM/FM/Cass, Newly Rebuilt Trans With Warranty, 97,000 One-owner Miles, New Radials, Burgundy  
**\$11,500**

**A&J AUTO SALES**

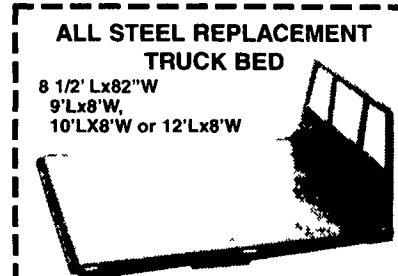
798 E. Main St., Rt. 322 East, Ephrata, PA 17522  
**717-733-2873**



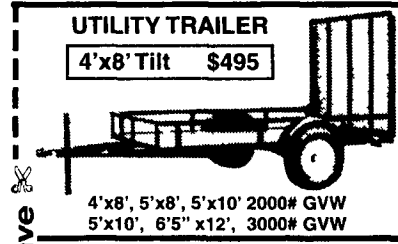
87 Volvo FE6, Dsl 5 Spd., New PTO, Cab & Chassis **\$2,400 OBO 410-749-8994**



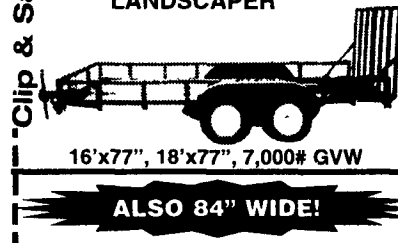
**\$9,500 \$6,500**  
1984 Int. Hay Truck, DT466, 210 hp, Holds 400 Bales. 29-1/2', Lift Axle, 250K Mi., Good Cond. Comes w/Tarp & Straps  
**(732) 501-3160**



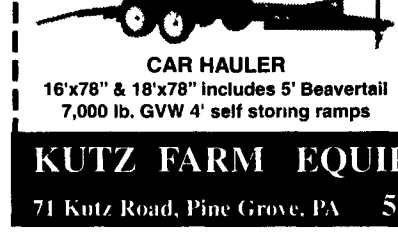
**ALL STEEL REPLACEMENT TRUCK BED**  
8 1/2' Lx82"W  
9'Lx8"W,  
10'Lx8"W or 12'Lx8"W



**UTILITY TRAILER**  
4'x8' Tilt **\$495**



**LANDSCAPER**  
4'x8', 5'x8', 5'x10' 2000# GVW  
5'x10', 6'5" x12', 3000# GVW



**CAR HAULER**  
16'x78" & 18'x78" includes 5' Beavertail  
7,000 lb. GVW 4' self storing ramps

**Clip & Save**  
**Quality Trailers Built Locally By "PA International"**  
**Car Dollie \$795**  
**This Week's Special**  
Used 19' General 15 Ton Deck Over Trailer **\$2,750**

19 Ft Hydraulic, Tilt Trailer, 10,000 lb GVW **\$3,495**  
Used 19ft 12 Ton Trailer **\$1,500**  
Pull Type Ground Driven & 3 pt Fertilizer Spreader  
ATV Hauler, 3000 lb GVW, 7'x10' **\$1,095**  
7'x12' **\$1,195**

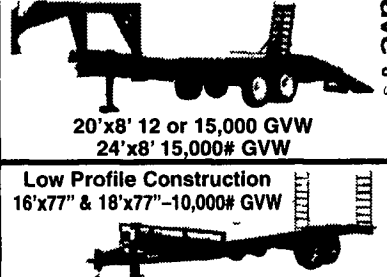
**Over 200 Trailers IN STOCK**  
Starting At **\$495.00**  
T-Plates  
**DEALERS WANTED**



**HIGHWAY HYDRAULIC DUMP BRI-MAR**  
**FREE BATTERY**  
5'x8' 3,000# \$2,295 6'x10' 10,000# \$3,295  
5'x8' 5,000# \$2,595 7'x12' 10,000# \$4,095  
6'x10' 7,000# \$2,995



**LOW PROFILE DUMP TRAILERS BRI-MAR**  
Other Sizes Available  
6'x12' 10,000# **\$4,295**  
6'x10' GVW 7,000# **\$3,495**  
10,000# **\$3,895**  
**FREE BATTERY**



**GOOSENECK SIZES: w/4' Adj. Tail**  
20'x8' 12 or 15,000 GVW  
24'x8' 15,000# GVW

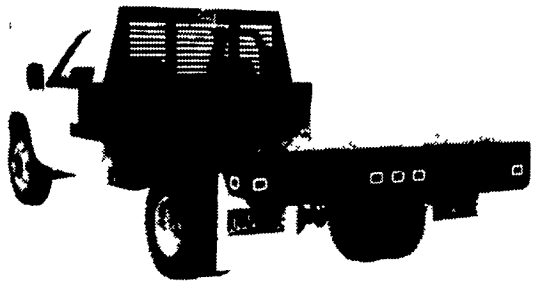


**Low Profile Construction**  
16'x77" & 18'x77"-10,000# GVW  
**DECK-OVER CONSTRUCTION**  
20'x8' w/Tail 10,000# GVW **\$3,395**  
20'x8' w/Tail 12,000# GVW **\$3,795**  
www.kutzfarm.com  
8 AM-5 PM Monday Thru Friday  
8 AM-12 Saturday Or By Appointment

**KUTZ FARM EQUIPMENT, INC.**

71 Kutz Road, Pine Grove, PA 570-345-4882 Fax 570-345-2884

**HOSTETLER**  
**Truck Bodies & Trailers**  
**717-667-3921**  
Milroy Exit off Rt. 322  
Between Lewistown & State College

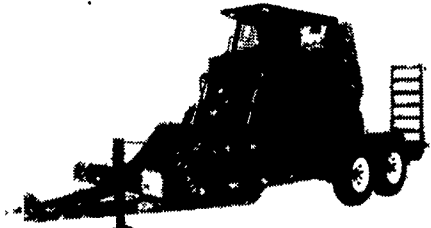


**Steel Truck Flatbeds**

**Cadet 8'x84"** Pick Up Replacement Platform, Bulkhead, Rear Skirt with Lights, With & Without Gooseneck  
**Cadet 9'x90"** & 95" Platforms, Bulkhead, Rear Skirt with Lights, With & Without Gooseneck  
**Knapheide 9'x94"** Platform, Bulkhead, Gooseneck

**Aluminum Truck Flatbeds**

**Cadet 8'x94"** Aluminum Pickup Replacement Platform, Bulkhead, Rear Skirt with Lights, Gooseneck  
**Eby 9'x94"** Aluminum Platforms, Bulkhead, Gooseneck, Heavy Duty Construction



**Landscape Trailers**

**Single Axle Utility Tilt or Ramp Gate**, Starting at \$595.  
**Tandem Axle Utility Ramp Gate**, 7000# GVW, Starting at \$1750.  
**US Cargo 16'** Tandem Axle, Ramp on Side & Rear, 7000# GVW, Was \$2595. Clearance Price \$2295.  
**US Cargo 20'** Tandem Axle, Ramp on Side & Rear, 10,000# GVW, Was \$2995. Clearance Priced \$2595.

**Loader & Equipment Trailers**

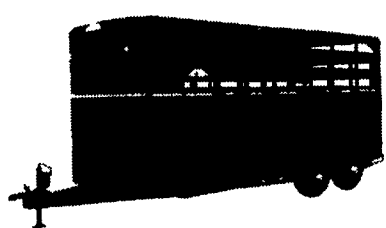
**Moritz 16'** Loader Trailer, Torsion Axles, Ramps 9950#  
**Moritz 18'+4'** Equipment Trailer, deckover, Dovetail & Ramps  
**Corn Pro 20'+5'** Flatbed, Dovetail, 3 Ramps, 14,000#

**Hydraulic Dump Trailers**

**E Z Dumper 6'x10'** 10,000# GVW, Dump Thru Gate  
**Moritz 6'x10'** Low Pro Dump, Double Doors, Ramps 10,000#  
**Hostetler 8'x12'** Aluminum Deckover Dump, 20" Sides 26" Front & Gate, Scissor Hoist, 10 or 12000# GVW

**Used Equipment Trailers**

**12' Loader Trailer**, 10,000# GVW, New Inspection \$1995  
**12' Utility**, Aluminum Sides & Floor, Ramps, 7000# GVW, \$1995  
**Cronkite 16'+4'** Deckover, 12,000# GVW, Ramps \$1995  
**16' Deckover**, Ramps, 10,000# GVW, Heavy Jack \$1695



**Steel & Aluminum Livestock Trailers**

**Moritz 6'x16'** Bumper Pull Livestock, 7000# GVW  
**Eby 6'x16'** Maverick LS Bumper Pull, 10,000# GVW  
**Eby 6'x16'** Maverick LS Gooseneck, 10,000# GVW  
**(2) Eby 6'8"x20'** Maverick Gooseneck, 14,000# GVW

**Steel & Aluminum Horse Combo Trailers**

**Moritz 2 Horse Slant Load Bumper**, DR, 7' High  
**Corn Pro 2 Horse Slant Load Bumper**, DR, 7' High  
**Eby 6'x16'** Maverick LS, 7' High, 10,000# GVW  
**Moritz 6'8"x16'** Gooseneck, 7' High, 12,000# GVW  
**Eby Maverick, 6'8"x20'** Goose, 7' High, 14,000# GVW

**Misc New & Used Truck Equipment**

New 9' Aluminum Dump Body, 20" High Sides, 26" Tailgate, 1/4 Cab Protector  
New 16' Aluminum Grain Body, 48" High Sides, Double Acting Tailgate with Grain Chute  
New 9' & 12' Stake Bodies, With & Without Sides  
Used 12' Eby Cattle Body, Off One Ton Truck, \$1500  
Used 12' Aluminum Van Body, Double Rear Doors, Very Good Condition  
Used 10' & 12' Stake Bodies